

# WETA



JULY 2025  
MAGAZINE FOR MEMBERS

## A Capitol Fourth

Annual Broadcast Celebrates Independence Day  
on WETA PBS & WETA Metro



# WETA Focus



**A**s we mark the nation's birthday in July, I hope you are able to tune in for *A Capitol Fourth*, the annual broadcast of the stirring national Independence Day celebration that WETA brings to the American public each year via PBS in partnership with our friends at Capital Concerts. The program airs live from the West Lawn of the U.S. Capitol. Like the *National Memorial Day Concert* that we present each May, the popular July 4 production resonates with viewers throughout the country. *A Capitol Fourth* offers a front row seat for the lively concert and the dazzling traditional fireworks display that follows on the National Mall.

We are honored to embrace the responsibility for sharing such events from our community with a nationwide audience, *free and accessible to all* — as with all of our broadcasts. Service to the public is fundamental to all that we do: from our

presentations of vital curriculum- and skills-based PBS educational programming for children to our productions illuminating the rich history and culture of our local community; from our beloved classical music radio service to our marquee public affairs productions; and, as well, to our engaging history films that share stories of our nation and its people.

This fall, as the nation prepares to observe the 250th anniversary of our country's founding, WETA will be debuting our next collaboration with Florentine Films on PBS stations nationwide. The epic six-part, 12-hour history documentary *The American Revolution*, from WETA and filmmakers Ken Burns, Sarah Botstein and David Schmidt, premieres November 16.

In this project and surrounding our many other programs and educational content, WETA is dedicated to using the power of media to serve the public. In recent weeks, Congress has been vigorously debating federal funding for public media. I encourage you to visit [weta.org/yourweta](http://weta.org/yourweta) to learn more about the work that WETA does locally and nationally, and how federal funding sustains both WETA and our nation's public media system.

Trusted, valued and essential, WETA is a cultural pillar of Greater Washington and deeply committed to our community. As we have since our founding more than 65 years ago, we will continue to follow our lodestar — our mission of service.

Thank you for your ongoing support.



New major history series premieres this fall

*Sharon Percy Rockefeller*

Sharon Percy Rockefeller  
President and Chief Executive Officer, WETA

## WETA – ON THE AIR & ONLINE

### WETA PBS

26.1 via antenna  
Comcast 26, 219, 800, 1026  
Cox 26, 1003, 1026  
DirecTV 26, 26-1, Stream  
Dish 8076 Fios 26, 526  
RCN 26, 613  
[YouTube.com/wetapbs](http://YouTube.com/wetapbs)

### WETA UK

26.2 via antenna  
Comcast 265, 1146  
Cox 800  
Fios 474  
RCN 39, 602

### WETA Metro

26.5 via antenna  
[weta.org/livestream](http://weta.org/livestream)  
PBS app Cox 802  
YouTube TV  
Hulu + Live TV  
Comcast 270, 1148  
Fios 470 RCN 599

### WETA World

26.4 via antenna  
Fios 475  
RCN 37  
Stream at [weta.org](http://weta.org)

COVER: A CAPITOL FOURTH,  
VAL PROUDKII

# A Capitol Fourth

**WETA co-production airs  
Friday, July 4 at 8 p.m.  
on WETA PBS & WETA Metro;  
tune in or stream**

**A** *Capitol Fourth* — the annual Independence Day celebration brought to the nation via PBS by Capital Concerts and WETA — airs July 4 live from the West Lawn of the U.S. Capitol, marking the nation's 249th birthday. The all-star event, honoring America's freedoms and independence, and those who defend them, features patriotic and musical performances across genres, including pop, country, R&B, classical and Broadway, with the National Symphony Orchestra under the direction of premier pops conductor Jack Everly.

The 45th anniversary broadcast of the national Independence Day celebration will per longstanding tradition be capped by the nation's greatest display of fireworks, lighting up the capital's skyline for the country's biggest birthday party.

*A Capitol Fourth* airs Friday, July 4 at 8 p.m. on WETA PBS and WETA Metro, repeating at 9:30 p.m. on both channels and Sunday, July 6 at noon and Monday, July 7 at 3 p.m. on WETA PBS.

*A Capitol Fourth* is made possible by grants from The Boeing Company, the National Park Service, the Department of the Army, the Corporation for Public Broadcasting, PBS and public television stations nationwide. Air travel is provided by American Airlines.



COURTESY CAPITAL CONCERTS

## The Statue of Liberty

**on *Iconic America: Our Symbols and Stories with David Rubenstein***



MICHAEL HEISE/UNSPASH

**WETA co-production airs Tuesday, July 1  
at 9 p.m. on WETA PBS & WETA Metro**

**M**arking the week of America's birthday celebration, WETA features an encore presentation of *The Statue of Liberty* — an episode of the acclaimed American history series *Iconic America: Our Symbols and Stories with David Rubenstein*, a WETA co-production that illuminates the stories behind the nation's icons, symbols and places. The program traces the arc of the Statue's resonance, exploring its significance and the evolving meaning that it has for Americans, and how it embodies our values and our conflicts.

Guiding the exploration is David Rubenstein — patriotic philanthropist, lifelong student of history, author, and the series' host and executive producer. A proponent of civics and history education in the United States, Rubenstein travels the nation in the series to engage with

historical thinkers, community members, and subject-matter experts, using the spotlighted icons as a gateway to understanding America's past and present. The 8-episode series is available for streaming with WETA Passport. Visit [pbs.org/iconicamerica](https://pbs.org/iconicamerica) to learn more.

Funding for *Iconic America: Our Symbols and Stories with David Rubenstein* is provided by The Zohar and Lisa Ben-Dov Family through the Luminescence Foundation.

**For program and membership inquiries, visit [weta.org](https://weta.org) or call 703-998-2724.**

### WETA PBS Kids

26.3 via antenna  
Comcast 266, 1147  
Cox 801  
Fios 472  
RCN 38

### WETA Online

[weta.org](https://weta.org)  
[weta.org/passport](https://weta.org/passport)  
[weta.org/pbsapp](https://weta.org/pbsapp)  
[weta.org/learningmedia](https://weta.org/learningmedia)

### WETA Classical

WETA 90.9 FM Washington, D.C.  
WGMS 89.1 FM Hagerstown  
[wetaclassical.org](https://wetaclassical.org)  
[vivalavoce.org](https://vivalavoce.org)  
WETA Classical App





## POV: Maya Lin: A Strong Clear Vision

**Tuesday, July 22 at 10 p.m.  
on WETA PBS & WETA Metro;  
tune in or stream**

Independent film series *POV* offers an encore presentation of the production *Maya Lin: A Strong Clear Vision*, winner of the 1994 Academy Award for Best Documentary Feature. Directed by Freida

Lee Mock and co-presented with the Center for Asian American Media (CAAM), the acclaimed film captures the remarkable story of Maya Lin, a young undergraduate architecture student at Yale who gained national recognition in 1981 after winning a competition to design the Vietnam Veterans Memorial in Washington, D.C. Her minimalist yet moving design sparked intense controversy, as the war had ended just eight years earlier and remained a divisive subject. Amid public debate and personal attacks, Lin held her ground with unwavering resolve and grace. Her work continues to shape the landscape of modern architecture, making Lin one of the most influential artist-architects of our time.

### More independent films, Monday nights on WETA PBS; tune in or stream:



**POV: Igualada**

women find themselves at the heart of a changing nation. A Chinese director pushes for 30,000 new jobs, while a local farmer and factory worker face the promise and painful realities of rapid industrialization. Their interwoven stories reveal the complex human dimensions of global development.

**POV: Igualada: Refusing to Know Your Place** (July 7, 10 p.m.) • This film, which made its world premiere at the 2024 Sundance Film Festival, documents Black activist Francía Márquez's rise from rural organizer to presidential candidate in Colombia, challenging centuries of racial and social exclusion. Documenting 15 years, this portrait captures how Márquez transformed a grassroots political movement into a powerful force for change.

**POV: Made in Ethiopia** (July 14, 10 p.m.) • As a massive Chinese-run factory complex attempts a high-stakes expansion in rural Ethiopia, three



**POV: The Ride Ahead**

**POV: The Ride Ahead** (July 21, 10 p.m.) • Marking Disability Awareness Month, this film follows 21-year-old Samuel Habib, a disabled young man determined to move out, go to college, start a career, and find love, while seeking guidance from a community of disability activists. Yet every rite of passage is fraught with challenges. "No one tells you how to be an adult," Samuel says, "let alone an adult with a disability."

**Voces: Slumlord Millionaire** (July 28, 10 p.m.) • Rents have gone up an average of 30% in the past five years in the United States. As of April 2024, the average rent in Manhattan was almost \$5,000

per month. This portrait spotlights those deeply impacted by New York City's rapid gentrification and skyrocketing rent costs. Meet the determined individuals and dedicated attorneys fighting for the human right to a home.



# The Madame Blanc Mysteries, Series 1

**9 p.m. Thursdays starting  
July 17 on WETA PBS;  
plus Series 2 sneak peek July 3 & 10**

**W**ETA presents the drama *The Madame Blanc Mysteries* (Series 1) starting Thursday, July 17 on WETA PBS; the series has previously aired on WETA UK. In the storyline, Jean White (portrayed by series creator and co-writer Sally Lindsay) is a Cheshire antiques dealer who finds herself a widow and nearly bankrupt following her husband's sudden death. Heading to their only remaining asset, a cottage in a village in the south of France, she seeks answers about her husband's life and demise. Earlier this month, on Thursdays, July 3 and 10 at 9 p.m. on WETA PBS, WETA offers a special two-episode sneak peek of the drama's second season. Series 2 follows Jean in her new life in France, where she begins setting up shop and continues to be drawn into mysteries. Series 2 will air in full starting in September, but it can be streamed as of July 1 with WETA Passport (along with Series 1, already available for streaming).



COURTESY AMERICAN PUBLIC TELEVISION/ACORN TV

## Turn: Washington's Spies

**8 p.m. Saturdays starting July 12  
on WETA PBS; 7 p.m. Sundays  
starting July 13 on WETA Metro**

**A** 10-part Revolutionary War drama goes behind the battlefield to a shadow war fought by patriots who vowed to keep their heroics a secret. Based on Alexander Rose's book "Washington's Spies: The Story of America's First Spy Ring," the series centers on Abe Woodhull (Jamie Bell, *Billy Elliot*), a farmer living in British-occupied Long Island. He bands together with a disparate group of childhood friends to form the Culper Ring (the true-life spy network that scored successes such as the exposure of turncoat Benedict Arnold). Together, they risk their lives and honor for a fight they believe in passionately. Their work helps George Washington (Ian Kahn, *The Good Wife*) turn the tide of the Revolutionary War, and their daring efforts revolutionize the art of espionage. Binge-watch the series with WETA Passport.



COURTESY AMERICAN PUBLIC TELEVISION/AMC

## Unforgotten, Series 5 on Masterpiece

**encores 10 p.m. Thursdays  
starting July 3 on WETA PBS**

**I**n anticipation of a new season — premiering in August — of BAFTA-winning contemporary *Masterpiece* detective series *Unforgotten*, WETA reprises the drama's previous season, Series 5. The drama stars Sanjeev Bhaskar as London policeman DI Sunil "Sunny" Khan and Sinéad Keenan as his new boss DCI Jessica "Jess" James, joining the team after the tragic events concluding Series 4. Together, the two investigate cold cases; James' first investigation looks to be a murder dating back to the 1930s, but there are baffling questions that need answering. As Series 5 opens, Jess's first day in her new job is marred by a devastating event in her family life. Ian McElhinney (*Derry Girls*) and Hayley Mills co-star. Binge-watch *Unforgotten* on *Masterpiece* with WETA Passport.



AMERICAN PUBLIC TELEVISION/ACORN TV





Charles Dance as Michelangelo

## Renaissance: The Blood and the Beauty

9 p.m. Tuesdays starting July 8  
on WETA PBS & WETA Metro;  
tune in or stream

A new three-part BBC docudrama from the producer of *Julius Caesar: The Making of a Dictator* explores how Western civilization's most beautiful works of art emerged from one

of the most brutal periods in history. The series features actor Charles Dance (*The Jewel in the Crown*; *Game of Thrones*) as the great artist Michelangelo; Sophie Okonedo narrates. The Renaissance was a time of power politics, upheaval, betrayal and bloodshed, yet it was also a time of unparalleled creativity. This miniseries takes Michelangelo as its guide and reveals how he navigated the violent reality of the times — and how his life intersected with two other geniuses of the era, Leonardo da Vinci and Raphael. *Renaissance: The Blood and the Beauty* blends expert interviews, dramatic reconstructions and immersion in wondrous works of art.



Drawing of an arm, by Leonardo da Vinci

## Secrets of the Dead: Leonardo, The Man Who Saved Science

Tuesday, July 8 at 10 p.m.  
on WETA PBS & WETA Metro;  
tune in or stream

An episode of history series *Secrets of the Dead* spotlights the original Renaissance Man and his contributions to science. Leonardo da Vinci (1452-1519)

is best known as one of the world's great artists, famous for masterpieces such as *Mona Lisa* and *The Last Supper*. This program focuses on Leonardo's advancement of the scientific method — and how he sparked a renewed interest in scientific experimentation lost in Europe during the Dark Ages. His notebooks contain plans for hundreds of inventions that would be created centuries later, including diving suits, construction cranes, robots, flying machines and more. Where did he get his ideas? The program examines his inventions and traces their origins.



## The Real Crown: Inside the House of Windsor

7 p.m. Sundays starting July 20 on WETA PBS

For 70 years, Queen Elizabeth II (left) saw herself as the protector of the Crown, through every era and every scandal. The five-part series *The Real Crown: Inside the House of Windsor* presents the story of her family — and its life under intense public scrutiny. Like most families, Britain's Royal Family has had to deal with crises — feuds, heartbreak, sibling rivalries, affairs, divorces and deaths. But they also have had to face assassination attempts, kidnappings, tabloid scandals and terrorist bombs. Spanning six decades of British history, *The Real*

*Crown* captures the powerful real-life human drama of the greatest remaining dynasty in Europe. Episodes are *Love and Duty*; *Threats*; *Intruders*; *Tomorrow's People*; and *Heirs and Spares*.



# The Great American Recipe

**9 p.m. Fridays starting July 11  
on WETA PBS & WETA Metro;  
tune in or stream Series 4**

**T**he PBS cooking competition *The Great American Recipe* returns to Nashville for a fourth season featuring talented home cooks from around the country showcasing signature recipes that reflect their unique backgrounds and culinary stories. The six programs present themed cook-offs with judges determining who has the winning dish. The season culminates with one home cook being crowned the winner of The Great American Recipe. This season, chefs and restaurateurs Tiffany Derry and Timothy Hollingsworth, along with *Splendid Table* host Francis Lam, return as judges to guide and encourage participants along the way, while Alejandra Ramos returns as series host. *Today* host Al Roker joins the July 11 season opener as a special guest judge. Filmed at Green Door Gourmet, a 350-acre farm in Tennessee, the upbeat cooking competition spotlights the incredible variety of tastes and traditions of the American culinary landscape. Watch previous seasons with WETA Passport.



## American Masters: Marcella

**Friday, July 11 at 10 p.m.  
on WETA PBS & WETA Metro;  
tune in or stream**

**B**iography series *American Masters* spotlights celebrated cooking writer Marcella Hazan (1924-2013) and how she shaped Italian food in America, changing how we cook and experience the cuisine. After immigrating to New York in the 1950s, speaking no English, having trained as a scientist and never cooked, and challenged by a disabled right arm, Hazan began making authentic dishes from her Italian roots. She inspired millions of Americans with her teaching, her cookbooks, and an uncompromising commitment to tradition. The 90-minute film quotes Julia Child having called Hazan “my mentor in all things Italian.” The documentary tells Hazan’s story, featuring interviews with Jacques Pépin, Danny Meyer, Lidia Bastianich, and family members — Hazan’s widower and writing partner Victor Hazan, and their son Giuliano.



## To Dine for With Kate Sullivan

**9:30 a.m. Sundays on WETA PBS;  
tune in or stream at [weta.org](http://weta.org)**

**W**ETA presents the engaging series *To Dine for With Kate Sullivan* each Sunday morning at 9:30 a.m. on WETA PBS, featuring stories — over a meal — of visionaries and innovators who have achieved success through skill and ingenuity.

In the programs, Emmy Award-winning journalist Kate Sullivan accompanies her spotlighted guest to their favorite restaurant, where they dine and converse about life, success and what it takes to pursue and achieve the American Dream. Currently in Season 7, the series also reprises a Season 6 episode on Saturday, July 5 at 6:30 p.m., repeating July 6, 11:30 a.m., featuring renowned filmmaker and WETA partner Ken Burns, who shares his creative process.





# Stream with WETA Passport



Stream your favorite shows with WETA Passport, a member benefit that offers access to a vast library of superb programs available for streaming on demand. To learn how to access programming with WETA Passport, visit [weta.org/passporthelp](https://weta.org/passporthelp).



© MAINSTREET PRODUCTIONS



## **Unforgotten on Masterpiece**

With a new season of the popular British detective drama premiering in August, catch up with earlier seasons, which star Sanjeev Bhaskar, Nicola Walker and Sinéad Keenan. Binge-watch 30 episodes (five seasons), available now for streaming with WETA Passport.



COURTESY PBS/© 2023 ZDF

## **The Shadow (German, English-subtitled)**

In this drama, after moving to Vienna, journalist Norah Richter is confronted by a woman who predicts Norah will soon kill a man. As Norah tries to dismiss the prophecy, events unravel her reality. Binge-watch 6 episodes with WETA Passport as of July 4.



© 2023 DRIVE STUDIOS



## **Suplex (Danish, English-subtitled)**

In an idyllic Danish town, the murder of a young wrestler shatters the community. Coach Lars becomes the prime suspect, while his wife is entangled with the chief of police. As the story unfolds, buried secrets surface. Binge-watch 4 episodes with WETA Passport as of July 4.



© 2020 DR

## **When the Dust Settles (English-subtitled)**

In this gripping Danish/Swedish drama, the paths of eight people converge at a cataclysmic terror attack. Survivors struggle to make sense of tragedy; how will their lives change and can they move on? Binge-watch 10 episodes with WETA Passport as of July 25.



© 2023 VIO MEDIA



## **Detective Surprenant (in French, English-subtitled)**

When the mayor's daughter is found murdered in a town on a remote Canadian island, Detective André Surprenant returns home to investigate. It's a place where everyone knows everyone and secrets run deep. Binge-watch 6 episodes with WETA Passport as of July 11.



© 2020 UKBAR FILMS FICCIÓN PRODUCCIONES

## **The Spy (Portuguese, English-subtitled)**

In neutral World War II Lisbon, a daring double agent navigates love, betrayal, and covert missions. Between British intelligence, Nazi operatives, and Portugal's secret police, Maria Joao walks a tightrope. Binge-watch 8 episodes with WETA Passport as of July 18.

# Primetime

WETA PBS in July



Visit [weta.org/schedule](http://weta.org/schedule) for the most up-to-date schedule information.

  Denotes WETA productions, co-productions and presentations

	8:00		8:30		9:00		9:30		10:00		10:30	
1 Tue	Finding Your Roots w/ Henry Louis Gates, Jr., Series 10 encore: <i>Fathers and Sons</i>				Iconic America: Our Symbols and Stories with David Rubenstein ( <i>The Statue of Liberty</i> )				Frontline			
2 Wed	Walking with Dinosaurs (Pt 2 of 6. <i>The River Dragon</i> )				Human Footprint, Series 2 (Pt 2 of 6. <i>The Enemy of My Enemy</i> )				NOVA: Iceman Reborn			
3 Thur	Whitstable Pearl (Pt 2 of 6. <i>Random Acts</i> )				The Madame Blanc Mysteries, Series 2 ( <i>Season 2 sneak peek</i> : Ep 1)				<i>Unforgotten</i> , Series 5 on Masterpiece (Pt 1 of 6)			
4 Fri	A Capitol Fourth 2025						A Capitol Fourth 2025 (encore)					
5 Sat	Beyoncé & Solange: The Queen of Pop and Her Soul Sister				WETA Rocks!: Elton John: The Million-Dollar Piano						Beyond the Canvas	
6 Sun	Patience (Pt 4 of 6. <i>The Locked Room</i> )				Grantchester, Series 10 on Masterpiece (Pt 4 of 8)				Atlantic Crossing on Masterpiece (Pt 4 of 8. <i>Fires Spread</i> )			
7 Mon	Antiques Roadshow: New York City, Hour 3				Get Out of Town: Pittsburgh, PA		Signature Dish: Crossover Cuisine		POV: Igualada: Refusing to Know Your Place (to 11:30pm)			
8 Tue	Finding Your Roots w/ Henry Louis Gates, Jr., Series 10 encore: <i>Buried Secrets</i>				Renaissance: The Blood and the Beauty (Pt 1 of 3. <i>Rise</i> )				Secrets of the Dead: Leonardo, The Man Who Saved Science			
9 Wed	Walking with Dinosaurs (Pt 3 of 6. <i>Band of Brothers</i> )				Human Footprint, Series 2 (Pt 3 of 6. <i>Dressed to Kill</i> )				NOVA: Dino Birds			
10 Thur	Whitstable Pearl (Pt 3 of 6. <i>Civil War</i> )				The Madame Blanc Mysteries, Series 2 ( <i>Season 2 sneak peek</i> : Ep 2)				<i>Unforgotten</i> , Series 5 on Masterpiece (Pt 2 of 6)			
11 Fri	Washington Week with <i>The Atlantic</i>		Live from LBJ Library w/ Mark Updegrove, Series 2		The Great American Recipe, Series 4 (Pt 1 of 6. <i>First Impressions</i> )				American Masters: Marcella (to 11:30pm)			
12 Sat	Turn: Washington's Spies (Pt 1 of 10)				Renaissance: The Blood and the Beauty (Pt 1 of 3. <i>Rise</i> )				WETA Rocks!: The Commodores Live (to 11:30pm)			
13 Sun	Patience (Pt 5 of 6. <i>My Brother's Keeper</i> )				Grantchester, Series 10 on Masterpiece (Pt 5 of 8)				Atlantic Crossing on Masterpiece (Pt 5 of 8. <i>Empty Promises</i> )			
14 Mon	Antiques Roadshow: Fort Worth, Hour 2				If You Lived Here: H Street Corridor		Signature Dish: Just Desserts		POV: Made in Ethiopia (to 11:30pm)			
15 Tue	Finding Your Roots w/ Henry Louis Gates, Jr., Series 10 encore: <i>Hold the Laughter</i>				Renaissance: The Blood and the Beauty (Pt 2 of 3. <i>Rivalry</i> )				Frontline			
16 Wed	Walking with Dinosaurs (Pt 4 of 6. <i>The Pack</i> )				Human Footprint, Series 2 (Pt 4 of 6. <i>The Honey Trap</i> )				NOVA: When Whales Could Walk			
17 Thur	Whitstable Pearl (Pt 4 of 6. <i>Disappearance at Oare</i> )				The Madame Blanc Mysteries, Series 1 (Pt 1 of 6)				<i>Unforgotten</i> , Series 5 on Masterpiece (Pt 3 of 6)			
18 Fri	Washington Week with <i>The Atlantic</i>		Live from LBJ Library w/ Mark Updegrove, Series 2		The Great American Recipe, Series 4 (Pt 2 of 6. <i>Passing the Dish</i> )				Pati Jinich Explores Americana (Pt 1 of 3. <i>Alaska – Wild Harvest</i> )			
19 Sat	Turn: Washington's Spies (Pt 2 of 10. <i>Who By Fire</i> )				Renaissance: The Blood and the Beauty (Pt 2 of 3. <i>Rivalry</i> )				WETA Rocks!: Third Eye Blind – Live at Red Rocks (to 11:30pm)			
20 Sun	Patience (Pt 6 of 6. <i>Pandora's Box</i> )				Grantchester, Series 10 on Masterpiece (Pt 6 of 8)				Atlantic Crossing on Masterpiece (Pt 6 of 8. <i>The Giant Awakes</i> )			
21 Mon	Antiques Roadshow: Indianapolis, Hour 1				If You Lived Here: Shaw, DC		Signature Dish: Best of Breakfast		POV: The Ride Ahead (to 11:30pm)			
22 Tue	Finding Your Roots w/ Henry Louis Gates, Jr., Series 10 encore: <i>Far and Away</i>				Renaissance: The Blood and the Beauty (Pt 3 of 3. <i>Redemption</i> )				POV: Maya Lin: A Strong Clear Vision (to 11:30pm)			
23 Wed	Walking with Dinosaurs (Pt 5 of 6. <i>The Journey North</i> )				Human Footprint, Series 2 (Pt 5 of 6. <i>Dammed If You Do</i> )				NOVA: Rise of the Mammals			
24 Thur	Whitstable Pearl (Pt 5 of 6. <i>A Cup O' Kindness</i> )				The Madame Blanc Mysteries, Series 1 (Pt 2 of 6)				<i>Unforgotten</i> , Series 5 on Masterpiece (Pt 4 of 6)			
25 Fri	Washington Week with <i>The Atlantic</i>		Live from LBJ Library w/ Mark Updegrove, Series 2		The Great American Recipe, Series 4 (Pt 3 of 6. <i>The Bakes Are High</i> )				Pati Jinich Explores Americana (Pt 2 of 3. <i>Juneau and Whitehorse: Sister Cities</i> )			
26 Sat	Turn: Washington's Spies (Pt 3 of 10. <i>Of Cabbages and Kings</i> )				Renaissance: The Blood and the Beauty (Pt 3 of 3. <i>Redemption</i> )				WETA Rocks!: Tommy Emmanuel: Live at the Sydney Opera House (to 11:30pm)			
27 Sun	Lucy Worsley Investigates, Series 2: Jack the Ripper				Grantchester, Series 10 on Masterpiece (Pt 7 of 8)				Atlantic Crossing on Masterpiece (Pt 7 of 8. <i>The Gift</i> )			
28 Mon	Antiques Roadshow: Indianapolis, Hour 3				If You Lived Here: Old Town Alexandria		Signature Dish: French Delights		Voces: Slumlord Millionaire (to 11:30pm)			
29 Tue	Finding Your Roots w/ Henry Louis Gates, Jr., Series 10 encore: <i>Mean Streets</i>				American Experience: Ruthless: Monopoly's Secret History				Frontline			
30 Wed	Walking with Dinosaurs (Pt 6 of 6. <i>Island of Giants</i> )				Human Footprint, Series 2 (Pt 6 of 6. <i>Vanishing Act</i> )				NOVA: Ancient Maya Metropolis			
31 Thur	Whitstable Pearl (Pt 6 of 6. <i>The Man on the Blue Plaque</i> )				The Madame Blanc Mysteries, Series 1 (Pt 3 of 6)				<i>Unforgotten</i> , Series 5 on Masterpiece (Pt 5 of 6)			
	8:00		8:30		9:00		9:30		10:00		10:30	

**PBS News Hour** airs weeknights at 7 p.m.  
**PBS News Weekend** airs Sat./Sun. at 6 p.m.

**Amanpour and Company** airs late weeknights (check listings)



# TV Listings

WETA PBS in July



Listings are accurate as of press time. For latest schedules, visit [weta.org/schedule](http://weta.org/schedule) or call 703-998-2724.

WETA PBS is devoted to children's educational programming 8 a.m.-3 p.m., Monday-Friday. For 24 hours of children's programming each day, tune in to the WETA PBS Kids channel. See page 15 for information.

## Program Key

**Blue type** – WETA productions, co-productions and presentations.

**R** – Repeat of recent programming.



## A CAPITOL FOURTH 2025 A WETA CO-PRODUCTION

Friday, July 4 at 8 p.m. on WETA PBS & WETA Metro

*A Capitol Fourth* presents the annual Independence Day concert and celebration live from the West Lawn of the U.S. Capitol – and the dazzling fireworks display on the National Mall.

## 1 Tuesday

### WEEKDAYS IN JULY:

6AM NHK NEWSLINE

6:30AM BBC NEWS

7AM (Mondays:) PBS NEWS WEEKEND

7AM (Tuesdays-Saturdays:) PBS NEWS HOUR – R

7:30 (Mon:) WASHINGTON WEEK WITH THE ATLANTIC – R

8AM-3PM WETA KIDS PROGRAMMING

5PM AMANPOUR AND COMPANY – Rpt of previous night

6PM BBC NEWS: THE CONTEXT

6:30 BBC NEWS AMERICA

7PM PBS NEWS HOUR – Each weeknight, the WETA production presents in-depth news reports and analysis of current events with a news summary, live studio interviews and discussions of domestic and international issues. Amna Nawaz and Geoff Bennett anchor. Visit [pbs.org/newshour](http://pbs.org/newshour). **Repeats next day, 7am**

**8:00 FINDING YOUR ROOTS WITH HENRY LOUIS GATES, JR.** – In this series, join the Harvard scholar as he explores the genealogy of famous Americans. *Season 10 encore: Fathers and Sons*. Gates meets actors LeVar Burton and Wes Studi – two men who grew up without their fathers. Gates introduces them to ancestors they've never known – revealing connections to key moments in history. **Repeats Wed 7/2, 3pm; Sat 7/5, 11pm; Sun 7/6, 4pm**

**9:00 ICONIC AMERICA: OUR SYMBOLS AND STORIES WITH DAVID RUBENSTEIN** – In this WETA co-production, an acclaimed series that streams with WETA Passport and airs on the WETA World channel this month, David Rubenstein explores America's history through examinations of iconic artifacts, places and archetypes. *The Statue of Liberty*. Learn about the evolving meaning of this symbol and how it embodies our values and conflicts. **Repeats Wed 7/2, 4pm; Sat 7/5, midnight; Sun 7/6, 3pm, 11pm**

**10:00 FRONTLINE** – To be announced.

**11:00 AMANPOUR AND COMPANY** – Examine the global issues, domestic news and trends impacting the world. Christiane Amanpour leads conversations with thought leaders and influencers, with other interviews from Walter Isaacson, Michel Martin and Hari Sreenivasan. **Repeats next weekday, 5pm**

## 2 Wednesday

**8:00 WALKING WITH DINOSAURS** – Step into the world of iconic dinosaurs. *Part 2 of 6. The River Dragon*. A Spinosaurus – the world's largest-ever predatory dinosaur – struggles to bring up his babies and lead his young family across one of the deadliest environments in Earth's history. **Repeats Thur 7/3, 3pm**

**9:00 HUMAN FOOTPRINT, SERIES 2** – Biologist Shane Campbell-Staton travels the globe to explore how humans are transforming the planet. *Part 2 of 6. The Enemy of My Enemy*. In humankind's conquest of planet Earth, we rely on improbable allies – species we've recruited from nature – to help us defeat our adversaries. But is the enemy of an enemy always a friend? **Repeats Thur 7/3, 4pm**

**10:00 NOVA: ICEMAN REBORN** – Murdered more than 5,000 years ago, Otzi the Iceman is Europe's oldest known natural mummy. Now, new revelations about Otzi's life and legacy come to light, including surprising secrets hidden in his genetic code.

## 3 Thursday

**8:00 WHITSTABLE PEARL** – A British drama follows single mother and restaurateur Pearl (Kerry Godliman) as she pursues her dream of running a private detective agency. *Part 2 of 6. Random Acts*. Mike investigates the death of a diabetic estate agent. When a woman hires Pearl to look into a large sum of cash left in her mailbox, Pearl discovers that Whitstable may have a mysterious benefactor. Are the two cases linked?

**9:00 THE MADAME BLANC MYSTERIES, SERIES 2** – *Special two-episode Season 2 sneak peek!* Antiques dealer Jean White (Sally Lindsay, *Coronation Street*) has embraced her new life and new friends in France. She continues to be drawn into mysteries, from minor offenses to murder investigations, with admirer Dom by her side. Meanwhile, her late husband's killer remains



### Saturday nights on WETA PBS

The summer concert series *WETA Rocks!* this month features Elton John (July 5); The Commodores (above, July 12); the band Third Eye Blind (July 19); and Tommy Emmanuel (July 26).



## FINDING YOUR ROOTS WITH HENRY LOUIS GATES, JR. IN ASSOCIATION WITH WETA

8 p.m. Tuesdays on WETA PBS & WETA Metro

Genealogy series *Finding Your Roots with Henry Louis Gates, Jr.* presents encore Season 10 programs throughout July. Above: Series guest Wes Studi with Prof. Gates on the July 1 episode.

at large. *Episode 1.* It's Christmas in Sainte Victoire, lights are twinkling, and choirs are singing. Jean is looking forward to spending it with her new friends.

**Repeats Fri 7/4, 3pm**

**10:00 UNFORGOTTEN, SERIES 5 ON MASTERPIECE**—With new Series 6 episodes premiering in August, WETA reprises Series 5. DCI Jess James (Sinéad Keenan) joins the police team and partners with DI Sunny Khan (Sanjeev Bhaskar). The ghost of Cassie Stuart looms over the squad. *Part 1 of 6.* DCI James' first day in her new job is marred by a devastating event in her family life. Then, a case looks like a murder dating to the 1930s, but could the body have been disposed of more recently?

**Repeats Fri 7/4, 4pm**

## 4 Friday

**8:00 A CAPITOL FOURTH 2025**—In this annual co-production of Capital Concerts and WETA, mark America's 249th birthday with the 45th anniversary broadcast of the nation's Independence Day celebration featuring concert performances by top acts live from the West Lawn of the U.S. Capitol—and the annual fireworks display over the National Mall. See page 1. **Repeats tonight; Sun 7/6, noon; Mon 7/7, 3pm**

**9:30 A CAPITOL FOURTH 2025**—(encore)

## 5 Saturday

**6AM TO DINE FOR WITH KATE SULLIVAN**—(7/5: Ken Burns)

**6AM WASHINGTON WEEK WITH THE ATLANTIC** (as of July 12)

**6:30 HISTORY WITH DAVID RUBENSTEIN, SEASON 6**—*Ned Blackhawk* (July 5).

**6:30 FIRING LINE WITH MARGARET HOOVER** (as of July 12)

**7AM PBS NEWS HOUR**—R

**8AM BLOOMBERG WALL STREET WEEK** (*Ant. Roadshow* 7/5)

**9AM THIS OLD HOUSE + ASK THIS OLD HOUSE**

**10AM STEVEN RAICHLEN'S PLANET BARBECUE**

**10:30 LIFE OF LOI**

**11AM AMERICA'S TEST KITCHEN FROM COOK'S ILLUSTRATED**

**11:30 KEVIN BELTON'S COOKIN' LOUISIANA**

**12N THE DOOKY CHASE KITCHEN: LEAH'S LEGACY**

**12:30 CHRISTOPHER KIMBALL'S MILK STREET TELEVISION**

**1:00 WEEKENDS WITH YANKEE**

**1:30 LIDIA'S KITCHEN**

**2:00 LUCKY CHOW**

**2:30 HOMEMADE LIVE!** (*People of the North* starts 7/26)

**3:00 FRESH GLASS**

**3:30 GET OUT OF TOWN, SERIES 1**

**4:00 COOK'S COUNTRY FROM AMERICA'S TEST KITCHEN**

**4:30 AMERICA'S TEST KITCHEN FROM COOK'S ILLUSTRATED**

**5:00 PATI'S MEXICAN TABLE**

**5:30 THIS OLD HOUSE**

**6:00 PBS NEWS WEEKEND**—John Yang anchors.

**6:30 TO DINE FOR WITH KATE SULLIVAN**—(Guest: Ken Burns)

**7:00 DISCO: SOUNDTRACK OF A REVOLUTION**—Discover the history of disco: its origins, triumphs, fall and legacy. *Part 3 of 3. Stayin' Alive.* Disco seemed untouchable by

the end of the 1970s, but an incited violent backlash led to its demise. Dive into disco's underground return, where it laid the foundations for electronic dance music.

**8:00 BEYONCÉ & SOLANGE: THE QUEEN OF POP AND HER SOUL SISTER**—A double portrait spotlights two exceptional artists. Beyoncé is among the biggest pop stars of our time, while Solange prioritizes her artistic aspirations over commercial success. The program explores the sisters' roots in Houston, Beyoncé's rise to fame and success as a solo artist, and Solange's journey as an independent artist.

**9:00 WETA ROCKS! ELTON JOHN: THE MILLION-DOLLAR PIANO**—Celebrate the iconic singer, songwriter and performer in a spectacular 2012 concert at The Colosseum at Caesars Palace in Las Vegas, featuring his most popular hits.

**10:30 BEYOND THE CANVAS**—*Art, Black Women Lead.* Explore the enormous contributions of Black women to the arts throughout American history.

**11:00 FINDING YOUR ROOTS WITH HENRY LOUIS GATES, JR.**—*Season 10 encore: Fathers and Sons. R*

**12M ICONIC AMERICA: OUR SYMBOLS AND STORIES WITH DAVID RUBENSTEIN**—*The Statue of Liberty. R*

## 6 Sunday

**6AM-9AM WETA KIDS PROGRAMMING**—See page 15.

**9AM WHITE HOUSE CHRONICLE**

**9:30 TO DINE FOR WITH KATE SULLIVAN**

**10AM DW EUROMAXX – LIFESTYLE EUROPE**

**10:30 MOTORWEEK**

**11AM HISTORY WITH DAVID RUBENSTEIN, SEASON 6**—(7/6).

**11AM FIRING LINE WITH MARGARET HOOVER** (as of July 13)

**11:30 TO DINE FOR WITH KATE SULLIVAN**—(Guest: Ken Burns)

**11:30 WASHINGTON WEEK WITH THE ATLANTIC** (as of July 13)

**12N A CAPITOL FOURTH 2025**—R

**1:30 BREAKING THE DEADLOCK: A POWER PLAY**—This program sets the stage for civil dialogue and ethics in political disagreements. A panel of influential figures participates in a hypothetical story around executive power by a pair of fictional, rival U.S. Presidents.

**2:30 TO DINE FOR WITH KATE SULLIVAN**—(Guest: Ken Burns)

**3:00 ICONIC AMERICA: OUR SYMBOLS AND STORIES WITH DAVID RUBENSTEIN**—*The Statue of Liberty. R*

**4:00 FINDING YOUR ROOTS WITH HENRY LOUIS GATES, JR.**—

*Season 10 encore: Fathers and Sons. R*

**5:00 WISDOM KEEPERS**—A series exploring life's fundamental questions features host Ray Suarez interviewing leading thinkers, including historians, ethicists, faith leaders and scientists. Additional episodes will stream at [pbs.org](https://pbs.org).

**6:00 PBS NEWS WEEKEND**—John Yang anchors. **Repeats Monday, 7am**

**6:30 LIVE FROM THE LBJ LIBRARY WITH MARK UPDEGROVE, SERIES 2**—A series hosted by journalist Mark Updegrove features interviews with thought leaders. *Episode 1. Bryan Cranston.* The award-winning actor discusses his journey from modest beginnings to TV icon. **Repeats Mon 7/7, 4:30pm; Fri 7/11, 8:30pm**

**7:00 ALAN CUMMING'S MOST LUXURIOUS TRAIN JOURNEYS: SCOTLAND**—The actor undertakes an epic

adventure aboard the *Royal Scotsman. Part 3 of 4.* Cumming visits the site of the battle Culloden and explores its impact on Scottish history. Then he



©ALBERTO E. RODRIGUEZ

**Saturday, July 5 at 8 p.m. on WETA PBS (4 p.m. on WETA Metro)**  
*Beyoncé & Solange: The Queen of Pop and Her Soul Sister* presents a dual biography of the two Knowles sisters.





KUDOS: ITV AND MASTERPIECE

#### Sunday nights on WETA PBS & WETA Metro

The Sunday-night program lineup continues, featuring crime series *Patience* (8 p.m.); mystery series *Grantchester*, *Series 10* on *Masterpiece* (9 p.m.), above, with Robson Green and Rishi Nair; and World War II drama *Atlantic Crossing* on *Masterpiece* (10 p.m.).

explores coastal marvels and takes a boat trip near the Isle of Skye. In *Garve*, he delves into the traditions of cattle drovers. And the on-board whiskey ambassador gives Alan a lesson on the water of life.

**8:00 PATIENCE**—The British police drama is adapted from the French series *Astrid*. *Part 4 of 6. The Locked Room*. A bestselling crime writer, Harry Franklin, is found dead behind locked doors. He was one of *Patience*'s favorite writers and she is intrigued by his death and his reclusive life. She helps make a breakthrough in the case. **Repeats 1am**

**9:00 GRANTCHESTER, SERIES 10 ON MASTERPIECE**—*Part 4 of 8*. Alpha and Geordie investigate witchcraft at a home for orphaned and disadvantaged children, run by Alpha's old friend. When a body is found, Alpha struggles to consider his friend a suspect. **Repeats 2am**

**10:00 ATLANTIC CROSSING ON MASTERPIECE**—A princess steals the heart of the U.S. president in a drama based on the World War II friendship of Franklin Roosevelt and Norwegian Crown Princess Martha. *Part 4 of 8. Fires Spread*. Martha is pressured to exploit her friendship with the president, who defies isolationists to push the Lend-Lease Act. Martha and the children get a surprise Christmas present. **Repeats 3am**

**11:00 ICONIC AMERICA: OUR SYMBOLS AND STORIES WITH DAVID RUBENSTEIN**—*The Statue of Liberty*. **R**

**12M-4AM** See the 7-11 p.m. listings.

## 7 Monday

**7:00 PBS NEWS HOUR**—Weeknights. Visit [pbs.org/newshour](https://pbs.org/newshour). **Repeats next day, 7am**

**8:00 ANTIQUES ROADSHOW: NEW YORK CITY, HOUR 3**—*Roadshow* visits NYC for show-stopping appraisals, including a Petrosino NYPD archive, ca. 1908; a 1943 Irving Berlin signed manuscript; and a tobacco baseball card collection, ca. 1910. **Repeats Tue 7/8, 3pm**

**9:00 GET OUT OF TOWN**—*Season 2 encore: Pittsburgh, PA*. WETA's local travel and adventure series features a weekend of fun in Pittsburgh. Mother-daughter hosts Laurita and Lauren Portee catch a baseball game, craft wineglasses at the Glass Center, and sample the sandwiches at Primanti Bros. **Repeats Tue 7/8, 4pm; Sat 7/12, 11:30pm**

**9:30 SIGNATURE DISH**—*Season 2 encore: Crossover Cuisine*. The innovative world of fusion cuisine, where culinary traditions blend and create something new, is the theme of this episode of WETA's local restaurant series. Host Seth Tillman stops by Imperfecto in D.C.'s West End and then heads to Virginia to visit Mama Tigre in Oakton and Wooboi in Alexandria. **Repeats Tue 7/8, 4:30pm**

**10:00 POV: IGUALADA: REFUSING TO KNOW YOUR PLACE**—Filmed over 15 years, this intimate portrait captures how, in a historic bid for the presidency, Black rural activist Francia Márquez stirred a national awakening in Colombia, transforming a grassroots movement into a powerful force for change and inspiring millions to rethink their nation's future and their place in it. (90 min.)

## 8 Tuesday

**8:00 FINDING YOUR ROOTS WITH HENRY LOUIS GATES, JR.**—In this series, join the Harvard scholar as he explores the genealogy of famous Americans. *Season 10 encore: Buried Secrets*. Gates helps rocker Sammy Hagar and actor Ed O'Neill uncover their roots, revealing secrets their ancestors went to great lengths to conceal—and celebrating the virtue of accepting one's relatives.

**Repeats Sat 7/12, midnight; Mon 7/14, 4pm**

**9:00 RENAISSANCE: THE BLOOD AND THE BEAUTY**—In an era torn by war, rivalry and bloodshed, great masterpieces were born. Witness the lives of iconic artists—Michelangelo, Leonardo and Raphael—as they craft beauty from chaos in this three-part series. *Part 1 of 3. Rise*. Michelangelo and Leonardo clash and compete in the fierce world of Renaissance Italy as they navigate a world of powerful patrons, violent warfare and artistic rivalry. **Repeats Wed 7/9, 3pm; Sat 7/12, 9pm, 1am, Sun 7/13, 5pm**

**10:00 SECRETS OF THE DEAD: LEONARDO, THE MAN WHO SAVED SCIENCE**—Leonardo da Vinci is well known for his inventions as well as his art. New evidence shows that many of his ideas were realized long before he sketched them out in his notebooks. Where did his concepts come from? **Repeats Wed 7/9, 4pm**

## 9 Wednesday

**8:00 WALKING WITH DINOSAURS**—*Part 3 of 6. Band of Brothers*. Follow as a group of armored dinosaurs battles to reach adulthood, pursued by a group of Utahraptors, one of the most formidable predators that's ever lived. **Repeats Thur 7/10, 3pm**

**9:00 HUMAN FOOTPRINT, SERIES 2**—*Part 3 of 6. Dressed to Kill*. From biotech labs to beaver ponds, from New York Fashion Week to Chile's textile graveyards, host Shane Campbell-Staton explores the impact of our fashion addiction, unraveling how the trends we chase to fit in and stand out leave a mark on our planet. **Repeats Thur 7/10, 4pm**

**10:00 NOVA: DINO BIRDS**—Why are birds the only dinosaurs still alive today? Rare fossil discoveries are revealing the secrets of bird evolution, telling the story of how some resilient feathered dinos became the vast array of colorful bird species that fill our skies.

## 10 Thursday

**8:00 WHITSTABLE PEARL**—*Part 3 of 6. Civil War*. When a recently retired DCI is shot dead during an English Civil War reenactment, Mike immediately suspects the victim's wife, who in turn hires Pearl to try to find out if she's being targeted as well. Pearl and Mike plan a date, but a miscommunication puts them at odds.

**9:00 THE MADAME BLANC MYSTERIES, SERIES 2**—*Special two-episode Season 2 sneak peek!* (Season 1 airs starting July 17.) *Episode 2*. Jeremy stumbles upon the body of a dead woman. The only clue to her identity is a Victorian comb in her pocket. Jean realizes it's a cake comb, but what would the woman be doing with that? **Repeats Fri 7/11, 3pm**

**10:00 UNFORGOTTEN, SERIES 5 ON MASTERPIECE**—*Part 2 of 6*. The team works to identify the body found in the chimney flue as forensics reveal the cause of death. **Repeats Fri 7/11, 4pm**

## 11 Friday

**8:00 WASHINGTON WEEK WITH THE ATLANTIC**—In WETA's weekly production, *The Atlantic* editor-in-chief Jeffrey Goldberg moderates a roundtable discussion with award-winning journalists who provide reporting and analysis of the major news stories from the nation's capital. Visit [pbs.org/washingtonweek](https://pbs.org/washingtonweek). **Rpts Sat 7/12, 6am, 6:30pm; Sun 7/13, 11:30am; Mon 7/14, 7:30am**

**8:30 LIVE FROM THE LBJ LIBRARY WITH MARK UPDEGROVE, SERIES 2**—*Episode 1. Bryan Cranston. R*

**9:00 THE GREAT AMERICAN RECIPE, SERIES 4**—In a new season, the competition returns to Nashville with eight talented home cooks showcasing their signature recipes. One home cook will be crowned the winner of *The Great American Recipe*. *Part 1 of 6. First Impressions*. Eight of the nation's top home cooks gather to make



MARCELL PITTI/BBC STUDIOS

**Tuesdays, July 8, 15 & 22 at 9 p.m. on WETA PBS & WETA Metro**  
Three-part series *Renaissance: The Blood and the Beauty* spotlights how, in an era torn by war, rivalry and bloodshed, the artists Michelangelo, Leonardo and Raphael created great art.

dishes representing their ideal meal and hometown.

**Repeats Sun 7/13, noon; Mon 7/14, 3pm**

- 10:00 AMERICAN MASTERS: MARCELLA** – Discover how celebrated writer Marcella Hazan shaped Italian cuisine in America. After immigrating to New York in the 1950s, she began making authentic Italian dishes and inspired millions of Americans with her cookbooks. (90 min.)

## 12 Saturday

**6AM-6PM See the Saturday, July 5 listings.**

- 6:00 PBS NEWS WEEKEND** – John Yang anchors.  
**6:30 WASHINGTON WEEK WITH THE ATLANTIC** – R  
**7:00 THE SAMUEL J. HEYMAN SERVICE TO AMERICA MEDALS 2025** – The awards ceremony of the nonpartisan, nonprofit Partnership for Public Service celebrates outstanding achievements by career federal employees. Filmed at the Johns Hopkins University Bloomberg Center, the program spotlights 23 individuals or teams whose work makes the nation safer, stronger, healthier and more prosperous.  
**8:00 TURN: WASHINGTON'S SPIES** – A Revolutionary War drama follows a spy ring working against the British. Based on Alexander Rose's book "Washington's Spies: The Story of America's First Spy Ring," the series follows a farmer who bands together with friends to form the Culper Ring. *Part 1 of 10.* At the dawn of the Revolutionary War, farmer Abraham Woodhull (Jamie Bell, *Billy Elliot*) is recruited by the Colonial Army to spy on the British. **Repeats Sun 7/13, 11pm**  
**9:00 RENAISSANCE: THE BLOOD AND THE BEAUTY** – *Part 1 of 3.* Rise. R  
**10:00 WETA ROCKS!: THE COMMODORES LIVE** – Join the legendary band for a concert featuring its greatest hits, including chart-toppers "Nightshift," "Lady (You Bring Me Up)," "Sail On," "Easy," "Too Hot Ta Trot," "Three Times a Lady," "Brick House" and more.  
**11:30 GET OUT OF TOWN** – *Season 2 encore: Pittsburgh, PA.* R  
**12M FINDING YOUR ROOTS WITH HENRY LOUIS GATES, JR.** – *Season 10 encore: Buried Secrets.* R  
**1AM RENAISSANCE: THE BLOOD AND THE BEAUTY** – *Part 1 of 3.* Rise. R

## 13 Sunday

**6AM-12N See the Sunday, July 6 listings.**

- 12N THE GREAT AMERICAN RECIPE, SERIES 4** – *Part 1 of 6.* First Impressions. R  
**1:00 MENUS-PLAISIRS – LES TROISGRS** – In his trademark *vérité* style, acclaimed filmmaker Frederick Wiseman explores the lives and famed culinary artistry of the Troisgrs family in the French countryside, spotlighting their restaurants and work, from sourcing ingredients and planning menus, to the organized chaos of the kitchen, to the ingenuity behind the creation of a dish.  
**5:00 RENAISSANCE: THE BLOOD AND THE BEAUTY** – *Part 1 of 3.* Rise. R  
**6:00 PBS NEWS WEEKEND** – John Yang anchors. **Repeats Monday, 7am**

- 6:30 LIVE FROM THE LBJ LIBRARY WITH MARK UPDEGROVE, SERIES 2** – A series hosted by author, historian and journalist Mark Updegrave features interviews with thought leaders. *Episode 2. Andrew Young.* The Ambassador reflects on his life, from the lessons he learned from his father while growing up in New Orleans to those he derived on the front lines of the civil rights movement working alongside Martin Luther King, Jr. **Repeats Fri 7/18, 8:30pm**

- 7:00 ALAN CUMMING'S MOST LUXURIOUS TRAIN JOURNEYS: SCOTLAND** – *Part 4 of 4.* Cumming sets sail to the sacred island of Iona, the cradle of Christianity in Scotland, and then continues on to Fingal's Cave on Staffa Island. The show visits Oban, Scotland's seafood capital, and, inland, the historic Scone Palace, the site of the first Scottish Parliament and the crowning place of Scottish Kings. In Dundee, Alan explores the complexities of tartan; and a grand finale unfolds with a traditional *ceilidh* celebration, capturing the spirit of Scotland. **Repeats midnight**

- 8:00 PATIENCE** – *Part 5 of 6.* *My Brother's Keeper.* A body disappears from the morgue. Was it taken by body snatchers or did the corpse 'walk' away? The victim is the brother of Patience's friend Billy. Could Billy's brother still be alive and if he is – where has he gone and who wanted him dead? **Repeats 1am**

- 9:00 GRANTCHESTER, SERIES 10 ON MASTERPIECE** – *Part 5 of 8.* Leonard's drinking lands him in a prison cell overnight. When he wakes up, the consequences only escalate from there. **Repeats 2am**

- 10:00 ATLANTIC CROSSING ON MASTERPIECE** – *Part 5 of 8.* *Empty Promises.* Martha uses dinner-table tactics to help Norway. The First Lady gives Martha unusual lessons in public speaking. The president gets on dangerous ground with Martha. **Repeats 3am**

- 11:00 TURN: WASHINGTON'S SPIES** – *Part 1 of 10.* R

- 1AM PATIENCE** – *Part 5 of 6.* *My Brother's Keeper.* R

- 2AM GRANTCHESTER, SERIES 10 ON MASTERPIECE** – *Part 5 of 8.* R

- 3AM ATLANTIC CROSSING ON MASTERPIECE** – *Part 5 of 8.* *Empty Promises.* R

## 14 Monday

- 7:00 PBS NEWS HOUR** – Weeknights. Visit [pbs.org/newshour](https://pbs.org/newshour). **Repeats next day, 7am**

- 8:00 ANTIQUES ROADSHOW: FORT WORTH, HOUR 2** – Discover hidden Texas treasures, including a Felipe Orlando abstract oil, ca. 1980; a German baroque lockbox ca. 1625; and a Green Bay Packers championship group, ca. 1965. Guess which of the appraised items is valued at \$75,000-\$200,000. **Repeats Tue 7/15, 3pm**

- 9:00 IF YOU LIVED HERE** – WETA's house-hunting series explores properties and neighborhoods throughout Metro D.C. while celebrating each area's history, culture and flavor. *Season 1 encore: H Street Corridor, DC.* The hosts join realtor Harrison Beacher to tour properties around the District's historic H Street and explore the neighborhood. **Repeats Tue 7/15, 4pm; Sat 7/19, 11:30pm**



COURTESY AMERICAN PUBLIC TELEVISION

**6:30 p.m. Sundays, 8:30 p.m. Fridays on WETA PBS**  
*Live from the LBJ Library with Mark Updegrave, Series 2* features more of the journalist's interviews with thought leaders and scholars such as historian Doris Kearns Goodwin (above).





MAX DUNCAN; COURTESY HARD TRUTH FILMS

**Monday, July 14 at 10 p.m. on WETA PBS**  
Independent film *POV: Made in Ethiopia* follows a massive Chinese factory complex's attempts at expansion in rural Ethiopia – and how it tests 3 women's faith in industrialization to the limit.

**9:30 SIGNATURE DISH** – Season 2 encore: *Just Desserts*. In this episode of WETA's local restaurant series, host Seth Tillman skips the main course and dives right into dessert, with visits to the neo-bistro Lutèce in Georgetown, the dessert shop Mr. Bake Sweets in Riverdale Park, MD, and The Conche in Leesburg, VA, where chocolate infuses everything on the menu – even the drinks. **Repeats Tue 7/15, 4:30pm**

**10:00 POV: MADE IN ETHIOPIA** – As Ethiopia's largest Chinese-run industrial park attempts an ambitious expansion, three women find themselves at the heart of a changing nation. Their interwoven stories reveal the complex human dimensions of global development. (90 min.)

## 15 Tuesday

**8:00 FINDING YOUR ROOTS WITH HENRY LOUIS GATES, JR.** – In this series, join the Harvard scholar as he explores the genealogy of famous Americans. *Season 10 encore: Hold the Laughter*. Gates uncovers the roots of comedians Bob Odenkirk and Iliza Shlesinger – two funny people whose family trees brim with dramatic stories – introducing them to relatives who took great risks to overcome enormous hardships. **Repeats Sat 7/19, midnight; Sun 7/20, 2pm**

**9:00 RENAISSANCE: THE BLOOD AND THE BEAUTY** – Part 2 of 3. *Rivalry*. Amid political upheaval in Florence, Michelangelo and Leonardo vie for artistic supremacy. The arrival of a young prodigy, Raphael, ignites the flames of their fierce and growing rivalry. **Repeats Wed 7/16, 3pm; Sat 7/19, 9pm, 1am, Sun 7/20, 5pm**

**10:00 FRONTLINE** – To be announced.

## 16 Wednesday

**8:00 WALKING WITH DINOSAURS** – Part 4 of 6. *The Pack*. 71 million years ago, a young Albertosaurus, a relative of T. rex, must prove herself in a deadly hunting pack or face starvation. Today, paleontologists in Canada uncover her remains, using evidence to reveal her battle for survival. **Repeats Thur 7/17, 3pm**

**9:00 HUMAN FOOTPRINT, SERIES 2** – Part 4 of 6. *The Honey Trap*. Everyone knows the honey bee, but it's just one bee species – there are 20,000 others. Humans have depended on bees, both wild and managed, for millennia. But as bee populations collapse around the world, can we save them before it's too late? **Repeats Thur 7/17, 4pm**

**10:00 NOVA: WHEN WHALES COULD WALK** – A spectacular fossil graveyard in the Sahara Desert reveals a 43-million-year-old whale that had four legs and could walk. Follow scientists as they search for new clues to how mammals moved from land into the sea to become the largest animals on Earth.

## 17 Thursday

**8:00 WHITSTABLE PEARL** – Part 4 of 6. *Disappearance at Oare*. Pearl helps a woman who received a note claiming that her missing husband did not die from suicide, connecting the case to a grief-counseling church group and a drowning years before. As Christmas approaches, Mike sinks into depression.

**9:00 THE MADAME BLANC MYSTERIES, SERIES 1** – Creator and co-writer Sally Lindsay (*Coronation Street*) stars as an antiques dealer who suddenly finds herself a widow and nearly bankrupt. She heads to France to seek answers. *Part 1 of 6*. Jean White is devastated when her husband Rory dies in France. Her distress grows when she learns he has left her penniless, leaving only a cottage in Sainte Victoire. There, she discovers Rory had been having an affair and a valuable ring is missing; she suspects foul play. **Repeats Fri 7/18, 3pm**

**10:00 UNFORGOTTEN, SERIES 5 ON MASTERPIECE** – Part 3 of 6. The victim's turbulent past comes to light. While Sunny takes a trip to Paris and Jess drops in on an unsuspecting potential suspect, the pair continue to clash. **Repeats Fri 7/18, 4pm**

## 18 Friday

**8:00 WASHINGTON WEEK WITH THE ATLANTIC** – Visit [pbs.org/washingtonweek](https://pbs.org/washingtonweek). **Repeats Sat 7/19, 6am, 6:30pm; Sun 7/20, 11:30am; Mon 7/21, 7:30am**

**8:30 LIVE FROM THE LBJ LIBRARY WITH MARK UDE-GROVE, SERIES 2** – Episode 2. *Andrew Young*. **R**

**9:00 THE GREAT AMERICAN RECIPE, SERIES 4** – Part 2 of 6. *Passing the Dish*. The home cooks are back for Week Two. They prepare a dish that shows support for someone in need; then it's holiday time, and the cooks create their favorite holiday recipes for the judges. **Repeats Sun 7/20, noon; Mon 7/21, 3pm**

**10:00 PATI JINICH EXPLORES PANAMERICANA** – Join D.C.-area chef Pati Jinich on a Pan-American journey exploring cultural connections as she travels from the top of Alaska through Alberta. *Part 1 of 3. Alaska – Wild Harvest*. Jinich travels from the northernmost place in the U.S. to a remote island community, Halibut Cove, discovering that subsistence living transcends differences. **Repeats Sun 7/20, 1pm; Mon 7/21, 4pm**

## 19 Saturday

**6AM–6PM See the Saturday, July 5 listings.**

**6:00 PBS NEWS WEEKEND** – John Yang anchors.

**6:30 WASHINGTON WEEK WITH THE ATLANTIC** – **R**

**7:00 CONCORD'S SECRET HISTORY** – In 1775, Americans celebrated the Bicentennial of the American War of Independence in Concord, MA. But official speeches did not mention that Concord had slavery in 1775, and that Massachusetts had been a key player in the North Atlantic slave trade. This film reveals how the history of slavery in Massachusetts and other northern states has been brought back into public consciousness.

**8:00 TURN: WASHINGTON'S SPIES** – Part 2 of 10. *Who By Fire*. Abe must discover who murdered a Royal Officer before Anna is framed for the crime. Ben and Caleb brutally interrogate Simcoe. **Repeats Sun 7/20, 11pm**

**9:00 RENAISSANCE: THE BLOOD AND THE BEAUTY** – Part 2 of 3. *Rivalry*. **R**

**10:00 WETA ROCKS!: THIRD EYE BLIND – LIVE AT RED ROCKS** – See the band's 2022 Red Rocks amphitheater concert. Third Eye Blind delivers a hit-filled performance featuring their songs "Graduate," "Jumper," "How's It Going to Be" and more.

**11:30 IF YOU LIVED HERE** – Season 1: *H Street Corridor, DC*. **R**  
**12M FINDING YOUR ROOTS WITH HENRY LOUIS GATES, JR.** – Season 10 encore: *Hold the Laughter*. **R**

**1AM RENAISSANCE: THE BLOOD AND THE BEAUTY** – Pt 2 of 3. *Rivalry*. **R**

## 20 Sunday

**6AM–12N See the Sunday, July 6 listings.**

**12N THE GREAT AMERICAN RECIPE, SERIES 4** – Part 2 of 6. *Passing the Dish*. **R**

**1:00 PATI JINICH EXPLORES PANAMERICANA** – Part 1 of 3. *Alaska – Wild Harvest*. **R**



**Wednesday, July 16 at 10 p.m. on WETA PBS & WETA Metro**  
**NOVA: When Whales Could Walk** visits the Sahara Desert, where a spectacular fossil graveyard reveals new clues as to how mammals moved from land into the sea to become Earth's largest animals.

**2:00 FINDING YOUR ROOTS WITH HENRY LOUIS GATES, JR. –**  
*Season 10 encore: Hold the Laughter. R*

**3:00 DANTE: INFERNO TO PARADISE –** A documentary by filmmaker Ric Burns explores the life and times of Dante Alighieri (1265–1321) and his masterpiece “The Divine Comedy” – one of the greatest achievements in the history of Western literature. *Part 1 of 2. The Inferno.* Learn the historical background of medieval Florence up to Dante's birth – and the dramatic details of Dante's life and “The Divine Comedy.”

**5:00 RENAISSANCE: THE BLOOD AND THE BEAUTY –** *Part 2 of 3. Rivalry. R*

**6:00 PBS NEWS WEEKEND –** *Repeats Monday, 7am*

**6:30 LIVE FROM THE LBJ LIBRARY WITH MARK UPDEGROVE, SERIES 2 –** A series hosted by author, historian and journalist Mark Updegrove features interviews with thought leaders. *Episode 3. Doris Kearns Goodwin, Part 1.* The Pulitzer Prize-winning historian discusses her path to documenting history – from childhood baseball scorekeeping to definitive works on the lives of Lincoln, Theodore Roosevelt, FDR and LBJ – and what makes compelling historical storytelling. *Repeats Fri 7/25, 8:30pm*

**7:00 THE REAL CROWN: INSIDE THE HOUSE OF WINDSOR –** A documentary series tells the story of Britain's royals and the intense public scrutiny of their lives, through feuds, heartbreak, sibling rivalries, affairs, divorces and deaths – in addition to assassination attempts, kidnappings, tabloid scandals and terrorist bombs. *Part 1 of 5. Love and Duty.* Members of the Royal Family wrestle with the ultimate dilemma: whether to choose love over duty to The Crown. *Repeats midnight*

**8:00 PATIENCE –** *Part 6 of 6. Pandora's Box.* A man dies on a bus after a violent coughing fit. The dead man turns out to have multiple identities and a history of eco-terrorism. Bea is warned off the case, but she refuses to stop investigating. *Repeats 1am*

**9:00 GRANTCHESTER, SERIES 10 ON MASTERPIECE –** *Part 6 of 8.* Alphy and Geordie investigate when a member of a rock band is murdered. Alphy struggles with some family history. *Repeats 2am*

**10:00 ATLANTIC CROSSING ON MASTERPIECE –** *Part 6 of 8. The Giant Awakes.* America enters the war, and Olav arrives from England. Missy grows suspicious of ties between Martha and the president, as does Olav. Meanwhile, a dastardly Nazi plot unfolds. *Repeats 3am*

**11:00 TURN: WASHINGTON'S SPIES –** *Part 2 of 10. Who By Fire. R*

**12M THE REAL CROWN: INSIDE THE HOUSE OF WINDSOR –** *Part 1 of 5. Love and Duty. R*

## 21 Monday

**7:00 PBS NEWS HOUR –** Weeknights. Visit [pbs.org/newshour](https://pbs.org/newshour). *Repeats next day, 7am*

**8:00 ANTIQUES ROADSHOW: INDIANAPOLIS, HOUR 1 –** Visit Indiana's capital city to uncover antique and vintage treasures such as a Norman Rockwell charcoal self-portrait, ca. 1976; a 1958 signed Indy 500 racing flag; and an 1883 Victorian wedding ensemble. Which is the top find? *Repeats Tue 7/22, 3pm*

**9:00 IF YOU LIVED HERE –** WETA's house-hunting series explores properties and neighborhoods throughout Metro D.C. *Season 1 encore: Shaw, DC.* Accompanied

by realtor Judy Cranford, the hosts visit properties on 9th Street, K Street and O Street and learn about the community. *Repeats Tue 7/22, 4pm; Sat 7/26, 11:30pm*

**9:30 SIGNATURE DISH –** *Season 2 encore: Best of Breakfast.* In WETA's local restaurant series, host Seth Tillman visits La Tejana in D.C.'s Mt. Pleasant neighborhood to sample the 95¢ breakfast taco, before heading to Poolsville, MD to try Locals Farm Market's famous chicken and waffles. The final stop is Any Day Now in D.C.'s Navy Yard for the scallion pancake breakfast sandwich. *Repeats Tue 7/15, 4:30pm*

**10:00 POV: THE RIDE AHEAD –** In this documentary, Samuel, turning 21, wants his independence – yet every rite of passage to adulthood is fraught with challenges. “No one tells you how to be an adult,” he says, “let alone an adult with a disability.” Can a community of disability activists help him follow his dreams? (90 min.)

## 22 Tuesday

**8:00 FINDING YOUR ROOTS WITH HENRY LOUIS GATES, JR.**

– In this series, join the Harvard scholar as he explores the genealogy of famous Americans. *Season 10 encore: Far and Away.* Gates explores the roots of journalist Sunny Hostin and actor Jesse Williams – telling long-lost stories of African and European ancestry that lead his guests to rethink their identities. *Repeats Wed 7/23, 4pm; Sat 7/26, midnight; Sun 7/27, 2pm*

**9:00 RENAISSANCE: THE BLOOD AND THE BEAUTY –** *Part 3 of 3. Redemption.* Michelangelo's rivalry with Raphael reaches new heights as they battle for Papal favor while a violent religious schism engulfs Europe and forces the artist to question everything. *Repeats Wed 7/23, 3pm; Sat 7/26, 9pm, 1am, Sun 7/27, 5pm*

**10:00 POV: MAYA LIN: A STRONG CLEAR VISION –** In this Oscar-winning film, revisit the story of Maya Lin – the young architect behind Washington, D.C.'s Vietnam Veterans Memorial whose design sparked controversy and public attacks. At the intersection of art, politics and creativity, she remained steadfast in her vision. (90 min.)

## 23 Wednesday

**8:00 WALKING WITH DINOSAURS –** *Part 5 of 6. The Journey North.* Travel back in time to the dangerous journey of the Pachyrhinosaurus, where their survival is at stake. During their annual migration hundreds of miles north, they face deadly predators and a threatening storm. *Repeats Thur 7/24, 3pm*

**9:00 HUMAN FOOTPRINT, SERIES 2 –** *Part 5 of 6. Dammed If You Do.* Host Shane Campbell-Staton travels from ancient aqueducts to modern mega-dams, following our age-old quest to tame water. On a Colorado River journey, he discovers how humanity's thirst for control has reshaped rivers – and civilization. *Thur 7/24, 4pm*

**10:00 NOVA: RISE OF THE MAMMALS –** Sixty-six million years ago, an asteroid wiped out the dinosaurs in a fiery global catastrophe. A new trove of fossils reveals how mammals took over, evolving into the huge array of species that rule Earth today.



**7 p.m. Sundays starting July 20 on WETA PBS**

*The Real Crown: Inside the House of Windsor* presents the inside story of Britain's Royal Family, spanning six decades of history. Above: Queen Elizabeth II (right) with Princess Margaret.



## 24 Thursday

- 8:00 WHITSTABLE PEARL** – *Part 5 of 6. A Cup O' Kindness.* When a mother takes her daughter out for a boat ride despite the father's wishes, the boat starts taking on water and the two need a rescue. Was it an accident, or were they targeted? Pearl investigates while Mike tries to enjoy his time off from police duty in the days before New Year's Eve.
- 9:00 THE MADAME BLANC MYSTERIES, SERIES 1** – *Part 2 of 6.* Jean learns from the police that her missing ring has been sent away as evidence, and that there is little to be done about threats from Rory's mistress. A distraction ensues when Jean is asked to look into an elderly woman's mystery dating back to the Nazi occupation of France. **Repeats Fri 7/25, 3pm**
- 10:00 UNFORGOTTEN, SERIES 5 ON MASTERPIECE** – *Part 4 of 6.* Sunny and Jess's personal lives go from bad to worse while they struggle to stay focused at work. Meanwhile, the suspect list grows, and a mother and son are put under the microscope. **Repeats Fri 7/25, 4pm**

## 25 Friday

- 8:00 WASHINGTON WEEK WITH THE ATLANTIC** – Visit [pbs.org/washingtonweek](https://pbs.org/washingtonweek). **Repeats Sat 7/26, 6am, 6:30pm; Sun 7/27, 11:30am; Mon 7/28, 7:30am**
- 8:30 LIVE FROM THE LBJ LIBRARY WITH MARK UPDEGROVE, SERIES 2** – *Episode 3. Doris Kearns Goodwin, Part 1. R*
- 9:00 THE GREAT AMERICAN RECIPE, SERIES 4** – *Part 3 of 6. The Bakes Are High.* Things heat up in Week Three: first, the home cooks showcase freshly made bread, and then they create a dozen of their tastiest fruity treats for the annual Great American Recipe bake sale. Who rises to the challenge? **Repeats Sun 7/27, noon; Mon 7/28, 3pm**
- 10:00 PATI JINICH EXPLORES PANAMERICANA** – *Part 2 of 3. Juneau & Whitehorse: Sister Cities.* The chef explores Alaska's capital and the capital of Canada's Yukon Territory. She finds a pioneering culture of artistry and entrepreneurship thriving alongside the unforgiving wilderness. **Repeats Sun 7/27, 1pm; Mon 7/28, 4pm**

## 26 Saturday

**6AM-6PM See the Saturday, July 5 listings.**

- 6:00 PBS NEWS WEEKEND** – John Yang anchors.  
**6:30 WASHINGTON WEEK WITH THE ATLANTIC** – R



TOM HAYWARD, BBC STUDIOS

**Sundays, July 27 & Aug. 3 at 8 p.m. on WETA PBS & WETA Metro**  
*Lucy Worsley Investigates, Series 2* features the historian exploring several dramatic chapters and haunting mysteries in British history. The July 27 episode spotlights Jack the Ripper.

- 7:00 NOVA: REVOLUTIONARY WAR WEAPONS** – How did a ragtag army defeat the most powerful army in the world to win American independence? Discover the key military technologies that aided the colonies' forces.
- 8:00 TURN: WASHINGTON'S SPIES** – *Part 3 of 10. Of Cab-bages and Kings.* On the run from the British, Ben is betrayed by his own militia. Abe travels with Richard to New York to spy. Mary confronts Anna. **Repeats Sun 7/27, 11pm**
- 9:00 RENAISSANCE: THE BLOOD AND THE BEAUTY** – *Part 3 of 3. Redemption. R*
- 10:00 WETA ROCKS! TOMMY EMMANUEL: LIVE AT THE SYDNEY OPERA HOUSE** – Join the guitar virtuoso for performances in his native Australia recorded in May 2023. Featured are his beloved songs "Tall Fiddler," "Mombasa," and "Country Wide," plus an iconic arrangement of "Classical Gas" and an exciting Beatles medley.
- 11:30 IF YOU LIVED HERE** – *Season 1 encore: Shaw, DC. R*  
**12M FINDING YOUR ROOTS WITH HENRY LOUIS GATES, JR.** – *Season 10 encore: Far and Away. R*
- 1AM RENAISSANCE: THE BLOOD AND THE BEAUTY** – *Pt 3 of 3. Redemption. R*

## 27 Sunday

**6AM-12N See the Sunday, July 6 listings.**

- 12N THE GREAT AMERICAN RECIPE, SERIES 4** – *Part 3 of 6. The Bakes Are High. R*
- 1:00 PATI JINICH EXPLORES PANAMERICANA** – *Part 2 of 3. Juneau and Whitehorse: Sister Cities. R*
- 2:00 FINDING YOUR ROOTS WITH HENRY LOUIS GATES, JR.** – *Season 10 encore: Far and Away. R*
- 3:00 DANTE: INFERNO TO PARADISE** – A documentary by filmmaker Ric Burns explores the life and times of Dante Alighieri (1265-1321) and his masterpiece "The Divine Comedy." *Part 2 of 2. Redemption.* Explore Dante's experience in exile, and his completion of the last two parts of the Comedy, shortly before his death in Ravenna.
- 5:00 RENAISSANCE: THE BLOOD AND THE BEAUTY** – *Part 3 of 3. Redemption. R*
- 6:00 PBS NEWS WEEKEND** – John Yang anchors. **Repeats Monday, 7am**
- 6:30 LIVE FROM THE LBJ LIBRARY WITH MARK UPDEGROVE, SERIES 2** – A series hosted by author, historian and journalist Mark Updegrave features interviews with thought leaders. *Episode 4. Doris Kearns Goodwin, Part 2.* The historian discusses her book "An Unfinished Love Story," on her relationship with her husband Richard Goodwin, whose soaring speechwriting for JFK, LBJ and RFK helped to shape the idealism of the 1960s. **Repeats Fri 8/1, 8:30pm**
- 7:00 THE REAL CROWN: INSIDE THE HOUSE OF WINDSOR** – A documentary series tells the story of Britain's royals and the intense public scrutiny of their lives. *Part 2 of 5. Threats.* The Royal Family comes face to face with danger while Prince Charles searches for a bride. **Repeats midnight**
- 8:00 LUCY WORSLEY INVESTIGATES, SERIES 2** – Historian Lucy Worsley re-investigates some of the most dramatic chapters in British history. *Jack the Ripper.* Worsley explores how the coverage of the unsolved 19th-century case of London's most infamous serial killer created a template for our modern-day true crime obsession. **Repeats 1am**
- 9:00 GRANTCHESTER, SERIES 10 ON MASTERPIECE** – *Part 7 of 8.* Cathy and Mrs. Chapman's new business venture hits a serious obstacle. Geordie secretly intervenes in Alphy's personal life. **Repeats 2am**
- 10:00 ATLANTIC CROSSING ON MASTERPIECE** – *Part 7 of 8. The Gift.* A Nazi agent slips through the cracks, putting the children at risk. Martha travels to England and gets a shock. A Norwegian war hero meets a tragic fate. **Repeats 3am**
- 11:00 TURN: WASHINGTON'S SPIES** – *Part 3 of 10. Of Cab-bages and Kings. R*
- 12M THE REAL CROWN: INSIDE THE HOUSE OF WINDSOR** – *Pt 2 of 5. Threats. R*

WETA Magazine is published monthly by the Greater Washington Educational Telecommunications Association for its members. Three dollars of each member's dues are designated for its subscription. WETA occasionally exchanges member names with other organizations. If you wish that your name not be exchanged, please call Audience Services at 703-998-2724. ©2025 by Greater Washington Educational Telecommunications Association. All rights reserved. No part of this magazine may be reproduced in any form without written permission. Periodical postage paid at Arlington, VA 22210 and additional offices. Send address changes to WETA, 3939 Campbell Avenue, Arlington, Virginia 22206. Volume 38, Number 7. ISSN No. 1041-2700.

PRINTED ON RECYCLED PAPER 

Publisher Mary Stewart  
 Editor Jeff Giese  
 Design MANIFEST LLC

Editorial and Advertising Offices  
 3939 Campbell Ave.  
 Arlington, VA 22206

## 28 Monday

- 8:00 ANTIQUES ROADSHOW: INDIANAPOLIS, HOUR 3** – Travel to Indiana for hidden treasures including an 1898 Alphonse Mucha JOB poster; a 1974 George Nakashima “Kent Hall” floor lamp; and a 1961 Ty Cobb-signed baseball. Which is the big find? **Repeats Tue 7/29, 3pm**
- 9:00 IF YOU LIVED HERE** – WETA’s house-hunting series explores properties and neighborhoods throughout Metro D.C. *Season 1 encore: Old Town Alexandria*. The hosts join realtor Susie Klein to tour rowhouses on Alfred, Wilkes and Prince streets. Architect/historian Al Cox joins in. **Repeats Tue 7/29, 4pm**
- 9:30 SIGNATURE DISH** – *Season 2 encore: French Delights*. WETA’s local restaurant series explores the rich tapestry and traditions of French gastronomy. Stops are Chez Billy Sud in Georgetown for *oeufs en meurette* (eggs in a red wine sauce); Le Clou in DC’s NoMa neighborhood for *ris de veau* (sweetbreads basted in brown butter); and Bastille in Old Town, Alexandria for *magret de canard* (slow-seared Moulard duck). Seth Tillman hosts. **Repeats Tue 7/29, 4:30pm**
- 10:00 VOCES: SLUMLORD MILLIONAIRE** – In this documentary film, see an intimate portrait of those deeply affected by New York City’s rapid gentrification and skyrocketing rent costs. Meet the determined individuals and dedicated attorneys fighting corrupt landlords for the fundamental human right to a home. (90 min.)

## 29 Tuesday

- 8:00 FINDING YOUR ROOTS WITH HENRY LOUIS GATES, JR.** – In this series, join the Harvard scholar as he explores the genealogy of famous Americans. *Season 10 encore: Mean Streets*. Gates traces the roots of comedian Tracy Morgan and actor Anthony Ramos – two native New Yorkers whose roots stretch to surprising places and contain inspiring stories of survival. **Repeats Wed 7/30, 3pm**
- 9:00 AMERICAN EXPERIENCE: RUTHLESS: MONOPOLY’S SECRET HISTORY** – Discover the fascinating history behind America’s favorite board game. Part detective story and part pop culture commentary, the film explores what makes the game – a celebration of unbri-dled capitalism – such an enduring favorite. **Repeats Wed 7/30, 4pm**
- 10:00 FRONTLINE** – *To be announced.*

## 30 Wednesday

- 8:00 WALKING WITH DINOSAURS** – *Part 6 of 6. Island of Giants*. Inspired by a remarkable discovery in Portugal, this is the story of Lusotitan, a colossal, long-necked dinosaur – one of the largest ever to walk the Earth – 150 million years ago, as it embarks on a quest for love. **Repeats Thur 7/31, 3pm**
- 9:00 HUMAN FOOTPRINT, SERIES 2** – *Part 6 of 6. Vanishing Act*. From fossils entombed in tar to cells frozen in hope, host Shane Campbell-Staton traces the arc of extinction from prehistory to the present. On a global journey, he meets species on the brink of oblivion and the people who won’t give up on them. **Repeats Thur 7/31, 4pm**
- 10:00 NOVA: ANCIENT MAYA METROPOLIS** – The ancient Maya built large complex cities with pyramids and temples that served as centers for a thriving civilization. Follow archaeologists exploring evidence into the mystery of why the cities were abandoned.

## 31 Thursday

- 8:00 WHITSTABLE PEARL** – *Part 6 of 6. The Man on the Blue Plaque*. A skeleton washes up on the shore, and the vic-tim has a personal connection to Pearl. Pearl’s budding romance with Mike is threatened when he identifies a suspect close to home.
- 9:00 THE MADAME BLANC MYSTERIES, SERIES 1** – *Part 3 of 6*. Judith and Jeremy’s 1980s-themed wedding anniver-sary party takes a turn when an attendee is discovered dead. Caron asks Jean for her expertise in identifying some of the items found at the crime scene, but what she ultimately uncovers goes far beyond antiques.
- 10:00 UNFORGOTTEN, SERIES 5 ON MASTERPIECE** – *Part 5 of 6*. Sunny and Jess attempt a reset in their working rela-tionship as they follow clues in the case.

Via Antenna 26.3  
Comcast 266/1147  
Cox 801  
Fios 472  
RCN 38

**WETA**

**PBS  
KIDS**

The WETA PBS Kids channel offers a safe haven for young viewers, presenting educational programming 24 hours each day, seven days a week.

### WEEKDAYS ON WETA PBS KIDS

- Clifford the Big Red Dog, 6am
- Sesame Street, 6:30am
- Pinkalicious & Peterrific, 7am
- Curious George, 7:30am
- Sesame Street, 8am
- Milo, 8:30am
- Work It Out Wombats!, 9am, 9:30am
- Daniel Tiger’s Neighborhood, 10am, 10:30am
- Carl the Collector, 11am, 11:30am
- Donkey Hodie, 12n, 12:30pm
- Elinor Wonders Why, 1pm
- Rosie’s Rules, 1:30pm, 2pm
- Xavier Riddle and the Secret Museum, 2:30pm
- Alma’s Way, 3pm, 3:30pm (Molly of Denali, 3pm as of 7/7)
- Lyla in the Loop, 4pm
- Arthur, 4:30pm (Lyla in the Loop as of 7/7)
- Odd Squad, 5pm
- Skillsville, 5:30pm
- Wild Kratts, 6pm, 6:30pm
- Lyla in the Loop, 7pm
- Nature Cat, 7:30pm (Arthur as of 7/7)
- Molly of Denali, 8pm (Nature Cat as of 7/7)
- Hero Elementary, 8:30pm
- Cyberchase, 9pm
- Let’s Go Luna! 9:30pm
- Rosie’s Rules, 10pm

Visit [weta.org/schedule](http://weta.org/schedule) for complete WETA PBS Kids listings.

### WEEKDAYS ON WETA PBS, 8 AM – 3 PM

- Lyla in the Loop, 8am
- Carl the Collector, 8:30 am
- Daniel Tiger’s Neighborhood, 9am
- Rosie’s Rules, 9:30am
- Sesame Street, 10am
- Work It Out Wombats!, 10:30am
- Donkey Hodie, 11am
- Pinkalicious & Peterrific, 11:30am
- Elinor Wonders Why, 12n
- Nature Cat, 12:30pm (Alma’s Way as of 7/7)
- Molly of Denali, 1pm
- Xavier Riddle and the Secret Museum, 1:30pm
- Wild Kratts, 2pm
- Alma’s Way, 2:30pm (Wild Kratts as of 7/7)

### SUNDAYS ON WETA PBS, 6 AM – 9 AM

- Mister Rogers’ Neighborhood, 6am
- Arthur, 6:30am
- Wild Kratts, 7am
- Alma’s Way, 7:30am (Wild Kratts as of 7/13)
- Lyla in the Loop, 8am
- Carl the Collector, 8:30am





Via Antenna 26.2  
Comcast 265, 1146  
Cox 800  
Fios 474  
RCN 39, 602

British Television at Its Best

The WETA UK channel is devoted to the best in British television programming, presenting beloved classics and contemporary series around the clock, seven days a week. WETA UK offers a full schedule of fine entertainment programming – featuring drama, mystery and comedy – in addition to documentary series and news reports.

JULY P.M. PROGRAMMING ON WETA UK

VISIT WETA.ORG/SCHEDULE FOR A PROGRAM LINEUP

	SUNDAY	MONDAY	TUESDAY	WEDNESDAY	THURSDAY	FRIDAY	SATURDAY
12pm	Last Tango in Halifax, Series 1	Sanditon, Series 2 on Masterpiece through 7/1; Series 3 runs 7/2-7/9; Miss Scarlet and The Duke, Series 1 on Masterpiece runs 7/10-7/17; Series 2 runs 7/18-7/25; Series 3 starts 7/28					• 7/5, noon: Emma
12:30pm							• 7/5, 1-2:33pm: Persuasion
1pm	• Ridley, Series 2 • Patience, Series 1 (starts 7/13)	Call the Midwife, Series 13 runs through 7/9; Series 14 runs 7/10-7/21; Series 10 starts 7/22					• 7/5, 2:33pm: British Antiques Roadshow
1:30pm							• 7/12, noon-3pm: Sense and Sensibility
2pm	Foyle's War, Series 6 & 7 (Series 7 runs past 3:30pm)	• Alan Carr: Agatha Christie (7/7); • Margaret: Rebel Princess (7/14-7/21); • L. Worsley's Royal Photo Album (7/28)	• 7/1, 2pm: Emma • 7/1, 3-4:33pm: Persuasion • 7/1: 4:33pm: British Antiques Roadshow • 7/8: 2-5pm: Sense and Sensibility • 7/15+7/22, 2-5pm: Pride and Prejudice • 7/29, 2pm: L. Worsley's Royal Photo Album; 3pm: L. Worsley's Royal Myths & Secrets; 4pm: Hotel Portofino, Series 1	Miss Friman's War, Series 2	Midsomer Murders, Series 22	• Ridley, Series 2  • Patience, Series 1 (starts 7/11)	• 7/19+7/26, noon-3pm: Pride and Prejudice
2:30pm							
3pm	Marie Antoinette, Series 2	Sisi: Austrian Empress Series 2		Father Brown, Series 11	Broadchurch, Series 2	• Hotel Portofino, Series 3 • Victoria & Albert: The Wedding (7/12+7/19) • L. Worsley's Royal Photo Album (7/26)	
3:30pm							British Antiques Roadshow
4pm	• Ridley Road on Masterpiece • Grantchester, Series 10 (starts 7/13)	The Trouble with Maggie Cole	Marie Antoinette, Series 2	The Sister Boniface Mysteries, Series 2	Grantchester, Series 9 on Masterpiece (starts 7/4)	Marie Antoinette, Series 2	
4:30pm							
5pm	Miss Fisher's Murder Mysteries, Series 1 & 2	BBC News: The Context	BBC News: The Context	BBC News: The Context	BBC News: The Context	BBC News: The Context	Grantchester, Series 9 on Masterpiece
5:30pm		BBC News America	BBC News America	BBC News America	BBC News America	BBC News America	
6pm	British Antiques Roadshow	Still Open All Hours	Still Open All Hours	Still Open All Hours	Still Open All Hours	Still Open All Hours	Ireland with Michael
6:30pm	Ireland with Michael	As Time Goes By	As Time Goes By	As Time Goes By	As Time Goes By	As Time Goes By	British Antiques Roadshow
7pm	• 7pm: Lucy Worsley's Royal Myths and Secrets  • 7/6, 8pm-10pm: Travelling Auctioneers, Series 2	Celebrity Antiques Road Trip	Celebrity Antiques Road Trip	Celebrity Antiques Road Trip	Celebrity Antiques Road Trip	Celebrity Antiques Road Trip	• 7/5+7/12, 7pm: L. Worsley: Holmes vs. Doyle  • Starting 7/19, 7pm: Professor T (UK), Series 1
7:30pm							
8pm	• 7/6, 10pm: L. Worsley's Palace Secrets  • 7/13 & 7/20, 8-11pm: Treasures w/ Bettany Hughes	• 7/7: Sense and Sensibility • 7/14+7/21: Pride and Prejudice • 7/28, 8pm: Lucy Worsley's Royal Photo Album • 7/28, 9pm: Lucy Worsley's Royal Myths & Secrets • 7/28, 10pm: Hotel Portofino, Series 1	Foreign Favourites  • 8pm: Miss Friman's War, Series 2  • 9pm: Sisi: Austrian Empress, Series 2  • 10pm: Marie Antoinette, Series 2	Midsomer Murders, Series 22	• Ridley, Series 2 • Patience, Series 1 (starts 7/10)	Masterworks Showcase  • 8pm: Foyle's War, Series 6 & 7 (Series 7 starts 7/11)  • After 9:30pm: British Antiques Roadshow • 7/4, 10pm: Ridley Road on Masterpiece • Starting 7/11, 10pm: Grantchester, Series 10 on Masterpiece	• 8pm: Baptiste, Series 2 on Masterpiece  • 9pm: Halifax: Retribution
8:30pm							
9pm	• 7/27, 8pm: Real Story: Mr Bates vs The Post Office			Father Brown, Series 11	Broadchurch, Series 2 (starts 7/3)		
9:30pm	• 7/27, 9pm: Lucy Worsley's Royal Photo Album						
10pm	• 7/27, 10pm: Nature: Wild Ireland: Kingdom of Stone	The Sister Boniface Mysteries, Series 2	Halifax: Retribution				
10:30pm							
11pm	Still Open All Hours (two episodes)	BBC News	BBC News	BBC News	BBC News	BBC News	• 7/5+7/12, 10pm: DI Ray, Series 2 • 7/5+7/12, 11pm: L. Worsley: Holmes v. Doyle • 7/19+7/26, 10-11:30pm: Agatha &...the Curse of Ishtar/Midnight Murders • 7/19+7/26, 11:30pm: British Antiques Roadshow
11:30pm		[See 8pm]	[See 8pm]	[See 8pm]	[See 8pm]	[See 8pm]	
	SUNDAY	MONDAY	TUESDAY	WEDNESDAY	THURSDAY	FRIDAY	SATURDAY



# WETA UK Highlights

## Treasures with Bettany Hughes

Sundays, July 13 & 20, 8-11 p.m.  
on WETA UK

English author and presenter Bettany Hughes, a historian of classical antiquity and host of an extraordinary portfolio of documentary films, investigates the most remarkable treasures of civilization that reveal the story of humanity. In the six episodes of *Treasures* (Series 1), Hughes travels across the ancient world, visiting Greece, Malta, Gibraltar, Mediterranean islands, Istanbul and the Arabian Peninsula, exploring shipwrecks, temples and much more, and unearthing finds from unfolding excavations. The 2021 series — which spotlights places and objects and traces their significance within human history — is armchair traveling at its most vivid, championing what ordinary people throughout time have achieved through the sheer force of will, inspiration and collaboration. Binge-watch the series with WETA Passport.



SANDSTONE GLOBAL PRODUCTIONS

## Sense and Sensibility & Pride and Prejudice

Mondays, July 7-21, 8-11 p.m. on WETA UK

This month, Monday-night adaptations of Jane Austen's classic novels continue: *Sense and Sensibility* (June 7) presents Andrew Davies' 2008 adaptation of the Austen novel and features Hattie Morahan and Charity Wakefield heading an all-star cast. Marianne Dashwood wears her heart on her sleeve; her sister Elinor is sensitive to social convention. Will the sisters learn that sense must mix with sensibility if they are to find happiness? *Pride and Prejudice* (July 14 & 21) presents the now-classic 1995 adaptation by Andrew Davies that stars Jennifer Ehle and Colin Firth in Austen's best-known regency romance, filmed in England's stately homes and mansions. The production won a Primetime Emmy — and a BAFTA for Ehle. Binge these series with WETA Passport.



©BBC

## Professor T, Series 1

7 p.m. Saturday starting July 19 on WETA UK

See it from the beginning! Ben Miller (*Death in Paradise*) stars as eccentric criminologist Professor Jasper Tempest in the English-language remake of Belgian series *Professor T*. In Series 1 (six episodes) the troubled academic, a lecturer at the Cambridge Institute of Criminology, teaches students the science of crime while trying to keep his OCD and germophobia under control. The professor's buttoned-down world is slowly undone, however, when he is persuaded by one of his former students, a police detective, to assist her team in investigating a serial criminal. While Professor T's knowledge of psychology and his brilliant mind prove invaluable, the cracks in his emotional defenses begin to show. Binge-watch three seasons (18 episodes) of the drama with WETA Passport. New episodes (Season 4) premiere on WETA PBS in August and will stream with WETA Passport.



COURTESY/LAWRENCE CENDROWIC



WETA Metro is the streaming and broadcast television channel that features popular PBS programming and engaging content curated for our local audience, including offerings spotlighting the Metro D.C. community. The channel is simulcast with WETA PBS most evenings. Each day on WETA Metro, enjoy local programs, news and public affairs offerings (such as *PBS News Hour*, weekdays at 6 p.m./11 p.m.), and lifestyle and culture shows.

**VISIT [WETA.ORG/SCHEDULE](https://weta.org/schedule) FOR A COMPLETE PROGRAM LINEUP**

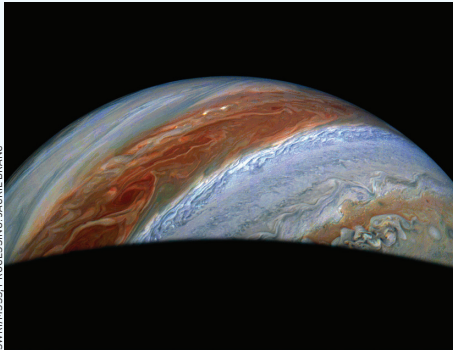
*Stream at [weta.org/livestream](https://weta.org/livestream) or via the PBS app or Amazon Prime*

## “Summer of Space” programs

**Saturdays, 8-11 p.m. on WETA Metro**

**E**ach Saturday night starting in July, WETA presents a slate of “Summer of Space” programming that spotlights the planets and space exploration. Programs include the dazzling miniseries *The Planets* and other episodes from science series *NOVA*; the reprised film *A Year in Space* and its sequel (July 5), following an International Space Station mission; independent films such as *Space: The Longest Goodbye* (July 12), exploring the psychological impact of space travel; NASA films from its *Other Worlds* series

(July 19) that follows scientists using the James Webb Space Telescope to look at our solar system and beyond; and films from NASA’s Jet Propulsion Laboratory series *JPL and the Space Age* (starting July 26).



JUPITER JAN. 2015; IMAGE DATA: NASA/JPL-CALTECH/  
SWIRIMSS; PROCESSING: JACKIE BRANC

## Blue: The Life and Art of George Rodrigue

**Thursday, July 10 at 10 p.m. on WETA Metro**

**B***lue: The Life and Art of George Rodrigue* tells the remarkable story of the renowned and admired Louisiana artist (1944-2013). A man of his surroundings and culture and a vigorously collected painter, the “Blue Dog” creator’s life story and artistic contributions are a vivid part of the Louisiana landscape and play an important part in the American art world and beyond. From his culturally significant works that helped shine a light on Cajun

life to his Blue Dog catalog, Rodrigue’s art is filled with meaning, color and joyous storytelling. His artistic journey took him from his studio “down the bayou” to status as a globally admired artist.



COURTESY AMERICAN PUBLIC TELEVISION

## POV: Union

**Thursday, July 17 at 8 p.m. on WETA Metro**

**N**on-fiction series *POV* presents a documentary spotlighting a diverse group of Amazon warehouse workers, led by Chris Smalls, as they spearhead a bold and often-controversial grassroots unionization campaign at a company fulfillment center in Staten Island, New York. The odds are stacked against them. Through intimate cinema vérité, the 90-minute film follows the workers as they find themselves up against a tech industry giant with unlimited resources, without major support from national unions

or politicians, and navigating internal divisions within their ranks. *Union* documents the campaign from day one, sharing a human drama about a battle for power in today’s globalized economic landscape.



COURTESY POV

The WETA World channel is a 24/7 news and public affairs service devoted to nonfiction programming, sharing broad perspectives, stories and ideas. WETA World informs and educates, presenting acclaimed documentaries and domestic and international news broadcasts. The channel features a slate of original programs that examine issues with an array of voices and illuminate conflicts, movements and cultures around the globe.

**VISIT [WETA.ORG/SCHEDULE](https://weta.org/schedule) FOR A COMPLETE PROGRAM LINEUP**

*Stream WETA World at [weta.org](https://weta.org) or via the PBS app*

## American Political Figures in the Spotlight

**3 p.m. weekdays in July on WETA World**

Throughout July, WETA World features weekday afternoon, feature-length, acclaimed biographies of renowned thinkers and leaders on the American political landscape. The series *American Masters* at 3 p.m. spotlights U.S. Senator Daniel Patrick Moynihan (July 7); conservative intellectual, writer, and *Firing Line* founder-host William F. Buckley Jr. (July 8); Governor Jerry Brown (July 9) and American attorney and First Amendment champion Floyd Abrams (July 10). Later in the month, the channel presents 3 p.m. *American Experience* comprehensive biographies of U.S. presidents Jimmy Carter (July 23), Ronald Reagan (July 28-29) and Lyndon Baines Johnson (July 30-31).



REAGAN AND BUCKLEY IN THE OVAL OFFICE  
PHOTO: WHITE HOUSE PHOTOGRAPHIC OFFICE

## Expedition with Steve Backshall, Series 2

**9 p.m. Tuesdays on WETA World**

In this series, British naturalist Steve Backshall takes voyages of discovery to explore some of the most remote locations on Earth. In the production's second season, on a mission to discover fresh insights about wildlife in different corners of the globe, Backshall and his team of experts dive with sharks in Mexico's Eastern Pacific, search for apes in Africa's unexplored jungles, paddle into the heart of brown bear territory in the Far East, explore the uncharted volcanic underworld of Saudi Arabia's ancient deserts, and climb the Djangart mountains of Kyrgyzstan in search of endangered snow leopards. Binge-watch the series with WETA Passport.



COURTESY TRUE TO NATURE LTD.

## Independent Lens: The Tuba Thieves

**Saturday, July 26 at 8 p.m. on WETA World**

What is the role of sound and what does it mean to listen? In a film that premiered at the Sundance Film Festival in 2023, hard of hearing filmmaker Alison O'Daniel uses a series of 2011-2013 tuba thefts in Los Angeles high schools as a jumping-off point to explore these questions. Through several deaf people — including Nyke Prince (right), who is given a drum kit, and Geovanny Marroquin, a saxophone player impacted by the thefts — telling stories in the film equivalent of a unique game of Telephone, the central mystery of *The Tuba Thieves* isn't about the theft of instruments; it is about the nature of sound itself.



NYKE PRINCE BY JUDY PHU





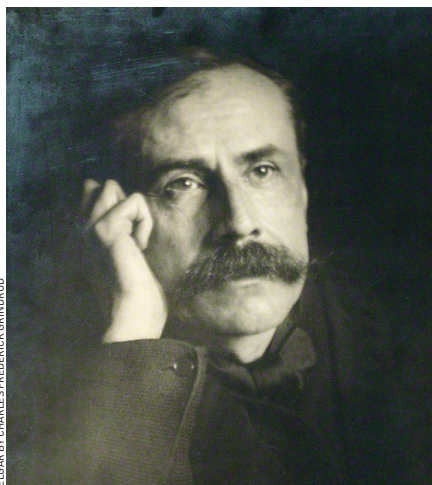
BRESCIA L'AMISANO/TEATRO ALLA SCALA

La Scala's *Eugene Onegin*

## Eugene Onegin on Opera Matinee

Saturday, July 5 at 1 p.m.

**O**pera Matinee on **July 5** presents *Eugene Onegin*, Tchaikovsky's heartrending opera based on the prose poem by Alexander Pushkin, telling the tale of a man's arrogance that leads to lost love and friendship. The performance, recorded at La Scala in Milan, features Alexey Markov. Other 1 p.m. Saturday opera presentations this month include a La Scala performance of Antonio Cesti's *L'Oronoea* (**July 12**), a comedy of misunderstandings, tricks, masquerades and twists — and one of the most performed operas during the Baroque era; from Les Arts Florissants and Opera Comique in Paris, Rameau's *Les fêtes d'Hébé* (**July 19**); and, from Teatro Regio in Turin, Daniel Auber's *Manon Lescaut* (**July 26**).



ELGAR BY CHARLES FREDERICK GRINDROD

Edward Elgar

## Bach, Elgar & More on Choral Showcase

Sundays at 9 p.m.

**C**horal Showcase opens this month on **July 6** with a long-form work by Benedict Sheehan: *Akathist*, a hymn of thanksgiving and a prayer for hope and courage in the face of injustice. Then, the **July 13** broadcast features four of Johann Sebastian Bach's first and finest cantatas, composed at age 22 during his time in Arnstadt and Mühlhausen. On **July 20**, the program presents a new recording of Edward Elgar's *The Dream of Gerontius* from Paul McCreesh and The Gabrieli Consort and Players. And on **July 27**, it's music from Renaissance master Josquin des Prez, alongside those who inspired him, and who he in turn inspired. Tune in to *Choral Showcase*, Sundays at 9 p.m. on WETA Classical.



ACMF, HARPER'S FERRY, WV. PHOTO BY BRIAN CHRISTOPHER

## Find Classical Concerts via *ClassicalScore.org*

Visit the **WETA Classical blog** for offerings

**C**heck out WETA Classical's blog for weekly recommendations on great music in and around Greater Washington this summer. From the Chesapeake to the Appalachians, classical music is at play in the great outdoors all season long. World-class artists will be performing at Wolf Trap, the Appalachian Chamber Music Festival (left), the Chesapeake Chamber Music Festival, and the Staunton Music Festival in the Blue Ridge Mountains, to name but a few music series. Enjoy orchestral favorites and full opera productions under the stars, guided hikes and accompanying concerts, chamber music at vineyards and breweries, and more. Combine great music with summer fun; visit [classicalscore.org](http://classicalscore.org) each Wednesday for the next week's performances.

# Classical for Washington

## Beware the Green-Eyed Monster!: Verdi's *Otello* on NSO Showcase

Wednesday, July 2 at 9 p.m. on WETA Classical

By Nicole Lacroix, On-Air Host

Last June, Gianandrea Noseda and the National Symphony Orchestra inaugurated a new series which they called “Opera in Concert.” Their first offering was Verdi’s *Otello*. Maestro Noseda, who is also the General Music Director at the Zurich Opera, wrote that in performing concert opera, “what I try to achieve is for the orchestra to play in a more flexible, in a more *cantabile* [singing] way. I’m convinced that sometimes opera in concert will serve the music more, without any kind of distraction.”

“*Otello*,” he added, is “the penultimate opera composed by Verdi in his seventies — so he was a very mature composer. It’s the second of three operas with Shakespearean subjects: the first is *Macbeth*, and the third [and his last opera] is *Falstaff*. *Otello* is a very complex and refined opera. In terms of orchestration, it’s a step forward from the achievement in *Aida* and the *Requiem* that were the two pieces composed before *Otello*. And of course, it’s a drama of jealousy, anger, envy — of revenge and power. There are also elements of racism, because of course Iago is also against Otello because Otello is a Moor. He cannot accept that someone not White is just given power by Venice.”

This month’s *NSO Showcase* program on WETA Classical will feature the recording — by WETA engineer Charles Lawson — of the NSO’s Kennedy Center performance. The orchestra was joined by an international cast of singers including the Armenian tenor and frequent interpreter of Otello, Arsen Sghomonyan, Italian lyric soprano Erika Grimaldi as Desdemona, and Russian baritone Roman Burdenko as Iago. The choral forces featured the Choral Arts Society of Washington, the University of Maryland Concert Choir, and the Children’s Chorus of Washington — a powerful combination for the cataclysmic storm that opens the opera!



Maestro Noseda leads the National Symphony Orchestra



The NSO, choirs and soloists perform *Otello*

WETA Classical’s *NSO Showcase* is the next best thing to having a seat at the stunning live performance. Take it from the *Washington Classical Review*: “Noseda is...an Italian opera guy...he likes grace...but he also gets drama. The result was scintillating, edge-of-the-seat Verdi, played throughout with an extra awareness of just how beautiful the score really is.”

Tune in to *NSO Showcase* for Verdi’s *Otello* in concert on July 2 or stream the program this month at [wetaclassical.org](http://wetaclassical.org). The broadcast caps the *NSO Showcase* season; join me again in October!



## WETA Passport

Stream news, drama, history and much more with WETA Passport, our popular member benefit that provides you with access to an extensive library of the best public television programs! You're ready to activate now at [pbs.org/passport](https://pbs.org/passport) if you see a four-word activation code above your name and address at left; or go to [weta.org/passport](https://weta.org/passport) to make your qualifying donation of \$60 (or \$5 monthly) to start enjoying WETA Passport today.

ADVERTISEMENT



# Celebrating our country together

This Independence Day, join us as we honor the connections that make our communities strong.