

WETA

NOVEMBER 2024
MAGAZINE FOR MEMBERS



LEONARDO

DA VINCI

A FILM BY KEN BURNS,
SARAH BURNS AND DAVID McMAHON

Florentine Films & WETA production premieres Nov. 18-19 at 8pm

WETA Focus



At this momentous juncture in our nation's political history, WETA's acclaimed PBS News productions *PBS News Hour*, *PBS News Weekend* and *Washington Week with The Atlantic* — public television's marquee news and public affairs programs — are critical, trusted resources for the American public. Tune in or stream these programs as our esteemed news operation follows developments and reports breaking news on the air and online — before, on, and beyond November 5. On Election Day, *PBS News Hour* will air at 6 p.m. We then follow that broadcast with an extended PBS News special beginning at 7 p.m., covering the voting returns and analyzing the results into the night from the WETA television studios in Shirlington, Virginia. Amna Nawaz and Geoff Bennett co-anchor the special; details are on page 1.

Also this month, we are very proud to premiere the two-part, four-hour film *Leonardo da Vinci*, an exciting new production of WETA and Florentine Films that is directed by our longtime friends and partners Ken Burns, Sarah Burns and David McMahon, who together have created riveting documentaries

such as *Muhammad Ali* and *The Central Park Five*. The fascinating new production explores the life, work and imagination of the visionary genius renowned as a painter, draughtsman, engineer and scientist, taking us into his vibrant world in Renaissance Italy. The film — our 38th collaboration with Ken, and his first non-American subject — spotlights one of humankind's most innovative minds, examining the depths of Leonardo da Vinci's curiosity and the wide array of his extraordinary accomplishments. Learn more about this engaging film on pages 2-3.

I invite you to join WETA for a special local preview and discussion of *Leonardo da Vinci* with the filmmakers in downtown Washington on November 12. Details are below.

In other programming this month, watch for more installments of our popular local house-hunting series *If You Lived Here* as the program's new hosts explore properties and neighborhoods in the national capital area. Enjoy *WETA Arts*, our local culture series, as it marks Veterans Day and also visits local art institutions. Catch an intriguing *NOVA* miniseries on engineering, and on *Nature*, follow the life story of beloved naturalist Sir David Attenborough. And cast another ballot this month — for your favorite classical composition — in our annual Thanksgiving week countdown on WETA Classical.

Thank you for watching, listening and streaming — and for your ongoing support of WETA's services to the public.

Sharon Percy Rockefeller

Sharon Percy Rockefeller
President and Chief Executive Officer, WETA

Attend a Special Nov. 12 Event for WETA Members: *Leonardo da Vinci* Film Preview and Discussion

Join WETA for a preview and discussion of *Leonardo da Vinci*, a film by Ken Burns, Sarah Burns and David McMahon, on Tuesday, November 12 at 7 p.m. at Lisner Auditorium at The George Washington University. The screening will be followed by a panel discussion that features the three filmmakers and is moderated by *Washington Post* editor and columnist Alyssa Rosenberg. Attendance is free but registration is required. Visit weta.org/leonardoevent to learn more and to sign up for tickets online. This event is made possible by Bank of America.

WETA – ON THE AIR & ONLINE

WETA PBS

26.1 via antenna
Comcast 26, 219, 800, 1026
Cox 26, 1003, 1026
DirecTV 26, 26-1, Stream
Dish 8076 Fios 26, 526
RCN 26, 613
YouTube.com/wetapbs

WETA UK

26.2 via antenna
Comcast 265, 1146
Cox 800
Fios 474
RCN 39, 602

WETA Metro

26.5 via antenna
weta.org/livestream
PBS app Cox 802
YouTube TV
Hulu + Live TV
Comcast 270, 1148
Fios 470 RCN 599

WETA World

26.4 via antenna
Fios 475
RCN 37
Stream at weta.org

Election 2024 Specials

PBS News VOTE 2024: Election Coverage

**WETA-produced coverage airs
Tuesday, Nov. 5 starting at 7 p.m.
on WETA PBS & WETA Metro**

On Election Day 2024 after *PBS News Hour* (6 p.m.), PBS News at 7 p.m. begins presenting live special coverage of the 2024 presidential, congressional and gubernatorial elections on WETA PBS and WETA Metro — and on PBS stations nationwide. The election coverage, extending into the night, streams on PBS News' website (pbs.org/newshour) and social platforms. Co-anchored by Amna Nawaz and Geoff Bennett, coverage will include reporting from PBS News Hour Capitol Hill and Trump campaign correspondent Lisa Desjardins; White House and Harris campaign correspondent Laura Barrón-López from the Harris campaign headquarters; national correspondent William Brangham from the Trump campaign headquarters; national correspondent and PBS News Weekend anchor John Yang in Pennsylvania; correspondent and PBS News Hour West anchor Stephanie Sy in Arizona; correspondent Miles O'Brien in Georgia; senior correspondent Judy Woodruff; and PBS station reporters around the country.

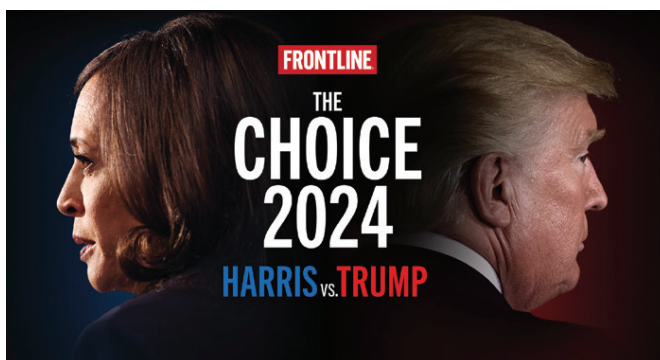
Analysis will be provided by editor-in-chief of the *Cook Political Report* Amy Walter, Republican strategist Kevin Madden, Democratic strategist Faiz Shakir, *Washington Post* associate editor Jonathan Capehart and *New York Times* op-ed columnist David Brooks. Election results will be announced as races are called by The Associated Press.



MINE MORGAN

Frontline: The Choice 2024: Harris vs. Trump

**WETA Metro: Nov. 2, 9 p.m.;
WETA PBS: Nov. 3 at 1 p.m.
& Monday, Nov. 4 at 10 p.m.;
stream on the PBS App**



L-R: JUSTIN SULLIVAN/POOL VIA REUTERS; BRENDAN SMIALOWSKI FOR AP/GETTY IMAGES

WETA reprises the quadrennial *Frontline* special *The Choice*, which presents a journalistic investigation of the lives, influences and ideas of the major-party candidates for U.S. president. The two-hour documentary, which premiered in September, reports on Kamala Harris and Donald Trump as they seek the presidency. Taking viewers inside key moments in each candidate's life, the documentary examines who Harris and Trump are, how they lead, what shaped their lives and their characters, and how they arrived at their dueling visions for America's future.

The special program presents striking insights. From award-winning filmmaker Michael Kirk, who with his team has made five prior installments of *The Choice* and more than 25 documentaries about the Obama, Trump and Biden eras, *The Choice 2024* draws on dozens of revealing interviews with those who know Trump and Harris best — friends, advisors and critics, as well as authors, journalists and political insiders — to present deeply reported narrative arcs of both candidates' lives, going all the way back to their childhoods.

For program and membership inquiries, visit weta.org or call 703-998-2724.

WETA PBS Kids

26.3 via antenna
Comcast 266, 1147
Cox 801
Fios 472
RCN 38

WETA Online

weta.org
weta.org/passport
weta.org/pbsapp
weta.org/learningmedia

WETA Classical

WETA 90.9 FM Washington, D.C.
WGMS 89.1 FM Hagerstown
wetaclassical.org
vivalavoce.org
WETA Classical App

LEONARDO

DA VINCI

A FILM BY KEN BURNS,
SARAH BURNS AND DAVID McMAHON



**Florentine Films and WETA production airs Monday-Tuesday,
Nov. 18-19 at 8 p.m. on WETA PBS & WETA Metro; stream on the PBS App**

A new two-part, four-hour film directed by WETA partners Ken Burns, Sarah Burns and David McMahon explores the life and work of the 15th century polymath Leonardo da Vinci (1452-1519), renowned filmmaker Ken Burns's first non-American subject. *Leonardo da Vinci* — a production of Florentine Films and WETA — looks at how the artist influenced and inspired future generations. Through Leonardo's paintings and thousands of pages of drawings and writings, the film explores one of humankind's most curious and innovative minds, finding in the Renaissance man's soaring imagination and profound intellect the foundation for a conversation we are still having today: what is our relationship with nature and what does it mean to be human?

Born out of wedlock to a notary and a peasant woman, Leonardo distinguished himself as an apprentice to a leading Florentine painter and later served as a military architect, cartographer, sculptor, and muralist for hire. His paintings and drawings, such as *Mona Lisa*, *The Last Supper* and *Vitruvian Man*, are among the most celebrated, revered works of all time (*Ginevra de' Benci*, page 3, at the National Gallery of Art, is the only Leonardo da Vinci painting in America). His art, however, was often equaled by his other pursuits.

Leonardo's personal story is told within the larger context of the Renaissance, a blossoming of art and architecture informed by mathematics and science,

and an awareness of the natural world, but also steeped in a renewed interest in classical ideals. *Leonardo da Vinci* follows the artist's evolution as a draughtsman and painter, scientist and engineer, who explored an astonishing array of subjects including painting, philosophy, engineering, warfare, anatomy and geography, among many others. Though he intended to publish his writings, he never did, but the film delves into those he left behind to get inside his mind as he strove to master the laws of nature and apply them to his endeavors.

Inside the Film

The documentary marks a significant change in the team's filmmaking style, which includes using split screens with images, video and sound from different periods to further contextualize Leonardo's art and scientific explorations.

Set against the rich backdrop of Renaissance Italy at a time of skepticism and freethinking, regional war and

religious upheaval, the film brings the artist's towering achievements to life through his prolific notebooks (written in a backwards script, so as not to smear the ink as he wrote with his left hand); various accounts of his life; and on-camera interviews with modern scholars, artists, engineers, inventors and admirers. "As we set out to explore Leonardo's life, we realized that while he was very much a man of his time, he was also interested in something more universal,"

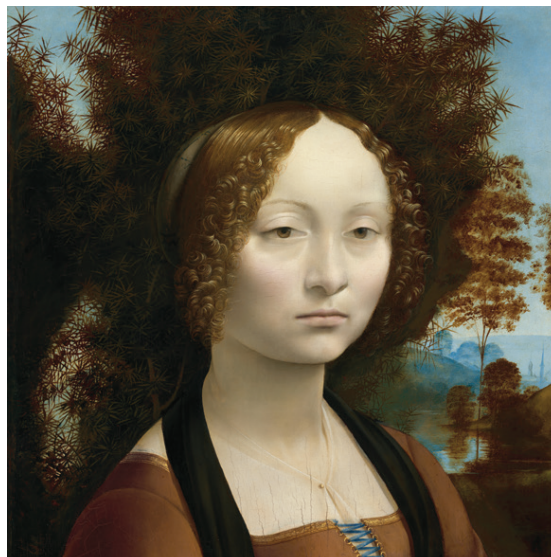


"No single person can speak to our collective effort to understand the world and ourselves. But Leonardo had a unique genius for inquiry, aided by his extraordinary skills as an artist and scientist, that helps us better understand the natural world that we are part of and to appreciate more fully what it means to be alive and human."

– Ken Burns

said Sarah Burns. "Leonardo was uniquely focused on finding connections throughout nature, something that strikes us as very modern today, but which of course has a long history."

"Though we follow Leonardo's personal journey and explore his artistic and scientific accomplishments, we're also really focused on what went on in his mind and on understanding the depths of his curiosity. To do this we use material from his notebooks mixed with archival film, photos and sound, along with our cinematography and visual effects," said David McMahon. "Leonardo's thinking was so unique, and in many ways timeless, that our traditional approach alone would have been insufficient."

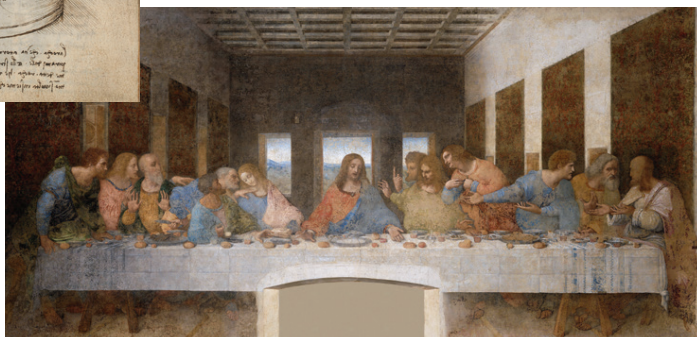
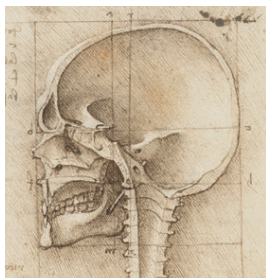


Leonardo da Vinci weaves together an international group of experts, as well as others influenced by Leonardo who continue to find a connection between his artistic and scientific explorations and life today. As the filmmaker and Leonardo admirer Guillermo del Toro says at the beginning of the film, "the modernity of Leonardo is that he understands that knowledge and imagination are intimately related."

Educational Resources & More

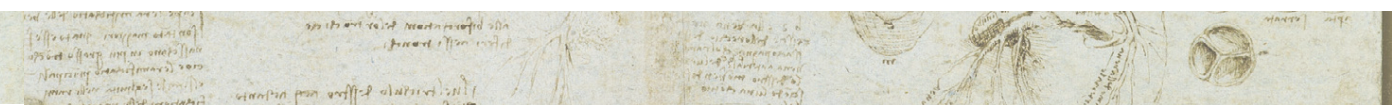
Leonardo da Vinci was written by David McMahon and Sarah Burns. The film features cinematography by Buddy Squires and narration by Keith David. The voice of Leonardo is read by the Italian actor Adriano Giannini. The film's score was created by Caroline Shaw.

The broadcast of *Leonardo da Vinci* is accompanied by educational materials for middle and high school classrooms, highlighting recent research and perspectives. The materials will be available at the "Ken Burns in the Classroom" collection at pbslearningmedia.org. These resources include videos, primary sources, and classroom materials for grade 5-12 educators. WETA is coordinating community engagement projects nationwide surrounding the film's content and has created a discussion guide for libraries, museums and other organizations. Join the conversation via [#LeonardoPBS](https://twitter.com/LeonardoPBS) and learn more about the film at pbs.org/leonardodavinci.



Corporate funding for *Leonardo da Vinci* was provided by Bank of America. Major funding was provided by the Corporation for Public Broadcasting, and by The Better Angels Society and by its individual members The Paul and Sandra Montrone Family; Stephen A. Schwarzman; Diane and Hal Brierley; Carol and Ned Spieker; Michael and Sandy Collins; Mario J. Gabelli; The Lynch Foundation; McCloskey Family Charitable Trust; Cappy and Janie McGarr; and John and Leslie McQuown. Funding was also provided by Gilbert S. Omenn and Martha Darling; the Alfred P. Sloan Foundation; and the Robert and Mercedes Eichholz Foundation. Local broadcast of the film is sponsored by the National Academies of Sciences, Engineering, and Medicine.

Leonardo da Vinci image credits: Pg 2: *Portrait of Leonardo da Vinci*, unknown artist, c.16th cent., Le Gallerie degli Uffizi; *The Head of the Virgin in Three-Quarter View Facing Right*, c.1508-12, Met. Museum of Art/Art Resource. Pg 3: *Ginevra de' Benci*, c.1474-1478, National Gallery of Art, Washington; *Sketch of a mechanism with a tempered spring*, c.1490, Biblioteca Nacional de España; *Skull sectioned*, c.1489, Royal Collection Trust/© His Majesty King Charles III, 2024/Bridgeman Images; *The Last Supper*, c.1494-1498, Santa Maria delle Grazie, Milan, Italy.



New Hosts Explore Neighborhoods

WETA local house-hunting series *If You Lived Here* premieres three new Season 4 episodes this month, spotlighting more neighborhoods around Greater Washington. New episodes air on three Monday nights in November, with two more slated to air in December, and additional new installments rolling out in early 2025. Season 4 features hosts Jennifer (Jen) Osborn and Ricardo Frederick Evans, longtime area residents who made their debut on the program in October. This month, the series spotlights the following communities:



LUZIE ALBERS FOR WETA

Hosts Jen and Ricardo in Occoquan



**Three new Season 4 episodes air Mondays,
Nov. 4, 11 & 25, 9 p.m. on WETA PBS,
8 p.m. on WETA Metro; stream on the PBS app**

- **Cleveland Park, DC (Nov. 4)** — Starting out at the Rosedale Conservancy greenspace, hosts Jen and Ricardo visit three homes with realtor Christine Basso Fitzgerald and learn about the history of the community's Tregaron Conservancy and the neighborhood's longstanding commitment to the arts.
- **Occoquan/Lorton, VA (Nov. 11)** — With realtor Theo Daubresse, the hosts explore properties and learn about the history of Occoquan's first automated mill, its Artists' Undertaking Gallery, and Lorton's renovated Workhouse Arts Center.
- **College Park, MD (Nov. 25)** — Jen and Ricardo join realtor Don Bunuan in touring residences in the community that is home to the University of Maryland. Along the way, they visit the archives of Hornbake Library and the College Park Aviation Museum to discover the rich history of the neighborhood.

Following each premiere, the new episodes are available to stream on the PBS App and at weta.org/ifyoulivedhere.

Support for *If You Lived Here* is provided by the Yuen Foundation.



USAF/DEFENSE VISUAL INFO. DIST. SERVICE

USAF Honor Guard Drill Team on *WETA Arts for Veterans Day*

**Monday, Nov. 11 at 9:30 p.m. on WETA PBS;
8:30 p.m. WETA Metro; stream on the PBS App**

In November, WETA's Emmy Award-winning production *WETA Arts* marks Veterans Day with a segment spotlighting the achievements and artistry of the elite United States Air Force Honor Guard Drill Team. At Joint Base Anacostia-Bolling, the current squad perfects their skills — including synchronized bayoneted rifle handling routines — and prepares the next generation of airmen to create this thrilling performance art. The program also stops in at ARTECHOUSE — Washington's leading immersive technology-driven art showcase — an interactive space designed for experimental,

large-scale installations by cutting-edge artists. There, the exhibition "Twilight Zone: Hidden Wonders of the Ocean" explores the bioluminescent realm beneath the waves in an artistic expression of scientific discovery.

Wrapping up the November episode is a visit to the Kreeger Museum, home to artworks by household names such as Picasso, Van Gogh and Monet. Series host Felicia Curry meets with the museum's director, Helen Chason, for a guided look at the property, its legacy, and its future. *WETA Arts* repeats throughout the month and streams at weta.org and on the PBS App.

Father Brown & Sister Boniface Mysteries

New seasons of the dramas air
Thursdays starting Nov. 7 on WETA PBS

Mark Williams and Lorna Watson reprise their roles as the Cotswolds sleuths at the center of popular BBC period dramas *Father Brown* (based on short stories by G.K. Chesterton) and *Sister Boniface Mysteries*. In episodes new to WETA, we return to the beautiful English countryside of the 1950s: In *Father Brown, Series 11*, the charismatic clergyman sleuth of fictional Kembleford undertakes investigations at a food faire, probes a real-life crime at a crime-writing festival, and digs into a village rivalry that turns deadly. When his friend Sister Boniface is implicated in a murder, Father Brown must prove her innocence. In her own new Series 3 episodes, the crime-solving, forensics-loving nun aids the police department of aptly named Great Slaughter in cracking cases, such as when the head perfumer of a fragrance dynasty is found dead, a renowned organist is murdered mid-tune, and a guest is kidnapped at a cult sci-fi convention.



BBC STUDIOS/GARY MOYES

NOVA: Building Stuff

Wednesdays, Nov. 13, 20 & 27 at 9 p.m.
on WETA PBS & WETA Metro;
stream on the PBS App

A three-part *NOVA* miniseries highlights the essential role engineering plays in the world around us, following creative engineering experts as they undertake fascinating projects. The series invites audiences to experience the ups and downs with engineers as they design, build and test their way through challenges, inspiring the inner “maker” in all of us. The three episodes are *Boost It!* (Nov. 13), exploring ways we access and shape the world beyond our natural abilities; *Reach It!* (Nov. 20), examining how today’s engineers are designing and building creative new ways for us to get around — and off — our planet; and *Change It!* (Nov. 27), spotlighting ways we alter our surroundings to better suit our needs. Engineer, educator and entrepreneur Dr. Nehemiah Mabry hosts.



©NICHOLAS J. KLEIN/SHUTTERSTOCK

POV: The Body Politic

Monday, Nov. 25 at 10 p.m.
on WETA PBS;
Nov. 30 at 8 p.m. on WETA Metro;
stream on the PBS App

A new *POV* film follows Mayor Brandon Scott as he risks his political future to try to save Baltimore from chronic gun violence. *The Body Politic* pulls back the curtain on local American politics to explore how change can happen in a city embroiled in a fight over justice and equity. This directorial debut of filmmaker Gabriel Francis Paz Goodenough, a third-generation Baltimorean, spotlights Millennial idealist Scott during his leadership campaign and first year as mayor as the city contends with funding shortages and escalating crime. Through unfettered access to the politician, the film illuminates his commitment to his plan and his principles. Can his holistic approach lead to healing and serve as a blueprint for the rest of the nation?



Baltimore City Mayor Brandon Scott

GABRIEL FRANCIS PAZ GOODENOUGH

Stream with WETA Passport



Stream your favorite shows with WETA Passport, a member benefit that offers access to a vast library of superb programs available for streaming on demand. To learn how to access programming with WETA Passport, visit weta.org/passporthelp.



Call the Midwife Holiday Specials

Before a new holiday special rolls out in December from popular series *Call the Midwife*, enjoy the specials from previous seasons 10-13, which begin streaming with WETA Passport starting Nov. 25.



The First Lady

Viola Davis, Michelle Pfeiffer and Gillian Anderson star as three of America's First Ladies in a series that delves into the women's personal and political lives. Stream 10 episodes now with WETA Passport.



WETA Cinema Classics

With WETA Passport, stream a collection of more than 130 classic films from the golden age of Hollywood. Visit weta.org/cinema to browse the films and find curated mysteries, westerns, comedies and more.



The Attenborough Collection

With the *Nature* film *Attenborough's Life Journey* premiering on Nov. 20, find more WETA Passport programs featuring eminent BBC natural historian Sir David Attenborough at weta.org/attenborough.



Pioneers of Television, Series 2

A nostalgic celebration of classic TV shows spotlights programs and celebrities that made broadcast history in westerns, superhero series, medical dramas, science fiction, sitcoms and more. Stream 6 Series 2 episodes with WETA Passport as of Nov. 1.



Highclere: Behind the Scenes

Follow the lives of Lord and Lady Carnarvon and their loyal staff at Highclere Castle — the manor in the drama *Downton Abbey* — as they strive to make this year a success for the grand estate. Stream 5 episodes with WETA Passport as of Nov. 1.

Also streaming with WETA Passport: Need cooking inspiration this season? Watch episodes of renowned late chef Julia Child's original public television series *The French Chef*, available now for streaming. *Bon appétit!*

Primetime

WETA PBS in November



Visit weta.org/schedule for the most up-to-date schedule information.

■ Denotes WETA productions, co-productions and presentations

	8:00	8:30	9:00	9:30	10:00	10:30
1 Fri	Washington Week with <i>The Atlantic</i>	The David Rubenstein Show: Peer to Peer Conversations, Series 3	Great Performances: <i>Land of Gold</i>			Am. Anthems: Make Tomorrow Come Today
2 Sat	WETA Cinema Classics: <i>The General</i>			WETA Cinema Classics: <i>The General</i> (encore)		
3 Sun	Ridley, Series 2 (<i>The Memory Jar</i> , Pt 2)		<i>The Marlow Murder Club</i> on Masterpiece (Pt 2 of 4)		<i>Wolf Hall</i> on Masterpiece (Pt 2 of 6) (to 11:03pm)	
4 Mon	Antiques Roadshow: Celebrating Native American Heritage		If You Lived Here, Season 4: Cleveland Park, DC	Get Out of Town, Season 2: Williamsburg, VA	Frontline: The Choice 2024: Harris vs. Trump (to 12m)	
5 Tue	(from 7pm) PBS News VOTE 2024: Election Coverage					
6 Wed	Nature: San Diego: America's Wildest City		NOVA: Decoding the Universe: Quantum		Secrets of the Dead: The Princes in the Tower	
7 Thur	Father Brown, Series 11 (Ep 1 of 10. <i>The Kembleston Olympics</i>)		Sister Boniface Mysteries, Series 3 (Ep 1 of 8. <i>Never Too Deadly to Die</i>)		Professor T, Series 2 (Pt 1 of 6. <i>Ring of Fire</i>)	
8 Fri	Washington Week with <i>The Atlantic</i>	The David Rubenstein Show: Peer to Peer Conversations, Series 3	Salute to Service 2024: A Veterans Day Celebration		Salute to Service 2024: A Veterans Day Celebration (encore)	
9 Sat	WETA Cinema Classics: <i>Godzilla: King of the Monsters!</i>			WETA Cinema Classics: <i>Godzilla: King of the Monsters!</i> (encore)		
10 Sun	<i>Howards End</i> on Masterpiece (Pt 1 of 4)		<i>The Marlow Murder Club</i> on Masterpiece (Pt 3 of 4)		<i>Wolf Hall</i> on Masterpiece (Pt 3 of 6) (to 11:03pm)	
11 Mon	Antiques Roadshow: Extraordinary Finds 3		If You Lived Here, Season 4: Occoquan/Lorton, VA	WETA Arts	Independent Lens: Make Peace or Die: Honor the Fallen (to 11:30pm)	
12 Tue	Finding Your Roots w/ Henry Louis Gates, Jr., Encore: <i>Write My Name in the Book of Life</i>		American Experience: American Coup: Wilmington 1898			
13 Wed	Nature: Lions of the Skeleton Coast		NOVA: Building Stuff (Pt 1 of 3. <i>Boost It!</i>)		Secrets of the Dead: Lost Treasures of Angkor – The Discovery	
14 Thur	Father Brown, Series 11 (Ep 2 of 10. <i>The Forensic Nun</i>)		Sister Boniface Mysteries, Series 3 (Ep 2 of 8. <i>House of Misfit Dolls</i>)		Professor T, Series 2 (Pt 2 of 6. <i>The Mask Murders</i>)	
15 Fri	Washington Week with <i>The Atlantic</i>	The David Rubenstein Show: Peer to Peer Conversations, Series 3	Great Performances: Rodgers and Hammerstein's 80th Anniversary: My Favorite Things			
16 Sat	WETA Cinema Classics: <i>One-Eyed Jacks</i>					<i>One-Eyed Jacks</i> (encore, to 1am)
17 Sun	<i>Howards End</i> on Masterpiece (Pt 2 of 4)		<i>The Marlow Murder Club</i> on Masterpiece (Pt 4 of 4)		<i>Wolf Hall</i> on Masterpiece (Pt 4 of 6) (to 11:03pm)	
18 Mon	Leonardo da Vinci (Pt 1 of 2. <i>The Disciple of Experience</i>)				Leonardo da Vinci (Pt 1 of 2. <i>The Disciple of Experience</i>) (encore, to 12m)	
19 Tue	Leonardo da Vinci (Pt 2 of 2. <i>Painter-God</i>)				Leonardo da Vinci (Pt 2 of 2. <i>Painter-God</i>) (encore, to 12m)	
20 Wed	Nature: Attenborough's Life Journey		NOVA: Building Stuff (Pt 2 of 3. <i>Reach It!</i>)		Secrets of the Dead: Lost Treasures of Angkor – King's Gold	
21 Thur	Father Brown, Series 11 (Ep 3 of 10. <i>The Hermit of Hazelnut Cottage</i>)		Sister Boniface Mysteries, Series 3 (Ep 3 of 8. <i>Professor Y</i>)		Professor T, Series 2 (Pt 3 of 6. <i>The Family</i>)	
22 Fri	Washington Week with <i>The Atlantic</i>	The David Rubenstein Show: Peer to Peer Conversations, Series 3	Great Performances: <i>Patsy Cline: Walkin' After Midnight</i>			American Anthems: Life Is Sweet
23 Sat	WETA Cinema Classics: <i>To Kill a Mockingbird</i>					<i>To Kill a Mockingbird</i> (encore, to 1am)
24 Sun	<i>Howards End</i> on Masterpiece (Pt 3 of 4)		<i>Howards End</i> on Masterpiece (Pt 4 of 4)		<i>Wolf Hall</i> on Masterpiece (Pt 5 of 6) (to 11:04pm)	
25 Mon	Antiques Roadshow: Out of This World		If You Lived Here, Season 4: College Park, MD	WETA Arts	POV: The Body Politic (to 11:30pm)	
26 Tue	Finding Your Roots w/ Henry Louis Gates, Jr., Series 7 Encore: <i>Country Roots</i>		Lidia Celebrates America: Changemakers		Frontline: China, The U.S. & The Rise of Xi Jinping (to 12m)	
27 Wed	Nature: Woodpeckers: The Hole Story		NOVA: Building Stuff (Pt 3 of 3. <i>Change It!</i>)		Secrets of the Dead: Jamestown's Dark Winter	
28 Thur	Father Brown, Series 11 (Ep 4 of 10. <i>The Last Supper</i>)		Sister Boniface Mysteries, Series 3 (Ep 4 of 8. <i>A Fragrant Scandal</i>)		Professor T, Series 2 (Pt 4 of 6. <i>DNA of a Murderer</i>)	
29 Fri	Washington Week with <i>The Atlantic</i>	The David Rubenstein Show: Peer to Peer Conversations, Series 3	Great Performances: <i>Henry Mancini 100 at the Hollywood Bowl</i>			
30 Sat	(from 7:30pm) Henry Louis Gates, Jr. - <i>The Fabric of America</i>		Il Volo: The Valley of the Temples			Rick Steves' Europ. Christmas
	8:00	8:30	9:00	9:30	10:00	10:30

PBS News Hour airs weeknights at 7 p.m.
PBS News Weekend airs Sat./Sun. at 6 p.m.

Amanpour and Company airs late weeknights (check listings)

TV Listings

WETA PBS in November



Listings are accurate as of press time. For latest schedules, visit weta.org/schedule or call 703-998-2724.

WETA PBS is devoted to children's educational programming 8 a.m.-3 p.m., Monday-Friday. For 24 hours of children's programming each day, tune in to the WETA PBS Kids channel. See page 15 for information.

Program Key

Blue type – WETA productions, co-productions and presentations.

R – Repeat of recent programming.



COURTESY LAKESHORE PUBLIC MEDIA

Saturdays at 8 p.m. on WETA PBS

WETA Cinema Classics features films each Saturday night: *The General* (Nov. 2); *Godzilla* (Nov. 9); *One-Eyed Jacks* (Nov. 16), above, with Marlon Brando; and *To Kill a Mockingbird* (Nov. 23).

1 Friday

WEEKDAYS IN NOVEMBER:

6AM NHK NEWSLINE
6:30AM BBC NEWS
7AM (Mondays-) PBS NEWS WEEKEND
7AM (Tuesdays-Saturdays-) PBS NEWS HOUR – R
7:30 (Mon-) WASHINGTON WEEK WITH THE ATLANTIC – R
8AM-3PM WETA KIDS PROGRAMMING
5PM AMANPOUR AND COMPANY – Repeat of previous night
6PM BBC NEWS: THE COMPANY
6:30 BBC NEWS AMERICA
7:00 PBS NEWS HOUR – Each weeknight, the WETA production presents in-depth news reports and analysis of current events with a news summary, live studio interviews and discussions of domestic and international issues. Amna Nawaz and Geoff Bennett anchor. Visit pbs.org/newshour. **Repeats next day, 7am**

8:00 WASHINGTON WEEK WITH THE ATLANTIC – In WETA's weekly production, *The Atlantic* editor-in-chief Jeffrey Goldberg moderates a roundtable discussion with award-winning journalists who provide reporting and analysis of the major news stories from the nation's capital. Visit pbs.org/washingtonweek. **Repeats Sat 11/2, 6am, 6:30pm; Sun 11/3, 11:30am; Mon 11/4, 7:30am**

8:30 THE DAVID RUBENSTEIN SHOW: PEER TO PEER CONVERSATIONS, SEASON 3 – The renowned Washington, D.C.-based financier, author and philanthropist explores successful leadership through interviews with influential people. *Episode 11. Ken Griffin, Citadel Founder & CEO. R*

9:00 GREAT PERFORMANCES: LAND OF GOLD – Experience Peter Sellars' San Francisco Opera production of John Adams' *Girls of the Golden West*, set during the Gold Rush. Go behind the scenes with cast members Julia Bullock, J'Nai Bridges and others as they bring the show to life on stage.

10:30 AMERICAN ANTHEMS – A series celebrates the inspiring efforts of individuals. *Make Tomorrow Come Today*. Grammy nominee and diversity advocate Cam Ochs teams with songwriter Dre Williams to perform a stirring folk anthem for a woman who provides underserved children with books featuring diverse characters.

11:00 AMANPOUR AND COMPANY – **Repeats next weekday, 5pm**

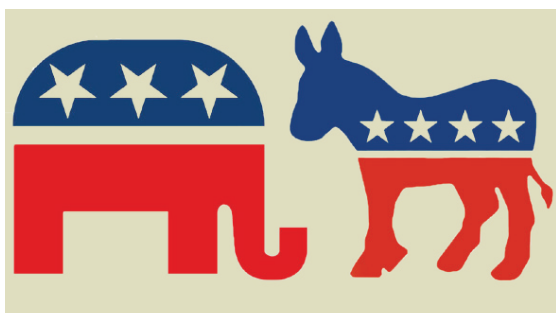
2 Saturday

6AM WASHINGTON WEEK WITH THE ATLANTIC – R
6:30 FIRING LINE WITH MARGARET HOOVER
7AM PBS NEWS HOUR – R
8AM JOURNEYS IN JAPAN
8:30 DINING WITH THE CHEF
9AM THIS OLD HOUSE + ASK THIS OLD HOUSE
10AM IT'S ACADEMIC – See 7 p.m.
10:30 MOTORWEEK
11AM AMERICA'S TEST KITCHEN FROM COOK'S ILLUSTRATED
11:30 KEVIN BELTON'S NEW ORLEANS CELEBRATIONS
12N IN JULIA'S KITCHEN WITH MASTER CHEFS
12:30 CHRISTOPHER KIMBALL'S MILK STREET TELEVISION
1:00 MILK STREET'S MY FAMILY RECIPE
1:30 LIDIA'S KITCHEN
2:00 NEW SCANDINAVIAN COOKING
2:30 SARA'S WEEKNIGHT MEALS
3:00 HOMEMADE LIVE
3:30 FRENCH MAGNOLIA COOKS
4:00 COOK'S COUNTRY FROM AMERICA'S TEST KITCHEN
4:30 AMERICA'S TEST KITCHEN FROM COOK'S ILLUSTRATED
5:00 PATI'S MEXICAN TABLE
5:30 SAMANTHA BROWN'S PLACES TO LOVE
6:00 PBS NEWS WEEKEND – John Yang anchors.
6:30 WASHINGTON WEEK WITH THE ATLANTIC – R
7:00 IT'S ACADEMIC – The long-running high school TV quiz show, now taped in WETA's television studio, showcases the academic achievements of D.C.-area students. Emmy Award-winning journalist Hillary Howard hosts. Competing this week are Osbourn Park; James W. Robinson, Jr.; and Meridian high schools. **Airs 10 a.m. Saturday, repeating 7 p.m. and Monday, 3 p.m. Stream on the PBS App and at YouTube.com/wetapbs.**
7:30 VARIETY STUDIO: ACTORS ON ACTORS, SERIES 19 – A series features candid conversations between contemporary star actors. *Episode 1. Cillian Murphy and Margot Robbie; Bradley Cooper and Emma Stone.*
8:00 WETA CINEMA CLASSICS: THE GENERAL – In Buster Keaton's 1926 silent comedy classic, a Confederate engineer strives to get his train "The General" back when it is captured by Union spies. Keaton directs and stars. **Repeats tonight**



LIONSGATE/COURTESY AMERICAN PUBLIC TELEVISION

Sundays at 7 p.m. starting Nov. 3 on WETA PBS & WETA Metro
 Ten-part drama *The First Lady* explores the personal and political lives of Betty Ford, Michelle Obama and Eleanor Roosevelt. (l-r:) Michelle Pfeiffer, Viola Davis and Gillian Anderson star.



PBS NEWS VOTE 2024: ELECTION COVERAGE
A WETA PRODUCTION

Tuesday, Nov. 5 starting at 7 p.m. on WETA PBS & WETA Metro
PBS News VOTE 2024: Election Coverage presents live coverage of the presidential, congressional and gubernatorial elections, featuring reporting and analysis of results into the night.

9:30 WETA CINEMA CLASSICS: THE GENERAL – R
11:00 FRONTLINE: AMERICAN VOICES 2024 – R
12M VOCES: OUR TEXAS, OUR VOTE – R

3 Sunday

6AM-9AM WETA KIDS PROGRAMMING
9AM WHITE HOUSE CHRONICLE
9:30 THIS IS AMERICA AND THE WORLD WITH DENNIS WHOLEY
10:00 DW EUROMAXX – LIFESTYLE EUROPE
10:30 MOTORWEEK
11:00 FIRING LINE WITH MARGARET HOOVER
11:30 WASHINGTON WEEK WITH THE ATLANTIC – R
12N FINDING YOUR ROOTS WITH HENRY LOUIS GATES, JR., SERIES 7 – Encore: The Shirts On Their Backs. R
1:00 FRONTLINE: THE CHOICE 2024: HARRIS VS. TRUMP –
 See Nov. 4, 10 p.m.
3:00 GERALDINE FERRARO: PAVING THE WAY – An inspiring film about the U.S. politician, diplomat and attorney's historic vice-presidential nomination presents the first full profile of the trailblazing woman who helped change the face of American politics. **Repeats Mon 11/4, 3:30pm; Sat 11/9, midnight**
4:30 NATIVE BALL: LEGACY OF A TRAILBLAZER – Each year in the U.S., nearly 5,000 high school girls' basketball players earn a full-ride Division I scholarship. In 1992, only one was Native American: Blackfeet Nation's Malia Kipp, who blazed a heroic and inspiring trail for other Native girls to follow. **Repeats Mon 11/11, 3:30pm**
5:00 PLAYING LIKE A GIRL: THE HOUSE THAT ROB BUILT – In an era when gender discrimination in sports was the norm, Coach Selvig built a "house" of inclusion and empowerment at the University of Montana by recruiting female athletes from ranches, farms, small towns and Native reservations – building a basketball powerhouse.
6:00 PBS NEWS WEEKEND – John Yang anchors. **Repeats Monday, 7am**
6:30 THE DAVID RUBENSTEIN SHOW: PEER TO PEER CONVERSATIONS, SEASON 3 – Episode 12. Jean Liu, President, Didi Chuxing. **Repeats Fri 11/8, 8:30pm**
7:00 THE FIRST LADY – A dramatic reframing of American leadership spotlights the viewpoint of the First Ladies, delving into their personal and political lives. Viola Davis stars as Michelle Obama, Michelle Pfeiffer portrays Betty Ford and Gillian Anderson is Eleanor Roosevelt. *Part 1 of 10. The White House.* Eleanor Roosevelt commits to Franklin's uncertain political future. Betty Ford unexpectedly becomes Second Lady. Michelle Obama wrestles with Barack's nomination. **Repeats tonight, midnight**
8:00 RIDLEY, SERIES 2 – *The Memory Jar, Part 2.* Following the shocking discovery of a body, Ridley intensifies his efforts to unravel what happened to the missing mother and wife. With Carol and the team, Ridley races against time to prevent further tragedies before it's too late. **Repeats 1am**
9:00 THE MARLOW MURDER CLUB ON MASTERPIECE – Samantha Bond stars. *Part 2 of 4.* Despite Tanika's warnings to stay out of the case, the trio follows a trail

of clues left by the murder weapon, uncovering new evidence that leads them to a chilling discovery – they have a serial killer on their hands.

10:00 WOLF HALL ON MASTERPIECE – Mark Rylance and Damian Lewis star. *Part 2 of 6.* Cardinal Wolsey has been forced to move to York. Cromwell remains in London, seeking to return the cardinal to the king's favor. As Cromwell's relationship with Henry deepens, there is unexpected news from the north.
11:00 SECRETS OF THE DEAD: FIELD OF VAMPIRES – R
12M THE FIRST LADY – *Part 1 of 10. The White House.* **R**

4 Monday

7:00 PBS NEWS HOUR – Weeknights. Visit pbs.org/newshour. **Repeats next day, 7am**
8:00 ANTIQUES ROADSHOW: CELEBRATING NATIVE AMERICAN HERITAGE – Celebrate incredible art and artifacts from Indigenous creators and history makers. **Repeats Wed 11/6, 3pm; Sat 11/9, 11pm**
9:00 IF YOU LIVED HERE, SEASON 4: CLEVELAND PARK, DC – In WETA's local house-hunting and neighborhood series, new hosts Jen Osborn and Ricardo Frederick Evans visit three homes in Washington D.C.'s Cleveland Park after meeting with realtor Christine Basso Fitzgerald at the Rosedale Conservancy. Along the way, the hosts reflect on the neighborhood's history as a booming suburb, and the role the Tregaron Conservancy – another public green space – continues to play in the community.
9:30 GET OUT OF TOWN, SEASON 2 – *Encore: Williamsburg, VA.* Mother-daughter hosts Laurita and Lauren Portee step into history and holidays at Colonial Williamsburg and ride the rollercoasters of Busch Gardens surrounded by 10 million lights.
10:00 FRONTLINE: THE CHOICE 2024: HARRIS VS. TRUMP – *Frontline* presents a journalistic investigation of the lives and characters of candidates Kamala Harris and Donald Trump as they seek the presidency. (2 hrs.) **Repeats Tue 11/5, 3pm**

5 Tuesday

6PM PBS NEWS HOUR
7PM PBS NEWS VOTE 2024: ELECTION COVERAGE – Follow PBS News live special coverage and results of the 2024 presidential, Senate, House and gubernatorial elections, with reporting from the PBS News team and expert guest analysis. See page 1 for details.

6 Wednesday

8:00 NATURE: SAN DIEGO: AMERICA'S WILDEST CITY – Experience the hidden wonders of San Diego, the country's most biodiverse urban landscape, where humans and wildlife intersect. This film showcases nature's resilience and beauty amidst the urban sprawl. **Repeats Thur 11/7, 3pm**



IF YOU LIVED HERE, SEASON 4
A WETA PRODUCTION

Mondays, Nov. 4, 11 & 25, 9 p.m. WETA PBS; 8 p.m. WETA Metro
WETA house-hunting series *If You Lived Here* presents three new Season 4 episodes, visiting Cleveland Park, DC; Occoquan/Lorton, VA; and College Park, MD. Above: Series hosts Ricardo and Jen.

LIZZIE ALBERS FOR WETA



Sundays, Nov. 10, 17 & 24 at 8 p.m. on WETA PBS & WETA Metro
Masterpiece reprises *Howards End*, an adaptation of E.M. Forster's novel following two sisters and the men in their lives. Above: Matthew Macfadyen and Hayley Atwell are among the cast.

9:00 NOVA: DECODING THE UNIVERSE: QUANTUM – When we look at the world at the tiniest scales, the subatomic realm, things get weird – very weird. Welcome to the quantum universe. Learn about discoveries in quantum mechanics that paved the way for today's digital technologies. **Repeats Thur 11/7, 4pm**

10:00 SECRETS OF THE DEAD: THE PRINCES IN THE TOWER – Find out if one of history's greatest cold cases – the imprisonment of two princes in the Tower of London – can be solved. Were the boys murdered by their infamous uncle King Richard III for the throne? Or was it a conspiracy to hide the truth? **Repeats Fri 11/8, 4pm; Sun 11/10, 11pm**

7 Thursday

8:00 FATHER BROWN, SERIES 11 – The BBC drama presents more mysteries featuring the charismatic clergyman sleuth. Mark Williams stars. *Episode 1 of 10. The Kemplston Olympics*. It's now 1955 and Father Brown investigates when rivalries escalate to murderous heights at an inter-village competition. Meanwhile, Chief Inspector Sullivan and Mrs. Devine have grown closer since we saw them last.

9:00 SISTER BONIFACE MYSTERIES, SERIES 3 – Lorna Watson returns as the Vespa-driving, forensics-loving Cotswolds nun who cracks local murder mysteries. *Episode 1 of 8. Never Too Deadly to Die*. Sister Boniface and team probe the planting of a deadly scorpion that leaves one of the cast dead during the filming of a crime drama.

10:00 PROFESSOR T, SERIES 2 – In the drama, troubled Cambridge criminologist Professor Jasper Tempest (Ben Miller) unravels knotty crimes. *Part 1 of 6. Ring of Fire*. A young woman is left badly burned after a fire in a student apartment. When investigations show the victim was drugged and the fire was set, Professor T aids the police in their hunt for the perpetrator.

8 Friday

8:00 WASHINGTON WEEK WITH THE ATLANTIC – Visit pbs.org/washingtonweek. **Repeats Sat 11/9, 6am, 6:30pm; Sun 11/10, 11:30am; Mon 11/11, 7:30am**

8:30 THE DAVID RUBENSTEIN SHOW: PEER TO PEER CONVERSATIONS, SEASON 3 – *Episode 12. Jean Liu, President, Didi Chuxing*. **R**

9:00 SALUTE TO SERVICE: A VETERANS DAY CELEBRATION – Join country music star Mickey Guyton for a Veterans Day celebration honoring our nation's heroes with inspiring military stories – and performances by Craig Morgan, Christian McBride, Aubrey Logan, and the U.S. Army Field Band. **Repeats tonight; Mon 11/11, 4pm**

10:00 SALUTE TO SERVICE: A VETERANS DAY CELEBRATION – (encore) **R**

9 Saturday

6AM–6PM See the Saturday, November 2 listings.

6:00 PBS NEWS WEEKEND – John Yang anchors.

6:30 WASHINGTON WEEK WITH THE ATLANTIC – **R**

7:00 IT'S ACADEMIC – The long-running high school TV quiz show, now taped in WETA's television studio, showcases the academic achievements of D.C.-area students. Journalist Hillary Howard hosts. Competing this week are Bethesda-Chevy Chase, Benjamin Banneker Academic, and DeMatha Catholic high schools. **Airs 10 a.m. Saturday, repeating 7 p.m. and Monday, 3 p.m. Stream on the PBS App and at YouTube.com/wetapbs.**

7:30 VARIETY STUDIO: ACTORS ON ACTORS, SERIES 19 – *Episode 2. Robert Downey Jr. and Mark Ruffalo; Colman Domingo and Jacob Elordi.*

8:00 WETA CINEMA CLASSICS: GODZILLA: KING OF THE MONSTERS! – In the 1956 (American version) film, an American reporter (Raymond Burr) investigates a series of mysterious disasters off the coast of Japan. Soon he witnesses a giant lizard monster, fueled by nuclear testing, attacking Tokyo. **Repeats tonight**

9:30 WETA CINEMA CLASSICS: GODZILLA: KING OF THE MONSTERS! – **R**

11:00 ANTIQUES ROADSHOW: CELEBRATING NATIVE AMERICAN HERITAGE – **R**

12M GERALDINE FERRARO: PAVING THE WAY – (90 min.) **R**

10 Sunday

6AM–12N See the Sunday, November 3 listings.

12N THE EYES OF THE WORLD: FROM D-DAY TO VE DAY – Join historian John Monsky, host Katie Couric, conductor Keith Lockhart and the Boston Pops for a Veterans Day tribute from Boston's Symphony Hall. Broadway stars join Monsky and the orchestra on stage to tell the dramatic story of World War II's final months in Europe through a stirring mix of music and personal stories.

2:00 DAD'S SECRET WAR: FRANCE 1944 – Narrated by actor Kevin Bacon, a documentary illuminates two top-secret World War II organizations – the American OSS (Office of Strategic Services) and the British SOE (Special Operations Executive) – and shares the story of an American who joined the SOE and was parachuted into France with a small team just after D-Day to help organize the French Resistance.

3:00 FEAST YOUR EARS: THE STORY OF WHFS 102.3 – A documentary spotlights the progressive radio station that was a keystone countercultural voice in the nation's capital and focal point for the music of the 1960s-'80s. Hear from renowned musicians, 'HFS deejays, record label veterans, journalists, historians, fans and others as they reflect on the station, the music, and the social, cultural and political upheaval of its era.

4:35 ANACOSTIA DELTA: THE LEGACY OF D.C.'S TELEMAS-TERS – In September 2015 at the Birchmere Music Hall, 30 of the Washington, D.C. music universe's finest artists gathered to pay homage to their heroes and display the virtuosic, genre-blending music they call their own. This film celebrates guitar masters such as the late Danny Gatton (of Anacostia) and Roy Buchanan, and other local heroes.



JESSE LARWICK FOR WIT FILMS ARCHIVE

Monday, Nov. 11, 10 p.m. WETA PBS; Nov. 16, 8:30 p.m. WETA Metro
 Airing as part of WETA's programming marking Veterans Day, *Independent Lens: Make Peace or Die: Honor the Fallen* follows a Marine veteran who connects with Gold Star families.



Tuesday, Nov. 12 at 9 p.m. on WETA PBS & WETA Metro
History series *American Experience* presents *American Coup: Wilmington 1898*, the story of a race massacre and coup d'état in North Carolina against a multi-racial city government.

- 6:02 PBS NEWS WEEKEND** – John Yang anchors. **Repeats Monday, 7am**
- 6:30 THE DAVID RUBENSTEIN SHOW: PEER TO PEER CONVERSATIONS, SEASON 3** – Episode 13. Steve Ballmer, *LA Clippers Owner* and former *Microsoft CEO*. **Repeats Fri 11/15, 8:30pm**
- 7:00 THE FIRST LADY** – Viola Davis, Michelle Pfeiffer and Gillian Anderson star. *Part 2 of 10. Voices Carry.* Eleanor presses Franklin to act more boldly against the Great Depression. After Nixon's resignation, Betty becomes First Lady days before a state dinner. Before Barack's inauguration, Michelle faces opposition from his transition team. **Repeats tonight, midnight**
- 8:00 HOWARDS END ON MASTERPIECE** – Follow two independent and unconventional sisters and the men in their lives as they seek love and meaning in this Kenneth Lonergan adaptation of E.M. Forster's masterpiece. The ensemble cast includes Hayley Atwell, Matthew Macfadyen, Tracey Ullman and Julia Ormond. *Part 1 of 4.* A passionate misunderstanding, a surprise visit and a stolen umbrella set into motion a series of events that unexpectedly intertwine the lives of three families. **Repeats 1am**
- 9:00 THE MARLOW MURDER CLUB ON MASTERPIECE** – *Part 3 of 4.* As the police race against time, Tanika recruits the trio as civilian advisors to help catch the killer. The police make a breakthrough on crime scene evidence – have they found the killer?
- 10:00 WOLF HALL ON MASTERPIECE** – *Part 3 of 6.* With the cardinal dead, it falls to Cromwell to orchestrate a marriage between Henry and Anne Boleyn. The king rewards Cromwell for his loyalty, but he is being closely watched by his enemies.
- 11:00 SECRETS OF THE DEAD: PRINCES IN THE TOWER – R**
- 12M THE FIRST LADY** – *Part 2 of 10. Voices Carry. R*

11 Monday

- 7:00 PBS NEWS HOUR** – Visit pbs.org/newshour. **Repeats next day, 7am**
- 8:00 ANTIQUES ROADSHOW: EXTRAORDINARY FINDS 3** – *Antiques Roadshow* reveals what happened with some intriguing treasures through new interviews with fan-favorite appraisers and standout guests. **Repeats Tue 11/12, 4pm**
- 9:00 IF YOU LIVED HERE, SEASON 4: OCCOQUAN/LORTON, VA** – In WETA's local house-hunting series, after meeting realtor Theo Daubresse along the Occoquan River, hosts Jen Osborn and Ricardo Frederick Evans tour homes in Occoquan and Lorton, VA. The hosts learn about the history of the community's very first automated mill, its Artists' Undertaking Gallery, and its renovated Workhouse Arts Center. **Repeats Tue 11/12, 3pm; Mon 11/18, 3:30pm**
- 9:30 WETA ARTS** – WETA's local arts and culture series spotlights the USAF Honor Guard Drill Team, visits immersive art museum ARTECHOUSE for an exhibition on the bioluminescent ocean realm, and meets Helen Chason, director of the Kreeger Museum, for a guided tour of its iconic artworks. **Repeats Tue 11/12, 3:30pm; Sun 11/17, 5:30pm; Sun 11/24, 1pm; Mon 11/25, 9:30pm; Tue 11/26, 3:30pm**

- 10:00 INDEPENDENT LENS: MAKE PEACE OR DIE: HONOR THE FALLEN** – Riddled with survivor's guilt, Marine veteran Anthony Marquez makes it his mission to reconnect with the Gold Star families of the fallen. By carving and hand-delivering a battlefield cross for each, he finds the path to heal himself. (90 min.)

12 Tuesday

- 8:00 FINDING YOUR ROOTS WITH HENRY LOUIS GATES, JR., SERIES 7** – In this WETA co-production, join Harvard scholar Henry Louis Gates, Jr., as he delves into the genealogy of famous Americans. *Encore: Write My Name in the Book of Life.* Gates helps Pharrell Williams and Kasi Lemmons discover their enslaved ancestors. **Repeats Sun 11/17, noon**
- 9:00 AMERICAN EXPERIENCE: AMERICAN COUP: WILMINGTON 1898** – Discover the story of the deadly 1898 race massacre and coup d'état in Wilmington, North Carolina, when white supremacists overthrew the multi-racial government of the state's largest city through a campaign of violence and intimidation. (2 hrs.) **Repeats Wed 11/13, 3pm; Sat 11/16, 1am; Sun 11/17, 1pm**

13 Wednesday

- 8:00 NATURE: LIONS OF THE SKELETON COAST** – Follow lion researcher Dr. Philip Stander and three orphaned desert lion cubs as they navigate the harsh realities of survival in one of the world's most unforgiving places on the coast of Namibia. **Repeats Thur 11/14, 3pm**
- 9:00 NOVA: BUILDING STUFF** – Engineering is all around us, and we humans have been doing it forever. But how does it work? Watch some of the most creative folks in the game design, build, and test their way through challenges. *Part 1 of 3. Boost It!* Around the world, engineers find ingenious ways to amplify our abilities and senses – allowing us to access and shape the world beyond our natural abilities. **Repeats Thur 11/14, 4pm**
- 10:00 SECRETS OF THE DEAD: LOST TREASURES OF ANGKOR – THE DISCOVERY** – A recent discovery of gold and silver artifacts in Laos tells the story of the Khmer Empire and may point to a lost city of immense power and wealth older than the megacity of Angkor. **Repeats Fri 11/15, 4pm; Sun 11/17, 11:03pm**

14 Thursday

- 8:00 FATHER BROWN, SERIES 11** – *Episode 2 of 10. The Forensic Nun.* Father Brown investigates when his friend Sister Boniface is implicated in a renowned artist's murder.
- 9:00 SISTER BONIFACE MYSTERIES, SERIES 3** – *Episode 2 of 8. House of Misfit Dolls.* The team tries to uncover the truth behind the stabbing of a business owner.
- 10:00 PROFESSOR T, SERIES 2** – *Part 2 of 6. The Mask Murders.* When a prominent couple is found murdered, the crime scene has uncanny parallels to another murder 15 years before. Is the crime a copycat killing or was the wrong man prosecuted?



Wednesdays, Nov. 13 & 20 at 10 p.m. on WETA PBS & WETA Metro
Two-part miniseries *Secrets of the Dead: Lost Treasures of Angkor* spotlights a recent discovery of gold and silver artifacts in Laos that sheds new light on the ancient Khmer Empire.

15 Friday

- 8:00 WASHINGTON WEEK WITH THE ATLANTIC** – Visit pbs.org/washingtonweek. Repeats Sat 11/16, 6am, 6:30pm; Sun 11/17, 11:30am; Mon 11/18, 7:30am
- 8:30 THE DAVID RUBENSTEIN SHOW: PEER TO PEER CONVERSATIONS, SEASON 3** – Episode 13. Steve Ballmer, LA Clippers Owner and former Microsoft CEO. **R**
- 9:00 GREAT PERFORMANCES: RODGERS & HAMMERSTEIN'S 80TH ANNIVERSARY: MY FAVORITE THINGS** – Explore the vast repertoire of musical theater pioneers Richard Rodgers and Oscar Hammerstein II in a star-studded concert featuring Aaron Tveit, Patrick Wilson and others, who perform songs from shows *Carousel*, *South Pacific*, *The King and I*, *The Sound of Music* and more. (2 hrs.)

16 Saturday

6AM-6PM See the Saturday, November 2 listings.

- 6:00 PBS NEWS WEEKEND** – John Yang anchors.
- 6:30 WASHINGTON WEEK WITH THE ATLANTIC** – **R**
- 7:00 IT'S ACADEMIC** – The long-running high school TV quiz show, now taped in WETA's television studio, showcases the academic achievements of D.C.-area students. Journalist Hillary Howard hosts. Competing this week are Springbrook, Park View, and Landon high schools. **Airs 10 a.m. Saturday, repeating 7 p.m. and Monday, 3 p.m. Stream on the PBS App and at [YouTube.com/wetapbs](https://www.youtube.com/wetapbs).**
- 7:30 VARIETY STUDIO: ACTORS ON ACTORS, SERIES 19** – Episode 3. Michael Fassbender with Carey Mulligan; Greta Lee with Andrew Scott; and Halle Bailey with Rachel Zegler.
- 8:00 WETA CINEMA CLASSICS: ONE-EYED JACKS** – In the 1961 western, Marlon Brando's only directorial credit, the actor stars as Rio, a bank robber on the run after being double-crossed by his partner in Mexico. Five years later, he tracks down his former collaborator (Karl Malden), now a sheriff in California. **Repeats tonight**
- 10:30 WETA CINEMA CLASSICS: ONE-EYED JACKS** – **R**
- 1AM AMERICAN EXPERIENCE: AMERICAN COUP: WILMINGTON 1898** – **R**

17 Sunday

6AM-12N See the Sunday, November 3 listings.

- 12N FINDING YOUR ROOTS WITH HENRY LOUIS GATES, JR., SERIES 7** – Encore: *Write My Name in the Book of Life*. **R**
- 1:00 AMERICAN EXPERIENCE: AMERICAN COUP: WILMINGTON 1898** – **R**
- 3:00 THE ELECTRIC INDIAN** – Learn about Henry Boucha, a celebrated National Hockey League Player, U.S. Olympic Silver Medalist, United States Hockey Hall of Fame member, and proud Ojibwa Native American. His



LEONARDO DA VINCI, STUDY OF A COYTIER CHARIOT, C. 1485. MIC-MUSEI REALI, BIBLIOTECAREALI, PHOTO: FERNANDO ORCOTTE

LEONARDO DA VINCI A FLORENTINE FILMS & WETA PRODUCTION

Mon-Tues, Nov. 18-19 at 8 p.m. on WETA PBS & WETA Metro
Leonardo da Vinci, a Florentine Films & WETA production directed by Ken Burns, Sarah Burns and David McMahon, explores the life and work of the 15th-century Renaissance Italy polymath.



ANGUS YOUNG/WETA ATLANTIC PRODUCTIONS

Wednesday, Nov. 20 at 8 p.m. on WETA PBS & WETA Metro

Nature: Attenborough's Life Journey presents an intimate portrait of Sir David Attenborough's life and career, from boyhood fossil-hunter to revered status as the foremost natural history presenter.

story is one of struggle, tragedy and triumph. **Repeats Mon 11/18, 4pm**

- 4:00 INDEPENDENT LENS: ONE WITH THE WHALE** – An Alaska Native family maintains a subsistence life in which if you don't hunt, you die. But when a teenager becomes the youngest person ever to harpoon a whale for his village, his family is blindsided by activists brutally attacking him online.
- 5:30 WETA ARTS** – **R**
- 6:00 PBS NEWS WEEKEND** – John Yang anchors. **Repeats Monday, 7am**
- 6:30 THE DAVID RUBENSTEIN SHOW: PEER TO PEER CONVERSATIONS, SEASON 3** – Episode 14. Marc Benioff, Salesforce Founder, Chairman, and Co-CEO. **Repeats Fri 11/22, 8:30pm**
- 7:00 THE FIRST LADY** – Part 3 of 10. *Please Allow Me*. Young Eleanor attends her coming out party in New York where she meets cousin Franklin. In Michigan, young Betty is courted by hotshot lawyer Jerry. At a Chicago law firm, young Michelle meets summer intern Barack, interested in politics. **Repeats tonight, midnight**
- 8:00 HOWARDS END ON MASTERPIECE** – Part 2 of 4. Mrs. Wilcox surprises her family with a final request regarding *Howards End*. The Schlegels face eviction from their house. The Schlegel sisters take up the cause of Jacky Bast's husband. **Repeats 1am**
- 9:00 THE MARLOW MURDER CLUB ON MASTERPIECE** – Part 4 of 4. Judith makes a breakthrough and sets up a trap for the killer, but plans go awry. Becks and Suzie must follow their instincts and convince Tanika that Judith is in danger – will they make it in time to save their friend and stop the killer?
- 10:00 WOLF HALL ON MASTERPIECE** – Part 4 of 6. Anne gives birth to a baby girl, failing to produce Henry's longed-for male heir. Cromwell demands the nobility and church swear an oath acknowledging Anne as lawful queen. Will Thomas More agree?
- 11:03 SECRETS OF THE DEAD: LOST TREASURES OF ANGKOR – THE DISCOVERY** – **R**
- 12M THE FIRST LADY** – Part 3 of 10. *Please Allow Me*. **R**

18 Monday

- 7:00 PBS NEWS HOUR** – Weeknights. Visit pbs.org/newshour. **Repeats next day, 7am**
- 8:00 LEONARDO DA VINCI** – A new Florentine Films and WETA production directed by Ken Burns, Sarah Burns and David McMahon, spotlights the 15th-century polymath of soaring imagination who created some of history's most revered works of art. Through his paintings and expansive writings, *Leonardo da Vinci* explores one of humankind's most curious and innovative minds. *Part 1 of 2. The Disciple of Experience*. Leonardo apprentices as an artist and craftsman in Florence, where the Renaissance is in full bloom. He shows extraordinary talent but struggles to finish commissions. Later, in Milan, he paints a monumental fresco of the Last Supper. **Repeats tonight; Tue 11/19, 3pm; Sun 11/24, 2pm**
- 10:00 LEONARDO DA VINCI** – Part 1 of 2. *The Disciple of Experience*. **R**

19 Tuesday

8:00 LEONARDO DA VINCI – The new production from Florentine Films and WETA continues. *Part 2 of 2. Painter-God.* Leonardo designs fanciful flying machines, studies light and shadow, investigates gravity, dissects cadavers, and pours the sum of his scientific and artistic knowledge into a portrait that would become the most famous painting on earth. **Repeats tonight; Wed 11/20, 3pm; Sun 11/24, 4pm**

10:00 LEONARDO DA VINCI – *Part 2 of 2. Painter-God. R*

20 Wednesday

8:00 NATURE: ATTENBOROUGH'S LIFE JOURNEY – Celebrate Sir David Attenborough's 98th year via unique high-lights of his incredible life and explorations, from his boyhood days as a fossil hunter, through his early days as a BBC host, to his revered status as the foremost natural history presenter. **Repeats Thur 11/21, 3pm; Sun 11/24, noon**

9:00 NOVA: BUILDING STUFF – *Part 2 of 3. Reach It!* From the time our species first evolved, we've been on the move, scheming and inventing and building our way from one place to the next. See how today's engineers are designing and constructing creative new ways for us to get around – and even off – our planet. **Repeats Thur 11/21, 4pm**

10:00 SECRETS OF THE DEAD: LOST TREASURES OF ANGKOR – KING'S GOLD – The discovery of gold and silver artifacts in Laos leads to ancient sites of worship from the early days of the Khmer Empire. **Repeats Fri 11/22, 4pm; Sun 11/24, 11:04pm**

21 Thursday

8:00 FATHER BROWN, SERIES 11 – *Episode 3 of 10. The Hermit of Hazelnut Cottage.* Brenda faces ghosts from her past and is embroiled in a local dispute that ends in murder.

9:00 SISTER BONIFACE MYSTERIES, SERIES 3 – *Episode 3 of 8. Professor Y.* A fan convention for a classic sci-fi series sees the writer being taken hostage.

10:00 PROFESSOR T, SERIES 2 – *Part 3 of 6. The Family.* Professor T is asked to decipher a macabre puzzle when a doctor and her family are found dead in a grisly tableau on their living room sofa, each having died by different means.

22 Friday

8:00 WASHINGTON WEEK WITH THE ATLANTIC – Visit pbs.org/washingtonweek. **Repeats Sat 11/23, 6am, 6:30pm; Sun 11/24, 11:30am; Mon 11/25, 7:30am**

8:30 THE DAVID RUBENSTEIN SHOW: PEER TO PEER CONVERSATIONS, SEASON 3 – *Episode 14.* Marc Benioff, Salesforce Founder, Chairman, and Co-CEO. **R**

9:00 GREAT PERFORMANCES: PATSY CLINE: WALKIN' AFTER MIDNIGHT – Experience the songs of the country music icon in a star-studded tribute concert from Nashville's Ryman Auditorium, featuring Wynonna, Beverly D'Angelo, Pat Benatar & Neil Giraldo, Kristin Chenoweth, Rita Wilson, Ashley McBryde and many other luminaries. **Repeats Mon 11/25, 3:30pm**

10:30 AMERICAN ANTHEMS – A series celebrates the inspiring efforts of individuals. *Life Is Sweet.* Grammy-winner Jennifer Nettles surprises a cancer foundation founder with an anthem about his life. **Repeats Sat 11/23, 1am**

23 Saturday

6AM-6PM See the Saturday, November 2 listings.

6:00 PBS NEWS WEEKEND – John Yang anchors.

6:30 WASHINGTON WEEK WITH THE ATLANTIC – **R**

7:00 IT'S ACADEMIC – The long-running high school TV quiz show, now taped in WETA's television studio, showcases the academic achievements of D.C.-area students. Journalist Hillary Howard hosts. Competing this week are St. Paul VI Catholic, Woodgrove, and West Springfield high schools. **Airs 10 a.m. Saturday, repeating 7 p.m. and Monday, 3 p.m. Stream on the PBS App and at YouTube.com/wetapbs.**

7:30 VARIETY STUDIO: ACTORS ON ACTORS, SERIES 19 – *Episode 4.* Emily Blunt and Anne Hathaway; Taraji P.

Henson and Jeffrey Wright; Paul Mescal and Natalie Portman.

8:00 WETA CINEMA CLASSICS: TO KILL A MOCKINGBIRD – In Robert Mulligan's 1962 adaptation of Harper Lee's Pulitzer Prize-winning novel, set in 1930's Alabama, a young girl (Mary Badham) recounts how her widowed father (Gregory Peck), while educating his children against prejudice, defended a Black man charged with sexually assaulting a white woman. Nominated for eight Academy Awards, the film won three, including Best Actor for Peck. **Repeats tonight**

10:30 WETA CINEMA CLASSICS: TO KILL A MOCKINGBIRD – **R**
1AM AMERICAN ANTHEMS – *Life Is Sweet. R*

24 Sunday

6AM-12N See the Sunday, November 3 listings.

12N NATURE: ATTENBOROUGH'S LIFE JOURNEY – **R**

1:00 WETA ARTS – **R**

1:30 FLORENCE: THE ART OF MAGNIFICENCE – Florence, Italy was the cradle of the Renaissance and the birthplace of the modern world. From Dante to Leonardo da Vinci to Michelangelo, this central Italian town produced the greatest concentration of artistic genius in history. Learn Florence's story through its art, architecture and history.

2:00 LEONARDO DA VINCI – *Part 1 of 2. The Disciple of Experience. R*

4:00 LEONARDO DA VINCI – *Part 2 of 2. Painter-God. R*

6:00 PBS NEWS WEEKEND – John Yang anchors. **Repeats Monday, 7am**

6:30 THE DAVID RUBENSTEIN SHOW: PEER TO PEER CONVERSATIONS, SEASON 3 – *Episode 15.* Jeff Bezos, Founder & CEO of Amazon.com, Inc. **Repeats Fri 11/29, 8:30pm**

7:00 THE FIRST LADY – *Part 4 of 10. Cracked Pot.* Franklin's marital indiscretions push Eleanor to socialize with more political women. A stubborn shoulder injury begins Betty's troubled history with pain medication. Michelle vows to take Chicago's inadequate healthcare system to task. **Repeats tonight, midnight**

8:00 HOWARDS END ON MASTERPIECE – *Part 3 of 4.* Margaret receives an unexpected offer from Henry. Helen is incensed by the unfair fate of the Bastos. The three families collide at a wedding, and Henry's past is revealed. **Repeats 1am**

9:00 HOWARDS END ON MASTERPIECE – *Part 4 of 4.* Margaret is undaunted by Henry's past misdeeds. Helen leaves abruptly for Europe. Margaret and Tibby get Henry to help resolve issues at Howards End, where the three families have a showdown. **Repeats 2am**

10:00 WOLF HALL ON MASTERPIECE – *Part 5 of 6.* Anne is pregnant again and away from court; and Henry takes notice of Jane Seymour. Anne hears of this and threatens Cromwell to make terms with her before her son is born. Has she overplayed her cards?

11:04 SECRETS OF THE DEAD: LOST TREASURES OF ANGKOR – KING'S GOLD – **R**

12M THE FIRST LADY – *Part 4 of 10. Cracked Pot. R*



Thursday, Nov. 28, 8 a.m.-5 p.m. on WETA PBS & WETA Metro
The marathon "Thanksgiving with Julia," hosted by Seth Tillman of WETA production *Signature Dish*, presents episodes of iconic chef Julia Child's popular early public television series *The French Chef*. Above: Child with WETA's first president, Elizabeth Campbell.

Statement of Ownership, Management and Circulation (Required by 39 U.S.C. 3685)

1. Publication Title: WETA (magazine). 2. Publication Number 008-057. 3. Filing Date: 09/30/2024. 4. Issue Frequency: Monthly. 5. Number of Issues Published Annually, 12. 6. Annual subscription \$3. 7. Mailing Address of Known Office of Publication: 3939 Campbell Avenue, Arlington, Virginia, 22206-3440. 8. Mailing Address of Location of Headquarters of Publisher: 3939 Campbell Avenue, Arlington, Virginia, 22206-3440. 9. Publisher Address: Mary Stewart, 3939 Campbell Avenue, Arlington, Virginia, 22206-3440; Editor Address: Jeff Giese; 3939 Campbell Avenue, Arlington, Virginia, 22206-3440. 10. Owner: Greater Washington Educational Telecommunications Association; 3939 Campbell Avenue, Arlington, Virginia, 22206-3440. 11. Known Bond-Holders, Mortgagees and Other Security Holders Owning or Holding 1 percent or more of Total Amount of Bonds, Mortgages or Other Securities: None. 12. Tax Status: The purpose, function and nonprofit status of this organization and the exempt status for Federal Income tax purposes has not changed during the preceding 12 months. 13. Publication Title: WETA (magazine). 14. Issue Date for Circulation Data Below: 10/01/2024. 15. Extent and Nature of Circulation. 15A. Total No. Copies Printed (Net Press Run): Average No. Copies Each Issue During Preceding 12 Months, 147,371. Single Issue Nearest Filing Date, 147,137. 15B. Paid Circulation: 1. Mailed Outside-County Paid Subscriptions Stated on PS Form 3541: Average No. Copies Each Issue During Preceding 12 Months, 120,072. Single Issue Nearest to Filing Date, 119,513. 2. Mailed In-County Paid Subscriptions Stated on PS Form 3541: Average No. Copies Each Issue During Preceding 12 months, 25,963. Single Issue Nearest to Filing Date, 25,778. 3. Paid Distribution Outside the Mails Including Sales Through Dealers and Carriers, Street Vendors and Counter Sales and Other Paid Distribution Outside USPS: Average No. Copies Each Issue During Preceding 12 months, 0. Single Issue Nearest to Filing Date, 0. 4. Paid Distribution by Other Classes of Mail through the USPS: Average No. Copies Each Issue During Preceding 12 months, 0. Single Issue Nearest to Filing Date, 0. 15C. Total Paid Distribution: Average No. Copies Each Issue During Preceding 12 Months, 146,035. Single Issue Nearest to Filing Date, 145,291. 15D. Free or Nominal Rate Distribution: 1. Free or Nominal Rate Outside-County Copies Included on PS Form 3541: Average No. Copies Each Issue During Preceding 12 Months, 363. Single Issue Nearest to Filing Date, 368. 2. Free or Nominal Rate In-County Copies Included on PS Form 3541: Average No. Copies Each Issue During Preceding 12 months, 52. Single Issue Nearest to Filing Date, 53. 3. Free or Nominal Rate Copies Mailed at Other Classes Through the USPS: Average No. Copies Each Issue During Preceding 12 months, 54. Single Issue Nearest to Filing Date, 34. 4. Free or Nominal Rate Distribution Outside the Mail: Average No. Copies Each Issue During Preceding 12 months, 278. Single Issue Nearest to Filing Date, 666. 15E. Total Free or Nominal Rate Distribution (Sum of D1-D4): Average No. Copies Each Issue During Preceding 12 Months, 747. Single Issue Nearest to Filing Date, 1,121. 15F. Total Distribution (Sum of C and E): Average No. Copies Each Issue During Preceding 12 Months, 146,782. Single Issue Nearest to Filing Date, 146,412. 15G. Copies Not Distributed (Office Use, Left Over, Unaccounted, Spoiled After Printing): Average No. Copies Each Issue During Preceding 12 Months, 589. Single Issue Nearest to Filing Date, 725. 15H. Total (Sum of F and G): Average No. Copies Each Issue During Preceding 12 Months, 147,371. Single Issue Nearest to Filing Date, 147,137. 15I. Percent Paid and/or Requested Print Circulation: Average During Preceding 12 Months: 99.49%. Single Issue Nearest to Filing Date: 99.23%. 16. Electronic Copy Circulation. 16A. Paid Electronic Copies: Average No. Copies Each Issue During Preceding 12 Months, 1,230. Single Issue Nearest to Filing Date, 1,264. 16B. Total Paid Print Copies + Paid Electronic Copies: Average No. Copies Each Issue During Preceding 12 Months, 147,265. Single Issue Nearest to Filing Date, 146,555. 16C. Total Print Distribution + Paid Electronic Copies: Average No. Copies Each Issue During Preceding 12 Months, 148,012. Single Issue Nearest to Filing Date, 147,676. 16D. Percent Paid (Both Print & Electronic Copies): Average During Preceding 12 Months: 99.49%. Single Issue Nearest to Filing Date: 99.24%. Be it certified that at least 50% of all distributed copies (electronic and print) are paid above a nominal price. I certify that the statements made by me above are correct and complete. Jeff Giese, Editor. 09/30/2024.

WETA Magazine is published monthly by the Greater Washington Educational Telecommunications Association for its members. Three dollars of each member's dues are designated for its subscription. WETA occasionally exchanges member names with other organizations. If you wish that your name not be exchanged, please call Audience Services at 703-998-2724. ©2024 by Greater Washington Educational Telecommunications Association. All rights reserved. No part of this magazine may be reproduced in any form without written permission. Periodical postage paid at Arlington, VA 22210 and additional offices. Send address changes to WETA, 3939 Campbell Avenue, Arlington, Virginia 22206. Volume 37, Number 11. ISSN No. 1041-2700.

PRINTED ON RECYCLED PAPER



Publisher Mary Stewart
Editor Jeff Giese
Design MANIFEST LLC
Editorial and Advertising Offices
3939 Campbell Ave.
Arlington, VA 22206

25 Monday

- 7:00 PBS NEWS HOUR**—Weeknights. Visit pbs.org/newshour. [Repeats next day, 7am](#)
- 8:00 ANTIQUES ROADSHOW: OUT OF THIS WORLD**—Discover space-themed treasures, including NASA memorabilia and more. [Repeats Tue 11/26, 4pm](#)
- 9:00 IF YOU LIVED HERE, SEASON 4: COLLEGE PARK, MD**—Accompanied by realtor Don Bunuan, hosts Jen and Ricardo visit properties in the home of the University of Maryland. They explore the rich history of the neighborhood and make stops at Hornbake Library and the College Park Aviation Museum. [Repeats Tue 11/26, 3pm](#)
- 9:30 WETA ARTS**—See the Nov. 11, 9:30 p.m. listing. **R**
- 10:00 POV: THE BODY POLITIC**—A documentary finds hope in a country plagued by gun violence. Follow Mayor Brandon Scott's first year in office as he fights political forces to save lives in Baltimore and reveal a path to healing for the nation. (90 min.)

26 Tuesday

- 8:00 FINDING YOUR ROOTS WITH HENRY LOUIS GATES, JR., SERIES 7**—In this WETA co-production, join Harvard scholar Henry Louis Gates, Jr., as he delves into the genealogy of famous Americans. *Encore: Country Roots*. Gates explores the ancestry of country music icons Clint Black and Rosanne Cash. [Repeats Wed 11/27, 3pm](#)
- 9:00 LIDIA CELEBRATES AMERICA: CHANGEMAKERS**—Follow beloved chef Lidia Bastianich across America as she meets chefs, farmers, and entrepreneurs who are hard at work trying to change not only what is available, but the way Americans see and think about food in the future. [Repeats Wed 11/27, 4pm](#)
- 10:00 FRONTLINE: CHINA, THE U.S. & THE RISE OF XI JINPING**—*Frontline* spotlights the rise of Xi Jinping, his vision for China and the global implications. Correspondent Martin Smith traces the defining moments for the Chinese leader, how he's exercising power, and the impact on China and relations with the U.S. and the world. (2 hrs.)

27 Wednesday

- 8:00 NATURE: WOODPECKERS: THE HOLE STORY**—Get an intimate look at what makes woodpeckers so special. Explore their evolutionary journey and the powerful role they play in every ecosystem except Antarctica and Australia. Paul Giamatti narrates.
- 9:00 NOVA: BUILDING STUFF**—*Part 3 of 3. Change It!* For as long as humans have been around, we've been altering the spaces around us to better suit our needs. See how today's engineers are applying their craft to reshape the natural world and create new human-made environments to enhance our lives in amazing ways.
- 10:00 SECRETS OF THE DEAD: JAMESTOWN'S DARK WINTER**—Follow forensic anthropologists as they excavate the early American colony and uncover dark secrets. What do an English girl's bones reveal about what happened during the winter of 1609?

28 Thursday

- 8AM-5PM THANKSGIVING WITH JULIA**—Tune in for a marathon of programs spotlighting iconic public television chef Julia Child: episodes of her original series *The French Chef*. Seth Tillman, of WETA local restaurant production *Signature Dish*, hosts.
- 8:00 FATHER BROWN, SERIES 11**—*Episode 4 of 10. The Last Supper*. Father Brown has a lot on his plate when a food faire comes to Kembleford, bringing murder with it.

- 9:00 SISTER BONIFACE MYSTERIES, SERIES 3** – *Episode 4 of 8. A Fragrant Scandal.* The owner of a perfume company is slain and Sister Boniface investigates.
- 10:00 PROFESSOR T, SERIES 2** – *Part 4 of 6. DNA of a Murderer.* An artisan baker is found dead after receiving death threats. Is it a case of revenge or is the killer closer to home? Professor T helps the police with the case.

29 Friday

- 8AM WETA CINEMA CLASSICS MARATHON** – *To Kill a Mockingbird* (8am); *One-Eyed Jacks* (10:30am); *Charade* (1pm); and *Touch of Evil* (3-5pm)
- 8PM WASHINGTON WEEK WITH THE ATLANTIC** – Visit pbs.org/washingtonweek. **Repeats Sat 11/30, 6am, 6:30pm; Mon 12/2, 7:30am**
- 8:30 THE DAVID RUBENSTEIN SHOW: PEER TO PEER CONVERSATIONS, SEASON 3** – *Episode 15. Jeff Bezos, Founder & CEO of Amazon.com, Inc. R*
- 9:00 GREAT PERFORMANCES: HENRY MANCINI 100 AT THE HOLLYWOOD BOWL** – Celebrate the centennial birthday of composer Henry Mancini with Michael Bublé, Cynthia Erivo, saxophonist Dave Koz, Monica Mancini and host Jeff Goldblum, featuring Mancini's signature songs and clips from his beloved movies and TV shows. **Repeats Sat 11/30, noon**

30 Saturday

- 6AM-8AM See the Saturday, November 2 listings.**
- 8AM RICK STEVES' EUROPEAN CHRISTMAS** – See tonight, 10:30 p.m.
- 10AM IT'S ACADEMIC** – See 7 p.m.
- 10:30AM MARY BERRY'S ULTIMATE CHRISTMAS** – Join the beloved British home cook and special friends as they prepare her ultimate Christmas feast with all the trimmings, from the traditional turkey to her classic Christmas pudding.
- 12N GREAT PERFORMANCES: HENRY MANCINI 100 AT THE HOLLYWOOD BOWL – R**
- 2:00 BEHIND THE SCENES OF LEONARDO DA VINCI WITH KEN BURNS** – Learn about the making of the new WETA and Florentine Films production about the work of the 15th-century polymath Leonard da Vinci. Directors Ken Burns, Sarah Burns and David McMahon reveal the challenges of telling this 500-year-old story.
- 3:30 AMERICA'S TEST KITCHEN FROM COOKS ILLUSTRATED**
- 4:30 AMERICA'S TEST KITCHEN CELEBRATES 25 YEARS** – Celebrating the 25th anniversary of the popular cooking show, Bridget Lancaster, Julia Collin Davison and the test cooks highlight the food, science, kitchen ingenuity and fun that have made the series a fan favorite.
- 6:00 PBS NEWS WEEKEND** – John Yang anchors.
- 6:30 WASHINGTON WEEK WITH THE ATLANTIC – R**
- 7:00 IT'S ACADEMIC** – The long-running high school TV quiz show, now taped in WETA's television studio, showcases the academic achievements of D.C.-area students. Journalist Hillary Howard hosts. Competing this week are KIPP DC College Preparatory, Independence, and Wheaton high schools. **Airs 10 a.m. Saturday, repeating 7 p.m. and Monday, 3 p.m. Stream on the PBS App and at YouTube.com/wetapbs.**
- 7:30 HENRY LOUIS GATES, JR. – THE FABRIC OF AMERICA** – Celebrating the 10th anniversary of WETA co-production *Finding Your Roots with Henry Louis Gates, Jr.* and the 25th anniversary of the first PBS documentary produced by the renowned cultural historian, this new retrospective program explores Gates's scholarly works over the past five years and the historic events and cultural reckoning on racial injustice that took place in the nation. **Repeats tonight**
- 9:00 IL VOLO: THE VALLEY OF THE TEMPLES** – Acclaimed Italian vocal trio Il Volo presents a performance at the ancient Temple of Concordia in Sicily's spectacular Valley of the Temples. A celebration of Italian culture and history, the concert showcases beloved Italian classics, operatic arias and popular songs.
- 10:30 RICK STEVES' EUROPEAN CHRISTMAS** – Join the travel expert for a colorful celebration of Christmas across Europe – in England, Wales, France, Norway, Germany, Austria, Switzerland and Italy. Enjoy Christmas markets, hear local choirs, share holiday traditions with families, and more.
- 12:30AM HENRY LOUIS GATES, JR. – THE FABRIC OF AMERICA – R**

Via Antenna 26.3
Comcast 266/1147
Cox 801
Fios 472
RCN 38

WETA

**PBS
KIDS**

The WETA PBS Kids channel offers a safe haven for young viewers, presenting educational programming 24 hours each day, seven days a week.

WEEKDAYS ON WETA PBS KIDS

- Clifford the Big Red Dog, 6am
- Sesame Street, 6:30am
- Pinkalicious & Peterrific, 7am
- Mecha Builders, 7:30am
- Sesame Street, 8am
- Milo, 8:30am
- Work It Out Wombats!, 9am, 9:30am
- Daniel Tiger's Neighborhood, 10am, 10:30am
- Curious George, 11am, 11:30am (Carl the Collector starts Nov. 14 at 11am)
- Donkey Hodie, 12n, 12:30pm
- Elinor Wonders Why, 1pm
- Rosie's Rules, 1:30pm, 2pm
- Xavier Riddle and the Secret Museum, 2:30pm
- Alma's Way, 3pm, 3:30pm
- Lyla in the Loop, 4pm
- Arthur, 4:30pm
- Odd Squad, 5pm, 5:30pm
- Wild Kratts, 6pm, 6:30pm
- Lyla in the Loop, 7pm
- Nature Cat, 7:30pm
- Molly of Denali, 8pm
- Hero Elementary, 8:30pm
- Cyberchase, 9pm
- Let's Go Luna! 9:30pm
- Rosie's Rules, 10pm
- Xavier Riddle and the Secret Museum, 10:30pm

Visit weta.org/schedule for complete WETA PBS Kids listings.

WEEKDAYS ON WETA PBS, 8 AM – 3 PM

- Lyla in the Loop, 8am
- Wild Kratts, 8:30am (Carl the Collector starts Nov. 14)
- Daniel Tiger's Neighborhood, 9am
- Rosie's Rules, 9:30am
- Sesame Street, 10am
- Work It Out Wombats!, 10:30am
- Donkey Hodie, 11am
- Pinkalicious & Peterrific, 11:30am
- Elinor Wonders Why, 12n
- Nature Cat, 12:30pm
- Molly of Denali, 1pm
- Xavier Riddle and the Secret Museum, 1:30pm
- Wild Kratts, 2pm
- Alma's Way, 2:30pm

SUNDAYS ON WETA PBS, 6 AM – 9 AM

- Mister Rogers' Neighborhood, 6am
- Arthur, 6:30am
- Wild Kratts, 7am
- Alma's Way, 7:30am
- Lyla in the Loop, 8am
- Wild Kratts, 8:30am (Carl the Collector starts Nov. 17)

British Television at Its Best

The WETA UK channel is devoted to the best in British television programming, presenting beloved classics and contemporary series around the clock, seven days a week. WETA UK offers a full schedule of fine entertainment programming – featuring drama, mystery and comedy – in addition to documentary series and news reports.

NOVEMBER P.M. PROGRAMMING ON WETA UK

VISIT WETA.ORG/SCHEDULE FOR A PROGRAM LINEUP

	SUNDAY	MONDAY	TUESDAY	WEDNESDAY	THURSDAY	FRIDAY	SATURDAY
12pm	• noon, 11/3-11/10: Moonflower Murders on Masterpiece	Call the Midwife, Series 10; Series 11 starts 11/11 (12:30pm on 11/20); Series 12 starts 11/21					• Osborne House (11/9)
12:30pm	• noon, 11/17: L. Worsley's Royal Palace Secrets						• Highclere: Behind the Scenes (starts 11/16)
1pm	• noon, starting 11/24: Sister Boniface Mysteries, Series 3	Hotel Portofino, Series 2 starts 11/5; Series 3 starts 11/13 (skips 11/20); Mr. Bates vs The Post Office starts 11/25					• Shakespeare & Hathaway, Series 4
1:30pm					Mr. Bean Marathon, 11/28, 11am-3pm		• Sister Boniface Mysteries, Series 3 (starts 11/23)
2pm	• 1pm, 11/3: L. Worsley's Royal Palace Secrets	The Good Karma Hospital, Series 2	• Shakespeare & Hathaway, Series 4	Luisa Spagnoli: Queen of Chocolate (starts 11/6)	• Osborne House (11/7)	• The Good Karma Hospital, Series 2	• Miss Fisher's Murder Mysteries, Series 2 & 3
2:30pm	• 1pm, 11/10: Osborne House		• Sister Boniface Mysteries, Series 3 (starts 11/19)		• Highclere: Behind the Scenes (starts 11/14)	• Marlow Murder Club (starts 11/29)	
3pm	• 1pm, 11/17: QE II: In Their Own Words	Doc Martin, Series 10 (starts 11/4)	Miss Fisher's Murder Mysteries, Series 2 & 3	Luna & Sophie, Series 3	• Moonflower Murders on Masterpiece	Doc Martin, Series 10 (starts 11/1)	• Nolly on Masterpiece (starts 11/2)
3:30pm	• 1pm, starting 11/24: Marlow Murder Club on Masterpiece				• The Real Crown: Inside the House of Windsor (starts 11/14)		• Funny Woman (starts 11/23)
4pm	• 2-5pm: 11/3-11/24: Annika, Series 1 & 2 on Masterpiece	• The Indian Doctor, Series 3	• Nolly on Masterpiece	The Paris Murders, Series 1	• Father Brown, Series 9 [11/28, 3-7pm: Vicar of Dibley Christmas Specials]	• The Indian Doctor, Series 3	• The Indian Doctor, Series 3
4:30pm		• World on Fire, Series 1 (starts 11/18)	• Funny Woman (starts 11/19)			• World on Fire, Series 1 (starts 11/15)	• World on Fire, Series 1 (starts 11/16)
5pm	• Endeavour, Series 9 on Masterpiece	BBC News: The Context	BBC News: The Context	BBC News: The Context	BBC News: The Context	BBC News: The Context	• Endeavour, Series 9 on Masterpiece
5:30pm	• Foyle's War, Series 1 (starts 11/10)	BBC News America	BBC News America	BBC News America	BBC News America	BBC News America	• Foyle's War, Series 1 (starts 11/9)
6pm		Still Open All Hours	Still Open All Hours	Still Open All Hours	Still Open All Hours	Still Open All Hours	
6:30pm		As Time Goes By	As Time Goes By	As Time Goes By	As Time Goes By	BBC Antiques Roadshow	
7pm	• Magpie Murders (starts just before 7pm) Wolf Hall on Masterpiece (begins 11/10)	Celebrity Antiques Road Trip	Celebrity Antiques Road Trip	Celebrity Antiques Road Trip	• Celebrity Antiques Road Trip [11/28, 7pm: All Creatures Great and Small: Tricki and Friends]	Celebrity Antiques Road Trip	• Magpie Murders on Masterpiece
7:30pm							• Wolf Hall on Masterpiece (starts before the hour, beginning 11/9)
8pm	The Good Karma Hospital, Series 2	• Shakespeare & Hathaway, Series 4	Foreign Favourites	• Osborne House (11/6)	• The Good Karma Hospital, Series 2 [11/28, 8:30pm: Sister Boniface Christmas Special]	Masterworks Showcase	• 8-11pm: 11/2-11/23: Annika, Series 1 & 2 on Masterpiece
8:30pm		• Sister Boniface Mysteries, Series 1 (starts 11/18)	• 8pm: Luna & Sophie, Series 3	• Highclere: Behind the Scenes (starts 11/13)		• 8pm, 11/1: Endeavour, Series 9 on Masterpiece	• 8-12m, 11/30: Marriage
9pm	• 9pm, 11/3: L. Worsley's Royal Palace Secrets	• Miss Fisher's Murder Mysteries, Series 2 (Series 3 starts 11/11)	• 9pm: The Paris Murders, Series 1	• Moonflower Murders on Masterpiece	Doc Martin, Series 10 [Rick Steves European Christmas, 11/28, 10:30pm]	• 8pm, starting 11/8: Foyle's War, Series 1	• 11pm, 11/2-11/16: Shakespeare & Hathaway, Series 4
9:30pm	• 9pm, 11/10: Osborne House		• 10pm: Nina, Series 1	• The Real Crown: Inside the House of Windsor (starts 11/13)		• 10pm, 11/1: Magpie Murders on Masterpiece	• 11pm, 11/23: Voices Over the Water
10pm	• 9pm-12m, 11/17: The Boleyns: A Scandalous Family	• Nolly on Masterpiece		Father Brown, Series 9	• The Indian Doctor, Series 3	• 10pm: starts before the hour, 11/8-11/24: Wolf Hall on Masterpiece	
10:30pm	• 9pm-12m, 11/24: Little Women on Masterpiece	• Funny Woman (starts 11/18)			• World on Fire on Masterpiece, Series 1 (starts 11/14)		
11pm	• 10pm, 11/3-11/10: The Indian Doctor, Series 3	BBC News	BBC News	BBC News	BBC News	BBC News	
11:30pm	• 11pm, 11/3-11/10: Still Open All Hours	[See 8pm]	[See 8pm]	[See 8pm]	[See 8pm]	[See 8pm]	
	SUNDAY	MONDAY	TUESDAY	WEDNESDAY	THURSDAY	FRIDAY	SATURDAY

WETA UK Highlights

Highclere: Behind the Scenes

Wednesdays at 8 p.m. starting Nov. 13
on WETA UK

The inhabitants of the fictional Downton Abbey are known and loved all around the world through the popular television series of the same name, but how do their real-life counterparts live today in the actual manor? The five-part miniseries *Highclere: Behind the Scenes* follows the highs and lows of the current Lord and Lady Carnarvon and their loyal staff, offering access to Highclere Castle as they come out of three years of closures due to the pandemic. To keep the family-owned estate running, they adopt a busy calendar of events, including a charity gala, the annual Country Show and Battle Proms, and Easter and Christmas celebrations.



COURTESY AMERICAN PUBLIC TELEVISION

“Weekends with Nicola”

Saturdays at 8 p.m. starting Nov. 2
on WETA UK

On weekends throughout November, WETA UK presents two popular series featuring British actor Nicola Walker (right, with Jamie Sives). Known to viewers for her roles in *MI-5*, *Last Tango in Halifax*, *River* and other dramas, Walker appears in her recent starring role in *Annika, Series 1 & 2* on *Masterpiece* (Nov. 2 & 9, 8-11 p.m. and Nov. 16 & 23, 8-11 p.m.). In the contemporary police drama, she portrays veteran detective Annika Strandhed, the dry-witted skipper of Glasgow’s newly formed Marine Homicide Unit — and single mother to a rebellious teenage daughter. Walker also appears this month with Sean Bean in the series *Marriage* (Nov. 30, 8 p.m.-midnight), which chronicles the ups and downs of a long relationship.



©UKTV

Osborne House: A Royal Retreat

Wed, Nov. 6 at 8 p.m. on WETA UK

English Heritage granted a production crew unprecedented access to Queen Victoria’s favorite home, Osborne House, offering an up-close and personal glimpse into the private refuge where she and her husband Prince Albert came to escape the pressures of royal life, raised a family — and where Victoria ultimately passed away. More than a holiday home, it was also a testbed of innovation and a seat of power from which the Queen and her prince presided over the largest empire in human history. The program explores the house, gardens and surroundings, with special access to the home’s interior — and features interviews with staff.



HUMAC6/CC BY/ATTRIB SHARE ALINE 3.0 UNPORTED

Also this month: Mystery drama *Foyle’s War* returns to Friday nights on Nov. 8, airing each week at 8 p.m.; and *Sister Boniface Mysteries, Series 3* airs Mondays at 8 p.m. starting Nov. 18 (also airing Thursdays on WETA PBS).

WETA Metro is the streaming and broadcast television channel that features popular PBS programming and engaging content curated for our local audience, including offerings spotlighting the Metro D.C. community. The channel is simulcast with WETA PBS most evenings. Each day on WETA Metro, enjoy local programs, news and public affairs offerings (such as *PBS News Hour*, weekdays at 6 p.m./11 p.m.), and lifestyle and cultural shows.

VISIT [WETA.ORG/SCHEDULE](https://weta.org/schedule) FOR A COMPLETE PROGRAM LINEUP

Stream at weta.org/livestream or via the PBS app



JEROME STEPHENS

Anacostia Delta: The Legacy of DC's Telemasters

**Thursday, Nov. 14 at 9:30 p.m. on WETA Metro
(Nov. 10, 4:30 p.m. on WETA PBS)**

In September 2015 at the Birchmere Music Hall, 30 of D.C.'s finest musicians gathered to celebrate their heroes and display the virtuosic, genre-blending music they call their own. At center stage stood a Fender Telecaster, the signature instrument of the late Danny Gatton (left). As the master of this

music, Gatton blended jazz, blues, country, swing, rock and bluegrass — sometimes in the same solo. He grew up in D.C.'s Anacostia neighborhood, which gave its name to this musical culture: "Anacostia Delta." This program, part concert, part documentary, traces the development of that scene and celebrates Gatton and other local heroes. For more on the area's music scene, watch *The Bayou: DC's Killer Joint*, Nov. 9 at 8 p.m. on WETA Metro.



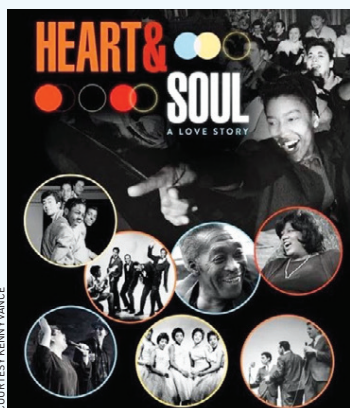
CRAIG MELLISH, SEPT. 2019

The American Buffalo

**Thursdays, Nov. 21 & 28 at 8 p.m.
on WETA Metro**

Reprised during Native American Heritage Month, Ken Burns's two-part 2023 film — a WETA co-production — spotlights the near decimation and ultimate return of the U.S. national mammal, and the species' connection to Indigenous communities and the land. The program presents a biography of the iconic animal through North American history and

across some of the continent's most iconic landscapes. The stories of Native people anchor the series, which includes interviews with leading Native American scholars, land experts and Tribal Nation members. To learn more about the film, visit pbs.org/americanbuffalo.



COURTESY KENNY VANCE

Heart & Soul: A Love Story

Saturday, Nov. 23 at 8 p.m. on WETA Metro

An acclaimed documentary presents an intimate journey to the heart and soul of Doo-Wop, the 1950s music that was the bridge to rock 'n' roll. Featuring the iconic music and original footage of the teenaged artists who have almost become lost to history, director/singer/musician Kenny Vance, co-founder of the hit 1960s group Jay & The Americans and multi-music Hall of Fame inductee, shares footage and origin stories of the genre's forgotten founders — his friends and colleagues — who sang harmony and changed the course of popular culture.

The WETA World channel is a 24/7 news and public affairs service devoted to fact-based nonfiction programming, sharing broad perspectives, stories and ideas. WETA World informs and educates, presenting award-winning documentaries and domestic and international news broadcasts. The channel features a slate of original programs that examine issues with a diversity of voices and illuminate conflicts, movements and cultures around the globe.

VISIT WETA.ORG/SCHEDULE FOR A COMPLETE PROGRAM LINEUP

Stream WETA World at weta.org or via the PBS app

Native America, Series 1 & 2

Saturdays, Nov. 2-23 at 8 p.m. on WETA World

An eight-part documentary series airs in celebration of National Native American Heritage Month, in Season 1 bringing to life the world created by First Peoples — and in Season 2 offering a portrait of contemporary Indian Country. Episodes air in double features. Series 1 spotlights massive cities connected by social networks spanning two continents, with sophisticated systems of science, art and writing. Series 2 explores core tenets of Native heritage: the power of Indigenous design, how language and artistry fuel the soul, the diverse ways that Native women lead, and the resilience of the warrior spirit.



Comanche tribal members, Lawton, Oklahoma

Local, USA: Salmon People + Firelighters

Mondays, Nov. 4 & 18 at 8 p.m. on WETA World

Two films in the documentary series *Local, USA* spotlight Indigenous people in North America. ***Scha'nexw Elbtal'nexw (Salmon People): Preserving a Way of Life*** (Nov. 4), follows Lummi families fishing for sockeye in the Pacific Northwest, exploring the deep connection between the tribe and the salmon — and the values of respect, gratitude and sharing being passed to the next generation. ***Firelighters: Fire Is Medicine*** (Nov. 18), examines how for centuries, landscapes in North America were shaped by lightning strikes and by Indigenous peoples using fire. The film follows women Yurok and Karuk tribe members resourcing Indigenous practices and aiming to take back traditional burning rights.



Dad's Secret War: France 1944

Saturday, Nov. 9 at 6 p.m. on WETA World

Airing among WETA World's programming surrounding Veterans Day, the film *Dad's Secret War: France 1944* spotlights two top-secret World War II organizations — the OSS (Office of Strategic Services) and the SOE (Special Operations Executive), American and British services responsible for highly classified missions of critical importance to defeating the Nazis. The documentary shares the true story of an American who joined the SOE and parachuted into France with a small team just after D-Day to organize the French Resistance. Kevin Bacon narrates. The film also airs Nov. 10 at 2 p.m. on WETA PBS.





JUDAN MARCUS/KENNEDY CENTER ARCHIVES

Mstislav Rostropovich, former NSO music director

Tchaikovsky, Mozart & Barber on November's NSO Showcase

Wednesday, November 6 at 9 p.m.

WETA Classical program *NSO Showcase* is back for a new season starting the day after the election, so first on offer from the National Symphony Orchestra is a quintessentially American piece, Samuel Barber's *Knoxville: Summer of 1915*, featuring South African soprano Masabane Cecilia Rangwanasha. Next on the bill is a performance of Mozart's *Piano Concerto No. 24*, featuring guest soloist Nikolai Lugansky and with Manfred Honeck conducting.

Rounding out the program is the headliner, a 1990 Sony recording of former NSO music director Mstislav Rostropovich's triumphant return to Moscow, leading Tchaikovsky's *Symphony No. 6*, "Pathétique." Tune in Nov. 6, or stream the program, available all month at wetaclassical.org.



EDMUND LEIGHTON, COLLECTION OF FRED & SHERRY ROSS, PUBLIC DOMAIN

**The Charity of St Elizabeth of Hungary
by Edmund Leighton, 1895**

Four Oratorios on Choral Showcase

Sundays in November at 9 p.m.

In November, WETA Classical's weekly Sunday, 9 p.m. program *Choral Showcase* presents four oratorios, each spotlighting an individual's life. On November 3, Craig Hella Johnson's *Considering Matthew Shepard* tells the story of a young gay man whose brutal 1998 murder became a defining moment in the LGBTQ+ civil rights movement. Then, two compositions honor women whose lives of holiness and virtue made them founding figures in their country's histories: Antonín Dvořák's *Saint Ludmila* (of the Czechs) on November 10; and Franz Liszt's *The Legend of Saint Elizabeth* (of Hungary) on November 17. Last, on November 24, is Handel's *Theodora*, which recounts the bravery of a Christian martyr in fourth-century Rome.



COURTESY THE ARTIST

Jaram Kim

Violin Virtuosity on Front Row Washington

Monday, November 18 at 9 p.m.

This month on the Monday local concert program *Front Row Washington* — showcasing world-class artists in performances at venues around Greater Washington — tune in for a Classical Arts Society of Washington presentation of the programme "Virtuoso Violinist: Nuptial Offers of César Franck," featuring heart-touching music from the 19th century. Alongside pianist Christopher Schmitt, award-winning violinist Jaram Kim gives an evocative performance of Franck's *Sonata in A Major for*

Violin and Piano, composed as a wedding present for violin virtuoso Eugène Ysaÿe. Kim and Schmitt also perform works by Ysaÿe himself — and by Beethoven, including his *Sonata for Violin and Piano No. 5 Op.24*, "Spring."

Classical for Washington

Vote in WETA Classical's 2024 Countdown

Voting starts November 11 at wetaclassical.org

By Jim Allison, Program Director, WETA Classical & WETA VivaLaVoce

Will there be surprises in this November's voting? I'm referring to our annual popular Classical Countdown, in which WETA Classical listeners cast their ballot for their all-time favorite pieces. The classical poll is open at wetaclassical.org November 11-17, and per tradition, we will count down the top 100 choices November 25-28, playing the pieces on the air until the number one selection is revealed at 8 p.m. on Thanksgiving Day.

Don't expect many surprises. Aside from the occasional upset thanks to clever voting campaigns by local music students, the basic makeup of the top 100 pieces is remarkably consistent year to year. This is particularly true in the top ten. Familiar titles like *Scheherazade* and *The Four Seasons* are usually just behind the perennial winners of the top slot — either Beethoven's or Dvořák's Ninth Symphony.

These truly are the most beloved favorites of classical music, and they make a particularly enjoyable playlist for Thanksgiving week. However, they're not the *only* favorites. Astute listeners will note how relatively few works before Beethoven are in the Top 100. Only a handful of compositions by Mozart and Bach. And no Haydn! Most selections that make the list have distinctive, recognizable monikers, which distinctly disadvantages baroque and classical works that have generic and sometimes cumbersome titles.

Take Vivaldi, for example. You might hear Linda Carducci play a particularly lively Vivaldi concerto for our weekday morning feature Classical Sunrise. You might even like it more than his *Spring* concerto, but it's difficult to recall its name: *Concerto in D Major, RV 93*.

Or Haydn. Which of the 104 options is the symphony with that catchy tune that Bill Bukowski played at lunchtime?

And what about that favorite Mozart tune Nicole Lacroix played on your drive home? Was it from *Piano Concerto No. 21* or *19*? Or maybe *23*? Or was it *9*?

Perhaps this is the year when some of these overshadowed favorites show up on the Classical Countdown. And maybe some of the wonderful compositions by Florence Price and Dora Pejačević will move up in the rankings. Thanks to newly available recordings, WETA Classical listeners are hearing their music more regularly on air.

With hundreds of years of classical music to choose from, assembling any list of favorites can be challenging. The Classical Countdown might not be the definitive gauge of what's popular, but it's an instructive snapshot of what our listeners value. We hope you enjoy this year's results during Thanksgiving week and hear some of your favorites along the way.



**Beethoven topped
last year's Classical
Countdown:
who will be the
winner this year?**



In this season of
the Combined
Federal Campaign,
support WETA via

CFC
99581



ADVERTISEMENT

**TICKETS
AVAILABLE
NOW!**

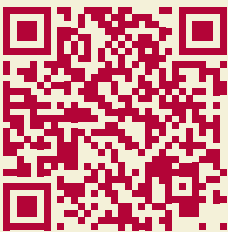
A Christmas Carol



Nov 21-Dec 31, 2024

By Charles Dickens; Adapted by Michael Wilson;
Directed by Michael Baron

Season Sponsors: Chevron and Lockheed Martin Corporation
Lead Sponsor: HII Mission Technologies
Sponsors: The Home Depot and National Retail Federation



www.fords.org | (888)616-0270

Kimberly Gilbert in *A Christmas Carol* (2023). Photo by Scott Suchman.