

WETA



JUNE 2024
MAGAZINE FOR MEMBERS

WETA Rocks Summer Concert Series features premier artists

Saturday nights on WETA PBS
Tune in, or stream with WETA Passport

WETA Focus



As the summer season begins, WETA programming will entertain, inspire and inform you. Enjoy new episodes of ongoing dramas, including *Grantchester*; and return to beloved classics such as *Foyle's War*. Revel in the *WETA Rocks Summer Concert Series*, a showcase of vibrant performances by premier musical artists. And engage with new miniseries *Hope in the Water* and *Dynamic Planet* to learn about sustainable harvesting from the seas and how we can adapt to climate change. June is also Pride Month, and we present a broad slate of programs across our channels exploring the LGBTQ+ community's lived experience and more. Among related offerings is the intriguing new series *Disco: Soundtrack of a Revolution*, which explores how the music was bound up with liberation movements of the 1970s, including LGBTQ+ identity.

In other programming, stay informed with WETA public affairs programs; tune in or stream *Washington Week with The Atlantic*, *PBS NewsHour* and *PBS News Weekend*.

I am honored to share that *PBS NewsHour* in May won a coveted Peabody Award for the series of news reports and a primetime special titled "War in the Holy Land," spotlighting the Israel-Hamas War. Congratulations to the NewsHour team on this recognition of excellence in journalism. The awards committee wrote that the reports "showed compassion and a sophisticated understanding of the politics of the region" and presented "the most divisive international story of our time with immediacy, fairness, and vital context."

Enjoy our June programming, and thank you for your ongoing support.

Sharon Percy Rockefeller

Sharon Percy Rockefeller

President and Chief Executive Officer, WETA

Summer Learning Fun from WETA Learning Media

StartwithaBook.org

features activities for families

Given all the buzz about the rare double-brood periodical cicada event, this summer is a great time to explore bugs with kids with help from **StartwithaBook.org**, the companion website to WETA's award-winning literacy initiative **ReadingRockets.org**. Investigate all things insect with Start with a Book's **Bug Buddies**, a resource for a DIY summer camp with recommended books, videos, apps, and hands-on activities to guide kids' exploration of insects and their role in our ecosystems and our lives. Designed for families and summer learning programs, the online toolkit can also be adapted and used anywhere with kids aged 6-12. Among other Start with a Book adventures, try flying high with **Bird Buddies**, launching into space exploration with **Space Rangers**, plunging into local waterways with **River Rangers**, or taking the weather by storm with **Weather Wonders**. For bite-sized activity ideas, Start with a Book also offers Reading Tips to Go, a summer text message service. To find additional resource-rich WETA educational websites, visit weta.org/learningmedia.

Start with a Book is made possible with generous support from Park Foundation.



**Looking for summer reading
and learning ideas?**

Visit Start with a Book!
www.startwithabook.org



WETA – ON THE AIR & ONLINE

WETA PBS

26.1 via antenna
Comcast 26, 219, 800, 1026
Cox 26, 1003, 1026
DirecTV 26, 26-1, Stream
Dish 8076 Fios 26, 526
RCN 26, 613
YouTube.com/wetapbs

WETA UK

26.2 via antenna
Comcast 265, 1146
Cox 800
Fios 474
RCN 39, 602

WETA Metro

26.5 via antenna
weta.org/livestream
PBS App Cox 802
YouTube TV
Hulu + Live TV
Comcast 270, 1148
Fios 470 RCN 599

WETA World

26.4 via antenna
Fios 475
RCN 37
Stream at weta.org

COVER: GETTY IMAGES;
BRUCE SPRINGSTEEN
& KEITH RICHARDS

New Drama Seasons Start Sunday, June 16

**On WETA PBS & WETA Metro; stream on the PBS App;
binge-watch with WETA Passport as of the broadcast premieres**

Professor T, Series 3 (8 p.m.)

The popular British crime series starring Ben Miller, Frances de la Tour and Juliet Stevenson returns with six new episodes. Season 3 of the drama opens with the brilliant, deeply troubled University of Cambridge criminologist Professor Jasper Tempest in jail awaiting trial. Contending with obsessive-compulsive disorder, he is not a typical inmate and the sights, sounds and smells of jail are difficult for him. As Professor T struggles to get his old life and job back, he is aided by Detective Sergeant Dan Winters (Barney White) and Detective Inspector Lisa Donckers (Emma Naomi), who distract him from his situation by soliciting his genius insight to help solve some tricky crimes.



SOURCE: SENSE8/AGLEEVE DRAMA

Grantchester, Series 9 on Masterpiece (9 p.m.)

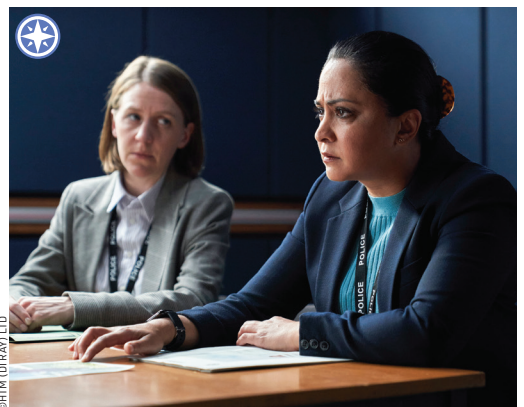
In a new 8-episode season of mystery series *Grantchester*, it's 1961 and life in the Cambridgeshire village is good for vicar William Davenport (Tom Brittney) and police detective Geordie Keating (Robson Green). Their two families are always together, and with honorary grandparents Mrs. C and Jack, and adopted uncles Daniel and Leonard, they have a happy circle. Then Will is approached with a life-changing offer. As Geordie struggles with loss, he makes a new acquaintance — charismatic Reverend Alphy Kotteram (Rishi Nair). After a rocky introduction, the two men discover they have a lot in common and begin to collaborate.



KUDDUS, ITV & MASTERPIECE

DI Ray, Series 2 (10 p.m.)

Parminder Nagra returns as Birmingham police Detective Inspector Rachita Ray, who two months after a suspension is thrust back into homicide probes. In a new investigation, the fatal shootings of an innocent nurse and the head of a notorious crime family point to brewing tensions between rival crime groups. In the six new episodes of Series 2, as she works the high-profile case, Ray continues to contend with prejudice while also trying to prevent the city from erupting into an all-out turf war. The crime drama co-stars Gemma Whelan (*Game of Thrones*; *The Tower*) and Jamie Bamber (*Law and Order: UK*).



© HTM (D) RAY LTD

For program and membership inquiries, visit weta.org or call 703-998-2724.

WETA PBS Kids

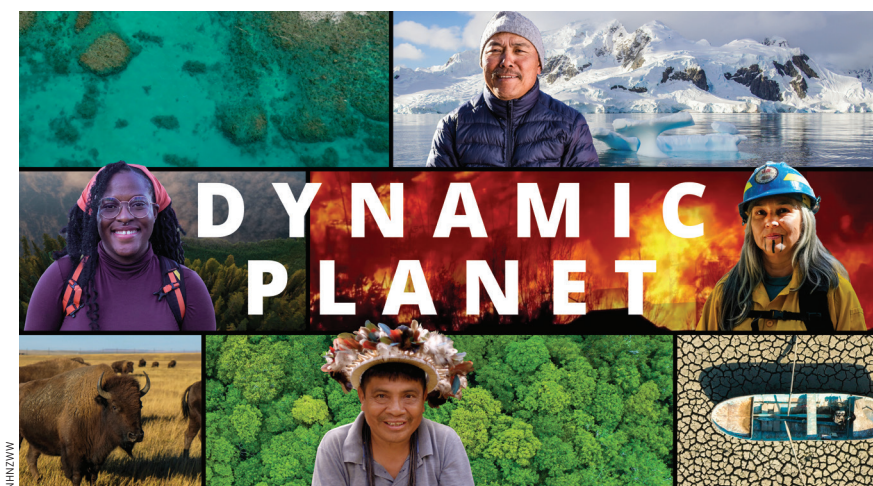
26.3 via antenna
Comcast 266, 1147
Cox 801
Fios 472
RCN 38

WETA Online

weta.org
weta.org/passport
weta.org/pbsapp
weta.org/learningmedia

WETA Classical

WETA 90.9 FM Washington, D.C.
WGMS 89.1 FM Hagerstown
wetaclassical.org
vivalavoce.org
WETA Classical App



**Series airs Wednesdays at 8 p.m., June 19-July 10
on WETA PBS & WETA Metro; stream on the PBS App**

A monumental new four-part miniseries travels to the most extreme places on all seven continents to explore the lives of extraordinary people and animals on the front lines of climate change. Highlighting what is under threat but also how the natural world is adapting in surprising ways, *Dynamic Planet* reveals how science, nature, and traditional knowledge can prepare humanity for the future. As it contextualizes the global scale of climate instability and change, the series features dazzling cinematography of wildlife in Earth's most remote regions.

- **Episode 1: *Ice* (June 19)** — As the planet warms up, the ice at all three poles — the Arctic, Antarctic, and the Himalayas — is melting rapidly, bringing significant consequences.
- **Episode 2: *Fire* (June 26)** — With global temperatures on the rise and ecosystems destabilizing, people on the front line of change are working to find answers.
- **Episode 3: *Water* (July 3)** — With the world warming, oceans are changing, with far-reaching ramifications for the life they contain and the people who rely upon them.
- **Episode 4: *Earth* (July 10)** — With the world's ecosystems in turmoil, how can we prepare for a rapidly evolving future?

Hope in the Water

**9 p.m. Wednesdays, June 19-July 3
on WETA PBS & WETA Metro;
stream on the PBS App**

A new three-part docuseries from four-time James Beard Award-winning chef and Emmy Award-winner Andrew Zimmern travels the globe to discover the creative solutions and breakthrough “blue-food” technologies that could not only feed humanity but also help save the world's threatened seas and fresh waterways. *Hope in the Water* highlights the stories of innovators, aquafarmers and fishers who are working toward a sustainable future. Award-winning filmmaker Brian Peter Falk (Robert Redford's *The Conspirator*; *What's Eating America*) serves as director of the series. Participating in the programs are environmental enthusiasts **Martha Stewart**, **Baratunde Thurston** (with **José Andrés**), and **Shailene Woodley**, who seek sustainable solutions while spotlighting hidden underworlds jeopardized by climate change, irresponsible fishing and exploitation, and habitat destruction.



- **Episode 1: *The Fish in the Sea* (June 19)** — New approaches to fishing on the open ocean aim to turn peril into plenty. Baratunde Thurston visits Puerto Rico and meets José Andrés.
- **Episode 2: *Farming in Water* (June 26)** — Farmed fish has a difficult legacy; can the sea can be responsibly and sustainably farmed? Martha Stewart visits coastal Maine to learn how.
- **Episode 3: *Changing the Menu* (July 3)** — Rising demand for seafood is increasing pressure on fisheries; diversifying seafood diets can help. Shailene Woodley learns more.

WETA Rocks Summer Concert Series

Saturday nights on WETA PBS; stream each with WETA Passport

WETA presents a summer concert series — *WETA Rocks* — that features entertaining rock and pop music concerts each Saturday night on WETA PBS (and some Thursday nights on WETA Metro) throughout June, July and August.

Each special (and others too!) are available for streaming with WETA Passport. The concert presentations are hosted by Jack Diamond, a longtime local radio announcer in Greater Washington, and WETA Classical's Linda Carducci, a former classic rock radio announcer. The two will share information about the artists as well as entertaining stories from the world of popular music. Below are the concert offerings this month. Enjoy the shows!

Elton John: The Million Dollar Piano (June 1 at 9 p.m. on WETA PBS, repeating June 2 at 4:30 p.m.) and ***Billy Joel: Live at Yankee Stadium*** (June 1, 10:30 p.m. on WETA PBS) • Celebrate legendary performer Elton John in a spectacular 2012 concert at Caesars Palace; and join the Piano Man for an iconic 1990 concert recorded at the historic Bronx baseball stadium.

Simon and Garfunkel: The Concert in Central Park (June 8 at 9 p.m. on WETA PBS, repeating June 9 at 4:30 p.m.) • See the iconic duo performing before more than 500,000 fans at a 1981 benefit concert for the world's most famous urban park.

The Rolling Stones: Grrr Live! (June 15 at 9 p.m., repeating on June 16 at 4 p.m.) • Enjoy the band's 50th anniversary with Bruce Springsteen, Lady Gaga, John Mayer, Mick Taylor, the Black Keys, Gary Clark Jr. and others in a 2012 concert at Newark's Prudential Center.



Katy Perry

CHRISTIE GOODWIN



Elton John

©JOSEPH GUAY



GETTY IMAGES

The Rolling Stones (above: Ronnie Wood)

Culture Club: Live at Wembley (June 22 at 9 p.m., repeating June 23 at 3 p.m.) and ***Pet Shop Boys: Dreamworld*** (June 22 at 10:30 p.m., repeating June 23 at 4:30 p.m.) • Rock out with the '80s pop legends Culture Club in a 2016 reunion concert before a hometown London crowd; and celebrate the Pet Shop Boys' 40th anniversary with a 2023 concert at Copenhagen's Royal Arena.

Katy Perry: The Prismatic World Tour (June 29 at 9 p.m., repeating June 30 at 3 p.m.) and ***P!nk! Live from Wembley Arena*** (June 29 at 10:30 p.m., repeating June 30 at 4:30 p.m.) • Experience the sensory explosion of eye-popping theatrics and infectious pop tracks from Katy Perry, one of today's most captivating performers; and join dynamic singer Pink for a sizzling 2006 concert at London's Wembley Arena.

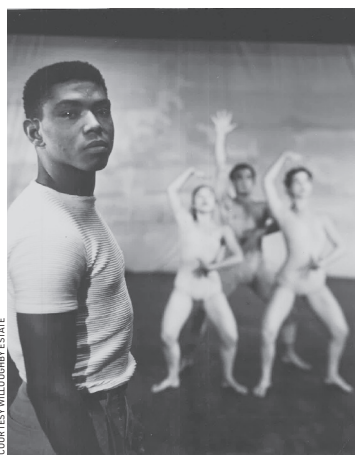


Series 3 airs Mondays at 10 p.m. starting June 17 on WETA PBS & WETA Metro, repeating Fridays, 9 p.m.; stream on the PBS App

The third season of PBS's popular cooking competition series begins this month, featuring eight new talented home cooks, two dynamic new judges and a new location. Award-winning chef and Los Angeles restaurateur Tim Hollingsworth, and Francis Lam, host of public radio's *The Splendid Table*, are new judges for Season 3 of *The Great American Recipe*, joining returning host Alejandra Ramos and judge Tiffany Derry in Nashville, Tennessee for eight new weekly episodes starting June 17. Ramos is a *Today Show* contributor and writer; and Derry is a celebrity chef, restaurateur and food advocate.

An upbeat cooking competition that spotlights the extraordinary variety of tastes and traditions found across the country, the series celebrates community, tradition and innovation, and the wonderful diversity of America's cuisine. As in earlier seasons, Series 3 features the competitors preparing their most beloved recipes. Each week the judges determine which home cook has the winning dish and, in the final week, the top three contestants will compete for a chance to win this year's top honors.

Series 3 participating cooks — Doug Heilman, Kim Sherry, Ingrid Portillo, Mae Chandran, Adjo Honsou, Marcella DiChiara, Jon Hinojosa and Tim Harris — hail from Pennsylvania, Alaska, North Carolina, California, Missouri, Massachusetts, Texas and South Carolina, respectively. This season of *The Great American Recipe* was filmed at Green Door Gourmet, a 350-acre farm in Nashville.



American Masters: Ailey

LGBTQ+ Pride Month on WETA PBS & WETA Metro

Visit weta.org/pridemonth to learn more.

**Below are programs on both WETA PBS and WETA Metro (in blue);
and WETA Metro only (in black)**

American Masters: Ballerina Boys Sat 6/1, 8pm

American Masters: Ailey Sat 6/1, 9pm

Independent Lens: No Straight Lines Sat 6/8, 8pm

American Masters: Keith Haring: Street Art Boy Sat 6/8, 9:30pm

Disco: Soundtrack of a Revolution Tues 6/18-6/25-7/2, 9pm (see page 5)

Becoming Frida Kahlo Tue 6/18-6/25-7/2, 10pm

American Experience: The War on Disco Sat 6/22, 8pm

American Masters: Little Richard: The King and Queen of Rock and Roll Sat 6/22, 9pm

Also find more than 30 Pride Month programs on WETA World this month, including the titles below. Visit weta.org/schedule or weta.org/pridemonth for descriptions and show times: *American Experience: Stonewall Uprising • Independent Lens: Cured • Independent Lens: Mama Bears • POV: We Are the Radical Monarchs • Out in Rural America • POV: Out in the Night • We'll Meet Again: Coming Out • Prideland • Unidad: Gay & Lesbian Latinos Unidos • American Experience: Casa Susana • Stories from the Stage: Pride • Justly Wed: Scenes from the Marriage Equality Movement • American Masters: James Baldwin: The Price of the Ticket • Independent Lens: Breaking the News •*

Disco: Soundtrack of a Revolution

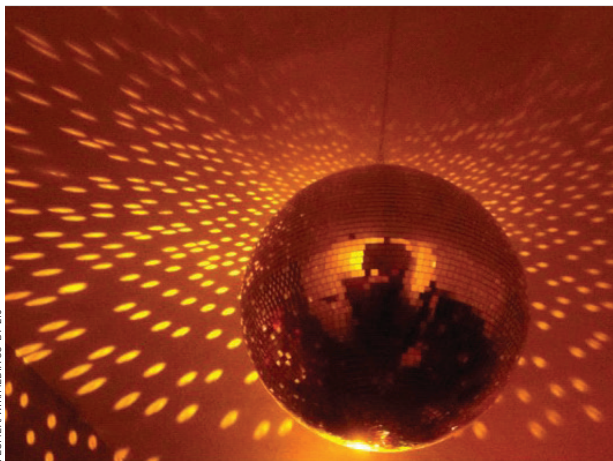
Sunday, June 9, 7-10:30 p.m. on WETA PBS; stream on the PBS App

A new three-part series from the BBC and PBS spotlights the surprising and unexplored history of disco — the preeminent popular music of the 1970s. The documentary captures the story of the genre: its rise, its fall and its legacy. From the basement bars of New York City to the peak of global charts, along with iconic tracks and remarkable footage, *Disco: Soundtrack of a Revolution* presents a powerful, revisionist history of the disco age. The story of the music, and its artistic influence and impact as a social and cultural force for change, is told by the original musicians, promoters and innovators, as well as modern-day musical icons. Participating are The Village People's Victor Willis, Labelle's Nona Hendryx, The Trammps' Earl Young, Scissor Sisters' Ana Matronic and Jake Shears, Sylvester's Jeanie Tracy, and an array of others.

- **Episode 1: *Rock the Boat*** — Learn how the global disco music craze was born in the apartments and basement bars of 1970s New York.
- **Episode 2: *Ain't No Stoppin' Us Now*** — As disco conquers the mainstream, see it turn Black women and gay men into icons.
- **Episode 3: *Stayin' Alive*** — Explore how disco fell victim to a violent backlash and emerged to come back stronger.

Disco's dance-floor culture went on to take over the world, but its success also obscured its wider significance. Inextricably bound up with the major liberation movements of the 1970s, the story of disco speaks to some of the biggest issues of today: LGBTQ+ identity and female empowerment. The series also underscores the genre's survival. Sparking a hate-fueled backlash, the music and its ethos went back underground, where it evolved into an electronic dance sound that laid the foundations for contemporary dance culture.

The series repeats Sunday, June 16, 12:30-4 p.m. on WETA PBS; and Tuesdays at 9 p.m. starting June 18 on WETA PBS and WETA Metro.



FLUME/WIKIMEDIA CC-BY-2.0



GETTY IMAGES

Donna Summer

Les Misérables 25th Anniversary Concert at the O2

Sunday, June 2 at 6:30 p.m. on WETA PBS, repeating June 8

No one could have guessed on October 8, 1985, when *Les Misérables* opened in London at the Barbican Theatre that it would become a worldwide phenomenon and be seen by tens of millions of people. In October 2010, the blockbuster musical celebrated its 25th birthday, and to mark the occasion, producer Cameron Mackintosh staged a special celebratory concert in London that hosted a company of more than 300 actors and musicians. Among them were leading UK tenor Alfie Boe as Jean Valjean; Nick Jonas as Marius; Norm Lewis as Javert; Matt Lucas as Thénardier; Lea Salonga as Fantine; Jenny Galloway as Madame Thénardier; and Camilla Kerslake as Cosette; alongside casts from some of the show's productions. Among songs performed are "I Dreamed a Dream," "On My Own," "Stars," "Bring Him Home," "Do You Hear the People Sing?," "One Day More," "Empty Chairs at Empty Tables" and "Master of the House."



DAN WOOLER

(l-r) Alfie Boe, Colm Wilkinson, Ramin Karimloo and Nick Jonas

Stream with WETA Passport



Stream your favorite shows with WETA Passport, a member benefit that offers access to a vast library of superb programs available for streaming on demand. To learn how to access programming with WETA Passport, visit weta.org/passporthelp.



Foyle's War, Series 1-5

Perennial audience favorite *Foyle's War*, starring Michael Kitchen as the popular World War II-era British detective, comes to WETA Passport for streaming! Binge-watch Series 1-5 as of June 1.



WETA Rocks Summer Concert Series

WETA presents rock and pop performance specials Saturday nights on WETA PBS, featuring top acts — from Elton John to The Rolling Stones to Katy Perry. Stream these vibrant concerts with WETA Passport.



The Real Crown: Inside the House of Windsor

Britain's royal family is in the spotlight in a five-part series that explores its members' lives in the public eye across seven decades, through triumphs and challenges. Binge-watch the series now with WETA Passport.



Miss Fisher's Murder Mysteries, Series 2 & 3

The popular Australian mystery drama stars Essie Davis as glamorous private eye Phryne Fisher — who sleuths cases in 1920s Melbourne. Binge-watch Series 2 and 3 (21 episodes) with WETA Passport as of June 1.



Rick Steves' Europe

Learn about sites to visit and sights to see from public media's renowned expert on European destinations. Binge-watch 12 seasons and a wide array of specials and miniseries (arts & more) now with WETA Passport.



Grantchester & More Sunday Dramas

As of Sunday night, June 16, when new seasons of *Professor T* (UK), *Grantchester* on *Masterpiece* (above) and *DI Ray* premiere, binge-watch the all-new episodes of these three ongoing dramas with WETA Passport.

Also streaming in June: Watch the sequel series *Long Lost Family: What Happened Next?*, which comes to WETA Passport starting June 26 and rolls out a new season each week.

Visit weta.org/schedule for the most up-to-date schedule information.

Denotes WETA productions, co-productions and presentations

	8:00	8:30	9:00	9:30	10:00	10:30
1 Sat	(from 7:30pm) Ken Burns: <i>The National Parks</i>		Elton John: The Million-Dollar Piano			Billy Joel: Live at Yankee Stadium (to 12:30am)
2 Sun	(from 6:30pm) Les Misérables 25th Anniversary Concert at the O2					<i>Grantchester</i> : Investigating Life's Mysteries (to 12m)
3 Mon	5-Minute Yoga Fix with Peggy Cappy		Signature Dish: Comfort Food Favorites	Gospel Live! Presented by Henry Louis Gates, Jr.		
4 Tue	Ken Burns: <i>The Civil War</i>				Elton John: The Million Dollar Piano (to 11:30pm)	
5 Wed	Great Performances: Rodgers & Hammerstein's 80th Anniversary Concert				Rick Steves: Fascism in Europe (to 11:30pm)	
6 Thu	Midsomer Murders, Series 5: A Worm in the Bud			(9:31pm) Miss Fisher's Murder Mysteries, Series 1 (Ep 10: <i>Death by Miss Adventure</i>)		
7 Fri	Washington Week with <i>The Atlantic</i>	Memory Makeover with Dr. Daniel Amen, MD				New Rock, Pop and Doo Wop (to 12:30am)
8 Sat	Variety Studio: Actors on Actors, Series 19 (Eps 1 & 2)		Simon and Garfunkel: The Concert in Central Park			<i>Rick Steves' Europe Marathon</i> (to 2am)
9 Sun	(from 7pm) Disco: Soundtrack of a Revolution (Pts 1-3 of 3)					<i>Rick Steves' Europe Marathon</i> (to 1am)
10 Mon	Aging Backwards 4: The Miracle of Flexibility		Signature Dish: Pizza Perfection	Simon and Garfunkel: The Concert in Central Park		
11 Tue	My Music Presents: New Rock, Pop and Doo Wop				Frontline: Crisis on Campus	
12 Wed	Nature: Grizzly 399: Queen of the Tetons			Harriet Tubman: Visions of Freedom		
13 Thur	Midsomer Murders, Series 22: The Wolf Hunter of Little Worthy			(9:31pm) Miss Fisher's Murder Mysteries, Series 1 (Ep 11: <i>Blood and Circuses</i>)		
14 Fri	Washington Week with <i>The Atlantic</i>	History with David Rubenstein, Season 4	Great Performances at the Met: <i>Carmen</i> (to 12m)			
15 Sat	The Black Fire		The Rolling Stones: Grrr Live!			
16 Sun	Professor T, Series 3 (UK) (Pt 1 of 6. <i>Heir to the Throne</i>)		<i>Grantchester</i> , Series 9 on Masterpiece (Pt 1 of 8)		DI Ray, Series 2 (Pt 1 of 6. <i>Wrong Place</i>)	
17 Mon	Antiques Roadshow: Fort Worth, Hour 1		Signature Dish: Mediterranean Magic	Signature Dish: Cooking with Fire	The Great American Recipe, Series 3 (Pt 1 of 8. <i>A First Taste</i>)	
18 Tue	Finding Your Roots w/ Henry Louis Gates, Jr., Series 10 Encore: <i>In the Blood</i>		Disco: Soundtrack of a Revolution (Pt 1 of 3. <i>Rock the Boat</i>)		Becoming Frida Kahlo (Pt 1 of 3. <i>The Making and Breaking</i>)	
19 Wed	Dynamic Planet (Pt 1 of 4. <i>Ice</i>)		Hope in the Water (Pt 1 of 3. <i>The Fish in the Sea</i>)		NOVA: Alaskan Dinosaurs	
20 Thur	Midsomer Murders, Series 22: The Stitcher Society			(9:31pm) Miss Fisher's Murder Mysteries, Series 1 (Ep 12: <i>Murder in the Dark</i>)		
21 Fri	Washington Week with <i>The Atlantic</i>	History with David Rubenstein, Season 5	The Great American Recipe, Series 3 (Pt 1 of 8. <i>A First Taste</i>)		Roots of Comedy with Jesus Trejo (Pts 1 & 2 of 6)	
22 Sat	Disco: Soundtrack of a Revolution (Pt 1 of 3. <i>Rock the Boat</i>)		Culture Club: Live at Wembley			Pet Shop Boys: Dreamworld (to 12m)
23 Sun	Professor T, Series 3 (UK) (Pt 2 of 6. <i>The Perfect Picture</i>)		<i>Grantchester</i> , Series 9 on Masterpiece (Pt 2 of 8)		DI Ray, Series 2 (Pt 2 of 6. <i>Rivals</i>)	
24 Mon	Antiques Roadshow: Fort Worth, Hour 2		Signature Dish: Crossover Cuisine	Signature Dish: South-east Asian Specialties	The Great American Recipe, Series 3 (Pt 2 of 8. <i>Secrets and Staples</i>)	
25 Tue	Finding Your Roots w/ Henry Louis Gates, Jr., Series 10 Encore: <i>Viewers Like You</i>		Disco: Soundtrack of a Revolution (Pt 2 of 3. <i>Ain't No Stoppin' Us Now</i>)		Becoming Frida Kahlo (Pt 2 of 3. <i>Love and Loss</i>)	
26 Wed	Dynamic Planet (Pt 2 of 4. <i>Fire</i>)		Hope in the Water (Pt 2 of 3. <i>Farming the Water</i>)		NOVA: Arctic Ghost Ship	
27 Thur	Midsomer Murders, Series 22: Happy Families			(9:31pm) Miss Fisher's Murder Mysteries, Series 1 (Ep 13: <i>King Memses' Corpse</i>)		British Antiques Roadshow
28 Fri	Washington Week with <i>The Atlantic</i>	History with David Rubenstein, Season 5	The Great American Recipe, Series 3 (Pt 2 of 8. <i>Secrets and Staples</i>)		Roots of Comedy with Jesus Trejo (Pts 3 & 4 of 6)	
29 Sat	Disco: Soundtrack of a Revolution (Pt 2 of 3. <i>Ain't No Stoppin' Us Now</i>)		Katy Perry: The Prismatic World Tour			P!nk: Live from Wembley Arena (to 11:30pm)
30 Sun	Professor T, Series 3 (UK) (Pt 3 of 6. <i>Truth and Justice</i>)		<i>Grantchester</i> , Series 9 on Masterpiece (Pt 3 of 8)		DI Ray, Series 2 (Pt 3 of 6. <i>The Hunt for Rav</i>)	
	8:00	8:30	9:00	9:30	10:00	10:30

PBS NewsHour airs weeknights at 7 p.m.
PBS News Weekend airs Sat./Sun. at 6 p.m.

Amanpour and Company airs late weeknights (check listings)

TV Listings

WETA PBS in June



Listings are accurate as of press time. For latest schedules, visit weta.org/schedule or call 703-998-2724.

WETA PBS is devoted to children's educational programming 8 a.m.-3 p.m., Monday-Friday. For 24 hours of children's programming each day, tune in to the WETA PBS Kids channel. See page 15 for information.

Program Key

Blue type – WETA productions, co-productions and presentations.

R – Repeat of recent programming.



TIM LLEWELLYN PHOTOGRAPHY

Saturday, June 1 at 7:30 p.m. on WETA PBS, repeating June 3
Program special *Ken Burns: The National Parks* spotlights the filmmaker's epic 2009 documentary, a WETA co-production. Also watch *Ken Burns: The Civil War*, airing June 4 at 8 p.m. on WETA PBS.

1 Saturday

- 6AM WASHINGTON WEEK WITH THE ATLANTIC** – R
6:30 FIRING LINE WITH MARGARET HOOVER
7AM PBS NEWSHOUR – R
8AM KEN BURNS: THE CIVIL WAR – See Tuesday, June 4, 8 p.m. **Repeats tonight**
10AM IT'S ACADEMIC – See 7 p.m. listing.
10:30 GOSPEL LIVE! PRESENTED BY HENRY LOUIS GATES, JR. – See Monday, June 3, 9:30 p.m. **Repeats Mon 6/3, 3:30pm**
12N ALL CREATURES GREAT AND SMALL, SERIES 4 ON MASTERPIECE – WETA reprises the newest season of the popular drama that follows the life of veterinarian James Herriot in 1930s Yorkshire. In Series 4, with Europe at war, the community in Darrowby pulls together more than ever before. *Parts 1-4 of 7.* (Parts 5-7 air Sunday, June 2, 12-4 p.m.) **Repeats Sun 6/2, midnight**
5:00 5-MINUTE YOGA FIX WITH PEGGY CAPPY – See Monday, June 3, 8 p.m.
6:00 PBS NEWS WEEKEND – John Yang anchors.
6:30 WASHINGTON WEEK WITH THE ATLANTIC – R
7:00 IT'S ACADEMIC – The high school quiz show showcases the academic achievements of D.C.-area students. It's the playoffs! Competing this week are Richard Montgomery, George Marshall and Walter Johnson high schools. Aired 10am Saturday, repeating 7pm, and Monday, 3pm. Stream on the PBS App and at YouTube.com/wetapbs.
7:30 KEN BURNS: THE NATIONAL PARKS – Explore the beauty of America's magnificent public parklands, from Acadia to Yosemite, Yellowstone to the Grand Canyon. Filmmakers Ken Burns and Dayton Duncan reveal fascinating behind-the-scenes stories about the making of their series *The National Parks: America's Best Idea*, a 2009 co-production of Florentine Films and WETA. **Repeats Mon 6/3, 11pm; Sat 6/8, 8am**
9:00 ELTON JOHN: THE MILLION DOLLAR PIANO – Celebrate the iconic singer, songwriter and performer in a spectacular 2012 concert at The Colosseum at Caesars Palace in Las Vegas. Featuring a state-of-the-art Yamaha piano, this entertaining show features Elton John performing his top hits. **Repeats Sun 6/2, 4:30pm; Tue 6/4, 10pm**

- 10:30 BILLY JOEL: LIVE AT YANKEE STADIUM** – Join the Piano Man for this iconic 1990 concert recorded live at the historic stadium in the Bronx. The program includes interviews with Joel and behind-the-scenes footage from that special night.
12:30AM KEN BURNS: THE CIVIL WAR – R

2 Sunday

- 6AM MEMORY MAKEOVER WITH DANIEL AMEN, MD** – See Friday, June 7, 8:30 p.m.
8AM RICK STEVES: FASCISM IN EUROPE – See Wednesday, June 5, 10 p.m.
9:30 MY MUSIC PRESENTS: NEW ROCK, POP AND DOO WOP – See Friday, June 7, 10:30 p.m.
11:30 WASHINGTON WEEK WITH THE ATLANTIC – R
12N ALL CREATURES GREAT AND SMALL, SERIES 4 ON MASTERPIECE – WETA reprises the entire newest season of the popular drama that follows the life of veterinarian James Herriot in 1930s Yorkshire. In Series 4, with Europe at war, the community in Darrowby pulls together more than ever before. *Parts 5-7 of 7.*
4:00 VARIETY STUDIO: ACTORS ON ACTORS, SERIES 19 – A series features candid conversations between contemporary star actors. *Episode 1.* Cillian Murphy and Margot Robbie; Bradley Cooper and Emma Stone. **Repeats Fri 6/7, 4:30pm, 12:30am; Sat 6/8, 8pm; Mon 6/10, 4pm**
4:30 ELTON JOHN: THE MILLION DOLLAR PIANO – R
6:00 PBS NEWS WEEKEND – John Yang anchors. **Repeats Monday, 7am**
6:30 LES MISÉRABLES 25TH ANNIVERSARY CONCERT AT THE O2 – Enjoy an anniversary celebration of the beloved musical that became a worldwide phenomenon. The magnificent score includes the songs "I Dreamed a Dream," "On My Own," "Bring Him Home," "Empty Chairs at Empty Tables" and many more. Performers include Alfie Boe, Nick Jonas, Lea Salonga, Colm Wilkinson, Norm Lewis and Ramin Karimloo. **Repeats Sat 6/8, 11am**
10:30 GRANTCHESTER: INVESTIGATING LIFE'S MYSTERIES – Go behind-the-scenes with the cast and creators of the *Masterpiece* mystery series that features a vicar at the center of local crimes and murders. The series is a winning combination of delightful sleuthing, articulate writing and engaging mystery. **Repeats Tue 6/4, 11:30pm**
12M ALL CREATURES GREAT AND SMALL, SERIES 4 ON MASTERPIECE – *Parts 1-4 of 7.* R



©JOSEPH GUAY

Saturdays at 9 p.m. on WETA PBS

The *WETA Rocks Summer Concert Series* features performance specials spotlighting pop music acts, starting with a Las Vegas concert – *Elton John: The Million Dollar Piano* on June 1. See pg 3.



AMANDA LEE FOR WETA

SIGNATURE DISH A WETA PRODUCTION

Mondays at 9 p.m. on WETA PBS; 8 p.m. on WETA Metro
Encore episodes of WETA restaurant series *Signature Dish* showcase standout meals. Above: Host Seth Tillman with Cielo Rojo's David Perez and Carolina McCandless in *Comfort Food Favorites*.

3 Monday

WEEKDAYS IN JUNE:

6AM NHK NEWSLINE

6:30AM BBC NEWS

7AM (Mondays:) PBS NEWS WEEKEND

7AM (Tuesdays-Saturdays:) PBS NEWSHOUR – R

7:30 (Mon:) WASHINGTON WEEK WITH THE ATLANTIC – R

8AM-3PM WETA KIDS PROGRAMMING

5PM AMANPOUR AND COMPANY – Rpt of previous night

6PM BBC NEWS: THE CONTEXT

6:30 BBC NEWS AMERICA

7PM PBS NEWSHOUR – Each weeknight, the WETA production presents in-depth news reports and analysis of current events with a news summary, live studio interviews and discussions of domestic and international issues. Amna Nawaz and Geoff Bennett anchor. Visit pbs.org/newshour. **Rpts next day, 7am**

8:00 **5-MINUTE YOGA FIX WITH PEGGY CAPPY** – Learn how to combat the effects of aging with stretching, breathwork and strength-building to maintain the four pillars that support the structure of our bodies: strength, flexibility, balance and mobility. **Repeats Sun 6/9, 6am, 3:30pm**

9:00 **SIGNATURE DISH, SEASON 2: COMFORT FOOD FAVORITES** – In WETA's local restaurant series, Season 2 encore episodes kick off with hearty comfort food. Host Seth Tillman tries the local *blue catfish fish and chips* at Preserve in Annapolis, MD; a bowl of chicken soup (*pozole verde*) at Cielo Rojo in Takoma Park, MD, and *chicken parmigiana* at Caruso's Grocery in Capitol Hill East, D.C.

9:30 **GOSPEL LIVE! PRESENTED BY HENRY LOUIS GATES, JR.** – Presented by renowned scholar and WETA production partner Prof. Henry Louis Gates, Jr., a concert celebration honors the legacy of gospel music in America, featuring musical artists singing gospel classics. **Repeats Wed 6/5, 11:30pm; Sun 6/9, 2pm**

11:00 **KEN BURNS: THE NATIONAL PARKS – R**

1AM **AMANPOUR AND COMPANY** – Capping primetime programming each weeknight, Christiane Amanpour leads conversations with global thought leaders on contemporary issues. **Repeats next weekday, 5pm**

4 Tuesday

8:00 **KEN BURNS: THE CIVIL WAR** – An overview of the acclaimed 1990 history documentary *The Civil War*, a co-production of Florentine Films and WETA, celebrates the landmark series. The special features video

clips and interviews with filmmaker Ken Burns, writer Geoffrey Ward, documentarian Ric Burns, cinematographer Buddy Squires and others. **Repeats Wed 6/5, 3pm; Tue 6/11, 11pm**

10:00 **ELTON JOHN: THE MILLION DOLLAR PIANO – R**

11:30 **GRANTCHESTER: INVESTIGATING LIFE'S MYSTERIES – R**

5 Wednesday

8:00 **GREAT PERFORMANCES: RODGERS & HAMMERSTEIN'S 80TH ANNIVERSARY CONCERT** – Explore the vast repertoire of musical theater pioneers Richard Rodgers and Oscar Hammerstein II in a star-studded concert featuring Aaron Tveitt, Patrick Wilson and others, who perform songs from shows *Carousel*, *South Pacific*, *The King and I*, *The Sound of Music* and more. **Repeats Thur 6/6, 3pm**

10:00 **RICK STEVES: FASCISM IN EUROPE** – With travel expert Rick Steves, explore how fascism rose and fell in Europe, tracing the ideology's history. Steves visits sites throughout Europe relating to fascism and talks to eyewitnesses. **Repeats Fri 6/7, 3pm; Sun 6/9, 7am**

11:30 **GOSPEL LIVE! PRESENTED BY HENRY LOUIS GATES, JR. – R**

6 Thursday

8:00 **MIDSOMER MURDERS, SERIES 5: A WORM IN THE BUD** – John Nettles stars. When the body of Susan Bartlett, wife of a local farmer, is discovered in Setwale Wood, local villagers assume she committed suicide due to depression related to her inability to have a child. Barnaby probes the case as a murder, and he and Troy quickly find themselves thrust into a whirlwind of witchcraft, potions, infidelity and land feuds.

9:31 **MISS FISHER'S MURDER MYSTERIES, SERIES 1** – Essie Davis stars. *Episode 10 of 13. Death by Miss Adventure*. Phryne investigates the death of a young female worker in a supposed factory accident and soon learns that the woman's death might not be the misadventure the police think it is. Faced with a wall of secrecy and lies, Phryne sends her trusty maid, Dot, undercover to investigate.

11:00 **YOUNG FOREVER WITH MARK HYMAN, MD** – Learn science-based strategies and tips from functional medicine practitioner Dr. Mark Hyman, who offers a practical guide to creating and sustaining health – for life. **Repeats Mon 6/10, 11pm**

7 Friday

8:00 **WASHINGTON WEEK WITH THE ATLANTIC** – In WETA's weekly production, *The Atlantic* editor-in-chief Jeffrey Goldberg moderates a roundtable discussion with award-winning journalists who provide reporting and analysis of the major news stories from the nation's capital. Visit pbs.org/washingtonweek. **Repeats Sat 6/8, 6am, 6:30pm; Sun 6/9, 11am; Mon 6/10, 7:30am**



MCGEE MEDIA

Monday, June 3 at 9:30 p.m. on WETA PBS

Gospel Live! Presented by Henry Louis Gates, Jr. presents a concert in Los Angeles celebrating gospel music and its legacy in America. Above: Gates on stage with singer-songwriter Erica Campbell.

- 8:30 MEMORY MAKEOVER WITH DANIEL AMEN, MD** – Psychiatrist, neuroscientist and *New York Times* bestselling author Dr. Daniel Amen explains how to supercharge memory and remember what matters most to you. The process of strengthening memory is based on overcoming risk factors that destroy the brain's capacities. **Repeats Wed 6/12, 11pm**
- 10:30 MY MUSIC PRESENTS: NEW ROCK, POP AND DOO WOP** – A lively celebration of doo wop music features full-length performances by acts including Johnny Maestro, The Duprees, Jay Black, Little Anthony & The Imperials, Ronnie Spector, Frankie Valli, Jerry Butler and many more artists from the '50s and '60s. **Repeats Sat 6/8, 4pm; Tue 6/11, 8pm; Wed 6/12, 3pm; Thur 6/13, 11pm**
- 12:30AM VARIETY STUDIO: ACTORS ON ACTORS, SERIES 19** – *Episode 1.* Cillian Murphy and Margot Robbie; Bradley Cooper and Emma Stone. **R**

8 Saturday

- 6AM-8AM** See the Saturday, June 1 listings.
- 8AM KEN BURNS: THE NATIONAL PARKS** – **R**
- 10AM IT'S ACADEMIC** – Two episodes; see 7 p.m. listing.
- 11AM LES MISÉRABLES 25TH ANNIVERSARY CONCERT AT THE O2** – **R**
- 3:00 AGING BACKWARDS 4: THE MIRACLE OF FLEXIBILITY** – See Monday, June 10, 8 p.m.
- 4:00 MY MUSIC PRESENTS: NEW ROCK, POP AND DOO WOP** – **R**
- 6:00 PBS NEWS WEEKEND** – John Yang anchors.
- 6:30 WASHINGTON WEEK WITH THE ATLANTIC** – **R**
- 7:00 IT'S ACADEMIC** – Two episodes! The high school quiz show showcases the academic achievements of D.C. area students. It's the playoffs! Competing first are Sandy Spring Friends, Langley and South Lakes high schools – and then Landon, Washington-Liberty and Whitman high schools. Aired 10am/10:30am Saturday, repeating 7pm/7:30pm, and Monday, 3pm/3:30pm. Stream on the PBS App and at [YouTube.com/wetapbs](https://www.youtube.com/wetapbs).
- 8:00 VARIETY STUDIO: ACTORS ON ACTORS, SERIES 19** – A series features candid conversations between contemporary star actors. *Episode 1.* Cillian Murphy and Margot Robbie; Bradley Cooper and Emma Stone. **R**
- 8:30 VARIETY STUDIO: ACTORS ON ACTORS, SERIES 19** – *Episode 2.* Robert Downey Jr. and Mark Ruffalo; Colman Domingo and Jacob Elordi. **Repeats Sun 6/9, 6:30pm; Mon 6/10, 4:30pm; Thur 6/13, 4:30pm**
- 9:00 SIMON & GARFUNKEL: THE CONCERT IN CENTRAL PARK** – A special program features the iconic musical duo performing before the more than 500,000 fans who came out for a once-in-a-lifetime 1981 benefit concert for the world's most famous urban park. The concert features the pair's greatest hits, from "Mrs. Robinson" to "The Sound of Silence." **Repeats Sun 6/9, 4:30pm; Mon 6/10, 9:30pm; Thur 6/13, 3pm**
- 10:30 RICK STEVES' EUROPE MARATHON** – (to 2am)

9 Sunday

- 6AM 5-MINUTE YOGA FIX WITH PEGGY CAPPY** – **R**
- 7AM RICK STEVES: FASCISM IN EUROPE** – **R**
- 8:30 BENJAMIN FRANKLIN** – The Ken Burns documentary, a Florentine Films and WETA co-production, explores the revolutionary life of one of the 18th century's most consequential and compelling personalities, whose work and words unlocked the mystery of electricity and helped create the United States. *Part 1 of 2.* *Join or Die (1706-1774).* After building a printing empire in Philadelphia with his wife, Franklin gains worldwide fame from electricity experiments, then spends years in London trying to keep Britain and America together as his family comes apart. **Repeats tonight, 1am**
- 11AM WASHINGTON WEEK WITH THE ATLANTIC** – **R**
- 11:30 BENJAMIN FRANKLIN** – The WETA co-production continues. *Part 2 of 2.* *An American (1775-1790).* In wartime Philadelphia, Franklin helps Thomas Jefferson craft the Declaration of Independence. In Paris, he wins French support for the American Revolution. Back home, he works on the Constitution of the new United States.
- 2:00 GOSPELLIVE! PRESENTED BY HENRY LOUIS GATES, JR.** – **R**
- 3:30 5-MINUTE YOGA FIX WITH PEGGY CAPPY** – **R**
- 4:30 SIMON AND GARFUNKEL: THE CONCERT IN CENTRAL PARK** – **R**
- 6:00 PBS NEWS WEEKEND** – John Yang anchors. **Repeats Monday, 7am**
- 6:30 VARIETY STUDIO: ACTORS ON ACTORS, SERIES 19** – A series features candid conversations between

contemporary star actors. *Episode 2.* Robert Downey Jr. and Mark Ruffalo; Colman Domingo and Jacob Elordi. **R**

7:00 DISCO: SOUNDTRACK OF A REVOLUTION – *Parts 1-3 of 3.* From the basement bars of '70s New York City to the peak of the global charts, along with iconic tracks and remarkable footage, this series offers a powerful, revisionist history of the disco age. **Repeats Sun 6/16, 12:30-4pm; Tuesdays, 9pm starting June 18.**

- 10:30 RICK STEVES' EUROPE MARATHON**
- 1AM BENJAMIN FRANKLIN** – *Parts 1 & 2 of 2.* **R**

10 Monday

- 7:00 PBS NEWSHOUR** – Weeknights. Visit [pbs.org/newshour](https://www.pbs.org/newshour). **Repeats next day, 7am**
- 8:00 AGING BACKWARDS 4: THE MIRACLE OF FLEXIBILITY** – Join Miranda Esmonde-White to learn how gentle flexibility and range of motion exercises can improve posture, help reverse signs of aging, improve organ health, and increase energy. This program examines how sitting less and moving more is vital to every aspect of life. **Repeats Fri 6/14, midnight**
- 9:00 SIGNATURE DISH, SEASON 2: PIZZA PERFECTION** – From the unique Roman-style "pinsas" of La Casina in Capitol Hill to the Detroit-style delights of Shaw's Motown Square and the Greek-influenced creations at Martha Dear in Mount Pleasant, host Seth Tillman explores the artistry behind perfect pies.
- 9:30 SIMON AND GARFUNKEL: THE CONCERT IN CENTRAL PARK** – **R**
- 11:00 YOUNG FOREVER WITH MARK HYMAN, MD** – **R**

11 Tuesday

- 8:00 MY MUSIC PRESENTS: NEW ROCK, POP AND DOO WOP** – See Friday, June 7, 10:30 p.m. **R**
- 10:00 FRONTLINE: CRISIS ON CAMPUS** – *Frontline* presents the inside story of the protests dividing college campuses over Israel and the war in Gaza. With *Retro Report*, *Frontline* illuminates the polarizing debate over free speech, antisemitism, Israel and the Palestinians, and the political forces behind the crisis.
- 11:00 KEN BURNS: THE CIVIL WAR** – **R**

12 Wednesday

- 8:00 NATURE: GRIZZLY 399: QUEEN OF THE TETONS** – The most famous bear in the Teton mountain range attempts to raise four cubs. As she makes increasingly unexpected and consequential choices to protect her family, Grizzly 399 stands as a symbol of the clash between humans and the wild.
- 9:30 HARRIET TUBMAN: VISIONS OF FREEDOM** – In Stanley Nelson's film, meet the Maryland abolitionist who repeatedly risked her own life and freedom to liberate others from slavery. Tubman was an Underground Railroad conductor, a Civil War scout, and a spy. **Repeats Fri 6/14, 4:30pm; Sun 6/16, 6:30pm**
- 11:00 MEMORY MAKEOVER WITH DANIEL AMEN, MD** – **R**



Friday, June 7 at 10:30 p.m. on WETA PBS

My Music Presents: New Rock, Pop and Doo Wop features classic songs from the 1950s and '60s by the original artists who made them famous, such as Little Anthony & The Imperials (above).



IT'S ACADEMIC A WETA PRESENTATION

Saturdays, 10 a.m./7 p.m. on WETA PBS & WETA Metro
High school quiz show *It's Academic*, hosted by Hillary Howard, doubles up episodes as of June 8, entering the semifinal round on June 15 before presenting the championship competition on June 29.

13 Thursday

- 8:00 MIDSOMER MURDERS, SERIES 22: THE WOLF HUNTER OF LITTLE WORTHY** – DCI John Barnaby (Neil Dudgeon), a lawman with a degree in psychology, probes murders in the fictional county of Midsomer with his associate, DS Jamie Winter (Nick Hendrix). After a local photographer wins an urban myth competition with his creation *The Wolf Hunter*, it gains a cult following and a man is killed. Mark Williams (*Father Brown*) and Louise Jameson (*Doctor Who*) guest star.
- 9:31 MISS FISHER'S MURDER MYSTERIES, SERIES 1** – Essie Davis stars. *Episode 11 of 13. Blood and Circuses.* The carnival is in town, and innocent fun turns to horror when one of the sideshow acts is murdered. Phryne poses as a magician's assistant to investigate. The carnival takes Phryne on a trip down memory lane – to the days when she and her sister, Janey, would sneak into the big top, until the night Janey disappeared.
- 11:00 MY MUSIC PRESENTS: NEW ROCK, POP AND DOO WOP** – R

14 Friday

- 8:00 WASHINGTON WEEK WITH THE ATLANTIC** – Jeffrey Goldberg moderates the roundtable discussion of the week's top news with award-winning journalists. Visit pbs.org/washingtonweek. **Repeats Sat 6/15, 6am, 6:30pm; Sun 6/16, 11am; Mon 6/17, 7:30am**
- 8:30 HISTORY WITH DAVID RUBENSTEIN, SEASON 4** – *Episode 10 of 10. Lynne Cheney.* Author Lynne Cheney examines the friendships and rivalries within the "Virginia Dynasty" of George Washington, Thomas Jefferson, James Madison and James Monroe, including the contradiction between the ideals of American liberty and prosperity they espoused and their status as slaveholders.
- 9:00 GREAT PERFORMANCES AT THE MET: CARMEN** – Acclaimed English director Carrie Cracknell makes her Metropolitan Opera debut with this classic story reset in the modern day. Told through today's social issues, the performance features mezzo-soprano Aigul Akhmetshina leading the cast in the title role, alongside tenor Piotr Beczala as Carmen's troubled lover, Don José. Daniele Rustioni conducts Bizet's score and Matthew Polenzani hosts.
- 12M AGING BACKWARDS 4: THE MIRACLE OF FLEXIBILITY** – R

15 Saturday

6AM-8AM See the Saturday, June 1 listings.
8AM-10AM WETA VIEWER FAVORITES
10AM IT'S ACADEMIC – Two episodes; see 7 p.m. listing.
11AM-6PM WETA VIEWER FAVORITES
6:00 PBS NEWS WEEKEND – John Yang anchors.

- 6:30 WASHINGTON WEEK WITH THE ATLANTIC** – R
7:00 IT'S ACADEMIC – Two episodes! The high school quiz show showcases the academic achievements of D.C.-area students. In a playoff, Paul VI, Bethesda-Chevy Chase and Georgetown Day high schools compete. Then, in a semifinal, Montgomery Blair, Blake and Jefferson high schools compete. **Airs 10am/10:30am Saturday, repeating 7pm/7:30pm, and Monday, 3pm/3:30pm.** Stream on the PBS App and at YouTube.com/wetapbs.
- 8:00 THE BLACK FIRE** – A documentary spotlights Washington, D.C.'s music and cultural heritage by highlighting the music, message and art of the people behind Black Fire Records – a Black-owned independent jazz record label started in the nation's capital in the 1970s by DJ and record producer Jimmy Gray and saxophonist James "Plunky" Branch.
- 9:00 THE ROLLING STONES: GRRR LIVE!** – Celebrate the classic band's 50th anniversary with Bruce Springsteen, Lady Gaga, John Mayer, Mick Taylor, the Black Keys, Gary Clark Jr. and others. This 2012 concert at New-ark's Prudential Center is one of the most memorable shows in the storied group's history. **Repeats Sun 6/16, 4pm**

11PM-6AM WETA VIEWER FAVORITES

16 Sunday

- 6AM-11AM WETA VIEWER FAVORITES**
11AM WASHINGTON WEEK WITH THE ATLANTIC – R
11:30AM-12:30PM WETA VIEWER FAVORITES
12:30 DISCO: SOUNDTRACK OF A REVOLUTION – *Parts 1-3 of 3. R*
4:00 THE ROLLING STONES: GRRR LIVE! – R
6:00 PBS NEWS WEEKEND – John Yang anchors. **Repeats Monday, 7am**
- 6:30 HARRIET TUBMAN: VISIONS OF FREEDOM** – R
8:00 PROFESSOR T, SERIES 3 (UK) – The crime drama starring Ben Miller returns with a new season of episodes. The Professor, jailed, must find a way to get his old life and job back. *Part 1 of 6. Heir to the Throne.* Professor T is in prison awaiting trial. He is not your typical inmate and the sights, sounds and smells of jail are difficult for him. Dan and Lisa try to distract him, seeking help with a murder case involving two brothers.
- 9:00 GRANTCHESTER, SERIES 9 ON MASTERPIECE** – In this new season of the drama, it's 1961 and change comes to Grantchester; Rev. Alphy Kottaram arrives as the new vicar. But will the locals ever be able to accept him as one of their own? *Part 1 of 8.* Will and Geordie investigate the mysterious death of a circus performer. Will receives a surprising offer that makes him question his life in Grantchester.
- 10:00 DI RAY, SERIES 2** – In a new season of the drama, two months after her suspension, DI Rachita Ray (Parminder Nagra) returns to investigate tensions between rival crime families. *Part 1 of 6.* After the fatal drive-by shooting of a young nurse and the head of a notorious crime syndicate threatens to erupt into a full-blown turf war, DI Ray must uncover the truth before tensions spill onto Birmingham streets.
- 11PM-6AM WETA VIEWER FAVORITES**



Sundays starting June 16 on WETA PBS & WETA Metro
Dramas *Professor T (UK)* (8 p.m.); *Grantchester on Masterpiece* (9 p.m.) & *DI Ray* (10 p.m.) feature new episodes. Pictured above: Juliet Stevenson, Ben Miller and Frances de la Tour in *Professor T*.

17 Monday

- 7:00 PBS NEWSHOUR** – Weeknights. Visit pbs.org/newshour. [Repeats next day, 7am](#)
- 8:00 ANTIQUES ROADSHOW: FORT WORTH, HOUR 1** – Celebrate the Season 21 *Roadshow* premiere with treasures like a rock 'n' roll poster collection circa 1968, a Delaware Tribe beaded baldric and an Auguste Rodin "Eternal Spring" bronze that could have the highest value of the season. But is it authentic?
- 9:00 SIGNATURE DISH, SEASON 2: MEDITERRANEAN MAGIC** – Host Seth Tillman dives into the rich culinary heritage of the Mediterranean. He first stops at Green Almond Pantry in Georgetown, then heads to Maryland to visit Cedars of Lebanon in Greenbelt and Melina in North Bethesda to explore unique flavors.
- 9:30 SIGNATURE DISH, SEASON 1: COOKING WITH FIRE** – The world's oldest culinary technique – cooking over an open flame – is on vivid display as Seth meets three masters of fire who char, roast and smoke their way to unforgettable eats. Signature dishes: Wagyu beef brisket at 2Fifty Texas Barbeque in Riverdale Park, MD; "The Hot Mess" white pizza at Frankly...Pizza! in Kensington, MD; and an iconic spiced lamb shoulder at Maydan in Northwest D.C.
- 10:00 THE GREAT AMERICAN RECIPE, SERIES 3** – Eight talented home cooks from regions around the country compete to win The Great American Recipe contest. *Part 1 of 8. A First Taste*. Meet the eight new contestants representing their regions. In the first challenge, the home cooks introduce their culinary style to the judges. [Repeats Tue 6/18, 4pm; Fri 6/21, 9pm](#)

18 Tuesday

- 8:00 FINDING YOUR ROOTS WITH HENRY LOUIS GATES, JR., SERIES 10** – In this WETA co-production, join Harvard scholar Henry Louis Gates, Jr., as he delves into the genealogy of famous Americans. *Encore: Episode 9 of 10. In the Blood*. Gates explores the roots of actor Michael Douglas and writer-director Lena Dunham. Both are children of famous artists, but their family trees contain a cast of intriguing characters whose lives were forgotten – until now. [Repeats Fri 6/21, 3pm; Sat 6/22, midnight](#)
- 9:00 DISCO: SOUNDTRACK OF A REVOLUTION** – Discover the fascinating and overlooked history of disco: its origins, triumphs, fall and legacy. *Part 1 of 3. Rock the Boat*. Explore the origin of a global music phenomenon born among gay and Black communities coming together in apartments and basement bars in 1970s New York, where dancefloors became a platform in their battle for visibility and inclusion. [Repeats Wed 6/19, 3pm; Sat 6/22, 8 pm, 1am; Sun 6/23, 2pm, 11pm](#)
- 10:00 BECOMING FRIDA KAHLO** – A documentary strips away the myths to reveal the passionate and brilliant artist living through extraordinary times. *Part 1 of 3. The*



MANUEL ÁLVAREZ BRAVO ARCHIVE

Tuesdays, June 18–July 2 at 10 p.m. on WETA PBS & WETA Metro Three-part docuseries *Becoming Frida Kahlo* explores the life of the celebrated Mexican artist, spotlighting her art and her personal life, including her tumultuous relationship with artist Diego Rivera.



COURTESY PBS

Mondays starting June 17, 10 p.m. WETA PBS; 9 p.m. WETA Metro *The Great American Recipe, Series 3* follows eight talented home cooks from around the country as they try to win the competition. Above: This season's judges with host Alejandra Ramos (right).

Making and Breaking. Explore the early life of Frida Kahlo as she discovers her genius for painting following a tragic, life-changing accident, leading her to encounter world-famous muralist Diego Rivera – who she later marries, twice. [Repeats Wed 6/19, 4pm](#)

19 Wednesday

- 8:00 DYNAMIC PLANET** – Embark on an epic journey spanning all continents to meet the extraordinary people and animals on the front line of climate change. *Part 1 of 4. Ice*. As the planet warms, the ice in three places – the Arctic, Antarctic and Himalayas – is melting rapidly, bringing significant consequences. [Repeats Thur 6/20, 3pm; Sun 6/23, noon](#)
- 9:00 HOPE IN THE WATER** – Explore the groundbreaking work of the people attempting what was once thought impossible: harvesting aquatic species to feed our growing planet while saving our oceans. *Part 1 of 3. The Fish in the Sea*. As sea life faces unprecedented threats, dive into new approaches to sustainable fishing on the open ocean. Journalist Baratunde Thurston visits a squid fishery in Puerto Rico. [Repeats Thur 6/20, 4pm; Sun 6/23, 1pm](#)
- 10:00 NOVA: ALASKAN DINOSAURS** – Wielding chainsaws to extract fossils frozen into permafrost and flying drones to map thousands of footprints, paleontologists discover that dinosaurs thrived in the unlikely of places – the Arctic Circle. [Repeats Fri 6/20, 4pm](#)

20 Thursday

- 8:00 MIDSOMER MURDERS, SERIES 22: THE STITCHER SOCIETY** – Neil Dudgeon and Nick Hendrix star. A local outcast, who was controversially acquitted of murder years previously, is the latest inductee into a post-operative heart rehab club. Following his arrival, members' dreams of a second chance at life begin being cut short. Guest stars include Hannah Waddingham (*Ted Lasso*; *Game of Thrones*).
- 9:31 MISS FISHER'S MURDER MYSTERIES, SERIES 1** – Essie Davis stars. *Episode 12 of 13. Murder in the Dark*. Phryne's cousins and Aunt Prudence's entire household come under suspicion when a young girl is found drowned in her aunt's fountain on the eve of a lavish fancy-dress party. Phryne and her aunt work together to investigate.

21 Friday

- 8:00 WASHINGTON WEEK WITH THE ATLANTIC** – Jeffrey Goldberg moderates the roundtable discussion of the week's top news with award-winning journalists. Visit pbs.org/washingtonweek. [Repeats Sat 6/22, 6am, 6:30pm; Sun 6/23, 11:30am; Mon 6/24, 7:30am](#)
- 8:30 HISTORY WITH DAVID RUBENSTEIN, SEASON 5** – In this WETA presentation, David Rubenstein talks with more of America's top scholars and writers, illuminating how history is made. *Episode 1 of 10. Beverly Gage*. Author of the Pulitzer Prize-winning biography, *G-Man: J. Edgar Hoover and the Making of the American Century*.

- 9:00 THE GREAT AMERICAN RECIPE, SERIES 3 – Part 1 of 8.** *A First Taste.* **R**
- 10:00 ROOTS OF COMEDY WITH JESUS TREJO** – Meet rising comedians who explore the diversity of the U.S. through stand-up comedy. Mexican American comedian Jesus Trejo hosts. *Part 1 of 6.* *Ali Sultan.* In Minneapolis, Trejo meets Yemeni comedian Ali Sultan. Ali opens up about his mental health struggles, weaving humor and vulnerability into a narrative of resilience and self-discovery. **Repeats Mon 6/24, 4pm**
- 10:30 ROOTS OF COMEDY WITH JESUS TREJO** – *Part 2 of 6.* *Vanessa Gonzalez.* Host Jesus Trejo follows Austin-based comedian Vanessa Gonzalez on a Texas adventure to her hometown of Laredo. Vanessa shares the humor of her childhood as the daughter of first-generation, Mexican American border patrol agents. **Repeats Mon 6/24, 4:30pm**

22 Saturday

- 6AM–8AM See the Saturday, June 1 listings.**
- 8AM JOURNEYS IN JAPAN**
- 8:30 LUCKY CHOW** – Concludes June 22.
- 8:30 DINING WITH THE CHEF** – Starts June 29.
- 9AM THIS OLD HOUSE + ASK THIS OLD HOUSE**
- 10AM IT'S ACADEMIC** – Two episodes; see 7 p.m. listing.
- 11AM AMERICA'S TEST KITCHEN FROM COOK'S ILLUSTRATED**
- 11:30 KEVIN BELTON'S NEW ORLEANS CELEBRATIONS**
- 12N IN JULIA'S KITCHEN WITH MASTER CHEFS**
- 12:30 CHRISTOPHER KIMBALL'S MILK STREET TELEVISION**
- 1:00 MY GREEK TABLE WITH DIANE KOCHILAS**
- 1:30 LIDIA'S KITCHEN** – Concludes June 22.
- 1:30 LIFE OF LOI: MEDITERRANEAN SECRETS** – Season 2 starts June 29.
- 2:00 JACQUES PÉPIN: HEART AND SOUL**
- 2:30 WEEKENDS WITH YANKEE** – Starts June 22.
- 3:00 FRENCH MAGNOLIA COOKS**
- 3:30 NEW SCANDINAVIAN COOKING** – Concludes June 22.
- 3:30 AMERICA THE BOUNTIFUL** – Starts June 29.
- 4:00 COOK'S COUNTRY FROM AMERICA'S TEST KITCHEN**
- 4:30 AMERICA'S TEST KITCHEN FROM COOK'S ILLUSTRATED**
- 5:00 PATI'S MEXICAN TABLE**
- 5:30 SAMANTHA BROWN'S PLACES TO LOVE**
- 6:00 PBS NEWS WEEKEND** – John Yang anchors.
- 6:30 WASHINGTON WEEK WITH THE ATLANTIC** – **R**
- 7:00 IT'S ACADEMIC** – Two semifinals! The high school quiz show showcases the academic achievements of D.C.-area students. Competing first are McLean, Rockville and Richard Montgomery high schools; then Sandy Spring Friends, Landon and Georgetown Day high schools. Aired 10am/10:30am Saturday, repeating 7pm/7:30pm, and Monday, 3pm/3:30pm. Stream on the PBS App and at YouTube.com/wetapbs.
- 8:00 DISCO: SOUNDTRACK OF A REVOLUTION** – *Part 1 of 3.* *Rock the Boat.* **R**
- 9:00 CULTURE CLUB: LIVE AT WEMBLEY** – Rock out with the iconic multi-platinum-selling '80s pop legends in a reunion concert before a sold-out hometown London crowd in 2016. Original band members Boy George, Roy Hay, Mikey Craig and Jon Moss perform their biggest hits. **Repeats Sun 6/23, 3pm**



Wednesdays at 8 p.m., June 19–July 10 on WETA PBS & WETA Metro
Dynamic Planet visits all seven continents to follow people and animals on the front lines of climate change, exploring how science, nature and tradition can prepare us for a fast-changing future.



COURTESY/AMERICAN PUBLIC TELEVISION

Thursdays at 8 p.m. on WETA PBS

WETA Thriller Thursdays presents *Midsomer Murders* (Series 22) starting June 13. In this season of the crime drama, Neil Dudgeon portrays DCI John Barnaby and Nick Hendrix is DS Jamie Winters.

- 10:30 PET SHOP BOYS: DREAMWORLD** – Celebrate the band's 40th anniversary in 2024 with a concert filmed at the Royal Arena in Copenhagen in July 2023. In this lavish stage show with a full backup band and mesmerizing visual backdrops, the Pet Shop Boys perform their greatest hits. **Repeats Sun 6/23, 4:30pm**
- 12M FINDING YOUR ROOTS WITH HENRY LOUIS GATES, JR., SERIES 10** – *Episode 9 of 10.* *In the Blood.* **R**
- 1AM DISCO: SOUNDTRACK OF A REVOLUTION** – *Part 1 of 3.* *Rock the Boat.* **R**

23 Sunday

- 6AM–9AM WETA KIDS PROGRAMMING**
- 9AM WHITE HOUSE CHRONICLE**
- 9:30 THIS IS AMERICA AND THE WORLD WITH DENNIS WHOLEY**
- 10:00 OPPORTUNITY KNOCK\$**
- 10:30 MOTORWEEK**
- 11:00 FIRING LINE WITH MARGARET HOOVER**
- 11:30 WASHINGTON WEEK WITH THE ATLANTIC** – **R**
- 12N DYNAMIC PLANET** – *Part 1 of 4.* *Ice.* **R**
- 1:00 HOPE IN THE WATER** – *Part 1 of 3.* *The Fish in the Sea.* **R**
- 2:00 DISCO: SOUNDTRACK OF A REVOLUTION** – *Part 1 of 3.* *Rock the Boat.* **R**
- 3:00 CULTURE CLUB: LIVE AT WEMBLEY** – **R**
- 4:30 PET SHOP BOYS: DREAMWORLD** – **R**
- 6:00 PBS NEWS WEEKEND** – John Yang anchors. **Repeats Monday, 7am**
- 6:30 HISTORY WITH DAVID RUBENSTEIN, SEASON 5** – *Episode 2 of 10.* *Richard Haass.* *Author of The Bill of Obligations: The Ten Habits of Good Citizens.* **Repeats Fri 6/28, 8:30pm**
- 7:00 MISS FISHER'S MURDER MYSTERIES, SERIES 1** – Essie Davis stars. *Episode 8 of 13.* *Away with the Fairies.* Phryne investigates the death of a magazine columnist and author of fairy stories. To get to the truth, she must unearth the deceptions and rampant rivalries of the magazine's staff. Meanwhile, Phryne rekindles an affair.
- 8:00 PROFESSOR T, SERIES 3 (UK)** – *Part 2 of 6.* *The Perfect Picture.* A bride is found dead on her wedding night in the hotel pool. Wedding photos portray the perfect picture of happiness. But the police and the Professor suspect foul play.
- 9:00 GRANTCHESTER, SERIES 9 ON MASTERPIECE** – *Part 2 of 8.* An abandoned baby is discovered on the same day that a hotel manager is found dead. Things are complicated further when Geordie is blindsided by Will's news.
- 10:00 DI RAY, SERIES 2** – *Part 2 of 6.* Having lost trace of two kidnappers in a daring car chase, DI Ray must team up with Serious Organized Crime to rescue her prime murder suspect before it's too late. A photo on Ray's laptop leads to a shocking discovery.
- 11:00 DISCO: SOUNDTRACK OF A REVOLUTION** – *Part 1 of 3.* *Rock the Boat.* **R**

24 Monday

- 7:00 PBS NEWSHOUR** – Weeknights. Visit pbs.org/newshour. **Repeats next day, 7am**

- 8:00 ANTIQUES ROADSHOW: FORT WORTH, HOUR 2** – Items include a Felipe Orlando oil, a baroque lockbox, and Packers memorabilia. One item is valued at up to \$200,000.
- 9:00 SIGNATURE DISH, SEASON 2: CROSSOVER CUISINE** – The innovative world of fusion cuisine, where culinary traditions blend and create something new, is the heart of this episode. Seth stops by Imperfecto in D.C.'s West End and then heads to Virginia to visit Mama Tigre in Oakton and Wooboi in Alexandria. **Repeats Tue 6/25, 3pm**
- 9:30 SIGNATURE DISH, SEASON 1: SOUTHEAST ASIAN SPECIALTIES** – While the flavors of Thai and Vietnamese cuisine are familiar to D.C.-area diners, other unique cuisines of Southeast Asia are gaining popularity. Host Seth Tillman samples three dishes: *ohno khauk swe* (coconut curry chicken noodle soup) at Thamee in Northeast DC; *lechon belly* at Kuya Ja's Lechon Belly in Kensington, MD; and fish head curry at Malaysian Kopitiam in Centreville, VA. **Repeats Tue 6/25, 3:30pm**
- 10:00 THE GREAT AMERICAN RECIPE** – Part 2 of 8. *Secrets and Staples*. Watch the home cooks create recipes that reveal their favorite secret ingredients and go-to grains. **Repeats Tue 6/25, 4pm; Fri 6/28, 9pm**

25 Tuesday

- 8:00 FINDING YOUR ROOTS WITH HENRY LOUIS GATES, JR., SERIES 10** – In this WETA co-production, join Harvard scholar Henry Louis Gates, Jr., as he delves into the genealogy of famous Americans. *Encore: Episode 10 of 10. Viewers Like You*. After a nationwide search, Gates meets three everyday Americans who are haunted by family mysteries – which Gates unravels. **Repeats Fri 6/28, 3pm; Sat 6/29, midnight**
- 9:00 DISCO: SOUNDTRACK OF A REVOLUTION** – Part 2 of 3. *Ain't No Stoppin' Us Now*. Experience the pinnacle of disco culture during the 1970s, set against the backdrop of Black power and sexual liberation. As disco conquers the mainstream, Black women and gay men rise as superstars and icons. **Repeats Wed 6/26, 3pm; Sat 6/29, 8pm, 1am; Sun 6/30, 2pm, 11pm**
- 10:00 BECOMING FRIDA KAHLO** – Part 2 of 3. *Love and Loss*. Follow Frida Kahlo and Diego Rivera's journey to America as they achieve celebrity and Frida experiences tragic losses with the death of her mother and a miscarriage, inspiring her to create some of her most powerful and iconic paintings. **Repeats Wed 6/26, 4pm**

26 Wednesday

- 8:00 DYNAMIC PLANET** – Part 2 of 4. *Fire*. With global temperatures on the rise and ecosystems destabilizing, those living and working on the frontline of change



Saturday night, June 29 on WETA PBS

The *WETA Rocks Summer Concert Series* presents more special performances: *Katy Perry: The Prismatic World Tour* (2014-2015) at 9 p.m. – and *P!nk! Live from Wembley Arena* (2006) at 10:30 p.m.



THIERRY BOYER/PARKS CANADA

Wednesday, June 26 at 10 p.m. on WETA PBS & WETA Metro
NOVA: Arctic Ghost Ship explores clues in a famous mystery: the fate of the vessels of Britain's Franklin Expedition, which had aimed to chart the Northwest Passage but went missing in 1848.

examine how science, nature, and tradition play crucial roles in preparing us for a rapidly evolving future.

Repeats Thur 6/27, 3pm; Sun 6/30, noon

- 9:00 HOPE IN THE WATER** – Part 2 of 3. *Farming the Water*. Farmed fish history is rooted in disease and environmental disasters. Discover the new science and ancient practices that may help sustainably feed our growing population. In Maine, Martha Stewart learns about scallop farming. **Repeats Thur 6/27, 4pm; Sun 6/30, 1pm**
- 10:00 NOVA: ARCTIC GHOST SHIP** – *NOVA* unravels the greatest mystery in Arctic exploration: 160 years ago, the Franklin Expedition, aiming to chart the Northwest Passage, vanished. *NOVA* is on board as a Canadian team discovers one of the lost ships. **Repeats Fri 6/28, 4pm**

27 Thursday

- 8:00 MIDSOMER MURDERS, SERIES 22: HAPPY FAMILIES** – Neil Dudgeon and Nick Hendrix star. DCI Barnaby and DS Winter are called in to investigate the death of Victor Karras, a manufacturer of exclusive board games, who appears to have been poisoned. Guest stars include Rachael Stirling (*Detectorists*).
- 9:31 MISS FISHER'S MURDER MYSTERIES, SERIES 1** – Essie Davis stars. *Episode 13 of 13. King Memses' Corpse*. Murdoch Foyle is at large and has been connected with the death of antique dealer Albert Monkton. In investigating the murder, Phryne discovers Foyle's involvement in a reincarnation cult inspired by ancient Egypt. Phryne's hunt for Foyle leads her down a difficult path.
- 10:30 BRITISH ANTIQUES ROADSHOW**

28 Friday

- 8:00 WASHINGTON WEEK WITH THE ATLANTIC** – Jeffrey Goldberg moderates the roundtable discussion of the week's top news with award-winning journalists. Visit pbs.org/washingtonweek. **Repeats Sat 6/29, 6am, 6:30pm; Sun 6/30, 11:30am; Mon 7/1, 7:30am**
- 8:30 HISTORY WITH DAVID RUBENSTEIN, SEASON 5** – *Episode 2 of 10. Richard Haass. Author of The Bill of Obligations: The Ten Habits of Good Citizens. R*
- 9:00 THE GREAT AMERICAN RECIPE** – Part 2 of 8. *Secrets and Staples. R*
- 10:00 ROOTS OF COMEDY WITH JESUS TREJO** – Part 3 of 6. *Eeland Stribling*. Trejo travels to Denver to meet a comic whose life on the river is as important as his life on stage. Wildlife biologist Eeland Stribling strives to find true life balance in the outdoors.
- 10:30 ROOTS OF COMEDY WITH JESUS TREJO** – Part 4 of 6. *Tatanka Means*. Exploring Chinle, Arizona, Jesus Trejo connects with Native American comic and actor Tatanka

WETA Magazine is published monthly by the Greater Washington Educational Telecommunications Association for its members. Three dollars of each member's dues are designated for its subscription. WETA occasionally exchanges member names with other organizations. If you wish that your name not be exchanged, please call Audience Services at 703-998-2724. ©2024 by Greater Washington Educational Telecommunications Association. All rights reserved. No part of this magazine may be reproduced in any form without written permission. Periodical postage paid at Arlington, VA 22210 and additional offices. Send address changes to WETA, 3939 Campbell Avenue, Arlington, Virginia 22206. Volume 37, Number 6. ISSN No. 1041-2700.

PRINTED ON RECYCLED PAPER



Publisher Mary Stewart
Editor Jeff Giese
Design MANIFEST LLC

Editorial and Advertising Offices
3939 Campbell Ave.
Arlington, VA 22206

Means, who delves into his own upbringing on the reservation, using humor to illuminate the enduring challenges faced by Indigenous communities nationwide.

29 Saturday

6AM-10AM See the **Saturday, June 22** listings.

10AM IT'S ACADEMIC – See 7 p.m. listing.

10:30AM-6PM See the **Saturday, June 22** listings.

6:00 PBS NEWS WEEKEND – John Yang anchors.

6:30 WASHINGTON WEEK WITH THE ATLANTIC – R

7:00 IT'S ACADEMIC – The high school quiz show showcases the academic achievements of D.C.-area students. It's the season finale! Aired 10am Saturday, repeating 7pm, and Monday, 3pm. Stream on the PBS App and at YouTube.com/wetapbs.

7:30 PBS ARTS TALK – Artists and cultural icons break down their craft and careers. *Episode 5.* Musicians Elvis Costello and Rhiannon Giddens spotlight the power of collaboration and create an improvised musical performance.

8:00 DISCO: SOUNDTRACK OF A REVOLUTION – *Part 2 of 3. Ain't No Stoppin' Us Now.* R

9:00 KATY PERRY: THE PRISMATIC WORLD TOUR – Experience the sensory explosion of eye-popping theatrics and infectious pop music tracks from the captivating performer. This performance special features hit after hit and delivers the excitement of the live Katy Perry experience. *Repeats Sun 6/30, 3pm*

10:30 PINK: LIVE FROM WEMBLEY ARENA – Join the Grammy-winning singer for a dynamic sold-out concert at London's Wembley Arena in 2006 where Pink performs her greatest hits. The concert features acrobatics, elaborate stage sets and dazzling costumes. *Repeats Sun 6/30, 4:30pm*

11:30 VARIETY STUDIO: ACTORS ON ACTORS, SERIES 19 – A series features candid conversations between contemporary star actors. *Episode 4.* Emily Blunt and Anne Hathaway; Taraji P. Henson and Jeffrey Wright; Paul Mescal and Natalie Portman. *Repeats Sun 6/30, 5:30pm*

12M FINDING YOUR ROOTS WITH HENRY LOUIS GATES, JR., SERIES 10 – *Episode 10 of 10. Viewers Like You.* R

1AM DISCO: SOUNDTRACK OF A REVOLUTION – *Part 2 of 3. Ain't No Stoppin' Us Now.* R

30 Sunday

6AM-11:30AM See the **Sunday, June 23** listings.

11:30 WASHINGTON WEEK WITH THE ATLANTIC – R

12N DYNAMIC PLANET – *Part 2 of 4. Fire.* R

1:00 HOPE IN THE WATER – *Part 2 of 3. Farming the Water.* R

2:00 DISCO: SOUNDTRACK OF A REVOLUTION – *Part 2 of 3. Ain't No Stoppin' Us Now.* R

3:00 KATY PERRY: THE PRISMATIC WORLD TOUR – R

4:30 PINK: LIVE FROM WEMBLEY ARENA – R

5:30 VARIETY STUDIO: ACTORS ON ACTORS, SERIES 19 – *Episode 4.* Emily Blunt and Anne Hathaway; Taraji P. Henson and Jeffrey Wright; Paul Mescal and Natalie Portman. R

6:00 PBS NEWS WEEKEND – John Yang anchors. *Repeats Monday, 7am*

6:30 HISTORY WITH DAVID RUBENSTEIN, SEASON 5 – *Episode 3 of 10. Craig L. Symonds. Author of Nimitz at War: Command Leadership from Pearl Harbor to Tokyo Bay.*

7:00 MISS FISHER'S MURDER MYSTERIES, SERIES 1 – Essie Davis stars. *Episode 9 of 13. Queen of the Flowers.* Phryne is chosen to refine a group of delinquent flower maidens for the annual flower parade. Then the body of one of her charges is found. As she investigates, Phryne must face her fears about losing her ward Jane.

8:00 PROFESSOR T, SERIES 3 (UK) – *Part 3 of 6. Truth and Justice.* Professor T is up in court, and he must decide whether to save himself or his former lover. Meanwhile, a prison officer is found dead and there are no shortage of suspects, but one in particular seems intent on taking the blame.

9:00 GRANTCHESTER, SERIES 9 ON MASTERPIECE – *Part 3 of 8.* Georgie and new vicar Alphie Kottaram get off on the wrong foot but soon find themselves teaming up to investigate the murder of a local landowner.

10:00 DI RAY, SERIES 2 – *Part 3 of 6.* The clock is ticking to track down an armed fugitive after another murder victim is found, and Rachita is forced to confront a familiar face from her past. Suzie begins to make inquiries into her family's affairs.

11:00 DISCO: SOUNDTRACK OF A REVOLUTION – *Part 2 of 3. Ain't No Stoppin' Us Now.* R

Via Antenna 26.3
Comcast 266/1147
Cox 801
Fios 472
RCN 38

WETA

**PBS
KIDS**

The WETA PBS Kids channel offers a safe haven for young viewers, presenting educational programming 24 hours each day, seven days a week.

WEEKDAYS ON WETA PBS KIDS

- Clifford the Big Red Dog, 6am
- Dinosaur Train, 6:30am
- Pinkalicious & Peterrific, 7am
- Sesame Street: Mecha Builders, 7:30am
- Sesame Street, 8am, 8:30am
- Work It Out Wombats!, 9am, 9:30am
- Daniel Tiger's Neighborhood, 10am, 10:30am
- Curious George, 11am, 11:30am
- Donkey Hodie, 12n, 12:30pm
- Elinor Wonders Why, 1pm
- Rosie's Rules, 1:30pm, 2pm
- Xavier Riddle and the Secret Museum, 2:30pm
- Alma's Way, 3pm, 3:30pm
- Lyla in the Loop, 4pm
- Nature Cat, 4:30pm
- Arthur, 5pm
- Odd Squad, 5:30pm
- Wild Kratts, 6pm, 6:30pm
- Lyla in the Loop, 7pm
- Molly of Denali, 7:30pm, 8pm
- Hero Elementary, 8:30pm
- Cyberchase, 9pm
- Let's Go Luna! 9:30pm
- Rosie's Rules, 10pm
- Xavier Riddle and the Secret Museum, 10:30pm
- Alma's Way, 11pm, 11:30pm

Visit weta.org/schedule for complete WETA PBS Kids listings.

WEEKDAYS ON WETA PBS, 8 AM - 3 PM

- Lyla in the Loop, 8am
- Wild Kratts, 8:30am
- Daniel Tiger's Neighborhood, 9am
- Rosie's Rules, 9:30am
- Sesame Street, 10am
- Work It Out Wombats!, 10:30am
- Donkey Hodie, 11am
- Pinkalicious & Peterrific, 11:30am
- Elinor Wonders Why, 12n
- Nature Cat, 12:30pm
- Curious George, 1pm
- Xavier Riddle & the Secret Museum, 1:30pm
- Molly of Denali, 2pm
- Alma's Way, 2:30pm



Donkey Hodie

SUNDAYS ON WETA PBS, 6 AM - 9 AM

- Mister Rogers' Neighborhood, 6am
- Arthur, 6:30am
- Molly of Denali, 7am
- Alma's Way, 7:30am
- Lyla in the Loop, 8am
- Wild Kratts, 8:30am



Via Antenna 26.2
Comcast 265, 1146
Cox 800
Fios 474
RCN 39, 602

British Television at Its Best

The WETA UK channel is devoted to the best in British television programming, presenting beloved classics and contemporary series around the clock, seven days a week. WETA UK offers a full schedule of fine entertainment programming – featuring drama, mystery and comedy – in addition to documentary series and news reports.

JUNE P.M. PROGRAMMING ON WETA UK

VISIT WETA.ORG/SCHEDULE FOR A PROGRAM LINEUP

	SUNDAY	MONDAY	TUESDAY	WEDNESDAY	THURSDAY	FRIDAY	SATURDAY
12pm	• Ireland's Wild Coast • Midsomer Murders, Series 5 (starts 6/9)	Call the Midwife	Call the Midwife	Call the Midwife	Call the Midwife	Call the Midwife	Celebrity Antiques Roadshow
12:30pm							
1pm	Grantchester, Series 5 on Masterpiece (Series 6 starts 6/16)	Born and Bred	Born and Bred	Born and Bred	Born and Bred	Born and Bred	Last Tango in Halifax, Series 1 & 2
1:30pm							
2pm	Doc Martin, Series 7	• 6/3: The Real Crown: Inside the House of Windsor, Pts 1-3 • 6/10, 2-4pm: The Real Crown, Pts 4-5 • 6/10, 4pm: In Their Own Words: Princess Diana • 6/17: L. Worsley's Royal Myths & Secrets (Elizabeth I/ Anne/Marie Antoin.) • 6/24: L. Worsley's Royal Myths (Henry VIII/Richard III/ Romanovs)	Last Tango in Halifax, Series 1 & 2	• Foyle's War, Series 6 (6/5) • Agatha Christie's Poirot (starts 6/19)	Doc Martin, Series 7	• 6/7, 2-4pm: The Real Crown, Pts 4-5 • 6/7, 4pm: In Their Own Words: Princess Diana • 6/14: L. Worsley's Royal Myths & Secrets (Elizabeth I/ Anne/Marie Antoin.) • 6/21: L. Worsley's Royal Myths (Henry VIII/Richard III/ Romanovs) • 6/28: Agatha Christie: Lucy Worsley on the Mystery Queen	Annika, Series 1 on Masterpiece
2:30pm							
3pm	• Miss Fisher's Murder Mysteries, Series 1 • DI Ray, Series 1 (starts 6/30)	Annika, Series 1 on Masterpiece	Luisa Spagnoli: Queen of Chocolate	Midsomer Murders, Series 4 & 5	Agatha Christie's Poirot, Series 3	Flesh and Blood; MaryLand on Masterpiece (starts 6/8); DI Ray, Series 1 (starts 6/29)	• Foyle's War, Series 6 (6/1) • Doc Martin, Series 7
3:30pm							
4pm	All Creatures Great and Small, Series 4 on Masterpiece	• MaryLand on Masterpiece • DI Ray, Series 1 (starts 6/25)	Seaside Hotel, Series 7 & 8	BBC News: The Context	BBC News: The Context	BBC News: The Context	All Creatures Great and Small, Series 4 on Masterpiece (6:30pm as of 6/8)
4:30pm							
5pm	Foyle's War, Series 6 (Series 1 starts 6/9, 90 min.)	BBC News: The Context	BBC News: The Context	BBC News: The Context	BBC News: The Context	BBC News: The Context	World on Fire, Series 2 (7:30pm as of 6/8); Guilt, Series 1 (starts 6/29)
5:30pm							
6pm	• Foyle's War, Series 6 (6/2) • Doc Martin, Series 7 (6:30pm as of 6/9)	Still Open All Hours	Still Open All Hours	Still Open All Hours	Still Open All Hours	Still Open All Hours	Miss Fisher's Murder Mysteries, Series 1 (8:30pm as of 6/8)
6:30pm							
7pm	• Flesh and Blood on Masterpiece (6/1) • British Antiques Roadshow (starts 6/9, 7:30pm)	Celebrity Antiques Road Trip	Celebrity Antiques Road Trip	Celebrity Antiques Road Trip	Celebrity Antiques Road Trip	Celebrity Antiques Road Trip	Midsomer Murders, Series 4 & 5 (9:30pm as of 6/8)
7:30pm							
8pm	• 6/2: The Real Crown: Inside the House of Windsor, Pts 1-3 • 6/9, 8-10pm: The Real Crown, Pts 4-5 • 6/9, 10pm: In Their Own Words: Princess Diana • 6/16: L. Worsley's Royal Myths & Secrets (Elizabeth I/ Anne/ Marie Antoinette) • 6/23: L. Worsley's Royal Myths (Henry VIII/Richard III/ Romanovs) • 6/30: Agatha Christie: Lucy Worsley on the Mystery Queen	Last Tango in Halifax, Series 1 (Series 2 starts 6/17)	Foreign Favourites • 8pm: Luisa Spagnoli: Queen of Chocolate (starts 6/4) • 9pm: Seaside Hotel, Series 7 (Series 8 starts 6/11) • 10pm: Luna and Sophie, Series 2	Doc Martin, Series 7	• 6/6, 8-10pm: The Real Crown: Inside the House of Windsor, Pts 4-5 • 6/6, 10pm: In Their Own Words: Princess Diana • 6/13: L. Worsley's Royal Myths & Secrets (Elizabeth I/ Anne/Marie Antoin.) • 6/20: L. Worsley's Royal Myths (Henry VIII/Richard III/ Romanovs) • 6/27: Agatha Christie: Lucy Worsley on the Mystery Queen	Masterworks Showcase • 8pm: Foyle's War, Series 1 (starts 6/7) • 9:30pm: All Creatures Great and Small, Series 4 on Masterpiece • 10:30pm: World on Fire, Series 2 on Masterpiece • 10:30pm: Guilt, Series 1 on Masterpiece (starts 6/28)	Maggie Murders on Masterpiece (6/1) • British Antiques Roadshow (starts 6/8, 10:30pm)
8:30pm							
9pm	Annika, Series 1 on Masterpiece	Annika, Series 1 on Masterpiece	Annika, Series 1 on Masterpiece	Midsomer Murders, Series 4 (Series 5 starts 6/12)	Midsomer Murders, Series 4 (Series 5 starts 6/12)	Midsomer Murders, Series 4 (Series 5 starts 6/12)	Midsomer Murders, Series 4 (Series 5 starts 6/12)
9:30pm							
10pm	• MaryLand on Masterpiece (starts 6/3) • DI Ray, Series 1 (starts 6/24)	• MaryLand on Masterpiece (starts 6/3) • DI Ray, Series 1 (starts 6/24)	• MaryLand on Masterpiece (starts 6/3) • DI Ray, Series 1 (starts 6/24)	Agatha Christie's Poirot, Series 3	Agatha Christie's Poirot, Series 3	Agatha Christie's Poirot, Series 3	Agatha Christie's Poirot, Series 3
10:30pm							
11pm	Still Open All Hours	BBC News	BBC News	BBC News	BBC News	BBC News	BBC News
11:30pm							
	SUNDAY	MONDAY	TUESDAY	WEDNESDAY	THURSDAY	FRIDAY	SATURDAY

WETA UK Highlights

Foyle's War

See it from the beginning!

Fridays at 8 p.m. starting June 7 on WETA UK

WETA UK presents popular mystery series *Foyle's War* right from the beginning, presenting Series 1 of the beloved 28-episode drama created by *Midsomer Murders* screenwriter and author Anthony Horowitz. Michael Kitchen stars as DCI Christopher Foyle, the dogged police detective who fights his own battles on the home front in England during and after World War II. As the drama opens, the quietly enigmatic policeman would rather be serving in the armed forces, but his superiors deem him indispensable for combating crime along England's south coast, facing invasion by the German army. Uncertainty, espionage, bombs, internment and murder are the facts of life for Foyle and those around him. The cases feature Foyle's driver Sam Stewart (Honeysuckle Weeks), eager to apply her amateur sleuthing skills, and Foyle's assistant, DS Paul Milner (Anthony Howell), who was wounded in action in Norway. Stream Series 1-5 with WETA Passport starting June 1.



Luisa Spagnoli: Queen of Chocolate

Tuesdays at 8 p.m. starting June 4 on WETA UK

What do the 1920s, world-famous chocolate, angora rabbits and high-end tailoring have in common? One woman: Luisa Spagnoli (1877-1935). Curated international drama series *Walter Presents* features a drama exploring the life and work of the famed Italian businesswoman. Driven by remarkable entrepreneurial spirit and extraordinary creativity and modernity, Spagnoli made her mark in an environment unfriendly to powerful, visionary women. The chocolatier who created the company Perugina and introduced its famed line of hazelnut *Baci*, she also pioneered the use of angora wool in fashion garments. The four-part series *Luisa Spagnoli: Queen of Chocolate* is presented in Italian with English subtitles.



DI Ray, Series 1

Mondays at 10 p.m. starting June 24 on WETA UK

As Series 2 of crime drama *DI Ray* premieres on WETA PBS this month, WETA UK presents Series 1 starting June 24. In the four-part drama starring Parminder Nagra, when policewoman DI Rachita Ray is offered a promotion to the Birmingham police force's homicide team, she's ready to step up, but her excitement is tempered when her boss, DCI Kerry Henderson, briefs her on her case, a CSH ("culturally specific homicide") — the suspected honor killing of a Muslim man. She realizes the suspects can't be guilty: the evidence from a British Hindu family is flimsy at best. Her attempts to convey this to her superiors and colleagues fall on deaf ears and hidden biases. Their keenness to wrap up the case signals that no one is listening to her. That is, until her probing leads the team to additional sinister crimes.

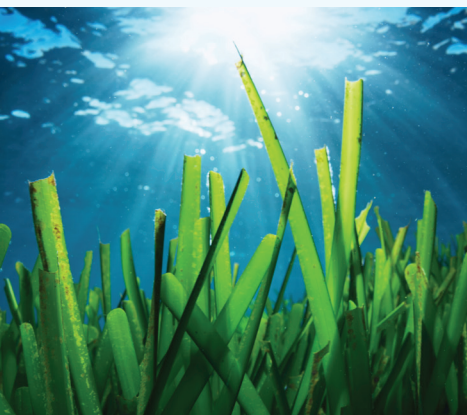


Also on WETA UK in June: Tune in to history series *Lucy Worsley's Royal Myths & Secrets*, Thursdays, June 13 & 20, 8-11 p.m.; drama *Seaside Hotel, Series 8*, Tuesdays at 9 p.m. starting June 11; and food-filled road-trip series *Donal's Irish Adventure*, Fridays at 6:30 p.m. starting May 31.

WETA Metro is the streaming and broadcast television channel that features popular PBS programming and engaging content curated for our local audience, including offerings spotlighting the Metro D.C. community. The channel is simulcast with WETA PBS most evenings. Each day on WETA Metro, enjoy local programs, news and public affairs offerings (such as *PBS NewsHour*, weekdays at 6 p.m./11 p.m.), and lifestyle and cultural shows.

VISIT [WETA.ORG/SCHEDULE](https://weta.org/schedule) FOR A COMPLETE PROGRAM LINEUP

Stream at weta.org/livestream or via the PBS App



BBC STUDIOS

The Green Planet

Wednesday, June 5, 8-11 p.m. on WETA Metro

Hosted by Sir David Attenborough, and created in partnership with BBC Studios' Natural History Unit, the 2022 documentary series *The Green Planet* spotlights Earth's biodiversity through the story of plants. WETA presents three episodes: *Tropical Worlds*, *Water Worlds* and *Seasonal Worlds*. The series uses pioneering new filmmaking technology and the latest science, featuring Attenborough travelling the globe to reveal plants' strange and wonderful world. Living secret, unseen lives, plants are often overlooked, yet they are as aggressive, competitive and dramatic as animals — locked in life-and-death struggles for food and light, territory and more.



HARVARD (JOHN LINDBQUIST RIGHTS)

American Masters: Ailey

Saturday, June 1 at 9 p.m. on WETA Metro

As part of a slate of LGBTQ+ Pride Month programming — learn more at weta.org/pridemonth (and on page 4) — WETA features the *American Masters* biography *Ailey*, exploring the life and impact of brilliant choreographer and dancer Alvin Ailey (1931-1989), a trailblazing pioneer who founded his influential studio Alvin Ailey American Dance Theater in 1958 at age 27. Raised by a single mother, Ailey in interviews recounts the hardships of his childhood along with memories of blues and gospel music, juke joints, church, young love, and the awakening of his gay identity. Throughout his life he endured racism, homophobia, addiction, and mental illness, but he found salvation through dance. In 1989, Ailey tragically succumbed to an AIDS-related illness. Stream the film on the PBS App.



COURTESY AMERICAN PUBLIC TELEVISION

Roots of Comedy with Jesus Trejo

Fridays at 10 p.m. starting June 21
on WETA Metro (& WETA PBS)

A new stand-up comedy documentary series explores how humor mirrors society's complex social issues, showcasing six comedians located in diverse regions across the U.S., telling the stories behind the laughs. The six 30-minute episodes of *Roots of Comedy with Jesus Trejo* — part comedy, part social commentary, part travelogue — follow the host, an L.A.-based Mexican American comedian, as he embarks on an odyssey that reveals how the most memorable comedy traces back to the roots of a community. Along his journey, Trejo meets with rising talents who explore the mosaic of our nation through the lens of stand-up comedy.

The WETA World channel is a 24/7 news and public affairs service devoted to fact-based nonfiction programming, sharing broad perspectives, stories and ideas. WETA World informs and educates, presenting award-winning documentaries and domestic and international news broadcasts. The channel features a slate of original programs that examine issues with a diversity of voices and illuminate conflicts, movements and cultures around the globe.

VISIT WETA.ORG/SCHEDULE FOR A COMPLETE PROGRAM LINEUP

Now stream WETA World at weta.org or via the PBS App!

America ReFramed: Como Vivimos

Thursday, June 13 at 8 p.m. on WETA World

In California's Central Valley, hundreds of Mexican American youths miss months of school annually because they live with their families in one of the state's farmworker housing centers. These subsidized apartments, one of the few affordable housing options available to farmworking families, are only available for residence during the several months of the growing season. They require residents to move out each winter and relocate at least 50 miles away before being allowed to return in the spring; many move away for the off-season. *Como Vivimos* (*How We Live*) spends a year following the students and their families, exploring the toll of these cycles of displacement.



COURTESY GBH

American Experience: Stonewall Uprising

Saturday, June 1 at 8 p.m. on WETA World

WETA World presents a wide array of programs marking LGBTQ+ Pride Month in June (see page 4 to learn more), including a documentary film that explores a major turning point in the modern gay civil rights movement. On June 28, 1969, police raided the Stonewall Inn (right), a popular gay bar in New York City's Greenwich Village, and violent protests erupted that lasted for six days and came to be known as the Stonewall Riots. Based on David Carter's book "Stonewall: The Riots that Sparked the Gay Revolution," and told through interviews with Stonewall patrons, reporters, and the policeman who led the raid, *Stonewall Uprising* recalls the fervently hostile climate in which the gay community lived in that era.



NEW YORK TIMES/REDFUX COURTESY GBH

Can You Bring It: Bill T. Jones and D-Man in the Waters

Friday, June 14 at 8:30 p.m. on WETA World

WETA World reprises Rosalynde LeBlanc and Tom Hurwitz's 2023 study of eminent choreographer-dancer-director Bill T. Jones' ballet masterpiece *D-Man in the Waters*. The film, which airs on the series *AfroPop: The Ultimate Cultural Exchange*, in May won a Peabody Award for its exploration of the groundbreaking 1989 work of art — which emerged in the age of AIDS and gave physical manifestation to the fear, anger, grief, and hope for salvation that Jones and colleagues experienced as the disease took the life of their troupe's beloved co-founder and other members. In the program, decades later, dance professor LeBlanc — along with Jones himself — works to bring the ballet to life again with contemporary students born after the height of the global health crisis.



COURTESY GBH/WORLD CHANNEL

Choral Showcase: Remembering Ozawa

Sundays June 2, 9 & 23 at 9 p.m.

Seiiji Ozawa (1935-2024), one of our era's greatest conductors, passed away in February in Tokyo, and WETA Classical's *Choral Showcase* pays tribute to the maestro this month with three of his performances with the Boston Symphony, the orchestra he led for 29 years. In 1969, Ozawa and the BSO made what is still considered a reference recording of Carl Orff's *Carmina Burana*, which *Choral Showcase* presents on June 23. One of the famed orchestra's great strengths was the French repertoire, and on June 9, from 1993, we will hear the *Grande Messe des morts*, "The Requiem Mass" by Hector Berlioz. And on June 2, from 1981, we present Gustav Mahler's Symphony No.8, "Symphony of a Thousand," recorded with the Tanglewood Festival Chorus. In addition, this month *Choral Showcase* honors Juneteenth with works by Margaret Bonds and Trevor Weston on June 16, and on June 30 we present an oratorio for the end of time in *The Book with Seven Seals* by Austrian composer Franz Schmidt.



Seiji Ozawa

PETER SCHAAF BSO ARCHIVES

Wolf Trap Chamber Music on *Front Row Washington*

Monday, June 3 at 9 p.m.



CHAMBER MUSIC AT THE BARNES AT WOLF TRAP

It has been an exciting season on *Front Row Washington* as each month we have featured one of the most celebrated concert series in the area, Chamber Music at the Barns at Wolf Trap. We have heard a wide variety of music by past and living composers in these performances curated by Wolf Trap Artistic Advisor Wu Han. The final performance for this season — on our June 3 broadcast — explores the music of Chopin with the Chamber Music Society of Lincoln Center. Pianists Michael Brown and Gloria Chien perform several of Chopin's solo works for piano, and they also join together with Cho-Liang Lin (violin) and Nicholas Canellakis (cello) on chamber works that include one of Chopin's early compositions. Join host John Banther for *Front Row Washington*.

NSO Showcase: Dvořák, Mahler and Strauss

Wednesday, June 5 at 9 p.m.



GILJIAN DIESEN

Soprano Katerina Burton

This month at the John F. Kennedy Center for the Performing Arts, the National Symphony Orchestra will present Verdi's *Otello* in concert opera format. WETA Classical's June *NSO Showcase* program will reflect this operatic theme, presenting Dvořák's *Othello Overture* with Joseph Young conducting. Also on the bill is Mahler's *Symphony No.4*, conducted by NSO Music Director Gianandrea Noseda, with its heavenly fourth movement sung by soprano Katerina Burton — a recent graduate of the Cafritz Young Artist program at Washington National Opera (and a Juilliard graduate who also earned a degree in vocal performance from Maryland's Towson University). The program will close with a suite from Richard Strauss' opera *Der Rosenkavalier*, conducted as well by Noseda.

Classical for Washington

Wolf Trap Opera Broadcasts Return to Opera Matinee

Saturdays, June 15 & 22 at 1 p.m.
on WETA Classical

By Linda Carducci

Upon the conclusion of the Metropolitan Opera season on June 8, WETA Classical continues its tradition of presenting local performances from Wolf Trap Opera — this month presenting two recorded productions from the company’s 2023 season at The Barns.

Wolf Trap Opera (WTO) is a summer residency program of Wolf Trap Foundation for the Performing Arts, designed to offer emerging professional singers performance experience and career development. WTO selects its artists from among the best emerging classical vocalists in the country and places them in repertoire that showcases their talent.

George Frideric Handel’s *Semele* airs on WETA Classical’s opera showcase *Opera Matinee* on **June 15**. Handel composed *Semele* in 1744 as a secular *oratorio* — a musical form more typically based on sacred text. Today, this Handel work is often performed as a fully staged opera, as it was by WTO.

The story is based on a Roman myth of the mortal and pleasure-seeking Semele, who enters into an affair with the Roman god Jupiter. Her vanity and ambition drive her to demand that Jupiter transform her into an immortal goddess. Jupiter’s wife, the goddess Juno, seeks revenge on the lovers. Using deceit and disguise, Juno advises Semele to force Jupiter to comply with Semele’s wish, which leads to Semele’s destruction. From Semele’s ashes arose Bacchus, the god of wine and merriment.

When *Semele* premiered in London’s Covent Garden during the Lenten period of 1744, it was greeted with puzzlement by the audiences — a *secular* oratorio composed during a period when Handel primarily wrote *sacred* oratorios, and one evincing themes of desire, adultery and revenge. *Semele* was staged only four times and then neglected until its revival in the 20th century. It is now widely performed and recorded by world-class artists, owing to Handel’s transcendent orchestration and heavenly melodies, including the beautiful tenor aria “Where’er You Walk.” This WTO production showcases Esther Toney in the title role and Lunga Eric Hallam as Jupiter.

Charles Gounod’s *Faust* airs June 22 on *Opera Matinee*. The Faust legend is well-known: an aging scholar, depressed and disillusioned with life, makes a deal with Mephistopheles, an agent of the Devil, to sell his soul in exchange for earthly pleasures in the form of power, knowledge, wealth or youth. Variations on the base story have emerged through the ages, but the seductive theme has endured and inspired a multitude of

musical, literary and cinematic works, chief among them the play *Faust* by Goethe.

Gounod’s *Faust* centers on the protagonist’s covenant with Mephistopheles and the resulting ill-fated romance between Faust and the young Marguerite. Events cascade into tragedy that leaves Marguerite the innocent victim of Faust’s nefarious pact. Yet Marguerite ultimately emerges victorious in an ending that Gounod, a deeply religious man, composed to convey the radiance of salvation. *Faust* is considered to be the composer’s masterpiece.

WTO’s production of *Faust* features Eric Taylor, William Clay Thompson and Brittany Logan in principal roles.



Semele

KEN HOWARD



Faust

SCOTT SUCHMAN

WETA Passport

Stream *Masterpiece* dramas and much more with WETA Passport, our popular member benefit that provides you with access to an extensive library of the best public television programs! You're ready to activate now at pbs.org/passport if you see a four-word activation code above your name and address at left; or go to weta.org/passport to make your qualifying donation of \$60 (or \$5 monthly) to start enjoying WETA Passport today.

ADVERTISEMENT

STEP **AFRIKA!**

THE MIGRATION

REFLECTIONS ON JACOB LAWRENCE



JUNE 7 – JULY 14

Photo by Jati Lindsay.



TICKETS ON SALE NOW!

[ARENASTAGE.ORG/MIGRATION](https://arenastage.org/migration) | 202-488-3300

**arena
stage**
the mead center
for american theater