

AUGUST 2023  
MAGAZINE FOR MEMBERS

# WETA



*Classical Music for  
Greater Washington  
and the Nation*

Plus Performance Specials and Drama Marathons on WETA PBS

# WETA Focus



**O**ur classical music service, WETA Classical, offers indispensable programming to the community of Greater Washington and to the nation, presenting vibrant radio broadcasts and digital streams that are a cherished destination for all who love the art form. This profoundly expressive music, in all its considerable power and beauty, is a vital part of the cultural life of our community and our world.

I invite you to bring classical music into your day. Take advantage of all that WETA Classical and our all-vocal classical music service WETA VivaLaVoce have to offer. Enjoy and celebrate the music with us, from selections presented around the clock with expert curation by our superb announcers, programmers and producers — to special programming devoted to choral, operatic and symphonic works; local performance; and emerging talents. We strive to serve a wide range of classical music interest, from that of the devotee to the listener newly

experiencing the music's manifold joys, solaces and inspirations.

We enthusiastically embrace our mission to extend and expand appreciation of classical music, to offer entrée to the art form, and to broaden accessibility to it. Our rich classical music online offerings and educational resources — including the podcast *Classical Breakdown*, informative music news and events blog *Classical Score*, and introductory *Take Note!* site — illuminate the music, the composers, and performing artists and their artistry. Explore and learn more at [wetaclassical.org](http://wetaclassical.org); and tune in or stream our outstanding music offerings.

Just as we present classical music in our WETA Classical radio service, so too do we spotlight the art form in our WETA PBS and WETA Metro television programming. This month, watch for classical music concerts on the series *Great Performances* — highlighted in the pages that follow — including an exciting annual summer night concert filmed in Vienna, Austria.



WETA proudly serves Greater Washington with informative, entertaining programming that we create specifically for area viewers. As part of our mission of service to our community, we have been investing in our local television productions and web video content to spotlight the people, places and arts that make the national capital area such a wonderful place to live. We are delighted that audiences have responded with warm praise, and it is my pleasure to share news of accolades for our local content.

In late June, our house-hunting and neighborhood series *If You Lived Here*, restaurant series *Signature Dish*, arts showcase *WETA Arts*, and web-based video series *Boundary Stones History Shorts* won a total of five Capital Emmy Awards. I congratulate the WETA staff members who received the honors — and all at WETA who work to bring to the public this engaging content.

I thank you, our members, for your generous support, which makes possible all that we do on behalf of our community. We are very proud to be your hometown public media station.

*Sharon Percy Rockefeller*

Sharon Percy Rockefeller  
President and Chief Executive Officer, WETA

## WETA – ON THE AIR & ONLINE

### WETA PBS

26.1 via antenna  
Comcast 26, 219, 800, 1026  
Cox 26, 1003, 1026  
DirecTV 26, 26-1, Stream  
Dish 8076 Fios 26, 526  
RCN 26, 613

### WETA Metro

26.5 via antenna  
[weta.org/livestream](http://weta.org/livestream)  
PBS App  
YouTube TV  
Comcast 270, 1148  
Fios 470 RCN 599

### WETA UK

26.2 via antenna  
Comcast 265, 1146  
Cox 800  
Fios 474  
RCN 39, 602

### WETA World

26.4 via antenna  
Cox 802  
Fios 475  
RCN 37

# ICONIC AMERICA

## OUR SYMBOLS AND STORIES

### WITH DAVID RUBENSTEIN

**WETA co-production continues Tuesday, August 1 at 10 p.m.  
on WETA PBS & WETA Metro; streams on the PBS App**

**S**eaSon 1 of the American history series *Iconic America: Our Symbols and Stories with David Rubenstein*, a WETA co-production, concludes with an August 1 episode that illuminates another of the nation's icons. In this program, ***The Golden Gate Bridge***, learn about the engineering marvel that symbolizes America's can-do spirit and explore whether we as a nation can still undertake such bold projects. The program repeats Saturday, August 5 at 7 p.m. and 11 p.m. on WETA PBS.

Guiding *Iconic America* is David Rubenstein — co-founder of The Carlyle Group, patriotic philanthropist, lifelong student of history, author, and the series' host and executive producer. A proponent of civics and history education in the United States, Rubenstein visits special places around the country in *Iconic America* to meet and engage with historical thinkers, community members, and subject matter experts. Together, they consider each symbol and its story, how its meaning has changed over time, and how Americans identify with it.

The *Iconic America* project includes a robust educational component beyond the broadcasts, encouraging people of all ages to explore local history. The project is providing nationwide teacher trainings, virtual tours for classrooms, and expertly crafted lesson plans. Visit the project's website at [pbs.org/iconicamerica](https://pbs.org/iconicamerica); engage with the series on social media using the hashtag #IconicAmericaPBS; and join the Iconic America Reading Challenge via hashtag #IconicBookChallenge. *Iconic America: Our Symbols and Stories with David Rubenstein* is a production of Show of Force, DMR Productions, and WETA.

Funding for *Iconic America: Our Symbols and Stories with David Rubenstein* is provided by The Zohar and Lisa Ben-Dov Family through the Luminescence Foundation.



## WETA launches *ReadingUniverse.org*

### New website from WETA Learning Media aids educators

**J**ust in time for back-to-school, WETA, trusted producer of award-winning educational digital media, has launched the new website ***ReadingUniverse.org*** in partnership with The Barksdale Reading Institute and First Book. Reading Universe offers an authoritative, step-by-step pathway for teachers to understand the latest insights for teaching reading and writing — and then translate them into classroom practice. Research-based, engaging, and video-rich, Reading Universe offers comprehensive guides to teaching reading skills as well as quick, concrete answers for common challenges, with a particular focus on teaching student groups who are often overlooked. The resource-laden site — featuring lesson plans, in-classroom videos, printable activities, and more — reflects input from some of the most knowledgeable and influential voices in the field of education. Reading Universe is deeply grounded in the experience of the Barksdale Reading Institute, which contributed to dramatically improved reading instruction in the state of Mississippi.

WETA adds *ReadingUniverse.org* to its unparalleled portfolio of literacy services for educators and families, including *ReadingRockets.org*, *ColorínColorado.org*, *LDOOnline.org*, and *AdLit.org*.

Reading Universe is made possible by generous support from Jim & Donna Barksdale, the American Federation of Teachers, the Emily Hall Tremain Foundation, and two anonymous donors.

**For program and membership inquiries, visit [weta.org](https://weta.org) or call 703-998-2724.**

#### WETA PBS Kids

26.3 via antenna  
Comcast 266, 1147  
Cox 801  
Fios 472  
RCN 38

#### WETA Online

[weta.org](https://weta.org)  
[weta.org/passport](https://weta.org/passport)  
[weta.org/pbsapp](https://weta.org/pbsapp)  
[weta.org/learningmedia](https://weta.org/learningmedia)

#### WETA Classical

WETA 90.9 FM Washington, D.C.  
WGMS 89.1 FM Hagerstown  
[wetaclassical.org](https://wetaclassical.org)  
[vivalavoce.org](https://vivalavoce.org)  
WETA Classical App





## Agatha Christie's Marple

Saturday, August 12, noon-6 p.m.

on WETA PBS

**W**ETA PBS reprises classic episodes of *Agatha Christie's Marple*, featuring one of the famed crime author's shrewdest, most observant and most perceptive sleuths, Miss Marple. Geraldine McEwan portrays Marple as sprightly and mischievous; she watches, she listens, she knits — and ultimately she cracks the case before anyone else.

• **By the Pricking of My Thumbs** — Saturday, August 12 at noon, repeating Sunday, August 13 at 9:30 p.m.

Miss Marple collaborates with detectives Tommy and Tuppence Beresford (played by Anthony Andrews and Greta Scacchi) to probe suspicious behavior and a death at the nursing home of the Beresfords' elderly aunt.

• **The Sittaford Mystery** — Saturday, August 12 at 2 p.m., repeating Sunday, August 20 at 9:30 p.m. Sitting out a blizzard at a remote mansion, Marple is on hand when the night turns deadly. Timothy Dalton portrays the estate owner, eminent politician Clive Trevelyan. Patricia Hodge, Carey Mulligan and Laurence Fox also guest star.

• **At Bertram's Hotel** — Saturday, August 12 at 4 p.m. Marple notes an atmosphere of danger while staying at a posh London hotel, as fellow guests gather for the reading of a wealthy man's will. Guest stars include Francesca Annis, Ed Stoppard and Mark Heap.



Anne Marie, aged 10, throwing bottles at British troops during a Belfast riot, 1981.

COURTESY ©PETER MARLOW/MAGNUM PHOTOS

## Once Upon a Time in Northern Ireland

10 p.m. Monday; 9 p.m. & 10 p.m. Tues.-Wed.,

August 28-30 on WETA PBS;

binge-watch with WETA Passport

**A** powerful five-part series explores the decades-long conflict in Northern Ireland known as "The Troubles." The series from the makers of the BAFTA and Emmy Award-winning series *Once Upon a Time in Iraq* (which aired as a *Frontline* special in 2020) tells the story through the intimate testimony of ordinary men, women and children on all sides of the conflict who were drawn, both willingly and unwillingly, into the

bitter clashes that rocked Northern Ireland and who are still struggling to hold on to a fragile peace. The programs from director James Bluemel and the BBC combine personal accounts with archival footage to explore the story of the people and communities that had to live with conflict daily — and are still contending with its legacies today.

Following years of negotiations between politicians, paramilitaries and the British and Irish Governments, IRA and loyalist paramilitaries announced a ceasefire in 1994; and there was widespread joy when the Good Friday Agreement was finally announced four years later, but peace came at a cost. The early release of all paramilitary prisoners from prison — a key part of the agreement — caused anguish for many, especially the injured and bereaved, who faced what all post-conflict societies face — a peace built upon the violence of the past. *Once Upon a Time in Northern Ireland* runs chronologically from the beginning of The Troubles in the late 1960s to the Belfast/Good Friday Agreement signed 25 years ago in April 1998. The series also airs on WETA Metro.



## What to Do When Someone Dies

Sunday, August 27, 8-11 p.m. on WETA PBS;

binge-watch with WETA Passport

**I**n this three-part, three-hour British drama based on a bestselling 2009 novel by Nicci French, Anna Friel stars as schoolteacher Ellie Manning, a wife who is devastated to learn that her beloved husband Greg — portrayed by Marc Warren (*Van der Valk* on *Masterpiece*; *Hustle*) — has died in a car accident with a mystery woman in the passenger seat. Stricken with grief and refusing to believe her husband was having an affair, Ellie sets out to make sense of his death and to learn the truth of who the woman was and why she was in the car. Finding out what happened will be a journey of discovery — and danger.

SALLY HEAD PRODUCTIONS/PBS



## Drama Marathons: *Sanditon*, Series 3 on Masterpiece & *Doc Martin*, Series 9

**Sundays, August 13, 20 & 27 on WETA PBS;  
binge-watch with WETA Passport**

**W**ETA presents a marathon airing of two popular dramas, featuring all six Season 3 episodes — back-to-back — of *Masterpiece* drama *Sanditon*, as well as all eight Season 9 episodes of *Doc Martin*.

• ***Sanditon*, Series 3 on Masterpiece** — **Sunday, August 13, 10:30 a.m.-6 p.m.**

Based on Jane Austen's unfinished last novel set in early 1800s England, Season 3 completes the stories of heroines Charlotte Heywood (Rose Williams) and Georgiana Lambe (Crystal Clarke). The first two seasons raised and dashed matrimonial prospects for the two women. Although Charlotte's father expects her to marry a local farmer, she has attracted several eligible bachelors in the resort town of Sanditon. Lambe, an heiress, can't trust her own suitors because they may only be seeking her fortune. The two women bond over courtship dilemmas and resolve to forge their own destinies.

• ***Doc Martin*, Series 9** — **Sunday, August 20, 11 a.m.-6 p.m., 7-8 p.m., repeating Sunday, August 27, 6 a.m.-2 p.m.** British drama *Doc Martin* stars Martin Clunes as titular character Dr. Martin Ellingham, the socially challenged physician serving the small coastal Cornwall village of Portwenn. In Season 9, after a disaster with a patient, Martin must face the judgment of the General Medical Council, which assesses his fitness to continue practicing medicine. Meanwhile, Martin's wife, Louisa Ellingham (Caroline Catz), has resigned from her job as headmistress at the local school to pursue a new career in child counseling. Martin's formidable Aunt Ruth (Dame Eileen Atkins); Bert Large (Ian McNeice) and his son Al (Joe Absolom); the doctor's receptionist Morwenna (Jessica Ransom); PC Joe Penhale (John Marquez); and pharmacist Mrs. Tishell (Selina Cadell) all figure into the storyline.

**Drama and mystery fans take note!** Popular Sunday-night series return this fall with new seasons! Starting September 3 are *Van der Valk*, **Series 3 on Masterpiece**; *Professor T*, **Series 2** (UK version with Ben Miller); and *Unforgotten*, **Series 5 on Masterpiece**. In mid-October, watch for *Hotel Portofino*, **Series 2**; *World on Fire*, **Series 2 on Masterpiece**; and *Annika*, **Series 2 on Masterpiece**.



COURTESY AMERICAN PUBLIC TELEVISION

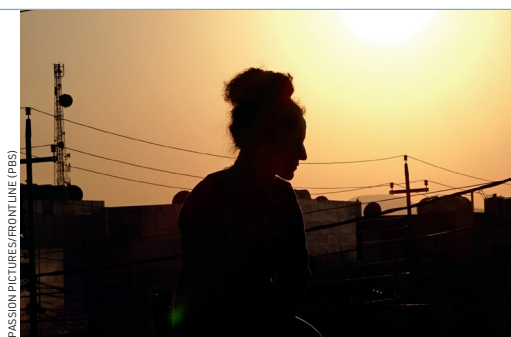


BUFFALO PICTURES/ALL3MEDIA LIMITED

## Frontline: Inside the Iranian Uprising

**Tuesday, August 8 at 10 p.m.  
on WETA PBS & WETA Metro**

**I**nvestigative journalism series *Frontline* goes inside the Iranian Uprising with gripping eyewitness accounts in a new program this month. Last fall, anti-government protests swept across Iran after the death in police custody of a young woman, Mahsa Zhina Amini, who was accused of not adhering to the Islamic regime's strict dress code. In the crackdown on protests that followed, human rights groups estimate that more than 500 Iranians have been killed, including 72 children. In a country where journalists are tightly controlled, young Iranians have been filming the uprising themselves and posting the videos online. For more than six months, *Frontline* has been gathering and reviewing more than 100 hours of this footage, cross-checking it with testimony from eyewitnesses and protestors, and following activists and exiles who have been gathering evidence of human rights violations. The resulting documentary presents the harrowing stories of protestors, some of whom are still in the country and are speaking out despite the risks, and it sheds new light on the lengths to which the regime of Ayatollah Ali Khamenei has gone to put down the uprising. "The people are now like a volcano," one interviewee says. "I am a volcano." The documentary traces how the protests began in the Kurdish parts of Iran and spread throughout the country — and how the authorities responded with force.



PASSION PICTURES/FRONTLINE (PBS)



## Johnny Cash: Man in Black – Live in Denmark 1971

Wednesday, August 16 at 8 p.m.

on WETA PBS

A special program features one of country music's greatest icons in concert with guests June Carter Cash, Maybelle Carter, Carl Perkins and the Statler Brothers. The 1971 performance in Europe spotlights the great singer-songwriter and his road company before an audience that delighted in the country, rockabilly, American roots music, and spirituals of the evening's repertoire, with the "Man in Black" backed by his airtight backup band, the Tennessee Three. The concert features June

Carter Cash in three duets with her husband, including "If I Were a Carpenter." The legendary Maybelle Carter — June's mother, Cash's mother-in-law, and matriarch of the First Family of Country Music — is also on hand to perform, as are her other talented daughters, Anita and Helen. Also among the star-studded lineup are Carl Perkins, the rockabilly eminence of "Blue Suede Shoes" immortality, and the Statler Brothers, much loved for their off-the-wall humor and homespun four-part harmonies.

Learn about Johnny Cash (and the Carters and many other artists) in the Ken Burns film *Country Music*, a WETA and Florentine Films co-production that continues on Saturdays, August 5 and 26 at 8 p.m. and streams with WETA Passport. The country music artist is a throughline in the music history series.

## Kenny Rogers Live in Concert

Saturday, August 12 at 10:30 p.m.

on WETA PBS

WETA features a concert program starring music icon Kenny Rogers — a Grammy Award-winner and Country Music Hall of Fame member — filmed at the Greensboro Coliseum in Greensboro, North Carolina, in March 1983. The special includes exuberant, timeless live performances of eleven Top 10 songs by Rogers at the top of his game and the peak of his popularity. The set list includes six #1 songs (that hit the top spot on a combined 11 different charts) — "The Gambler," "Lady," "Lucille," "Through The Years," "Love Will Turn You Around," and "We've Got Tonight" with Sheena Easton — plus "Ruby, Don't Take Your Love to Town" (from the Kenny Rogers & The First Edition catalog), "Love the World Away," "All My Life," "Scarlet Fever" and "Blaze of Glory." Rogers also performs fan-favorite album cuts including "You Are So Beautiful."

The first country artist to consistently sell out arenas, Rogers achieved pop superstardom around the globe, becoming one of the best-selling artists of all time with more than 120 million albums sold. The staying power, universal appeal, vocal prowess, showmanship, storytelling ability and charisma Rogers had as an artist is on full display in this concert celebrating his extraordinary six-decade career. The program repeats Tuesday, August 15 at 9:30 p.m. on WETA PBS; and an extended version of the show will stream on WETA Passport.



COURTESY KELLY JUNKERMAN, © THE ESTATE OF KENNY ROGERS

Also watch the special 2019 program *Ken Burns: Country Music*, Saturday, August 12 at 8:30 p.m. on WETA PBS. Join host and award-winning singer Kathy Mattea to learn more about the making of the epic documentary — a WETA co-production — devoted to the history of the American art form. Highlighting extraordinary moments from the series, this special program features music; video clips; and interviews with musical artists and filmmaker Ken Burns, his longtime collaborator Dayton Duncan, and other members of the film's creative team.



## Buffalo Soldiers: Fighting on Two Fronts, A Local USA Special

**Tuesday, August 15 at 8 p.m. on WETA PBS; stream on the PBS App**

**A**n award-winning documentary explores the complex history of Black soldiers in the United States military. Director Dru Holley weaves together the testimony of historians, experts and descendants of Buffalo Soldiers with archival photographs, reenactments and animation. The film tells the story of how newly free Black Americans enlisted and served bravely in the U.S. Army — and examines the contradictions in their participation in the settling of the American West and colonialism abroad. Established by Congress in 1868, the 14th Amendment granted full citizenship to Black men; and many pursued service in the armed forces. They helped lead the expansion of the U.S. westward; they helped build and guard transcontinental railroads and served as park rangers in places like Yosemite before the U.S. government established the National Park Service. The soldiers fought in the Indian Wars, the Spanish-American War, the Philippine-American War, the Mexican Punitive Expedition, and many other conflicts.



L. LELAND BARTON/UB. OF CONGRESS, 84764 U.S. COPYRIGHT OFFICE

## All Creatures Great and Small: Chapter Three

**Sunday, August 13 at 8 p.m. on WETA PBS**

**I**n this new special, go behind the scenes of Season 3 of the charming *Masterpiece* series *All Creatures Great and Small* with the drama's cast and creators. The program features interviews with actors Nicholas Ralph (James Herriot), Rachel Shenton (Helen Alderson), Callum Woodhouse (Tristan Farnon), Anna Madeley (Mrs. Hall) and Samuel West (Siegfried Farnon) and celebrates how the series takes viewers back to a simpler time and what makes it so charming, while highlighting some of the favorite storylines. Members of the production team — including lead writer Ben Vanstone, executive producer Melissa Gallant and producer Richard Burrell — provide insight into the creative process. Production designer Jacqueline Smith, makeup designer Jackie Sweeney, and costume designer Ros Little discuss how they research every detail for authentic period sets, hair, makeup, and costumes.



COURTESY PLAYGROUND ENTERTAINMENT & MASTERPIECE

## Great Performances Concert Specials on WETA PBS

**Leonard Bernstein's Kaddish Symphony  
airs Monday, Aug. 21 at 9:30 p.m.**

**Vienna Philharmonic Summer Concert  
airs Friday, Aug. 25 at 9 p.m.**

**P**erforming arts series *Great Performances* presents two classical music concerts this month. On August 21, experience Leonard Bernstein protégé Marin Alsop conducting the Chicago Symphony Orchestra in a performance of Bernstein's *Kaddish Symphony*, featuring soprano Janai Brugger, the Chicago Children's Choir and Jaye Ladymore as narrator. The programmatic choral symphony was published in late 1963 and was dedicated to the memory of John F. Kennedy. "Kaddish" refers to a Jewish prayer recited at services for the dead.

On August 25, enjoy the Vienna Philharmonic Orchestra's annual open-air *Summer Night Concert*, which this year features guest soloist mezzo-soprano Elina Garanča under the direction of guest conductor and Metropolitan Opera music director Yannick Nézet-Séguin. The concert takes place in the gardens of Austria's Imperial Schönbrunn Palace. The programme includes music from Bizet's *Carmen*, Gounoud's *Sapho*, and Saint-Saëns *Samson et Dalila*, along with works by Ravel, Berlioz and others. The concert also airs August 25 at 9 p.m. on WETA Metro.



JULIUS SILVER, GARANČA BY SABAH KATIABINA





# Stream with WETA Passport



Stream your favorite shows with WETA Passport, a member benefit that offers access to a vast library of superb programs available for streaming on demand. To learn how to access programming with WETA Passport, visit [weta.org/passporthelp](https://weta.org/passporthelp).



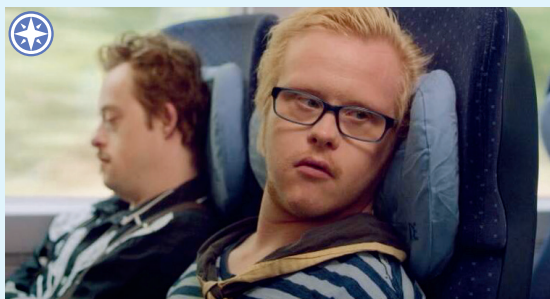
## Professor T (UK version) & More!

With new seasons of *Professor T* (starring Ben Miller), and *Masterpiece* dramas *Van der Valk* and *Unforgotten* premiering September 3, now is the time to catch up on those series' previous episodes with WETA Passport!



## Doc Martin, Series 8 & 9

Martin Clunes stars as the socially challenged physician serving the coastal Cornwall community of Portwenn in Season 9 and Season 8 episodes of the drama, streaming now with WETA Passport. Binge-watch 16 episodes.



## Team Chocolate

Romance blooms and adventure beckons at a Belgian chocolate factory that employs workers with challenges in this sweet, funny series (Flemish; English subtitles). Binge-watch 7 episodes now with WETA Passport.



## Lewis, Series 1-8; last chance to watch!

Kevin Whately and Laurence Fox star in the popular Oxford-set spin-off of the classic *Inspector Morse* detective series. Binge-watch up to 36 episodes until August 8 when the series leaves WETA Passport.



## Once Upon a Time in Northern Ireland

A powerful five-part history of "The Troubles" in Northern Ireland explores the story of the bitter decades-long conflict and presents testimony from those who experienced it. Binge-watch now with WETA Passport.



## America Outdoors with Baratunde Thurston

With Season 2 on the way in September, catch up on the 2022 travel and adventure series that explores how we work, play and interact with the outdoors. Binge-watch 6 Season 1 episodes, available now with WETA Passport.

**Also streaming with WETA Passport** are a wide array of superb news and public affairs series.

Watch *PBS NewsHour*, *PBS News Weekend*, *Washington Week*, *Frontline* and more on the PBS App with WETA Passport.

# Primetime

WETA PBS in August



Visit [weta.org/schedule](http://weta.org/schedule) for the most up-to-date schedule information.

  Denotes WETA productions, co-productions and presentations

|        | 8:00   |   | 8:30  |   | 9:00 |   | 9:30   |   | 10:00                                 |                            | 10:30 |  |
|--------|--|---|---|---|------|---|--|---|---------------------------------------|----------------------------|-------|--|
| 1 Tue  | Finding Your Roots w/ Henry Louis Gates, Jr.,<br>Encore: <i>Science Pioneers</i>           |   |   | Southern Storytellers (Pt 3 of 3)                                 |      |   | Iconic America: Our Symbols and Stories with David Rubenstein (Ep 8. <i>The Golden Gate Bridge</i> ) |   |                                       |                            |       |  |
| 2 Wed  | Animals with Cameras, A <i>Nature</i> Mini-series, Series 2 (Pt 2 of 2. <i>Australia</i> ) |   |   | Human Footprint (Pt 5 of 6: <i>The Urban Jungle</i> )             |      |   | NOVA: The Planets (Pt 5 of 5. <i>Ice Worlds</i> )  |   |                                       |                            |       |  |
| 3 Thu  | Hope Street, Series 2 (Pt 3 of 10)   |   |   | Bancroft, Series 1 (Pt 3 of 4)                                    |      |   | Midsomer Murders, Series 2 ( <i>Beyond the Grave</i> , Pt 2)   |   |                                       |                            |       |  |
| 4 Fri  | Washington Week  | History with David Rubenstein, Season 1 |   | The Great American Recipe, Series 2 (Pt 7 of 8)                   |      |   | La Frontera with Pati Jinich, Series 1 (Pt 2 of 2. <i>From Dos Laredos to Mars</i> )                 |   |                                       |                            |       |  |
| 5 Sat  | Country Music (Pt 6 of 8. <i>Will the Circle Be Unbroken</i> ) (1968-1972)                 |   |   |   |      |   | The Bright Path: The Johnny Bright Story   |   |                                       |                            |       |  |
| 6 Sun  | Ridley (Pt 8 of 8. <i>The Numbered Days</i> , Pt 2)  |   |   | Grantchester, Series 8 on Masterpiece (Pt 5 of 6)                 |      |   | Grantchester, Series 8 on Masterpiece (Pt 6 of 6)  |   |                                       |                            |       |  |
| 7 Mon  | Antiques Roadshow: Cleveland, Hour 2   |   |   | If You Lived Here, Season 3: <i>Annandale, VA</i>                 |      | Wild Hope (Ep 6. <i>Coffee for Water</i> )                              |  | The Great American Recipe, Series 2 (Pt 8 of 8) (to 11:30pm)  |                                       |                            |       |  |
| 8 Tue  | Finding Your Roots w/ Henry Louis Gates, Jr.,<br>Encore: <i>Italian Roots</i>              |   |   | Al Capone: Icon   |      |   |  | Frontline: Inside the Iranian Uprising                        |                                       |                            |       |  |
| 9 Wed  | Nature: The Bat Man of Mexico  |   |   | Human Footprint (Pt 6 of 6. <i>The Ground Below</i> )             |      |   |  | NOVA: Bat Superpowers   |                                       |                            |       |  |
| 10 Thu | Hope Street, Series 2 (Pt 4 of 10)   |   |   | Bancroft, Series 1 (Pt 4 of 4)                                    |      |   |  | Midsomer Murders, Series 2 ( <i>Blood Will Out</i> , Pt 1)    |                                       |                            |       |  |
| 11 Fri | Washington Week  | History with David Rubenstein, Season 1 |   | The Great American Recipe, Series 2 (Pt 8 of 8)                   |      |   |  |   |                                       | The Hook                   |       |  |
| 12 Sat | (from 7pm) The Jewish Journey: America   |   | Ken Burns: <i>Country Music</i> (behind-the-scenes special) |   |      |   |  |   | Kenny Rogers Live in Concert (to 12m) |                            |       |  |
| 13 Sun | All Creatures Great and Small: Chapter Three (behind-the-scenes special)                   |   |   |   |      | Agatha Christie's Marple: By the Pricking of My Thumbs (to 11:30pm)     |  |   |                                       |                            |       |  |
| 14 Mon | Aging Backwards 4: The Miracle of Flexibility  |   |   | If You Lived Here, Season 3: <i>Adams Morgan, DC</i>              |      | Young Forever with Mark Hyman, MD                                       |  |   |                                       |                            |       |  |
| 15 Tue | Buffalo Soldiers: Fighting on Two Fronts: A <i>Local, USA</i> Special                      |   |   |   |      | Kenny Rogers Live in Concert  |  |   |                                       |                            |       |  |
| 16 Wed | Johnny Cash: Man in Black – Live in Denmark 1971   |   |   |   |      | The Jewish Journey: America   |  |   |                                       |                            |       |  |
| 17 Thu | Hope Street, Series 2 (Pt 5 of 10)   |   |   | Bancroft, Series 2 (Pt 1 of 4)                                    |      |   |  | Midsomer Murders, Series 2 ( <i>Blood Will Out</i> , Pt 2)    |                                       |                            |       |  |
| 18 Fri | Washington Week  | Memory Makeover with Daniel Amen, MD    |   |   |      |   |  |   |                                       | Rick Steves: Why We Travel |       |  |
| 19 Sat | (from 7pm) Benjamin Franklin (Pt 1 of 2. <i>Join or Die</i> ) (1706-1774)                  |   |   |   |      | Benjamin Franklin (Pt 2 of 2. <i>An American</i> ) (1775-1790) (to 12m) |  |   |                                       |                            |       |  |
| 20 Sun | This Land Is Your Land   |   |   |   |      | Agatha Christie's Marple: The Sittaford Mystery (to 11:30pm)            |  |   |                                       |                            |       |  |
| 21 Mon | Antiques Roadshow: Vintage Baltimore 2021, Hour 2  |   |   | If You Lived Here, Season 3: <i>Mount Rainier, MD</i>             |      | Great Performances: Leonard Bernstein's <i>Kaddish Symphony</i>         |  |   |                                       | Rick Steves: Why We Travel |       |  |
| 22 Tue | Suze Orman's Ultimate Retirement Guide   |   |   |   |      | Aging Backwards 4: The Miracle of Flexibility                           |  |   |                                       |                            |       |  |
| 23 Wed | Nature: Soul of the Ocean  |   |   |   |      | This Land Is Your Land  |  |   |                                       |                            |       |  |
| 24 Thu | Hope Street, Series 2 (Pt 6 of 10)   |   |   | Bancroft, Series 2 (Pt 2 of 4)                                    |      |   |  | Midsomer Murders, Series 3 ( <i>Dead Man's Eleven</i> , Pt 1) |                                       |                            |       |  |
| 25 Fri | Washington Week  | History with David Rubenstein, Season 1 |   | Great Performances: Vienna Philharmonic Summer Night Concert 2023 |      |   |  | Rick Steves: Why We Travel                                    |                                       |                            |       |  |
| 26 Sat | Country Music (Pt 7 of 8. <i>Are You Sure Hank Done It This Way?</i> ) (1973-1983)         |   |   |   |      |   |  |   |                                       |                            |       |  |
| 27 Sun | What to Do When Someone Dies (drama, Parts 1-3 of 3)                                       |   |   |   |      |   |  |   |                                       |                            |       |  |
| 28 Mon | Antiques Roadshow: Vintage Tucson 2021, Hour 1   |   |   | If You Lived Here, Season 3: <i>Leesburg, VA</i>                  |      | Wild Hope (Ep 7. <i>Salamander of the Gods</i> )                        |  | Once Upon a Time in Northern Ireland (Pt 1 of 5)              |                                       |                            |       |  |
| 29 Tue | Finding Your Roots w/ Henry Louis Gates, Jr.,<br>Encore: <i>War Stories</i>                |   |   | Once Upon a Time in Northern Ireland (Pt 2 of 5)                  |      |   |  | Once Upon a Time in Northern Ireland (Pt 3 of 5)              |                                       |                            |       |  |
| 30 Wed | NOVA: Arctic Ghost Ship  |   |   | Once Upon a Time in Northern Ireland (Pt 4 of 5)                  |      |   |  | Once Upon a Time in Northern Ireland (Pt 5 of 5)              |                                       |                            |       |  |
| 31 Thu | Hope Street, Series 2 (Pt 7 of 10)   |   |   | Bancroft, Series 2 (Pt 3 of 4)                                    |      |   |  | Midsomer Murders, Series 3 ( <i>Dead Man's Eleven</i> , Pt 2) |                                       |                            |       |  |
|        | 8:00   |   | 8:30  |   | 9:00 |   | 9:30   |   | 10:00                                 |                            | 10:30 |  |

**PBS NewsHour** airs weeknights at 7 p.m.  
**PBS News Weekend** airs Sat./Sun. at 6 p.m.

**Amanpour and Company** airs late weeknights (check listings).

# TV Listings

WETA PBS in August



Listings are accurate as of press time. For latest schedules, visit [weta.org/schedule](http://weta.org/schedule) or call 703-998-2724.

WETA PBS is devoted to children's educational programming 8 a.m.-3 p.m., Monday-Friday. For 24 hours of children's programming each day, tune in to the WETA PBS Kids channel. See page 15 for information.

## Program Key

**Blue type** – WETA productions, co-productions and presentations.

**R** – Repeat of recent programming.



COURTESY/DAYS EDGE PRODUCTIONS

**Wednesdays, August 2 & 9 at 9 p.m. on WETA PBS & WETA Metro**  
Documentary series *Human Footprint* continues, hosted by biologist and Princeton University professor Shane Campbell-Staton. In August episodes he explores the urban ecosystem and the history of cotton.

## 1 Tuesday

### WEEKDAYS IN AUGUST:

**6AM NHK NEWSLINE**

**6:30AM BBC NEWS**

**7AM (Mondays:) PBS NEWS WEEKEND**

**7:30 (Mondays:) WASHINGTON WEEK – R**

**7AM (Tuesdays-Saturdays:) PBS NEWSHOUR – R**

**8AM-3PM WETA KIDS PROGRAMMING**

**5PM AMANPOUR AND COMPANY** – Rpt of previous night

**6PM BBC NEWS: THE CONTEXT**

**6:30 BBC NEWS AMERICA**

**7:00 PBS NEWSHOUR** – Each weeknight, the WETA production provides in-depth analysis of current events with a news summary, live studio interviews and discussions of domestic and international issues. Anna Nawaz and Geoff Bennett anchor. Visit [pbs.org/newshour](http://pbs.org/newshour). **Rpts next day, 7am**

**8:00 FINDING YOUR ROOTS WITH HENRY LOUIS GATES, JR. –** In this WETA co-production, join Harvard scholar Henry Louis Gates, Jr., as he delves into the genealogy of famous Americans. *Season 6 encore: Science Pioneers*. Gates traces the family trees of Francis Collins, Shirley Ann Jackson and Harold Varmus, three pioneering scientists who've made dramatic contributions to our understanding of the world while knowing little about their own ancestry. **Repeats Tue 8/8, 4pm**

**9:00 SOUTHERN STORYTELLERS** – Celebrate Southern identity with contemporary creators of literature, music, television and film. *Part 3 of 3*. Some of the South's most influential creators – author Jesmyn Ward; screenwriter Michael Waldron; poet Natasha Trethewey; and songwriters Justin Moore, Tarriona "Tank" Ball and Thao Nguyen – take us to the places that feed their imaginations.

**10:00 ICONIC AMERICA: OUR SYMBOLS AND STORIES WITH DAVID RUBENSTEIN** – In this new documentary series, a WETA co-production, David Rubenstein explores America's history through examinations of iconic national symbols: indelible artifacts, places and archetypes. Each episode tells the story of one symbol to reveal its origins and significance, and the arc of its resonance. *Episode 8 of 8. The Golden Gate Bridge*. The Golden Gate Bridge is an engineering marvel that symbolizes America's can-do spirit. Can America continue to undertake bold and ambitious infrastructure projects in the 21st century? **Repeats Sat 8/5, 7pm, 11pm**

**11:00 AMANPOUR AND COMPANY** – Capping primetime programming each weeknight, Christiane Amanpour leads conversations with global thought leaders on contemporary issues. **Repeats next weekday, 5pm**

## 2 Wednesday

**8:00 ANIMALS WITH CAMERAS, A NATURE MINISERIES, SERIES 2** – Animals fitted with lightweight cameras reveal behavior new to science. *Part 2 of 2. Australia*. Wildlife cameraman Gordon Buchanan fronts a team helping scientists investigate the lives of some of Australia's most iconic animals. Koalas, fruit bats and kangaroos carry cameras into their secret worlds. **Repeats Sun 8/6, 2pm**

**9:00 HUMAN FOOTPRINT** – A six-part documentary series, hosted by biologist and Princeton University professor Shane Campbell-Staton, explores how humans have transformed the planet. *Part 5 of 6. The Urban Jungle*. Campbell-Staton explores the modern city: an ecosystem built by and for us. He encounters three species thriving in the city, reckons with our complex urban history, and envisions a new and wilder urban future. **Repeats Sun 8/6, 3pm**

**10:00 NOVA: THE PLANETS** – Every planet of our solar system has a fascinating story, and their features give us clues to how the solar system formed. *Part 5 of 5. Ice Worlds*. Follow *NOVA* into the far reaches of the solar system: Uranus and Neptune dazzle with unexpected rings, supersonic winds and dozens of moons, and NASA's *New Horizons* probe gets a stunning up-close view of Pluto before venturing deep into the Kuiper Belt. **Repeats Sun 8/6, 4pm**

## 3 Thursday

**8:00 HOPE STREET, SERIES 2** – Set in the fictional town of Port Devine on the northern Irish coast, a drama follows members of the local police department. *Part 3 of 10*. When an ATM is stolen, new detective Al crosses a line to save someone he loves. Finn, struggling to cope, tells Siobhan their marriage is over.

**9:00 BANCROFT, SERIES 1** – A psychological thriller spotlights the ultimate anti-heroine, formidable police detective Elizabeth Bancroft (Sarah Parish, *Broadchurch*). *Part 3 of 4*. Bancroft is faced with a blast from the past that brings 1990 events back to the surface.



COURTESY © GORDON BUCHANAN/BBC

**Wednesday, August 2 at 8 p.m. on WETA PBS & WETA Metro**

In the *Nature* miniseries *Animals with Cameras*, animals fitted with special cameras become wildlife cinematographers and reveal behavior new to science. The August 2 episode observes fauna in Australia.





PHOTO BY LES LEVERETT



## COUNTRY MUSIC A FILM BY KEN BURNS A WETA CO-PRODUCTION

8 p.m. Sats., Aug. 5 & 26 on WETA PBS; 8 p.m. Thursdays on WETA Metro

The Ken Burns film *Country Music* continues, spotlighting the history of the art form and featuring iconic music and indelible stories.

Above: Merle Haggard (left) on *The Johnny Cash Show*, 1970.

Meanwhile, Katherine wrestles with the new information she is uncovering but is eventually faced with a chilling truth.

- 10:00 MIDSOMER MURDERS, SERIES 2: BEYOND THE GRAVE** – *Part 2 of 2.* The slaying of a 17th-century painting in Aspern Tallow Museum heralds the start of a series of manifestations by the ghost of Jonathan Lowrie.

## 4 Friday

- 8:00 WASHINGTON WEEK** – WETA's weekly production presents a roundtable discussion with award-winning journalists who provide reporting and analysis of the major news stories from the nation's capital. Visit [pbs.org/washingtonweek](http://pbs.org/washingtonweek). **Repeats Sat 8/5, 6:30am, 6:30pm; Mon 8/7, 7:30am**
- 8:30 HISTORY WITH DAVID RUBENSTEIN, SEASON 1** – In this WETA presentation, Washington, D.C.-based financier and philanthropist David Rubenstein interviews some of America's top scholars and writers to illuminate how history is made. *Episode 3. Doris Kearns Goodwin, presidential scholar and Pulitzer Prize-winning author.*
- 9:00 THE GREAT AMERICAN RECIPE, SERIES 2** – The cooking competition continues, celebrating multiculturalism in American cuisine. *Part 7 of 8.* See how the home cooks put it all on the plate in their last chance to impress before the finale. From *carne asada* tacos to corn *chaat* to chicken *chapli*, the cooks prepare dishes inspired by a close friend and recipes that changed their lives. **R**
- 10:00 LA FRONTERA WITH PATI JINICH, SERIES 1** – In this WETA presentation, savor the sights, sounds and flavors of the U.S.-Mexico border alongside acclaimed chef Pati Jinich. *Part 2 of 2. From Dos Laredos to Mars.* Jinich travels from Laredo and Nuevo Laredo to Brownsville, Texas. She learns how tight-knit family bonds are an underlying theme connecting everything throughout La Frontera. **Repeats Sun 8/6, 1pm**

## 5 Saturday

- 6AM WASHINGTON WEEK** – **R**
- 6:30 FIRING LINE WITH MARGARET HOOVER** – **R**
- 7AM PBS NEWSHOUR** – **R**
- 8AM JOURNEYS IN JAPAN**
- 8:30 RICK STEVES' EUROPE**
- 9AM THIS OLD HOUSE**
- 9:30 ASK THIS OLD HOUSE**
- 10AM MOTOR WEEK**
- 10:30 DINING WITH THE CHEF**
- 11AM HOW SHE ROLLS**
- 11:30 NEW ORLEANS COOKING WITH KEVIN BELTON**
- 12N A CHEF'S LIFE**
- 12:30 CHRISTOPHER KIMBALL'S MILK STREET TELEVISION**
- 1:00 LIFE OF LOI: MEDITERRANEAN SECRETS**
- 1:30 LIDIA'S KITCHEN**
- 2:00 IN JULIA'S KITCHEN WITH MASTER CHEFS**
- 2:30 SARA'S WEEKNIGHT MEALS**
- 3:00 JOANNE WEIR'S PLATES AND PLACES**

- 3:30 NEW SCANDINAVIAN COOKING**
- 4:00 COOK'S COUNTRY FROM AMERICA'S TEST KITCHEN**
- 4:30 AMERICA'S TEST KITCHEN FROM COOK'S ILLUSTRATED**
- 5:00 PATI'S MEXICAN TABLE**
- 5:30 SAMANTHA BROWN'S PLACES TO LOVE**
- 6:00 PBS NEWS WEEKEND** – John Yang anchors.
- 6:30 WASHINGTON WEEK** – **R**
- 7:00 ICONIC AMERICA: OUR SYMBOLS AND STORIES WITH DAVID RUBENSTEIN** – *Episode 8 of 8. The Golden Gate Bridge.* **R**
- 8:00 COUNTRY MUSIC** – The Ken Burns film, a co-production of Florentine Films and WETA, continues. *Part 6 of 8. Will the Circle Be Unbroken? (1968-1972).* Learn how country music responds to a nation divided by the Vietnam War, as Army-captain-turned-songwriter Kris Kristofferson sets a new lyrical standard, and artists such as Bob Dylan and the Byrds record in Nashville. **Repeats tonight; Sun 8/6, 11pm**
- 10:00 THE BRIGHT PATH: THE JOHNNY BRIGHT STORY** – Learn the story of one Black football player's leadership, athleticism and courage. A stand-out player on Drake University's football team in the late 1940s and early '50s, Johnny Bright was a front-runner to win the 1951 Heisman Trophy. But his life – and the progression of student-athlete safety in college football – would forever change on an October afternoon when the unbeaten Drake Bulldogs traveled to Stillwater, Oklahoma, to face Oklahoma A&M. **Repeats tonight, 2am; Sun 8/6, 1am**
- 11:00 ICONIC AMERICA: OUR SYMBOLS AND STORIES WITH DAVID RUBENSTEIN** – *Episode 8 of 8. The Golden Gate Bridge.* **R**
- 12M COUNTRY MUSIC** – *Part 6 of 8. Will the Circle Be Unbroken? (1968-1972).* **R**

## 6 Sunday

### 6AM-9AM WETA KIDS PROGRAMMING

- 9AM WHITE HOUSE CHRONICLE**
- 9:30 TO THE CONTRARY WITH BONNIE ERBE**
- 10AM THIS IS AMERICA AND THE WORLD WITH DENNIS WHOLEY**
- 10:30 THE OPEN MIND**
- 11:00 FIRING LINE WITH MARGARET HOOVER** – **Repeats Saturdays, 6:30am**
- 11:30 TO DINE FOR WITH KATE SULLIVAN**
- 12N THE GREAT AMERICAN RECIPE, SERIES 2** – *Part 7 of 8.* **R**
- 1:00 LA FRONTERA WITH PATI JINICH, SERIES 1** – *Part 2 of 2. From Dos Laredos to Mars.* **R**
- 2:00 ANIMALS WITH CAMERAS, A NATURE MINISERIES, SERIES 2** – *Part 2 of 2. Australia.* **R**
- 3:00 HUMAN FOOTPRINT** – *Part 5 of 6. The Urban Jungle.* **R**
- 4:00 NOVA: THE PLANETS** – *Part 5 of 5. Ice Worlds.* **R**
- 5:00 THE CHAVIS CHRONICLES** – A talk show hosted by award-winning journalist, civil rights icon and intellectual influencer Dr. Benjamin F. Chavis, Jr. features interviews with thought leaders.
- 5:30 A SEAT AT THE TABLE** – A talk show series featuring hosts Denene Millner, Monica Pearson and Christine White gives voice to African American women's diverse experiences, perspectives and challenges.
- 6:00 PBS NEWS WEEKEND** – John Yang anchors. **Repeats Monday, 7am**



COURTESY KUDOS AND MASTERPIECE

Sunday, August 6 at 9 p.m. & 10 p.m. on WETA PBS & WETA Metro  
*Grantchester, Series 8 on Masterpiece* concludes with back-to-back episodes starring Tom Brittney (above) and Robson Green as a vicar-detective sleuthing duo in a 1950s Cambridgeshire village.



COURTESY PBS

**Monday, August 7 at 10 p.m. on WETA PBS**  
*The Great American Recipe, Series 2* concludes with a final challenge as contestant-cooks impress the judges one last time. The program repeats Friday, August 11 at 9 p.m. on WETA PBS and WETA Metro.

- 6:30 TELL ME MORE WITH KELLY CORRIGAN, SERIES 5** – In this WETA co-production, *New York Times* bestselling author Kelly Corrigan interviews influential people. *Episode 7, Neal Brennan, comedian.*
- 7:00 DOC MARTIN, SERIES 9** – Martin Clunes stars. *Part 6 of 8. Equilibrium.* Martin and Louisa have their first fertility consultation with Dr. Emma Ryder. Well aware that Martin is able to perform the tests himself, she reminds him that he is the patient now, not the doctor. James Lance (*Ted Lasso*) and Conleth Hill (*Game of Thrones*) guest star. **Repeats Sun 8/20, 4pm; Sun 8/27, 11am**
- 8:00 RIDLEY** – *Part 8 of 8. The Numbered Days (Pt 2).* Ridley discovers a shocking connection between the murder case and the arson attack that killed his own family. Ridley finds himself closing in on the truth of what happened on that fateful night.
- 9:00 GRANTCHESTER, SERIES 8 ON MASTERPIECE** – *Part 5 of 6.* Geordie is placed on desk duty as Elliot contrives to force him to resign. The next murder case is handed to Larry, who wisely enlists the help of Miss Scott.
- 10:00 GRANTCHESTER, SERIES 8 ON MASTERPIECE** – *Part 6 of 6.* Will has disappeared, but with Bonnie about to give birth, Geordie must find him and bring him to his senses before it is too late.
- 11:00 COUNTRY MUSIC** – *Part 6 of 8. Will the Circle Be Unbroken? (1968-1972).* **R**
- 1AM THE BRIGHT PATH: THE JOHNNY BRIGHT STORY** – **R**

## 7 Monday

- 7:00 PBS NEWSHOUR** – Weeknights. Visit [pbs.org/newshour](https://pbs.org/newshour). **Repeats next day, 7am**
- 8:00 ANTIQUES ROADSHOW: CLEVELAND, HOUR 2**
- 9:00 IF YOU LIVED HERE, SEASON 3** – WETA reprises Season 3 of its local house-hunting and neighborhood exploration series. Longtime Washingtonians Christine Louise and John Begeny host, touring area homes and communities with local realtors. **Episode 9 of 12. Annandale, VA.** The hosts tour three homes with realtor Deirdre Thao Vo: a split-level starter home; followed by a charming mid-century modern home with contemporary updates; and, finally, a 5-bed/5-bath modern, open-concept home. Also learn about Annandale's Korean food and business community, thriving local arts scene, and one particularly interesting shop. **Repeats Sun 8/13, 6:30pm**
- 9:30 WILD HOPE** – Spotlighting the environment, this miniseries features stories of intrepid changemakers working to restore and protect the planet. **Episode 6. Coffee for Water.** Decades of war and unsustainable agriculture have ravaged the rainforest atop Mozambique's Mount Gorongosa. The devastation threatens the watershed that sustains life in nearby communities and in Gorongosa National Park. Now, park experts and local farmers are uniting to plant shade-loving coffee.
- 10:00 THE GREAT AMERICAN RECIPE, SERIES 2** – *Part 8 of 8.* Gather with the three remaining home cooks as they get ready for the grand finale feast. In the final round, their challenge is to prepare an entire meal that represents their Great American Recipe. Who will be named the competition's winner? (90 min.) **Repeats Fri 8/11, 9pm**

## 8 Tuesday

- 8:00 FINDING YOUR ROOTS WITH HENRY LOUIS GATES, JR.** – In this WETA co-production, join Harvard scholar Henry Louis Gates, Jr., as he delves into the genealogy of famous Americans. *Season 6 encore: Italian Roots.* Gates explores the roots of talk show host Jimmy Kimmel and actors Marisa Tomei and John Turturro, introducing them to ancestors who made immense sacrifices to bring their families from Italy to America.
- 9:00 AL CAPONE: ICON** – Was Al Capone the quintessential self-made American man or a ruthless killer – or both? Just his name sparks images of pin-stripe suits and bloody violence. To this day, Americans are fascinated by this celebrity gangster. **Why?**
- 10:00 FRONTLINE: INSIDE THE IRANIAN UPRISING** – *Frontline* goes inside the protests that have rocked Iran since the death of a young woman in police custody. With a trove of footage filmed by protestors, much of it previously unseen, this program sheds new light on a regime under unprecedented pressure.

## 9 Wednesday

- 8:00 NATURE: THE BAT MAN OF MEXICO** – An ecologist tracks the Lesser Long-nosed bat's epic migration across Mexico, braving hurricanes, snakes, Mayan tombs and seas of cockroaches in order to save the species and the tequila plants the bats pollinate.
- 9:00 HUMAN FOOTPRINT** – *Part 6 of 6. The Ground Below.* Campbell-Staton explores the history and science of cotton. A prehistoric coastline from North Carolina to Texas laid the foundation for a crop that re-shaped our history, our culture, and even our DNA.
- 10:00 NOVA: BAT SUPERPOWERS** – Bats have been implicated in deadly epidemics like COVID-19 and Ebola, yet they may hold a key to a longer and healthier life. From caves in Thailand and Texas to labs around the globe, *NOVA* meets the scientists who are decoding bat superpowers.

## 10 Thursday

- 8:00 HOPE STREET, SERIES 2** – *Part 4 of 10.* The whole town searches for a missing mother when a car is pulled from Port Devine harbor. Meanwhile, Al kisses someone he shouldn't.
- 9:00 BANCROFT, SERIES 1** – *Part 4 of 4.* Katherine and Anya push to get to the bottom of the Laura Fraser case, hatching a plan to gather DNA evidence. Meanwhile, Bancroft undertakes a massive sting operation, but all doesn't go smoothly. She is forced to reveal secrets about her past, and we learn what really happened to Laura Fraser, and why.
- 10:00 MIDSOMER MURDERS, SERIES 2: BLOOD WILL OUT** – John Nettles stars as DCI Tom Barnaby; Daniel Casey portrays DS Gavin Troy. *Blood Will Out: Part 1 of 2.*



COURTESY MCGEE MEDIA

**FINDING YOUR ROOTS  
 WITH HENRY LOUIS GATES, JR.  
 A WETA CO-PRODUCTION**

**Tuesdays, August 1, 8 & 29 at 8 p.m. on WETA PBS & WETA Metro**  
 Genealogy series *Finding Your Roots* with Henry Louis Gates, Jr. presents encore episodes in August, illuminating family histories of renowned celebrities such as actor Julianne Moore (Aug. 29).





**Wednesday, August 9 at 8 p.m. on WETA PBS & WETA Metro**  
*In Nature: The Bat Man of Mexico*, ecologist Rodrigo Medellín tracks a bat species' epic migration across Mexico, braving hurricanes, snakes and cockroaches to help save the bats from extinction.

When an unpopular local magistrate, Hector Bridges, is found shot dead in his house, investigations uncover a tangled web of family relationships. And someone with a grudge against Bridges had recently arrived in town. Honeysuckle Weeks (*Foyle's War*) guest stars.

## 11 Friday

**8:00 WASHINGTON WEEK – Repeats Sat 8/12, 6am, 6:30pm; Mon 8/14, 7:30am**

**8:30 HISTORY WITH DAVID RUBENSTEIN, SEASON 1** – In this WETA presentation, Washington, D.C.-based financier and philanthropist David Rubenstein interviews some of America's top scholars and writers to illuminate how history is made. *Episode 4. Ron Chernow, author of the Pulitzer Prize-winning book "Alexander Hamilton."*

**9:00 THE GREAT AMERICAN RECIPE, SERIES 2 – Part 8 of 8.** See the Monday, August 7, 10 p.m. listing. **R**

**10:30 THE HOOK** – Chef Ricky Moore traces the journey of the bonefish he loves from ocean to plate. From the producers of *A Chef's Life*, this program goes behind the scenes with Moore at his Durham restaurant, Saltbox Seafood Joint, to highlight the seafood traditions of North Carolina's coastline and celebrate the contributions of Black chefs and fishermen to coastal food culture.

## 12 Saturday

**6AM WASHINGTON WEEK – R**

**6:30 FIRING LINE WITH MARGARET HOOVER – R**

**7AM PBS NEWSHOUR – R**

**8AM MEMORY MAKEOVER WITH DANIEL AMEN, MD** – See the Friday, August 18, 8:30 p.m. listing. **Repeats tonight, midnight; Wed 8/16, 3pm; Fri 8/18, 8:30pm; Sun 8/20, 9am**

**10:00 RICK STEVES' EUROPE: GREAT GERMAN CITIES** – See the Sunday, August 13, 11:30 p.m. listing. **Repeats tonight, 2am**

**12N AGATHA CHRISTIE'S MARPLE: BY THE PRICKING OF MY THUMBS** – See the Sunday, August 13, 9:30 p.m. listing.

**2:00 AGATHA CHRISTIE'S MARPLE: THE SITTAFFORD MYSTERY** – Geraldine McEwan stars as Agatha Christie's shrewd English sleuth Miss Marple. Miss Marple waits out a blizzard at Sittaford House, a remote Devon mansion owned by eminent politician Clive Trevelyan (Timothy Dalton). The long snowy night turns deadly when a murder is committed. **Repeats Sun 8/20, 9:30pm**

**4:00 AGATHA CHRISTIE'S MARPLE: AT BERTRAM'S HOTEL** – Geraldine McEwan stars. When Miss Marple stays in London's fashionable Bertram's Hotel, she notes an atmosphere of danger behind the highly polished veneer. Many of the guests are gathered for the will reading of a multi-millionaire who disappeared years previously.

**6:00 PBS NEWS WEEKEND** – John Yang anchors.

**6:30 WASHINGTON WEEK – R**

**7:00 THE JEWISH JOURNEY: AMERICA** – Follow Jewish immigration to the U.S. through the centuries. Top scholars, notable writers and immigrants themselves share stories of those who made a leap of faith to escape persecution or pursue opportunity. **Repeats Wed 8/16, 9:30pm**

**8:30 KEN BURNS: COUNTRY MUSIC** – Join host Kathy Mattea to learn more about the making of the epic 2019 documentary series, a Florentine Films and WETA co-production devoted to the history of this American art form. The special program features interviews with Rosanne Cash, along with filmmaker Ken Burns and other members of the *Country Music* production team.

**Repeats Sun 8/13, 1:30am**

**10:30 KENNY ROGERS LIVE IN CONCERT** – Celebrate the career of the worldwide music icon in a 1983 concert recorded at the peak of his popularity. The program features performances of 11 Top 10 songs, including fan favorites "The Gambler," "Lady," and "Through the Years." **Repeats Tue 8/15, 9:30pm**

**12M MEMORY MAKEOVER WITH DANIEL AMEN, MD – R**

**2AM RICK STEVES' EUROPE: GREAT GERMAN CITIES – R**

## 13 Sunday

**6AM RICK STEVES: WHY WE TRAVEL** – Travel expert Rick Steves offers up a love note to travel, celebrating the value of exploring our world – whether as a tourist, a traveler or a pilgrim. Featuring vivid footage from around the globe, the special also illustrates why travel is more important than ever as we emerge from the Pandemic. **Repeats Mon 8/14, 4:30pm; Fri 8/18, 10:30pm; Sat 8/19, 5:30pm; Mon 8/21, 3pm, 10:30pm; Fri 8/25, 10:30pm**

**6:30 KEN BURNS: THE NATIONAL PARKS** – Explore the beauty and grandeur of our nation's magnificent parks, from Acadia to Yosemite, Yellowstone to the Grand Canyon. Filmmakers Ken Burns and Dayton Duncan reveal fascinating behind-the-scenes stories about the making of their series *The National Parks: America's Best Idea*, a 2009 co-production of Florentine Films and WETA. **Repeats Sun 8/20, 12:30am; Tue 8/22, 3pm**

**8:30 SUZE ORMAN'S ULTIMATE RETIREMENT GUIDE** – Join the acclaimed personal finance expert for essential advice on planning for and thriving in retirement. With empathy, straight talk and humor, Orman provides information about key actions. Topics include when to retire, how to save and invest for retirement, Social Security strategy, long-term care insurance, and more. **Repeats Fri 8/18, 3pm; Sat 8/19, 8am, 1am; Tue 8/22, 8pm; Fri 8/25, 3pm**

**10:30 SANDITON, SERIES 3 ON MASTERPIECE** – Jane Austen's final, incomplete novel tells the story of the spirited and unconventional Charlotte Heywood (Rose Williams) – and the romantic journeys of her and her friend, heiress Georgiana Lambe (Crystal Clarke). *Part 1 of 6.* Fiancé in tow, Charlotte arrives back in Sanditon for Georgiana's 21st birthday party, but seeing Colbourne again leaves her feeling uncertain. Meanwhile, Georgiana receives a threat, and Edward tries to prove he is a changed man. *Part 2 of 6.* Georgiana faces a nearly impossible task, but help arrives from a surprising place, which results in Charlotte and Colbourne being thrown together again. Lady Denham accepts a new vision for the town. **Repeats Mon 8/14, midnight**

**1:00 SANDITON, SERIES 3 ON MASTERPIECE – Part 3 of 6.** The day of Georgiana's trial arrives, and she gets a surprise visit from an old friend. Colbourne's shooting party goes ahead, and as he gets closer to Lydia, Charlotte



**Saturday, August 12, noon-6 p.m. on WETA PBS**

*Agatha Christie's Marple* presents classic Miss Marple mysteries starring Geraldine McEwan in her signature role as the shrewd English sleuth. Three episodes air August 12 and some repeat during the month. Above: Timothy Dalton is among many guest stars.



must confront all that she's lost. *Part 4 of 6.* Charlotte attempts to distance herself from Colbourne, but as they are repeatedly thrown into each other's orbit, their chemistry increases along with Ralph's suspicions. Meanwhile, Georgiana is unraveling and makes a surprising decision to protect herself. **Repeats Tue 8/15, midnight**

- 3:30 SANDITON, SERIES 3 ON MASTERPIECE** – *Part 5 of 6.* Charlotte and Colbourne rush to Augusta's aid, and it's revealed whether Edward has really changed. Georgiana is reunited with a ghost from her past, and Charlotte must make a decision about her future. *Part 6 of 6.* Charlotte desperately wants to tell Colbourne the truth about her feelings, but a shocking revelation stops her in her tracks. Having opened her heart, Georgiana's worst fears are realized. **Repeats Wed 8/16, midnight**
- 6:00 PBS NEWS WEEKEND** – John Yang anchors. **Repeats Monday, 7am**
- 6:30 IF YOU LIVED HERE, SEASON 3** – *Episode 9 of 12.* Annandale, VA. **R**
- 7:00 DOC MARTIN, SERIES 9** – *Part 7 of 8.* *Single White Bevy.* Local vet Angela Sim has to consult Dr. Martin Ellingham about a lump in her breast. Guest stars include Robyn Addison, who returns as former nanny Janice Bone, and Caroline Quentin (*Jonathan Creek*). **Repeats Sun 8/20, 5pm; Sun 8/27, noon**
- 8:00 ALL CREATURES GREAT AND SMALL: CHAPTER THREE** – Go behind the scenes of the charming *Masterpiece* series with the cast and creators. Learn how every detail is researched for authentic period sets and costumes. The program also includes stories about the joys – and challenges – of working with animals. **Repeats Mon 8/14, 3pm; Sat 8/19, 10am**
- 9:30 AGATHA CHRISTIE'S MARPLE: BY THE PRICKING OF MY THUMBS** – Geraldine McEwan stars as Agatha Christie's shrewd English sleuth Miss Marple. Detectives Tommy and Tuppence Beresford (Anthony Andrews and Greta Scacchi) visit an elderly aunt in her nursing home, and Tuppence becomes concerned by some odd behavior among the staff and residents. Later, a sudden death and a disappearance bring Miss Marple together with the Beresfords to follow a path of clues.
- 11:30 RICK STEVES' EUROPE: GREAT GERMAN CITIES** – Travel expert Rick Steves explores five of Germany's cities: Hamburg, Dresden, Leipzig, Frankfurt and Nürnberg. From Baroque palaces to stunning modern skyscrapers, and from riverside promenades to rowdy beer halls, these metropolises are wonderful places to explore the country's fascinating culture. **Repeats Tue 8/15, 3pm; Sun 8/20, 7am; Thur 8/24, 3pm**
- 1:30AM KEN BURNS: COUNTRY MUSIC** – **R**

## 14 Monday

- 7:00 PBS NEWSHOUR** – Weeknights. Visit [pbs.org/newshour](https://pbs.org/newshour). **Repeats next day, 7am**
- 8:00 AGING BACKWARDS 4: THE MIRACLE OF FLEXIBILITY** – Join Miranda Esmonde-White to learn how gentle flexibility and range of motion exercises can improve posture, help reverse signs of aging, improve organ health, and increase energy. This program examines how sitting less and moving more is vital to every aspect of life. **Repeats Thur 8/17, 4pm; Sat 8/19, midnight; Sun 8/20, 6am; Tue 8/22, 10pm**



**Sunday, August 13 at 8 p.m. on WETA PBS**

Program special *All Creatures Great and Small: Chapter Three* goes behind the scenes of the charming *Masterpiece* series with its cast and creators. Learn how the series takes viewers back in time.



**BENJAMIN FRANKLIN**  
A WETA CO-PRODUCTION

**Saturday, August 19 at 7 p.m. & 9:30 p.m. on WETA PBS**

*Benjamin Franklin*, Ken Burns's acclaimed 2022 documentary, explores the revolutionary life of one of the 18th century's most compelling and consequential figures, whose work and words unlocked the mystery of electricity and helped create the United States.

- 9:00 IF YOU LIVED HERE, SEASON 3** – WETA reprises Season 3 of its local house-hunting and neighborhood exploration series. **Episode 10 of 12.** *Adams Morgan, DC.* Guided by realtor David Bediz, hosts John and Christine visit the popular entertainment destination in D.C. that features both diverse housing options and a diverse community. Tour a one-bed/one-bath apartment that overlooks Meridian Hill Park, a Beaux-Arts style co-op in the heart of the neighborhood, and a 100-year-old townhouse on a quiet street. **Repeats Sun 8/20, 6:30pm**
- 9:30 YOUNG FOREVER WITH MARK HYMAN, MD** – Learn dozens of science-based strategies and tips from functional medicine practitioner Dr. Mark Hyman, who offers a revolutionary, practical guide to creating and sustaining health – for life. **Repeats Sat 8/19, 2pm; Wed 8/23, 3pm**

## 15 Tuesday

- 8:00 BUFFALO SOLDIERS: FIGHTING ON TWO FRONTS: A LOCAL, USA SPECIAL** – Explore the complex history of Black Americans who enlisted in the U.S. military as a path to citizenship, a livelihood, and greater respect – and how they fought in military conflicts abroad and civil rights struggles at home. **Repeats Sat 8/19, 11:30am**
- 9:30 KENNY ROGERS LIVE IN CONCERT** – Celebrate the career of the worldwide music icon in a 1983 concert recorded at the peak of his popularity. The program features performances of eleven Top 10 songs, including fan favorites "The Gambler," "Lady," and "Through the Years."

## 16 Wednesday

- 8:00 JOHNNY CASH: MAN IN BLACK – LIVE IN DENMARK 1971** – Join the country music icon in a classic concert, along with the Tennessee Three, June Carter Cash, Carter family matriarch Maybelle Carter, rockabilly eminence Carl Perkins, and the Statler Brothers, as they perform country, rockabilly, American roots music and spirituals.
- 9:30 THE JEWISH JOURNEY: AMERICA** – Follow Jewish immigration to the U.S. through the centuries. Top scholars, notable writers and immigrants themselves share stories of those who made a leap of faith to escape persecution or pursue opportunity. **R**

## 17 Thursday

- 8:00 HOPE STREET, SERIES 2** – *Part 5 of 10.* As the police officers fight to secure a grieving daughter's birthright, Al does something truly terrible to save his own daughter's skin.

- 9:00 BANCROFT, SERIES 2** – Detective Elizabeth Bancroft returns, riding a professional high, but a double murder puts all in jeopardy. *Part 1 of 4.* Promoted to Detective Chief Superintendent, Bancroft enjoys career success but at great personal cost. When a double murder brings an unexpected reunion, she is forced onto the sidelines. As new enemies emerge, old foes make their move.
- 10:00 MIDSOMER MURDERS, SERIES 2: BLOOD WILL OUT** – *Part 2 of 2.* The investigation into the death of unpopular local magistrate Hector Bridges continues. Was the killer someone in the family? An old army comrade with a grudge? Or someone among the group of travelers on the village common?

## 18 Friday

- 8:00 WASHINGTON WEEK** – Repeats Sat 8/19, 6am, 6:30pm; Mon 8/21, 7:30am
- 8:30 MEMORY MAKEOVER WITH DANIEL AMEN, MD** – In this program, award-winning psychiatrist, neuroscientist and 10-time *New York Times* bestselling author Dr. Daniel Amen explains how to supercharge memory and remember what matters most to you. The process of strengthening memory is based on treating and overcoming risk factors that destroy the brain's capacities. Repeats Sun 8/20, 9am
- 10:30 RICK STEVES: WHY WE TRAVEL** – Travel expert Rick Steves offers up a love note to travel, celebrating the value of exploring our world – whether as a tourist, a traveler or a pilgrim. Repeats Sat 8/19, 5:30pm; Mon 8/21, 3pm, 10:30pm; Fri 8/25, 10:30pm

## 19 Saturday

- 6AM WASHINGTON WEEK** – R
- 6:30 FIRING LINE WITH MARGARET HOOVER** – R
- 7AM PBS NEWSHOUR** – R
- 8AM SUZE ORMAN'S ULTIMATE RETIREMENT GUIDE** – R
- 10AM ALL CREATURES GREAT AND SMALL: CHAPTER THREE** – R
- 11:30 BUFFALO SOLDIERS: FIGHTING ON TWO FRONTS: A LOCAL, USA SPECIAL** – R
- 1:00 MIDSOMER MURDERS: 25 YEARS OF MAYHEM** – A documentary celebrates 25 years of the enduring, beloved British crime drama and how it came to life from the pages of Caroline Graham's Chief Inspector Barnaby books. Celia Imrie narrates. Cast member interviewees include Neil Dudgeon, John Nettles, Jane Wymark, and Jason Hughes. Also highlighted are early career appearances from actors such as Orlando Bloom, Olivia Colman and Henry Cavill. Repeats Sun 8/20, 11:30pm
- 2:00 YOUNG FOREVER WITH MARK HYMAN, MD** – R
- 4:00 THIS LAND IS YOUR LAND** – See the Sunday, August 20, 8 p.m. listing.
- 5:30 RICK STEVES: WHY WE TRAVEL** – R
- 6:00 PBS NEWS WEEKEND** – John Yang anchors.
- 6:30 WASHINGTON WEEK** – R
- 7:00 BENJAMIN FRANKLIN** – In a WETA co-production directed by Ken Burns, follow the life of the scientist, inventor, writer of enduring epigrams and homespun wisdom, and creator of America's first subscription library and one of its most prestigious universities, who

may have been the nation's most complex and compelling Founding Father – and its wittiest. *Part 1 of 2.* *Join or Die* (1706-1774). After building a printing empire in Philadelphia with his wife Deborah, Benjamin Franklin gains worldwide fame from electricity experiments, then spends years in London trying to keep Britain and America together as his family comes apart.

- 9:30 BENJAMIN FRANKLIN** – *Part 2 of 2.* *An American* (1775-1790). In wartime Philadelphia, Franklin helps Thomas Jefferson craft the Declaration of Independence. In Paris, he wins French support for the American Revolution. Back home, he works on the Constitution of the new United States.
- 12M AGING BACKWARDS 4: THE MIRACLE OF FLEXIBILITY** – R

## 20 Sunday

- 6AM AGING BACKWARDS 4: THE MIRACLE OF FLEXIBILITY** – R
- 7AM RICK STEVES' EUROPE: GREAT GERMAN CITIES** – R
- 9AM MEMORY MAKEOVER WITH DANIEL AMEN, MD** – R
- 11AM DOC MARTIN, SERIES 9** – Martin Clunes returns as Dr. Martin Ellingham, whose career in the coastal Cornwall village of Portwenn hangs in the balance as he faces scrutiny following complaints about his approach to patients. *Part 1 of 8.* *To the Lighthouse.* Repeats Sun 8/27, 6am
- 12N DOC MARTIN, SERIES 9** – *Part 2 of 8.* *The Shock of the New.* Repeats Sun 8/27, 7am
- 1:00 DOC MARTIN, SERIES 9** – *Part 3 of 8.* *S.W.A.L.K.* Repeats Sun 8/27, 8am
- 2:00 DOC MARTIN, SERIES 9** – *Part 4 of 8.* *Paint It Black.* Repeats Sun 8/27, 9am
- 3:00 DOC MARTIN, SERIES 9** – *Part 5 of 8.* *Wild West Country.* Repeats Sun 8/27, 10am
- 4:00 DOC MARTIN, SERIES 9** – *Part 6 of 8.* *Equilibrium.* Repeats Sun 8/27, 11am
- 5:00 DOC MARTIN, SERIES 9** – *Part 7 of 8.* *Single White Bevy.* Repeats Sun 8/27, noon
- 6:00 PBS NEWS WEEKEND** – John Yang anchors. Repeats Monday, 7am
- 6:30 IF YOU LIVED HERE, SEASON 3** – *Episode 10 of 12.* Adams Morgan, DC. R
- 7:00 DOC MARTIN, SERIES 9** – Season finale. *Part 8 of 8.* *License to Practice.* Wedding bells are ringing in Portwenn with the preparations for Morwenna and Al's wedding. But some last-minute hitches threaten to jeopardize their big day. Guest stars include Tom Conti (*Miranda*; *Lark Rise to Candleford*; *Friends*). Repeats Sun 8/27, 1pm
- 8:00 THIS LAND IS YOUR LAND** – The Smothers Brothers (Tom and Dick) and musical artist Judy Collins host a musical journey through the evolution of modern American folk music. Among those featured are The Brothers Four, Glenn Yarborough, the Highwaymen, Roger McGuinn and John Sebastian. Repeats Mon 8/21, 3:30pm; Wed 8/23, 9:30pm
- 9:30 AGATHA CHRISTIE'S MARPLE: THE SITTAFFORD MYSTERY** – Geraldine McEwan stars as Agatha Christie's shrewd English sleuth Miss Marple. Miss Marple waits out a blizzard at Sittaford House, a remote Devon mansion owned by eminent politician Clive Trevelyan (Timothy Dalton). The long snowy night turns deadly when a murder is committed. R
- 11:30 MIDSOMER MURDERS: 25 YEARS OF MAYHEM** – See the Saturday, August 19, 1 p.m. listing. R
- 12:30AM KEN BURNS: THE NATIONAL PARKS** – R

## 21 Monday

- 7:00 PBS NEWSHOUR** – Weeknights. Visit [pbs.org/newshour](http://pbs.org/newshour). Repeats next day, 7am
- 8:00 ANTIQUES ROADSHOW: VINTAGE BALTIMORE 2021, HOUR 2** – What are treasures from the 2007 Roadshow in Baltimore worth now? One has more than doubled to \$250,000. Repeats Mon 8/28, 4pm
- 9:00 IF YOU LIVED HERE, SEASON 3** – WETA reprises Season 3 of its local house-hunting and neighborhood exploration series. *Episode 11 of 12.* *Mount Rainier, MD.* With realtor Silvana Dias, hosts John and Christine visit the "streetcar suburb" of Mount Rainier. They tour a bungalow; an "urban-country" historic farmhouse; and, finally, a newly built home in the heart of the neighborhood. Also, meet three of the community's mayors and learn about its thriving artists.



COURTESY TIL PRODUCTIONS

### Sunday, August 20 at 8 p.m. on WETA PBS

Concert program *This Land Is Your Land* presents a musical journey through the evolution of folk music, hosted by the Smothers Brothers and Judy Collins. Above: The Brothers Four perform in the special.



- 9:30 GREAT PERFORMANCES: LEONARD BERNSTEIN'S KAD-DISH SYMPHONY**— Experience Bernstein protégé Marin Alsop conducting the choral symphony — performed by the Chicago Symphony Orchestra at the Ravinia Festival, featuring soprano Janai Brugger, the Chicago Children's Choir and Jaye Ladymore as narrator. "Kad-dish" refers to a Jewish prayer for the dead.
- 10:30 RICK STEVES: WHY WE TRAVEL** — R

## 22 Tuesday

- 8:00 SUZE ORMAN'S ULTIMATE RETIREMENT GUIDE** — R
- 10:00 AGING BACKWARDS 4: THE MIRACLE OF FLEXIBILITY** — R

## 23 Wednesday

- 8:00 NATURE: SOUL OF THE OCEAN** — Experience the complex world of ocean waters as *Nature* offers a look at how life underwater co-exists in a marriage of necessity.
- 9:30 THIS LAND IS YOUR LAND** — The Smothers Brothers (Tom and Dick) and musical artist Judy Collins host a musical journey through the evolution of modern American folk music. Among those featured are the Brothers Four, Glenn Yarbrough, the Highwaymen, Roger McGuinn and John Sebastian. **R**

## 24 Thursday

- 8:00 HOPE STREET, SERIES 2** — *Part 6 of 10.* Sparks fly when Marlene meets an outspoken farmer who hates the police. A stressed-out Finn is pushed to a breaking point.
- 9:00 BANCROFT, SERIES 2** — *Part 2 of 4.* The evidence around the murders points the team in one direction, but the disappearance of the prime suspects escalates Elizabeth's own investigations. With Bevan managing the Kamara deal, Walker gains a lead in his case against Bancroft. As the walls close in, Elizabeth acts to take control.
- 10:00 MIDSOMER MURDERS, SERIES 3: DEAD MAN'S ELEVEN** — John Nettles stars as DCI Tom Barnaby; Daniel Casey portrays DS Gavin Troy. *Dead Man's Eleven: Part 1 of 2.* Barnaby's plans to move to the village of Fletcher's Cross are disrupted when the wife of a landowner is bludgeoned to death in Midsomer Worthy with a cricket bat while out walking her dog. Imelda Staunton (*Harry Potter*; *The Crown*) guest stars.

## 25 Friday

- 8:00 WASHINGTON WEEK** — *Repeats Sat 8/26, 6am, 6:30pm; Mon 8/28, 7:30am*
- 8:30 HISTORY WITH DAVID RUBENSTEIN, SEASON 1** — In this WETA presentation, Washington, D.C.-based financier and philanthropist David Rubenstein interviews some of America's top scholars and writers to illuminate how history is made. *Episode 5. Drew Gilpin Faust, author and former president of Harvard University.*
- 9:00 GREAT PERFORMANCES: VIENNA PHILHARMONIC SUMMER NIGHT CONCERT 2023** — Enjoy the Vienna Philharmonic Orchestra's annual open-air summer concert featuring guest soloist Elina Garanča under the direction of guest conductor and Metropolitan Opera music director Yannick Nézet-Séguin from the gardens of Austria's Imperial Schönbrunn Palace.
- 10:30 RICK STEVES: WHY WE TRAVEL** — R

## 26 Saturday

- 6AM WASHINGTON WEEK** — R
- 6:30 FIRING LINE WITH MARGARET HOOVER** — R
- 7AM PBS NEWSHOUR** — R
- 8AM-6PM WETA VIEWER FAVORITES**



COURTESY HOWARD HALL

**Wednesday, August 23 at 8 p.m. on WETA PBS**

*Nature: Soul of the Ocean* spotlights the complex undersea world, offering a glimpse of how life underwater co-exists in a marriage of necessity. Above: A turtle being cleaned by surgeonfish.

**6:00 PBS NEWS WEEKEND** — John Yang anchors.

**6:30 WASHINGTON WEEK** — R

**7PM-8PM WETA VIEWER FAVORITES**

**8:00 COUNTRY MUSIC** — The Ken Burns film, a co-production of Florentine Films and WETA, continues. *Part 7 of 8. Are You Sure Hank Done It This Way? (1973-1983).* Witness a vibrant era in country music, with Dolly Parton finding mainstream success; Hank Williams, Jr. and Rosanne Cash emerging from their famous fathers' shadows; and Willie Nelson and Waylon Jennings launching the "Outlaw" movement. *Repeats tonight, midnight; Sun 8/27, 11pm*

**11PM-6AM WETA VIEWER FAVORITES**

## 27 Sunday

**6AM-2PM DOC MARTIN, SERIES 9** — *Parts 1-8 of 8.* WETA reprises the full season of the popular drama. **R**

**2PM-6PM WETA VIEWER FAVORITES**

**6:00 PBS NEWS WEEKEND** — John Yang anchors. *Repeats Monday, 7am*

**6:30PM-8PM WETA VIEWER FAVORITES**

**8:00 WHAT TO DO WHEN SOMEONE DIES** — Anna Friel stars as schoolteacher Ellie Manning, who is devastated to learn that her husband Greg (Marc Warren) has died in a horrific car accident with a mystery woman in the passenger seat. *Part 1 of 3.* Stricken with grief, and refusing to believe her husband was having an affair, Ellie sets out to find the truth of who the mystery woman was, and why she was in the car.

**9:00 WHAT TO DO WHEN SOMEONE DIES** — *Part 2 of 3.* Ellie goes to a workplace using a fake name under the guise of being helpful, but really looking for clues. The business owner confides in Ellie that her own marriage is over, as she had fallen for someone — possibly a key piece of information.

**10:00 WHAT TO DO WHEN SOMEONE DIES** — *Part 3 of 3.* Ellie tries to persuade a police inspector that several deaths are linked. Obtaining the truth puts her in danger.

**11PM-6AM WETA VIEWER FAVORITES**

## 28 Monday

**7:00 PBS NEWSHOUR** — Weeknights. Visit [pbs.org/newshour](https://pbs.org/newshour). *Repeats next day, 7am*

**8:00 ANTIQUES ROADSHOW: VINTAGE TUCSON 2021, HOUR 1**

**9:00 IF YOU LIVED HERE, SEASON 3** — WETA reprises Season 3 of its local house-hunting and neighborhood exploration series. *Episode 12 of 12. Leesburg, VA.* Vineyards, country charm and history — welcome to Leesburg! Join hosts John and Christine, and realtor Vicky Noufal,

WETA Magazine is published monthly by the Greater Washington Educational Telecommunications Association for its members. Three dollars of each member's dues are designated for its subscription. WETA occasionally exchanges member names with other organizations. If you wish that your name not be exchanged, please call Audience Services at 703-998-2724. ©2023 by Greater Washington Educational Telecommunications Association. All rights reserved. No part of this magazine may be reproduced in any form without written permission. Periodical postage paid at Arlington, VA 22210 and additional offices. Send address changes to WETA, 3939 Campbell Avenue, Arlington, Virginia 22206. Volume 36, Number 8. ISSN No. 1041-2700.

PRINTED ON RECYCLED PAPER



Publisher Mary Stewart  
Editor Jeff Giese  
Design MANIFEST LLC

Editorial and Advertising Offices  
3939 Campbell Ave.  
Arlington, VA 22206



as they tour three homes in this Virginia community, including a single-family home built in 1798, a five-bedroom in the heart of the Lansdowne neighborhood, and a large home on 11 acres.

**9:30 WILD HOPE** – *Episode 7. Salamander of the Gods.* The *axolotl* – an amphibian with incredible regenerative abilities – is ubiquitous in pop culture, pet stores and science labs, yet almost extinct in the wild. Now, scientists and farmers in Mexico City are using ancient Aztec farming techniques to secure the creature’s future. Another team is partnering with nuns to save a closely-related species – the *achoque*.

**10:00 ONCE UPON A TIME IN NORTHERN IRELAND** – In this powerful documentary series, explore how ordinary men, women and children were drawn, willingly and unwillingly, into “the Troubles,” the conflict in Northern Ireland that spanned three decades. *Part 1 of 5. It Wasn’t Like a Movie Anymore.* Learn how people became caught up in conflict in Northern Ireland as events progress from protests and rioting to full-blown violence. When tensions between Catholic and Protestant communities explode, the British Army is deployed.

29 Tuesday

**8:00 FINDING YOUR ROOTS WITH HENRY LOUIS GATES, JR.** – In this WETA co-production, join Harvard scholar Henry Louis Gates, Jr., as he delves into the genealogy of famous Americans. *Season 6 encore: War Stories.* Gates explores the roots of actor Julianne Moore, comedian Bill Hader and painter Kehinde Wiley, revealing how their ancestors’ military service left an indelible mark on their families and on their country.

**9:00 ONCE UPON A TIME IN NORTHERN IRELAND** – *Part 2 of 5. Do Paramilitaries Lie Awake at Night?* Discover how people become surrounded by fear and hatred as violence grows and home-grown paramilitaries begin taking control of Catholic and Protestant working-class communities. It is now 1972, and society is deeply segregated.

**10:00 ONCE UPON A TIME IN NORTHERN IRELAND** – *Part 3 of 5. So Many Broken Hearts.* Learn about the harrowing impact of the IRA hunger strike through three women’s stories: an IRA prisoner’s wife, a police officer’s wife, and a hunger striker’s daughter. Tit-for-tat killings, car bombs and assassinations are now routine.

30 Wednesday

**8:00 NOVA: ARCTIC GHOST SHIP** – Unravel the greatest mystery in Arctic exploration: the fate of the Franklin Expedition, which vanished 160 years ago while trying to chart the Northwest Passage. *NOVA* is on board as a Canadian team discovers one of Franklin’s lost ships, a vital new clue to the fate of the ill-starred expedition.

**9:00 ONCE UPON A TIME IN NORTHERN IRELAND** – *Part 4 of 5. Loose Talk Costs Lives.* Discover how tensions rise as police and the army infiltrate paramilitary organizations to gain intelligence in the late 1980s. No one can be trusted as fear and suspicion seep into all parts of daily life.

**10:00 ONCE UPON A TIME IN NORTHERN IRELAND** – *Part 5 of 5. The Dirty War.* Explore how politicians are propelled back toward peace talks. After decades of cyclical violence, a breakthrough is reached, and there is joy when the Good Friday Agreement is announced in 1998. However, peace comes at an enormous cost.

31 Thursday

**8:00 HOPE STREET, SERIES 2** – *Part 7 of 10.* Feathers are ruffled when Port Devine’s champion pigeons are stolen. Siobhan turns her attentions elsewhere as Finn falls apart.

**9:00 BANCROFT, SERIES 2** – *Part 3 of 4.* Taunted by one of the suspects, Elizabeth crosses the line. At rock bottom, Elizabeth must choose between professional and personal loyalties. Walker’s meddling fractures Bevan and Kamara’s allegiances to Elizabeth. Deserted by her allies, Elizabeth enters a dangerous game of cat and mouse.

**10:00 MIDSOMER MURDERS, SERIES 3: DEAD MAN’S ELEVEN** – *Part 2 of 2.* The bat used in the crime belongs to the landowner’s son but has no fingerprints on it. Barnaby and DS Troy probe a succession of sinister murders.

Via Antenna 26.3  
Comcast 266/1147  
Cox 801  
Fios 472  
RCN 38



The WETA PBS Kids channel offers a safe haven for young viewers, presenting educational programming 24 hours each day, seven days a week.

WEEKDAYS ON WETA PBS KIDS

- Clifford the Big Red Dog, 6am
- Elinor Wonders Why, 6:30am
- Dinosaur Train, 7am
- Pinkalicious & Peterrific, 7:30am, 8am
- Sesame Street, 8:30am, 9am
- Work It Out Wombats!, 9:30am
- Rosie’s Rules, 10am
- Daniel Tiger’s Neighborhood, 10:30am, 11am
- Curious George, 11:30am, 12n
- Donkey Hodie, 12:30pm, 1pm
- Work It Out Wombats!, 1:30pm
- Rosie’s Rules, 2pm
- Alma’s Way, 2:30pm, 3pm
- Nature Cat, 3:30pm, 4pm
- Arthur, 4:30pm, 5pm
- Odd Squad, 5:30pm
- Wild Kratts, 6pm, 6:30pm
- Molly of Denali, 7pm, 7:30pm
- Cyberchase, 8pm
- Hero Elementary, 8:30pm
- Xavier Riddle and the Secret Museum, 9pm
- Let’s Go Luna! 9:30pm

On Fridays:

- The Not-Too-Late Show with Elmo + Shorts, 6:30pm
- WETA PBS Kids Family Night, 7-10pm

Visit [weta.org/schedule](http://weta.org/schedule) for complete WETA PBS Kids listings.

WEEKDAYS ON WETA PBS, 8 AM – 3 PM

- Wild Kratts, 8am
- Curious George, 8:30am
- Daniel Tiger’s Neighborhood, 9am
- Rosie’s Rules, 9:30am
- Sesame Street, 10am
- Work It Out Wombats!, 10:30am
- Donkey Hodie, 11am
- Pinkalicious & Peterrific, 11:30am
- Elinor Wonders Why, 12n
- Nature Cat, 12:30pm
- Hero Elementary, 1pm
- Xavier Riddle and the Secret Museum, 1:30pm
- Molly of Denali, 2pm
- Alma’s Way, 2:30pm

SUNDAYS ON WETA PBS, 6 AM – 9 AM

- Mister Rogers’ Neighborhood, 6am
- Arthur, 6:30am
- Molly of Denali, 7am
- Alma’s Way, 7:30am
- Wild Kratts, 8:00am
- Curious George, 8:30am



Daniel Tiger



Via Antenna 26.2  
Comcast 265, 1146  
Cox 800  
Fios 474  
RCN 39, 602

British Television at Its Best

The WETA UK channel is devoted to the best in British television programming, presenting beloved classics and contemporary series around the clock, seven days a week. WETA UK offers a full schedule of fine entertainment programming – featuring drama, mystery and comedy – in addition to documentary series and news reports.

AUGUST P.M. PROGRAMMING ON WETA UK

VISIT [WETA.ORG/SCHEDULE](http://WETA.ORG/SCHEDULE) FOR A COMPLETE PROGRAM LINEUP

|         | SUNDAY                                    | MONDAY                                   | TUESDAY   | WEDNESDAY  | THURSDAY   | FRIDAY   | SATURDAY   |
|---------|---|--|---|--|--|--|--|
| 12pm    | Location, Location, Location              | Call the Midwife                         | Call the Midwife  | Call the Midwife   | Call the Midwife   | Call the Midwife   | Travelling Auctioneers   |
| 12:30pm |   |  |   |  |  |  |  |
| 1pm     | Travelling Auctioneers                    | A Place to Call Home                     | A Place to Call Home  | A Place to Call Home   | A Place to Call Home   | A Place to Call Home   | Hamish Macbeth, Series 1   |
| 1:30pm  |   |  |   |  |  |  |  |
| 2pm     | Celebrity Antiques Road Trip              | Celebrity Antiques Road Trip             | The Indian Doctor, Series 1 (starts 8/1)  | • Britain's Scenic Railways<br>• Martin Clunes: Islands of the Pacific (starts 8/23) | Midsomer Murders, Series 16 (starts 8/3)                           | Our House (starts 8/4)   | The Indian Doctor, Series 1 (starts 8/5)   |
| 2:30pm  |   |  |   |  |  |  |  |
| 3pm     | The Indian Doctor, Series 1               | Travelling Auctioneers                   | Doc Martin, Series 9  | • Father Brown, Series 9<br>• Midsomer Murders, Series 16 (starts 8/9)               | Midsomer Murders, Series 1   | Death in Paradise, Series 10 (starts 8/4)  | Midsomer Murders, Series 16 (starts 8/5)   |
| 3:30pm  |   |  |   |  |  |  |  |
| 4pm     | Death in Paradise, Series 10 (starts 8/6) | Location, Location, Location             | Miss Fisher's Murder Mysteries, Series 2 (Series 3 starts 8/8)  | Death in Paradise, Series 11 (Series 10 starts 8/9)                                  | • What to Do When Someone Dies<br>• Our House (starts 8/10)        | The Fall, Series 3   | Death in Paradise, Series 10 (starts 8/5)  |
| 4:30pm  |   |  |   |  |  |  |  |
| 5pm     | Our House (starts 8/6)                    | BBC News: The Context                    | BBC News: The Context   | BBC News: The Context  | BBC News: The Context  | BBC News: The Context  | • Britain's Scenic Railways<br>• Martin Clunes: Islands of the Pacific (starts 8/19)   |
| 5:30pm  |   | BBC News America                         | BBC News America  | BBC News America   | BBC News America   | BBC News America   |  |
| 6pm     | Cranford, Series 1 (starts 8/6)           | Open All Hours                           | Open All Hours  | Open All Hours   | Open All Hours   | Open All Hours   | Cranford, Series 1 (starts 8/5)  |
| 6:30pm  |   | As Time Goes By                          | As Time Goes By   | As Time Goes By  | As Time Goes By  | As Time Goes By  |  |
| 7pm     | Annika on Masterpiece                     | • Location, Location, Location           | • Location, Location, Location  | • Location, Location, Location   | • Location, Location, Location                                     | • Location, Location, Location   | Annika on Masterpiece  |
| 7:30pm  |   | • Secret Dealers (as of 8/14)            | • Secret Dealers (as of 8/15)   | • Secret Dealers (as of 8/16)  | • Secret Dealers (as of 8/10)                                      | • Secret Dealers (as of 8/11)  |  |
| 8pm     | Celebrity Antiques Road Trip              | The Indian Doctor, Series 1              | <u>Foreign Favourites</u><br>• 8pm: Luna & Sophie, Series 2<br>• 9pm: Astrid, Series 1<br>• 10pm: Our Miracle Years<br>• 10pm: Love, Inevitably (starts 8/22) | <b>Midsomer Murders, Series 16</b> (starts 8/2)<br><br>Midsomer Murders, Series 1    | • <b>Our House</b> (starts 8/3)<br><br>• Jamaica Inn (starts 8/31) | <u>Masterworks Showcase</u><br>• 8pm: Foyle's War, Series 8 (8/4, 8/11, 8/18)<br>• 8pm: <b>Foyle's War, Series 1</b> (starts 8/25)<br>• 9:30pm: <b>Cranford, Series 1</b> (starts 8/4; 9pm on 8/25)<br>• 10:30pm: Annika on Masterpiece (10pm on 8/25) | • Royal Flying Doctor Service<br>• <b>Murder, They Hope</b> (starts 8/26)<br><br>• Doc Martin, Series 9<br>• <b>Halifax: Retribution</b> (starts 8/26) |
| 8:30pm  |   |  |   |  |  |  |  |
| 9pm     | Travelling Auctioneers                    | Hamish Macbeth, Series 1                 |   | Agatha Christie's Poirot, Series 13  | Death in Paradise, Series 10 (starts 8/3)<br><br>BBC News          |  | • Mr. Bean (two episodes)<br>• Best of Mr. Bean (8/19); Story of Mr. Bean (8/26)   |
| 9:30pm  |   |  |   |  |  |  |  |
| 10pm    | Location, Location, Location              | Miss Fisher's Murder Mysteries, Series 3 |   |  | The Fall, Series 3 (starts 8/3)                                    |  | • Royal Flying Doctor Service<br>• Murder, They Hope   |
| 10:30pm |   |  |   |  |  |  |  |
| 11pm    | Open All Hours                            | BBC News                                 | BBC News  | BBC News   | • Our House<br>• Jamaica Inn (starts 8/31)                         | BBC News (11pm as of 8/25)   |  |
| 11:30pm |   | The Indian Doctor, Series 1              | Luna & Sophie, Series 2   | BBC News   |  |  |  |
|         | SUNDAY                                    | MONDAY                                   | TUESDAY   | WEDNESDAY  | THURSDAY   | FRIDAY   | SATURDAY   |



# WETA UK Highlights

## Our House

**Thursdays at 8 p.m. starting August 3 on WETA UK**

In a gripping three-part story of intrigue, conspiracy and betrayal, Fi Lawson — portrayed by Tuppence Middleton (*Downton Abbey*; *Dickensian*) — arrives home to find strangers moving into her house. Plunged into terror and confusion, she insists her home isn't for sale — how can this other family think the house is theirs? Discovering that her husband, Bram, has disappeared, Fi's panic rises as she realizes the secrets and lies have only just begun. But Bram is not the only one with things to hide. Martin Compston (*Line of Duty*, *Traces*) and Rupert Penry-Jones (*MI-5*, *Silk*, *Whitechapel*) co-star.



COURTESY/ITY



## Cranford

**Fridays at 9:30 p.m. starting August 4 on WETA UK;  
9 p.m. as of Aug. 25**

Oscar-winner Judi Dench leads a star-studded ensemble cast in this classic Elizabeth Gaskell adaptation — a rich and comic drama based on the author's novels about life in a small, early 19th-century English market town during an era of rapid social transformation as the Industrial Revolution gathers momentum. The poignant story follows the minor absurdities and major tragedies in the lives of Cranford residents during one year as railway construction from industrial Manchester draws nearer, bringing fears of change and disorder. In parallel, the arrival of a handsome London doctor with new medical methods causes a stir.

©NICK BRIGGS/BBC



## Martin Clunes: Islands of the Pacific

**Saturdays at 5 p.m. starting August 19 on WETA UK**

Martin Clunes (*Doc Martin*; *Islands of Australia*) embarks on an epic voyage in search of the real Pacific through the lives, culture and stories of the people he meets along the way. In Episode 1, Clunes experiences French Polynesia through French baguettes, coral wine, and an outrigger canoe. He swims with sharks, visits Marlon Brando's wildlife program, and sails to the remote Marquesas to meet a horse whisperer. Episode 2 finds Clunes exploring the southwest Pacific. In Vanuatu, he climbs an active volcano and meets a tribe that worships Prince Philip; in Tonga he meets a third-gender *leiti* and a princess; and in Fiji he visits an island singer — and a tribe tricked out of their lands. In Episode 3, Clunes explores the Galapagos, getting up close to wild creatures. He joins conservation expeditions; sees evolution in action; and visits an organic farm and the site of a murder mystery.

COURTESY AMERICAN PUBLIC TELEVISION



## Halifax: Retribution

**Saturdays at 9 p.m. starting August 26 on WETA UK**

A seven-episode 2020 Australian crime series stars Rebecca Gibney as Doctor Jane Halifax, a university professor who two decades prior worked as an investigator aiding police in cases that involved explorations of the mental state of suspects or victims. Halifax has enjoyed life in academia and a loving and stable family life with her musician husband Ben and stepdaughter Zoe, but events draw her back into the field to pursue her former vocation. When a sniper terrorizes Melbourne, the case become personal, and Halifax signs on to help the taskforce working to catch the killer. Anthony LaPaglia (*Without a Trace*) co-stars.



PBS



The premiere of the antiques series **Secret Dealers** was postponed from mid-July to August 10; the series will air weekdays at 7 p.m. Also this month: WETA UK reprises **Midsomer Murders**, **Series 16**, Wednesdays at 8 p.m. starting August 2, and Spanish-Italian romantic comedy **Love, Inevitably**, Tuesdays at 10 p.m. starting August 22.



WETA Metro is the streaming and broadcast television channel that features popular PBS programming and engaging content curated for our local audience, including offerings spotlighting the Metro D.C. community. The channel is simulcast with WETA PBS most evenings. Each day on WETA Metro, enjoy local programs, news and public affairs offerings (such as *PBS NewsHour*, weekdays at 6 p.m./11 p.m.), and lifestyle and cultural shows.

VISIT [WETA.ORG/SCHEDULE](https://weta.org/schedule) FOR A COMPLETE PROGRAM LINEUP

Stream at [weta.org/livestream](https://weta.org/livestream) or via the PBS App



FILM MOVEMENT

## POV: Children of the Mist

Saturday, August 5 at 8 p.m. on WETA Metro

Shortlisted for the Academy Awards, the 90-minute documentary film *Children of the Mist* traces the story of Di, a carefree 13-year-old girl coming of age in a remote indigenous Hmong community in the mist-shrouded mountains of Northwest Vietnam. As part of the first generation in her village with access to formal education, Di navigates the cultural and social challenges faced by young girls in her insular community while balancing inherited tradition with change. The 2021 film, directed by Vietnamese filmmaker Hà Lê Diễm, delves into the controversial but accepted tradition of “bride kidnapping” still practiced by the Hmong, one of Vietnam’s largest ethnic groups. Diễm engaged with Di’s family through three years to document Di’s journey.



YAHINE FIERRO; PHOTO COURTESY BABEL DOC

## Pacific Heartbeat, Series 12 – new episodes!

Saturdays, August 12 & 19 at 8 & 9 p.m. on WETA Metro

Anthology film series *Pacific Heartbeat* presents new Season 12 episodes illuminating the heart and soul of Pacific Island culture. *Ola Hou – Journey to New York Fashion Week* (Aug. 12) follows a Native Hawaiian fashion designer as she brings her designs to the prestigious New York City fashion event. *Island Cowgirls* (Aug. 12) highlights two Hawaiian cowgirls (*paniolo*) dedicating their lives to caring for their family ranches. *Daughters of the Waves* (Aug. 19) spotlights a young Polynesian surfer undaunted by Tahiti’s Teahupoo wave, considered one of the most dangerous in the world, and follows her and her sisters’ surfing aspirations. *Hawai’i’s Precious Resources* (Aug. 19) presents three short films that explore the delicate balance in Hawai’i’s ecosystems, spotlighting the islands’ tree snails and coconut palms. WETA Metro also presents previous *Pacific Heartbeat* films (Season 11), Saturdays, August 5, 12 and 19.



ROCKY MOUNTAIN NATIONAL PARK; ERIK STENSLAND

## Parks Stories

- *The Living Dream: 100 Years of Rocky Mountain National Park*
- *Glacier Park’s Night of the Grizzlies*

Thursday, August 31 at 8 & 9:30 p.m. on WETA Metro

Two 90-minute programs feature stories of iconic American public lands. The first (8 p.m.) presents a history of Colorado’s Rocky Mountain National Park. In celebration of RMNP’s centennial year, the film celebrates the park’s history by exploring how its rugged and pristine beauty has inspired generations of people. Narrated by filmmaker Nick Mollé, *The Living Dream* features the personal experiences of many historical figures involved in the shaping of the park. The second film (9:30 p.m.), visiting Montana’s Glacier National Park, presents an account of August 1967 bear attacks that killed two people and mauled another. The documentary explores the tragedies and how they came to influence the fate of the grizzly bear in the continental United States. Actor J.K. Simmons narrates.

Also on WETA Metro: British mystery series *Before We Die, Series 1* airs Sundays, August 13 & 20 at 8 p.m.; and the 2017 *Masterpiece* adaptation *Little Women* airs Sunday, August 27, 8-11 p.m.

The WETA World channel is a 24/7 news and public affairs service devoted to fact-based nonfiction programming, sharing broad perspectives, stories and ideas. WETA World informs and educates, presenting award-winning documentaries and domestic and international news broadcasts. The channel features a slate of original programs that examine issues with a diversity of voices and illuminate conflicts, movements and cultures around the globe.

VISIT [WETA.ORG/SCHEDULE](http://WETA.ORG/SCHEDULE) FOR A COMPLETE PROGRAM LINEUP

*Real Stories from Around the World*

## Forces of Nature

**Tuesdays, August 1, 8, 15 & 22 at 9 p.m. on WETA World**

This month, WETA World presents more than 100 programs spotlighting nature and the environment. Among them is the four-part 2016 BBC and PBS miniseries **Forces of Nature**, which explores the forces that keep Earth on the move and shape the natural world. Each episode illustrates how we experience Earth's forces: **Shape** (Aug. 1) spotlights how can see the shadows of forces in the shapes of nature that surround us. **Elements** (Aug. 8) examines how our planet's ingredients, the chemical elements, came together to make our planet a living world. **Color** (Aug. 15) highlights how, by understanding the creation of Earth's colors and the energy they carry, we can learn the secret language of the planet. **Motion** (Aug. 22) delves into how the forces of nature have kept Earth on the move since it was formed. Though we can't feel the motion, we experience the consequences — from tidal bores to hurricanes and more.

MAASAI MAN ON THE SERENGETI, COURTESY ALEX RANKEN/BBC



## Rivers of Life

**Wednesday, August 16, 7-10 p.m. on WETA World**

A miniseries from BBC and PBS featuring breathtaking photography spotlights great rivers of the world. A three-part 2022 series (*Season 2*) from this landmark production — airing 7-10 p.m. on Wednesday, August 16 — explores Africa's wildest river, the **Zambezi**; Europe's **Danube**, which travels through more countries than any other river; and North America's great frozen river, the **Yukon**. Journey from source to mouth and travel through awe-inspiring landscapes to discover the spectacular wildlife and fascinating people that thrive along these great rivers. *Season 1* episodes, focusing on the **Nile**, the world's longest river; the **Amazon**, the greatest river system on Earth; and the **Mississippi**, whose fingers stretch into nearly half the USA, airs Tuesday, August 22, 2- 5 p.m. on WETA World.

BBC



## Doc World: Afghanistan: The Wounded Land

**Sundays at 10 p.m. in August on WETA World; stream with WETA Passport**

On the anniversary of the U.S. withdrawal from Afghanistan, international documentary series *Doc World* features an encore presentation of a four-part recent history of the country. Khaled Hosseini ("The Kite Runner" author) narrates. Episode 1: **Kingdom** (Aug. 6) explores how in the 1960s, Afghanistan was divided between a westernized elite and a traditional, largely poor majority of the population; a communist revolution set these contradictions on fire. Episode 2: **Jihad** (Aug. 13) spotlights the 1979 Soviet invasion of the country and resulting period of conflict. Episode 3: **Taliban** (Aug. 20) examines the period after the Soviet army left Afghanistan, including conflict between Mujahedeen commanders and the emergence of the Taliban. Episode 4: **Trap** (Aug. 27) explores how, following 9/11 and the overthrow of the Taliban, an international coalition tried to bring peace and democracy to Afghanistan.

COURTESY GRH





## On From the Top: Liszt, a Young Pianist & New Music

Sunday, August 13 at 6 p.m.

Each Sunday, *From the Top* celebrates stories of talented, young classically trained musicians and presents their recitals. This month, some of the most fun music written for violin is performed brilliantly on the August 13 broadcast by 15-year-old violinist Anais Feller of San Diego, California. She is joined by a talented young pianist, Taige Wang, from Irvine, California, and other youth musicians performing challenging new repertoire. Feller performs excerpts from *Zigeunerweisen/Gypsy Airs* by Pablo de Sarasate; Wang performs *Hungarian Rhapsody No. 11, S. 244 in A minor* by Franz Liszt; and other young artists perform works for saxophone (by Roberto Molinelli); oboe (by William Grant Still); and marimba and clarinet (a duet by Derrick Spiva Jr.). Tune in to *From the Top* each Sunday at 6 p.m. on WETA Classical.



COURTESY FROM THE TOP



Johannes Brahms

C. BRASCH, BERLIN, 1889; NEW YORK PUBLIC LIB. ARCHIVES

## Choral Brahms on Choral Showcase

Sunday, August 20 at 9 p.m.

This month, Sunday-night WETA Classical program *Choral Showcase* dives deep into the works of Johannes Brahms, *beyond* his masterpiece — and one of the best-loved choral works of all time — *German Requiem*. The program will explore his sacred motets, *Liebeslieder* or “Love Song” waltzes, select songs for women’s choir, and the *Schicksalslied*, or “Song of Destiny,” for chorus and orchestra. One of the highlights will be the *Geistliches Lied, Op. 30*, a work of profound solace and consolation much like the *German Requiem*. In other *Choral Showcase* programs this month, enjoy Stravinsky and Rautavaara “bird” works on August 6; Evensong compositions by Tallis, Fauré and Durufle on August 27; and more. Tune in to *Choral Showcase* each Sunday at 9 p.m. on WETA Classical.

## Opera Matinee Features Bellini's La Sonnambula

Saturday, August 26 at 1 p.m.

Weekly Saturday broadcast *Opera Matinee* continues its series of performances with *La Sonnambula* (“The Sleepwalker”) by Vincenzo Bellini on August 26. The *bel canto* beauty follows the troubles of a woman beset by somnambulism and caught in a web of misunderstanding. The production is from Belgium’s Opéra Royal de Wallonie, featuring Jessica Pratt and René Barbera in the principal roles, and led by Giampaolo Bisanti. Other presentations this month include a production by The Royal Opera (London) of Alban Berg’s *Wozzeck* (August 5), a powerful story of a destitute soldier’s undoing and demise; and a Budapest Festival Orchestra production of Benjamin Britten’s *Turn of the Screw* (August 19), a ghost story-turned-opera about a household haunted by previous caregivers — based on the novella by Henry James. Tune in to *Opera Matinee* each Saturday at 1 p.m. on WETA Classical.



TOMASZ GASIOR, CREATIVE COMMONS ATTRIB-SHARE Alike 4.0 INTL

Bust of Vincenzo Bellini; garden of Villa Bellini

## Enjoy Vocal Classical Music on VivaLaVoce

WETA Classical’s service VivaLaVoce presents classical vocal music in all its forms, from the Middle Ages to the present, 24 hours each day. Featuring opera (including a daily opera at 8 p.m.), choral music, and art song, VivaLaVoce can be heard on HD channel 90.9-2 and online through the audio player on [wetaclassical.org](http://wetaclassical.org).



# Classical for Washington

## Spotlight on... Evening On-Air Host James Jacobs

**W**ETA Classical evening host James Jacobs blames his love of classical music on Stanley Kubrick. “My older brother Ben saw *2001: A Space Odyssey* when it came out — he was twelve, I was six,” Jacobs said. “He loved the music and purchased what he thought was the original soundtrack but was *actually* a complete performance of Richard Strauss’s tone poem *Also Sprach Zarathustra*. This led to his taking a deep dive into classical music via recordings from the local library, and I would sit and listen to them with him.”

Jacobs was hooked. He read every book about classical music he could find and listened to every record he could get his hands on. He even borrowed his brother’s walkie talkies and started broadcasting classical music radio programs when he was nine. Fortunately, his family moved to a school district that provided instruments and free music instruction, so he began playing the cello two weeks after his tenth birthday.

As he grew older, he found himself turning to classical music for solace. “Part of the reason my brother and I bonded so much is that our father died a few months before Ben attended that fateful screening of *2001*, and that was just one in a series of tragedies and setbacks my family endured. I turned to classical music as a plane of existence that provided order and beauty with which reality could not compete but could meekly aspire.”

He found Beethoven’s story particularly compelling and relatable.

“Everything about his life was so broken, and he was all too aware of his own fallibilities and inability to sustain relationships, but on the plane of music he was triumphant and demonstrated the kind of person he could have been if not for all the damage. I remember as a kid repeatedly listening to the slow movement of Beethoven’s *String Quartet op. 132*, which he wrote as a kind of offering to the cosmos in gratitude for recovering from an illness. Other works I was obsessed with in my youth were Bach’s *St. Matthew Passion*,

the clarinet quintets of Mozart and Brahms, and Stravinsky’s *The Rite of Spring*.”

As he grew up, Jacobs’ musical interests

expanded to incorporate artists such as John Coltrane, Bob Dylan and the Bulgarian Women’s Chorus. Even though he loved the cello, he soon branched off into conducting, composing, improvisation, rock, and klezmer music. He eventually decided that his true gift didn’t lie in creating music, but in being an educator and ambassador for it.

Jacobs was on the faculty of the Brooklyn Conservatory for eight years starting in 1999, during which he helped to co-produce a music education radio show for kids. That was the first step in a public media career that would bring him to WNYE and WNYC in New York, to WGBH in Boston, and finally to WETA in 2014. Along his journey in music, he’s been conducted by Gustav Leonhardt and Mstislav Rostropovich, written scores for documentaries produced by HBO and

PBS, appeared on *A Prairie Home Companion*, and taught hundreds of students who inspire him.

Today, among his many interests, Jacobs works in sound design, and his projects include collaborating with a theater collective based in Kolkata, India. He recently worked as a coach and conductor with a teen opera company in Massachusetts, and he hopes to continue those endeavors. He’s also a prolific writer, with pieces published in *The Washington Post* and *Moment Magazine* as well as WETA’s online blog *Classical Score*.



## WETA Passport

Stream *Masterpiece* dramas and much more with WETA Passport, our popular member benefit that provides you with access to an extensive library of the best public television programs! You're ready to activate now at [pbs.org/passport](https://pbs.org/passport) if you see a four-word activation code above your name and address at left; or go to [weta.org/passport](https://weta.org/passport) to make your qualifying donation of \$60 (or \$5 monthly) to start enjoying WETA Passport today.



## New Drama Seasons in September!

***Van der Valk, Season 3 on Masterpiece***

***Professor T, Season 2***

***Unforgotten, Season 5 on Masterpiece***

Binge-watch on the PBS App with our most popular member benefit, WETA Passport, starting the night of the broadcast premieres, Sept. 3. Stream previous seasons now to catch up!

Visit [weta.org/passport](https://weta.org/passport) for more information.

**WETA**  **Passport**

Roku • Apple TV • Fire TV • Samsung • Vizio • Mobile • Computer • and many more