

WETA

NOVEMBER 2022
MAGAZINE FOR MEMBERS



Vote 2022: Election Night Special

*Judy Woodruff anchors PBS NewsHour
team coverage on November 8*

**Plus local high school quiz show *It's Academic* comes to WETA,
and new episodes of *WETA Arts* and *Signature Dish* premiere**

WETA Focus



On November 8, Americans throughout the country will go to the polls to cast their ballots in the midterm elections. The results will be awaited eagerly by the world, for control of Congress and the legislative agenda is at stake, and Americans' decisions will offer a snapshot of national sentiment with presidential elections two years away. In these momentous times, to stay up to date on developments Americans can turn to *PBS NewsHour* for the solid, reliable reporting that has made it the most objective news program on television.

Produced at WETA, *PBS NewsHour* is the marquee news broadcast for PBS and the centerpiece of public television's fundamental mission to keep the American people informed. We have long embraced the responsibility and tradition of fostering an informed citizenry by serving the nation with outstanding journalism that includes coverage of the issues, the candidates

and the campaigns. Complementing *NewsHour*'s weekday reports are *PBS News Weekend* Saturday and Sunday reports, and Friday public affairs series *Washington Week*, which presents reporting and analysis from journalists on the beat.

To learn the election results as they become available on November 8, tune in for comprehensive *NewsHour* coverage that follows the returns into the night, reports breaking news and offers insight into what the outcomes mean for the country. Anchor and managing editor Judy Woodruff leads the team coverage; learn more on the page opposite this column.

Recently, Judy was named recipient of an Emmy Award for Lifetime Achievement in Television News from the National Academy of Television Arts & Sciences. The special award, bestowed in a ceremony earlier this fall, recognizes her pioneering five-decade career in journalism and long tenure at *PBS NewsHour*. On hand to welcome Judy to the stage was distinguished journalist Robert MacNeil, who co-founded and co-anchored the newscast with Jim Lehrer.

This award is an honor so well deserved — Judy is a deeply respected, consummate professional and a wonderful mentor and friend to legions of colleagues. She brings an extraordinary standard of excellence to her journalism, inspiring all those around her through her skill and acumen, leadership and grace, and courage and enormous integrity. We are tremendously fortunate to enjoy the results of her work each day.

Beyond election coverage in November, we present new installments of our local productions *Signature Dish* and *WETA Arts* — and we are delighted to welcome the local student quiz show *It's Academic* to our air as of October 29. Showcasing and celebrating the achievements and erudition of high school youths in our community, the long-running program is a perfect addition to our educational offerings. Learn more about WETA's local programming on pages 2-3. Also enjoy our other superb content this month, from gripping dramas and fascinating history documentaries to dazzling nature films and intriguing science presentations.

Thank you for your ongoing support of our service to the public.



Judy Woodruff with Robert MacNeil

Sharon Percy Rockefeller

Sharon Percy Rockefeller, president
and chief executive officer, WETA

WETA – ON THE AIR & ONLINE

WETA PBS

26.1 via antenna
Comcast 26, 219, 800, 1026
Cox 26, 1003, 1026
DirecTV 26, 26-1, Stream
Dish 8076 Fios 26, 526
RCN 26, 613

WETA Metro

26.5 via antenna
weta.org/livestream
PBS Video App
YouTube TV
Fios 470
RCN 599

WETA UK

26.2 via antenna
Comcast 265, 1146
Cox 800
Fios 474
RCN 39, 602

WETA World

26.4 via antenna
Comcast 270, 1148
Cox 802
Fios 475
RCN 37

COVER: JUDY WOODRUFF; PHOTO BY TONY POWELL

WETA TV Highlights



**PBS NewsHour special coverage
airs Tuesday, Nov. 8 at 8 p.m. on WETA PBS &
WETA Metro; stream at pbs.org/newshour**

With control of Congress at stake, and results serving as an early bellwether of national sentiment regarding elections two years away, the hotly contested 2022 midterm elections include many close and closely watched races. To stay abreast of developments, on Tuesday, November 8 after the regular broadcast of PBS NewsHour, tune in to *Vote 2022: Election Night Special* for live NewsHour team coverage beginning at 8 p.m. on WETA PBS and WETA Metro and PBS stations nationwide. PBS NewsHour also presents the coverage at the

website pbs.org/newshour and via Twitter, Facebook and YouTube.

Vote 2022: Election Night Special will present reports on the returns and breaking developments into the night. PBS NewsHour's coverage will be anchored by managing editor **Judy Woodruff**, who will be joined by a panel of analysts and campaign strategists including *New York Times* op-ed columnist **David Brooks**; *Washington Post* columnist **Gary Abernathy**; **Amy Walter**, *Cook Political Report* editor-in-chief; **Marc Short**, former chief of staff to former Vice President Mike Pence; and **Faiz Shakir**, former campaign manager for Bernie Sanders for President.

Additional reporting will be provided throughout the night by NewsHour's chief correspondent **Amna Nawaz**, chief Washington correspondent **Geoff Bennett**, Capitol Hill correspondent **Lisa Desjardins**, White House correspondent **Laura Barrón-López**, PBS NewsHour West anchor **Stephanie Sy**, correspondent **William Brangham**, and PBS station reporters from across the country.

Previewing NewsHour's midterm election coverage, digital anchor **Nicole Ellis** will host an online pre-show prior to the PBS NewsHour broadcast on November 8.

PBS NewsHour is the primary daily, breaking and special news producer for the Public Broadcasting Service. WETA subsidiary NewsHour Productions produces PBS NewsHour, PBS News Weekend and Washington Week — and the news operation presents robust news resources across digital and social media platforms.

Funding for *Vote 2022: Election Night Special* is provided by the Corporation for Public Broadcasting and public television viewers.

The Pilgrims: American Experience

**WETA co-production airs Sat., Nov. 19 at 8 p.m. on WETA PBS;
Nov. 24 at 8 p.m. on WETA Metro; stream on the PBS App**

In an encore presentation, WETA reprises a production from director Ric Burns that spotlights the small group of religious radicals whose determination to establish a separatist religious community planted the seeds for America's founding. The Pilgrims brought with them ideas and practices that would help to form the political and cultural DNA of America, but the history of their colony has been shrouded in myth and misconception.

The two-hour 2015 documentary *The Pilgrims*, co-produced by WETA and Steeplechase Films in association with the BBC and CTVC, brings to life the unvarnished story of America's early settlers. Oliver Platt narrates; and Roger Rees portrays William Bradford, the Plymouth Plantation governor who wrote the definitive history of the early Massachusetts colony. The program explores the forces and events that converged to propel the English settlers to the New World, follows the colony in its first decade, and examines the settlement's implications for the indigenous Wampanoag people. Following *The Pilgrims*, WETA features a film about the *Mayflower*.



For program and membership inquiries, visit weta.org or call 703-998-2724.

WETA PBS Kids

26.3 via antenna
Comcast 266, 1147
Cox 801
Fios 472
RCN 38

WETA Online

weta.org
weta.org/passport
weta.org/pbsapp
weta.org/learningmedia

WETA Classical

WETA 90.9 FM Washington, D.C.
WGMS 89.1 FM Hagerstown
wetaclassical.org
vivalavoce.org
WETA Classical App

New Local Programs on

New on *Signature Dish: Middle East Feast*

**Monday, Nov. 7 at 9 p.m. on WETA PBS,
8 p.m. on WETA Metro; stream on the PBS Video App**

WETA's production *Signature Dish* — spotlighting delicious signature offerings at restaurants around the region — wraps up Season 1 with a new episode in November that features the mouth-watering flavors of the Middle East. As in each episode of the series, host and producer Seth Tillman visits three establishments where, in addition to illuminating each eatery's "signature dish," he explores the background of each offering, celebrating the family traditions, cultural influences and unique flavors that make it special.

Middle East Feast features Seth sampling diverse flavors: He tastes a *lamb shank stew* at **Amoo's** in McLean, VA; the Egyptian dish *molokheya*, made with cornish hen, at **Fava Pot** in Falls Church, VA; and a delicious *shawarma pita* at **Muncheez**, a Lebanese street food destination in D.C.'s Dupont Circle. *Signature Dish: Middle East Feast* premieres Monday, November 7 on WETA PBS (9 p.m.) and WETA Metro (8 p.m.). After Season 1 wraps up, watch for reprised *Signature Dish* episodes on Monday nights.



Seth at Amoo's Restaurant with Chef Sebastian Oveysi

WETA Arts: Indian Dance, Tech Art & National Monuments

**Monday, Nov. 7 at 9:30 p.m. on WETA PBS,
8:30 p.m. on WETA Metro; stream on the PBS App**

WETA production *WETA Arts* this month celebrates local creativity in dance, technological sculpture and architecture. At the **Natyabhoomi School of Dance** in Potomac, Maryland, founder and instructor **Deepti Mukund Navile** guides students as they study a deeply spiritual, personal and rigorous South Indian dance form called *Bharatanatyam*. Thought to be 2,000 years old, this Indian classical dance form has a strong foothold among the D.C.-area's large population of people of Indian heritage. Also on the program, meet Mount Rainier-based **artist Chris Combs**, who creates electronics-based art objects — handmade and custom-fabricated hardware, software enclosures and sculptures — that embrace and question technology. And *WETA Arts* host **Felicia Curry** interviews award-winning architect **Thomas Luebke, Secretary of the U.S. Commission of Fine Arts**. Luebke shares the surprising history behind some of D.C.'s most beloved monuments and offers a preview of national monuments in progress and under discussion. The November *WETA Arts* episode premieres Monday, November 7 and repeats Monday, November 21.



Thomas Luebke



Neharika Govindarajan

Stream WETA's local productions via weta.org or on the PBS Video App

If you missed an episode of WETA house-hunting and neighborhood exploration series *If You Lived Here*; WETA restaurant exploration series *Signature Dish*; or arts and culture series *WETA Arts*, stream them anywhere, anytime on WETA's website and on the PBS Video App. Watch for new episodes of *If You Lived Here*, coming soon — Season 3 premieres January 9!



If You Lived Here (Hillcrest, D.C.)

weta.org/ifyoulivedhere • weta.org/signaturedish • weta.org/arts

WETA PBS & WETA Metro

IT'S ACADEMIC

**Local student quiz show
comes to WETA, airing
Saturdays at 10 a.m. and 7 p.m.
on WETA PBS & WETA Metro;
stream on the PBS Video App**



ROBIN TREPANIER/IT'S ACADEMIC

Host Hillary Howard on the set of *It's Academic*; the show begins airing on WETA on October 29.

Iconic local TV quiz show *It's Academic*, featuring talented high school students from around the D.C. metropolitan area, has found a new home at WETA, now airing each Saturday at 10 a.m. and 7 p.m. on WETA PBS and WETA Metro. The Emmy Award-winning program, promoting learning, teamwork, and friendly competition, spotlights the achievements of students from local schools through tests of knowledge in an array of academic categories.

More than 80 high schools from the Washington, D.C. region will participate in teams of three in the single-elimination knowledge tournament during the upcoming season — the program's 62nd on the air. McLean High School is the current defending champion. The program is currently produced on Zoom but next year will head back into the studio, where parents and family members, cheer squads and school mascots can join in the spirited fun.

It's Academic was launched in 1961 by producer Sophie Altman and broadcasted on NBC affiliate WRC-TV for more than 60 years; the Guinness Book of World Records recognizes the enduring program as the world's longest-running high school TV quiz show. WTOP anchor and Emmy Award-winning journalist Hillary Howard hosts the program, as she has done since 2011 when the baton passed to her with the retirement of original host Mac McGarry.

"*It's Academic* and WETA are a natural fit," said Howard. "They both were born in 1961. They both believed then, as now, that knowledge unlocks opportunity. For 61 years, they each invested in exceptional programming to educate our region's kids and promote love of learning," she added. "It's thrilling to help merge our legacies — and together — build a new one. There is no better partner."

Executive producers for *It's Academic* are Susan Altman (daughter of the show's creator) and David M. Rubenstein. The program is produced by Altman Productions, Inc. in cooperation with DMR Productions, LLC.

About the show, Miguel Monteverde, senior vice president and general manager of WETA Greater Washington, said, "It's finally where it probably should have been all along. It was a show that I grew up with and it's persisted to be an iconic program. Bringing the show to WETA was an easy decision; there's no show more locally focused than one that each season features 240 of some of our brightest kids, our future leaders, in an education-themed quiz show."

It's Academic joins WETA's vibrant slate of programming created locally and presented exclusively for Washington-area viewers. The first episode airs on Saturday, October 29, with four installments airing in November. The show airs Saturdays at 10 a.m. and 7 p.m. on WETA PBS and WETA Metro, repeating the following Monday at 3 p.m. on WETA PBS and 7 p.m. on WETA Metro. The program will also be available to stream on the PBS Video App and via WETA's website at weta.org/itsacademic.

Major funding for *It's Academic* is provided by MITRE.

Upcoming Teams Featured:

Oct. 29: Herndon, Washington-Liberty, W.T. Woodson

Nov. 5: Jackson-Reed, Walter Johnson, St. Stephens and St. Agnes

Nov. 12: Alexandria City, Landon, Eleanor Roosevelt

Nov. 19: Dominion, Sherwood, West Springfield

Nov. 26: Justice, Bishop O'Connell, St. Anselm's



Tutankhamun mask, Egypt

COURTESY SODRA FILMS

Tutankhamun: Allies & Enemies

Wed., Nov. 23 at 8 p.m. on WETA PBS & WETA Metro;
stream on the PBS Video App

A new two-hour documentary special marking the 100th anniversary of King Tutankhamun's tomb discovery investigates the life and legacy of the renowned Egyptian pharaoh. Filmed on location and led by filmmaker Hossam Aboul-Magd, *Tutankhamun: Allies & Enemies* features Egyptian researchers going beyond examining Tut's tomb and its priceless artifacts to share the pharaoh's story from his point of view and unpacking the short life of the "Boy King." In the program, lead archaeologist Dr. Yasmin El Shazly and photographer Mahmoud Rashad meet with historians, archaeologists and scientists to puzzle out historical inconsistencies and secrets surrounding Tut's childhood and family.

Using drone footage and computed tomography scans (CTs), the two-part program takes a closer look at King Tut's burial. The Egyptian team led by El Shazly offers special access to newly discovered tombs that shed light on new theories about the politics and intrigue of this dramatic period of seismic change

in Egyptian history. Journeying across Egypt from Cairo to Luxor, the film provides an in-depth exploration pursuing answers about King Tut, the powers and people that affected his life and death, and the legacy his reign left behind.

Tutankhamun: Allies & Enemies airs 8-10 p.m. on Nov. 23, followed by a 10 p.m. encore presentation of *Secrets of the Dead: Egypt's Darkest Hour*, which follows archaeologists examining a rare mass grave from the collapse of ancient Egypt's Old Kingdom. An additional program, *Secrets of the Dead: Decoding Hieroglyphics* (airing Nov. 2 and streaming on the PBS Video App) explores how ancient Egyptian hieroglyphics were translated.



COURTESY PATRICK ACUM/NET

Pyramid at Giza

Nazca Lines, Crypto and More on NOVA

Wednesdays at 9 p.m. on
WETA PBS & WETA Metro;
stream on the PBS Video App



Nazca Desert Mystery

COURTESY WGBH EDUCATIONAL FOUNDATION

This month, long-running science series NOVA presents three intriguing new episodes:

- *Nazca Desert Mystery* (Nov. 2) spotlights the Nazca lines, one of archaeology's greatest enigmas. Who created the dense network of crisscrossing lines, geometric shapes and animal figures etched across 200 square miles of Peruvian desert — and why? Ever since the lines were rediscovered in the 1920s, scholars and enthusiasts have raised countless theories about their

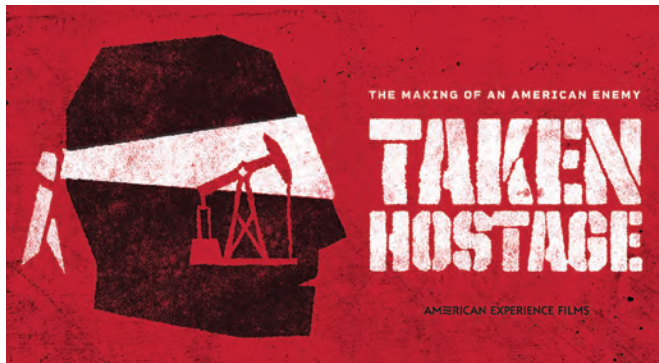
purpose. Now, recent finds of long-hidden lines and figures carved into the desert offer new clues to the origins and purpose behind these giant symbols.

• *Crypto Decoded* (Nov. 9) explains how, from Bitcoin to NFTs, crypto is making headlines. But what exactly is it, and how does it work? Experts go beyond the hype and skepticism to unravel the social and technological underpinnings of crypto — exploring how it came to be and why this new technology may revolutionize more than just money.

• *Zero to Infinity* (Nov. 16) examines how the concepts of zero and infinity revolutionized mathematics. These seemingly opposite, obvious and indispensable concepts are relatively recent human inventions. Discover the story of how these key ideas came to be — not just once, but many times over as different cultures invented and re-invented them across millennia.



Crypto Decoded



**The American Experience special airs
Mon.-Tues., Nov. 14-15 at 9 p.m.
on WETA PBS & WETA Metro;
stream on the PBS Video App**

A new two-part *American Experience* documentary spotlights the Iran Hostage Crisis, when 52 American diplomats, Marines and civilians were taken hostage at the American Embassy in Tehran on November 4, 1979. For the next 444 days, the world watched as the United States received a daily barrage of humiliation, vitriol and hatred

from a country that had long been one of America's closest allies. The crisis would transform both the U.S. and Iran and upend the focus and direction of American foreign policy.

Unfolding like a political thriller, the four-hour film *Taken Hostage* — from acclaimed filmmaker Robert Stone (*Chasing the Moon*) — also explores the backstory of how America became mired in the Middle East and the nation's role in igniting the firestorm that has consumed the most strategically important part of the world for the last 40 years.

Part 1 (Nov. 14) chronicles America's quarter-century of unwavering support for its ally, the Shah of Iran, despite his dictatorial and increasingly brutal and corrupt regime — and portrays in harrowing detail the violent Islamic revolution that overthrew the Shah in 1979, sending shockwaves around the world. Part 2 (Nov. 15) follows the holding of the hostages at the American embassy in Tehran by militant Islamic students, with the support and encouragement of the Iranian government led by Supreme Leader Ayatollah Khomeini.

The film details how the crisis degenerated into a foreign policy debacle. The Iran Hostage Crisis laid the groundwork for the modern 24-hour news cycle, inspired an escalating cycle of political terrorism, and undermined the presidency of Jimmy Carter.

Taken Hostage uses the candid, personal testimony of those whose lives were upended to tell the story of these dramatic, history-making events. Participants include former hostage Barry Rosen and his wife Barbara; pioneering foreign correspondents Hilary Brown and Carole Jerome; senior member of President Carter's national security team and longtime Iran expert Gary Sick; and Colonel James Q. Roberts, a member of a top-secret American commando unit, as the film reveals details of the failed attempt to rescue the hostages in a daring Special Forces operation.



Woodpeckers, Ocelots and Reindeer on *Nature*

**Wednesdays at 8 p.m. on WETA PBS & WETA Metro;
stream on the PBS Video App**

Natural history series *Nature* features several engaging new presentations in November:

- **Woodpeckers: The Hole Story** (Nov. 2) goes deep into the woods to explore the lives of a unique avian family. Woodpeckers come in 239 species and live on every continent except Antarctica and Australia, playing a powerful role in every ecosystem they inhabit. They appear in all shapes and sizes, each uniquely engineered for their particular lifestyles.

Filmmaker Ann Johnson Prum (*Nature: Super Hummingbirds*) explores what makes these birds so special through stories of woodpecker families across the world. Paul Giamatti narrates.

- **American Ocelot** (Nov. 9) tags along with wildlife filmmaker Ben Masters as he follows one of the United States' most endangered wild cats. Go deep into South Texas chaparral to meet the biologists studying the cats, the ranchers with the habitat, and the cats themselves. Through camera-trap cinematography, witness a never-before-seen glimpse into the struggle, love and determination required of a mother ocelot to raise her young successfully.

- Also tune in for encore presentation **Santa's Wild Home** (Nov. 16), which offers an intimate look at the wildlife of Lapland, a region in northern Finland that is home to reindeer, wolverines, eagles, wolves, brown bears and more.



Stream with WETA Passport



Stream your favorite shows with WETA Passport, a member benefit that offers access to a vast library of superb programs available for streaming on demand. To learn how to access programming with WETA Passport, visit weta.org/passport/FAQ.



Mr. Bean

In a classic comedy series, Rowan Atkinson stars as the quirky character always getting into embarrassing predicaments. See page 17.
Binge-watch as of November 1.



Murder, They Hope

A three-part comedy-murder caper features new adventures with characters Gemma and Terry from *Draper's Tours Mysteries*.
Binge-watch as of November 1.



River • A 2015 crime thriller series stars Stellan Skarsgård as DI John River, a London police officer with a brilliant but fragile mind, haunted by the murder victims whose secrets he must unlock. One of the voices in River's head is that of his late colleague, DS Jackie Stevenson, played by Nicola Walker. Lesley Manville portrays their boss Chief Inspector Chrissie Reid in a BAFTA-nominated performance.
Binge-watch 6 episodes with WETA Passport as of Nov. 1.

Astrid • A 2019 Franco-Belgian police drama, in French with English subtitles, follows an autistic woman who works in the judicial police's library and helps police detective Commander Raphaëlle solve complex cold cases. Astrid Nielsen (portrayed by Sara Mortensen) has Asperger's syndrome; with her near-photographic memory, she excels at analyzing investigation files. Binge-watch nine Series 1 episodes with WETA Passport as of Nov. 3.



Lovejoy • A 1986 BBC comedy-drama stars Ian McShane as a likable rogue antiques dealer who is always seeking a piece of the action but also aids those who are victims of injustice and deceit. In Season 1, Lovejoy takes on a new assistant, Eric. Lovejoy also meets Lady Jane Felsham — Phyllis Logan (Mrs. Hughes on *Downton Abbey*) — for the first time, and the two bond. Binge-watch 10 episodes with WETA Passport as of Oct. 27.

The Mayor of Casterbridge • A lavish period drama starring Ciarán Hinds and based on Thomas Hardy's novel spotlights a farmworker who, while drunk, sells his wife and child at a market, and then over decades turns his life around to earn wealth and respect as the Mayor of Casterbridge. His past returns to haunt him when he is reunited with his family with unexpected consequences. Binge-watch the pair of two-hour episodes with WETA Passport as of Oct. 27.



Visit weta.org/schedule for the most up-to-date schedule information.

 Denotes WETA productions, co-productions and presentations

| | 8:00 | | 8:30 | 9:00 | 9:30 | 10:00 | 10:30 |
|--------|--|--|------|---|--|--|--|
| 1 Tue | Finding Your Roots w/ Henry Louis Gates, Jr., Encore: <i>Flight</i> | | | Finding Your Roots w/ Henry Louis Gates, Jr., Encore: <i>Children of Exile</i> | | Frontline: Putin's War at Home | |
| 2 Wed | Nature: Woodpeckers: The Hole Story | | | NOVA: Nazca Desert Mystery | | Secrets of the Dead: Decoding Hieroglyphics | |
| 3 Thu | Sister Boniface Mysteries, Series 1 (Ep 6 of 10. <i>Song for the Dead</i>) | | | Broadchurch, Series 3 (Pt 1 of 8) | | The Hour, Series 2 (Pt 6 of 6. <i>Fallout</i>) | |
| 4 Fri | Washington Week | The David Rubenstein Show: Peer to Peer Conversations, Season 4 | | Great Performances: New York Philharmonic Reopening of David Geffen Hall | | | Antiques Roadshow Recut: Newport, Pt 3 |
| 5 Sat | Reconstruction: America After the Civil War (Pt 1 of 2) | | | | | Jack Taylor: The Enterprise | |
| 6 Sun | Miss Scarlet and The Duke, Series 2 on Masterpiece (Pt 4 of 6. <i>Angel of Inferno</i>) | | | Magpie Murders on Masterpiece (Pt 4 of 6) | | Annika on Masterpiece (Pt 4 of 6) | |
| 7 Mon | Antiques Roadshow: Vintage San Antonio, Hour 2 | | | Signature Dish: Middle East Feast | WETA Arts | Independent Lens: Move Me (to 11:30pm) | |
| 8 Tue | Vote 2022: Election Night Special (PBS NewsHour) | | | | | | |
| 9 Wed | Nature: American Ocelot | | | NOVA: Crypto Decoded | | Secrets of the Dead | |
| 10 Thu | Sister Boniface Mysteries, Series 1 (Ep 7 of 10. <i>Dem Bones</i>) | | | Broadchurch, Series 3 (Pts 2 & 3 of 8) | | | |
| 11 Fri | Washington Week | The David Rubenstein Show: Peer to Peer Conversations, Season 4 | | USO – For the Troops | | Songwriting with Soldiers | |
| 12 Sat | Reconstruction: America After the Civil War (Pt 2 of 2) | | | | | D-Day at Pointe-du-Hoc | |
| 13 Sun | Miss Scarlet and The Duke, Series 2 on Masterpiece (Pt 5 of 6. <i>Quarter to Midnight</i>) | | | Magpie Murders on Masterpiece (Pt 5 of 6) | | Annika on Masterpiece (Pt 5 of 6) | |
| 14 Mon | Antiques Roadshow: Junk in the Trunk 11 | | | Taken Hostage: American Experience (Pt 1 of 2) | | | |
| 15 Tue | Finding Your Roots w/ Henry Louis Gates, Jr., Encore: <i>Songs of the Past</i> | | | Taken Hostage: American Experience (Pt 2 of 2) | | | |
| 16 Wed | Nature: Santa's Wild Home | | | NOVA: Zero to Infinity | | Secrets of the Dead: The First Circle of Stonehenge | |
| 17 Thu | Sister Boniface Mysteries, Series 1 (Ep 8 of 10. <i>Queen of the Kitchen</i>) | | | Broadchurch, Series 3 (Pts 4 & 5 of 8) | | | |
| 18 Fri | Washington Week | The David Rubenstein Show: Peer to Peer Conversations, Season 4 | | Next at the Kennedy Center: A Joni Mitchell Songbook | | Brian Wilson: Long Promised Road: American Masters (to 11:30pm) | |
| 19 Sat | The Pilgrims: American Experience | | | | | The World's Greatest Ships – <i>The Mayflower</i> | |
| 20 Sun | Miss Scarlet and The Duke, Series 2 on Masterpiece (Pt 6 of 6. <i>The Proposal</i>) | | | Magpie Murders on Masterpiece (Pt 6 of 6) | | Annika on Masterpiece (Pt 6 of 6) | |
| 21 Mon | Antiques Roadshow: Extraordinary Finds | | | Signature Dish, Encore: Seafood Standouts | WETA Arts | POV: Midwives (to 11:30pm) | |
| 22 Tue | Finding Your Roots w/ Henry Louis Gates, Jr., Encore: <i>Watchmen</i> | | | Buffy Sainte-Marie: Carry It On: American Masters | | | |
| 23 Wed | Tutankhamun: Allies & Enemies (Pt 1 of 2) | | | Tutankhamun: Allies & Enemies (Pt 2 of 2) | | Secrets of the Dead: Egypt's Darkest Hour | |
| 24 Thu | Sister Boniface Mysteries, Series 1 (Ep 9 of 10. <i>Sister Town</i>) | | | Broadchurch, Series 3 (Pts 6 & 7 of 8) | | | |
| 25 Fri | Washington Week | Happy Birthday Mr. Bean | | | | Frank Lloyd Wright: The Man Who Built America | |
| 26 Sat | Becoming Frederick Douglass | | | | My Music: John Sebastian Presents: Folk Rewind | | |
| 27 Sun | (from 1pm:) Miss Scarlet and The Duke, Series 2 on Masterpiece marathon | | | Miss Scarlet and The Duke: Secrets Revealed | | | Doobie Brothers with Michael McDonald (to 12m) |
| 28 Mon | My Music: Burt Bacharach's Best | | | | Signature Dish, Encore: Southern Comforts | Happy Birthday Mr. Bean (to 11:30pm) | |
| 29 Tue | Mr. Bean (10 episodes, 8pm – 1am) | | | | | | |
| 30 Wed | Great Performances: Josh Groban's Great Big Radio City Show | | | | | Rick Steves' European Christmas (to 12m) | |
| | 8:00 | 8:30 | 9:00 | 9:30 | 10:00 | 10:30 | |

PBS NewsHour airs weeknights at 7 p.m.
PBS News Weekend airs Sat/Sun at 6 p.m.

Amanpour and Company airs late weeknights (check listings).

TV Listings

WETA PBS in November



Listings are accurate as of press time. For latest schedules, visit weta.org/schedule or call 703-998-2724.

WETA PBS is devoted to children's educational programming 8 a.m.-3 p.m., Monday-Friday. For 24 hours of children's programming each day, tune in to the WETA PBS Kids channel. See page 15 for information.

Program Key

Blue type – WETA productions, co-productions and presentations.

R – Repeat of recent programming.



FINDING YOUR ROOTS WITH HENRY LOUIS GATES, JR.
A WETA CO-PRODUCTION

Tuesdays, Nov. 1, 15 & 22 at 8 p.m. on WETA PBS & WETA Metro
WETA features more encore episodes of the acclaimed genealogy series *Finding Your Roots with Henry Louis Gates, Jr.* this month. New Season 9 episodes of the WETA production premiere starting Jan. 3.

1 Tuesday

WEEKDAYS IN NOVEMBER:

6AM NHK NEWSLINE

6:30AM BBC WORLD NEWS

7AM (Mondays:) PBS NEWS WEEKEND

7:30 (Mondays:) WASHINGTON WEEK – R

7AM (Tuesdays-Saturdays:) PBS NEWS HOUR – R

8AM-3PM WETA KIDS PROGRAMMING

3PM (Mondays:) IT'S ACADEMIC

5PM AMANPOUR AND COMPANY – Rpt of previous night

6PM BBC WORLD NEWS – BBC World News Outside Source

(6pm, Mon-Thur); BBC World News Today (6pm, Fri)

6:30 BBC WORLD NEWS AMERICA

7:00 PBS NEWS HOUR – Each weeknight, the WETA production provides in-depth analysis of current events with a news summary, live interviews and discussions of domestic and international issues. Judy Woodruff anchors. Visit pbs.org/newshour. Rpts next day, 7am

8:00 FINDING YOUR ROOTS WITH HENRY LOUIS GATES, JR. –

In this WETA co-production, join Harvard scholar Henry Louis Gates, Jr., as he delves into the genealogy of famous Americans. Encore: *Flight*. Gates meets actors Scarlett Johansson and Lupita Nyong'o and chef Lidia Bastianich, whose families crisscrossed the globe to escape oppression and find opportunity, leaving the three with questions about those who stayed behind.

Repeats Sat 11/5, 11pm

9:00 FINDING YOUR ROOTS WITH HENRY LOUIS GATES, JR. –

Encore: *Children of Exile*. Gates retraces the ancestral journeys of David Chang and Raul Esparza – whose families fled their homelands – leading the two to find lost parts of themselves along the way. Repeats Sat 11/12, 11pm

10:00 FRONTLINE: PUTIN'S WAR AT HOME – Defiant Russians push back against Putin's crackdown on critics of the war in Ukraine. *Frontline* explores how, facing arrest and imprisonment, activists and journalists are refusing to stay silent and are protesting the Kremlin's war effort.

11:00 AMANPOUR AND COMPANY – Capping primetime programming each weeknight, Christiane Amanpour leads conversations with global thought leaders on contemporary issues. Repeats next weekday, 5pm

2 Wednesday

8:00 NATURE: WOODPECKERS: THE HOLE STORY – Get an intimate look at what makes woodpeckers so special. Explore their unique evolutionary journey and the powerful role they play in every ecosystem except Antarctica and Australia.

9:00 NOVA: NAZCA DESERT MYSTERY – Who created the Nazca lines, one of archaeology's greatest enigmas, and why? Recent finds of long-hidden lines and figures etched into the Peruvian desert offer new clues to the origins and purpose behind these giant symbols.

10:00 SECRETS OF THE DEAD: DECODING HIEROGLYPHICS – Learn how ancient Egyptian hieroglyphics were first translated 200 years ago and explore the archaeological work being done in Egypt now to understand one of the most important scribes. Repeats Sun 11/6, 4pm

3 Thursday

8:00 SISTER BONIFACE MYSTERIES – A light-hearted 2022 murder mystery series stars Lorna Watson as a nun who cracks cases in the Cotswolds during the 1960s. *Episode 6 of 10. Song for the Dead*. Sister Boniface investigates the death of teenage heartthrobs The Queenmakers' lead singer; Peggy struggles with the loss of her hero.

9:00 BROADCASTCHURCH, SERIES 3 – DI Alec Hardy and DS Ellie Miller are called to investigate a serious sexual assault. *Part 1 of 8*. The initial forensics report confirms police suspicions that this was not an opportunistic attack, it was planned. Hardy concludes that they have a serious predator at large in the town – who may strike again.

10:00 THE HOUR, SERIES 2 – Part 6 of 6. Fallout. Following the raid, Hector is mired in a public scandal, and the newsroom rushes to expose Cilenti's blackmail scheme and the nuclear profiteering – with help from surprising sources. As the broadcast nears, Freddie's persistence finally catches up with him.

4 Friday

8:00 WASHINGTON WEEK – WETA's weekly production, moderated by Yamiche Alcindor, presents a roundtable



Thursdays at 8 p.m. on WETA PBS

Sister Boniface Mysteries continues on WETA Thriller Thursdays, starring Lorna Watson as a sleuthing nun who probes cases with local police detectives Felix (Jerry Iwu, left) and Sam (Max Brown).



CHRIS LEE

Friday, Nov. 4 at 9 p.m. on WETA PBS & WETA Metro
Great Performances: New York Philharmonic Reopening of David Geffen Hall presents the renowned ensemble performing Beethoven's 9th Symphony in the newly renovated venue. Above: Music Director Jaap van Zweden leads a rehearsal.

discussion with award-winning journalists who provide reporting and analysis of the major news stories from the nation's capital. Visit pbs.org/washingtonweek.

Repeats Sat 11/5, 6am, 6:30pm; Mon 11/7, 7:30am

8:30 THE DAVID RUBENSTEIN SHOW: PEER TO PEER CONVERSATIONS, SEASON 4 – In a new season of episodes, the renowned Washington, D.C.-based financier and philanthropist explores successful leadership through interviews with influential people in prominent fields of endeavor. *Episode 9 of 15. Diane von Furstenberg, Fashion Designer.* **Repeats Sun 11/6, 6:30pm**

9:00 GREAT PERFORMANCES: NEW YORK PHILHARMONIC REOPENING OF DAVID GEFFEN HALL – The New York Philharmonic celebrates the reopening of its fully renovated home at Lincoln Center's David Geffen Hall with a triumphant performance of Beethoven's 9th Symphony, conducted by Music Director Jaap van Zweden. Also featured is the world premiere of a NYPhil commission by Puerto Rican composer Angélica Negrón.

10:30 ANTIQUES ROADSHOW RECUT: NEWPORT, PART 3

5 Saturday

6AM WASHINGTON WEEK – R

6:30 FIRING LINE WITH MARGARET HOOVER – R

7AM PBS NEWSHOUR – R

8AM JOSEPH ROSENDO'S TRAVELSCOPE

8:30 RICK STEVES' EUROPE

9AM THIS OLD HOUSE + ASK THIS OLD HOUSE

10:00 IT'S ACADEMIC – NOW ON WETA PBS & WETA METRO! Weekly, Saturdays at 10 a.m./7 p.m.; see Saturday 7 p.m. listings. Stream on the PBS Video App. **Repeats Mondays, 3pm on WETA PBS; 7pm on WETA Metro**

10:30 MOTOR WEEK

11AM HOW SHE ROLLS

11:30 KEVIN BELTON'S COOKIN' LOUISIANA

12N A CHEF'S LIFE

12:30 CHRISTOPHER KIMBALL'S MILK STREET TELEVISION

1:00 NICK STELLINO: STORYTELLER

1:30 LIDIA'S KITCHEN

2:00 IN JULIA'S KITCHEN WITH MASTER CHEFS

2:30 SARA'S WEEKNIGHT MEALS

3:00 JOANNE WEIR'S PLATES AND PLACES

3:30 NEW SCANDINAVIAN COOKING

4:00 COOK'S COUNTRY FROM AMERICA'S TEST KITCHEN

4:30 AMERICA'S TEST KITCHEN FROM COOK'S ILLUSTRATED

5:00 PATI'S MEXICAN TABLE

5:30 SAMANTHA BROWN'S PLACES TO LOVE

6:00 PBS NEWS WEEKEND – Geoff Bennett anchors.

6:30 WASHINGTON WEEK – R

7:00 IT'S ACADEMIC – NOW ON WETA PBS & WETA METRO! Weekly, Saturdays at 10 a.m./7 p.m.; stream on the PBS Video App. The longest-running high school TV quiz show in the world showcases the academic achievements of local D.C.-area high school students, spotlighting learning, teamwork and friendly competition. Emmy Award-winning journalist Hillary Howard hosts. Competing this week are students from Jackson-Reed High School, Walter Johnson High School, and St. Stephens and St. Agnes School. **Repeats Mondays, 3pm on WETA PBS; 7pm on WETA Metro**

7:30 WE THE YOUNG PEOPLE: MOMENTS OF TRUTH – Student Reporting Labs (SRL), an education program of WETA's *PBS NewsHour*, presents a special focused on young people and what is at stake for them in the 2022 U.S. midterm elections. The program is hosted by SRL teen reporters Tiffany Rodriguez of Philadelphia and Berto Suarez of Rockville, Maryland. **Rpts Sun 11/6, 3:30pm**

8:00 RECONSTRUCTION: AMERICA AFTER THE CIVIL WAR – In this WETA co-production, join Harvard scholar Henry Louis Gates, Jr. for an exploration of the transformative years following the Civil War, when the nation struggled to rebuild itself in the face of profound loss, massive destruction and revolutionary social change. *Part 1 of 2.* The aftermath of the Civil War was a bewildering, exhilarating and terrifying time; for African Americans, despite hard-won freedom, support for their social, economic and political gains did not last. **Repeats tonight, 12m; Sun 11/6, 11pm**

10:00 JACK TAYLOR: THE ENTERPRISE – Jack Taylor heeded his country's call during World War II; in 1942, he enlisted at the age of 20 and served as a Navy Hellcat pilot in the skies over the South Pacific. In this film narrated by Gary Sinise, learn the story of the decorated veteran's service during the war and the lessons he carried home as he established one of America's most successful post-war companies.

11:00 FINDING YOUR ROOTS WITH HENRY LOUIS GATES, JR. – Flight. R

12M RECONSTRUCTION: AMERICA AFTER THE CIVIL WAR – Part 1 of 2. R

6 Sunday

6AM-9AM WETA KIDS PROGRAMMING

9AM WHITE HOUSE CHRONICLE

9:30 TO THE CONTRARY WITH BONNIE ERBE

10AM THIS IS AMERICA AND THE WORLD WITH DENNIS WHOLEY

10:30 THE OPEN MIND

11AM FIRING LINE WITH MARGARET HOOVER – **Repeats Saturdays, 6:30am**

11:30 TO DINE FOR WITH KATE SULLIVAN

12N GREAT PERFORMANCES AT THE MET: HAMLET – Nicholas Carter makes his Met debut as conductor of this contemporary opera – based on Shakespeare's masterpiece – composed by Brett Dean. The opera premiered at the Glyndebourne Festival; many of the original cast members return to reprise their roles at the Met, including tenor Allan Clayton as Hamlet, mezzo-soprano Sarah Connolly as Gertrude, and baritone Rod Gilfry as Claudius. Soprano Brenda Rae is Ophelia.

3:00 ANTIQUES ROADSHOW RECUT: NEWPORT, PART 3 – R

3:30 WE THE YOUNG PEOPLE: MOMENTS OF TRUTH – R

4:00 SECRETS OF THE DEAD: DECODING HIEROGLYPHICS – R

5:00 THE CHAVIS CHRONICLES – Dr. Benjamin F. Chavis, Jr. interviews thought leaders.

5:30 A SEAT AT THE TABLE – A talk show series gives voice to African American women from their diverse experiences, perspectives and challenges.

6:00 PBS NEWS WEEKEND – Geoff Bennett anchors. **Repeats Monday, 7am**



RECONSTRUCTION: AMERICA AFTER THE CIVIL WAR A WETA CO-PRODUCTION

Sats, Nov. 5 & 12, 8 p.m. WETA PBS; Nov. 10 & 17, 8 p.m. WETA Metro
Reconstruction: America After the Civil War, a WETA co-production, features Harvard scholar Henry Louis Gates, Jr. exploring one of the most consequential, transformational eras in American history.



WETA

SIGNATURE DISH A WETA PRODUCTION

Monday evenings on WETA PBS (see listings); 8 p.m. on WETA Metro
Signature Dish, WETA's local restaurant exploration series hosted by Seth Tillman, presents a new episode, *Middle East Feast*, on Nov. 7. Above: Seth dining at Fava Pot with chef-owner Dina Daniel.

- 6:30 THE DAVID RUBENSTEIN SHOW: PEER TO PEER CONVERSATIONS, SEASON 4** – Episode 9 of 15. Diane von Furstenberg, *Fashion Designer*. **R**
- 7:00 TELL ME MORE WITH KELLY CORRIGAN, SERIES 4** – In a new season of this WETA co-production, *New York Times* bestselling author Kelly Corrigan conducts more interviews with influential people, exploring the lives and work of her guests. Episode 5 of 10. Neal Katyal, *Lawyer*; plus a Season 3 encore.
- 8:00 MISS SCARLET AND THE DUKE, SERIES 2 ON MASTERPIECE** – Kate Phillips and Stuart Martin star. Part 4 of 6. *Angel of Inferno*. Eliza is hired to solve a case of blackmail in the shady world of Victorian medicine and finds herself with a new rival – Patrick Nash, the owner of a private detective agency.
- 9:00 MAGPIE MURDERS ON MASTERPIECE** – Lesley Manville and Tim McMullan star. Part 4 of 6. The puzzle pieces of Alan's death get more and more jumbled. At the same time, the plot of his new book and the lives of his acquaintances start to converge.
- 10:00 ANNKA ON MASTERPIECE** – Nicola Walker stars. Part 4 of 6. An author who has ruined lives has her own ruined – permanently. Blair finds a friend for Morgan. Annika and Jake go to a museum exhibit.
- 11:00 RECONSTRUCTION: AMERICA AFTER THE CIVIL WAR** – Part 1 of 2. **R**

7 Monday

- 7:00 PBS NEWSHOUR** – Weeknights. Visit pbs.org/newshour. Repeats next day, 7am
- 8:00 ANTIQUES ROADSHOW: VINTAGE SAN ANTONIO, HOUR 2**
- 9:00 SIGNATURE DISH** – WETA's local restaurant exploration series spotlights standout dishes around Greater Washington. Seth Tillman hosts. Episode 12: *Middle East Feast*. Seth visits three restaurants that celebrate the diverse flavors of the Middle East. He tastes a lamb shank stew at *Amoo's* in McLean, VA; the Egyptian dish *molokheya*, made with cornish hen, at *Fava Pot* in Falls Church, VA; and a delicious *shawarma pita* at *Muncheez*, a Lebanese street food destination in D.C.'s Dupont Circle.
- 9:30 WETAARTS** – In this edition of WETA's local arts series, learn about Bharatanatyam, an ancient South Indian dance form with Natyabhooni School of Dance founder Deepti Mukund Navile; meet artist Chris Combs, whose art is derived from and inspired by technology; and hear from Thomas Luebke, Secretary of the U.S. Commission of Fine Arts, about the Commission's role in advancing architecture befitting the nation's capital. Felicia Curry hosts. Repeats Mon 11/21, 9:30pm
- 10:00 INDEPENDENT LENS: MOVE ME** – A film asks "Who am I now?": After an accident leaves dancer Kelsey Peterson paralyzed, she finds new allies within the Spinal Cord Injury community while testing the limits of her recovery, body and spirit. (90 min.)

8 Tuesday

- 8:00 VOTE 2022: ELECTION NIGHT SPECIAL** – Anchor and Managing Editor Judy Woodruff leads *PBS NewsHour's* live coverage of the 2022 Midterm Election results as they come in. See page 1 for details.

9 Wednesday

- 8:00 NATURE: AMERICAN OCELOT** – Visit South Texas to meet one of the United States' most endangered wild cats. With about 80 known ocelots remaining in the country, the future of the population depends on ranchers and scientists working together.
- 9:00 NOVA: CRYPTO DECODED** – From Bitcoin to NFTs, crypto is making headlines. But what exactly is it, and how does it work? Go beyond the hype and skepticism to unravel the truth behind a technology some say will revolutionize more than just money.
- 10:00 SECRETS OF THE DEAD** – [Program not announced as of press time.] Repeats Sun 11/13, 4pm

10 Thursday

- 8:00 SISTER BONIFACE MYSTERIES** – Episode 7 of 10. *Dem Bones*. Sister Boniface (Lorna Watson) investigates a cold case when recently buried human bones are found at the Great Slaughter Giant Marrow Contest. All fingers point to a local man who may be being framed, and the sleuth races against time to identify the true culprit.
- 9:00 BROADCHURCH, SERIES 3** – Part 2 of 8. Shockwaves reverberate through Broadchurch as news of the attack spreads. The scale of the investigation dawns on Ellie and Hardy. Part 3 of 8. Trish receives a shocking message and for Ellie and Hardy, suspects start to come into view. Meanwhile, Mark has some unwelcome news for Beth. (2 hrs.)

11 Friday

- 8:00 WASHINGTON WEEK** – Repeats Sat 11/12, 6am, 6:30pm; Mon 11/14, 7:30am
- 8:30 THE DAVID RUBENSTEIN SHOW: PEER TO PEER CONVERSATIONS, SEASON 4** – Episode 10 of 15. Darren Walker, *Ford Foundation President*. Repeats Sun 11/13, 6:30pm
- 9:00 USO – FOR THE TROOPS** – See how the USO (United Service Organizations) has lifted the spirits of American service personnel for more than 75 years. This film explores how the organization keeps military men and women connected to country, home, family and hope, abroad and on the home front. Repeats Sun 11/13, 2pm
- 10:00 SONGWRITING WITH SOLDIERS** – Join a unique collaboration: professional artists working with veterans to tell through song their stories of war and the return home. The concert special celebrates music's power to heal and bring diverse people together. Repeats Sun 11/13, 3pm

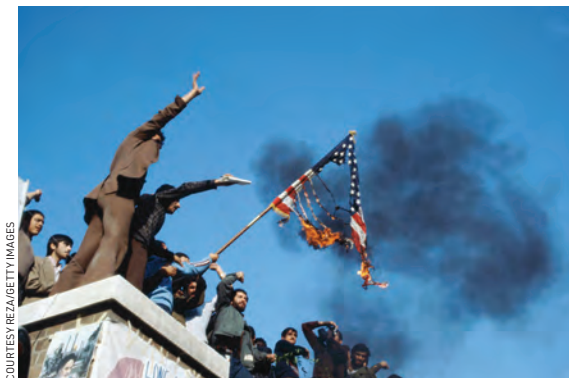
12 Saturday

6AM–6PM See the Saturday, November 5 listings.



COURTESY/PARTISAN PICTURES

Friday, Nov. 11 at 9 p.m. on WETA PBS & WETA Metro
Veterans Day program *USO – For the Troops* spotlights the work of the United Service Organizations on behalf of members of the U.S. Armed Forces and their families. Above: Stars and crew of the Spring 2016 USO tour pose upon returning to America from a 7-country journey.



COURTESY REZAGRETT/IMAGES

Mon.-Tues., Nov. 14-15 at 9 p.m. on WETA PBS & WETA Metro
Taken Hostage, a two-part *American Experience* special, revisits the Iran Hostage Crisis, when 52 Americans were held at the occupied U.S. Embassy in Tehran: Above: Iranians burn a flag on the roof, 1980.

- 6:00 PBS NEWS WEEKEND** – Geoff Bennett anchors.
6:30 WASHINGTON WEEK – R
7:00 IT'S ACADEMIC – Weekly, Saturdays at 10 a.m./7 p.m. on WETA PBS and WETA Metro; stream on the PBS Video App. The TV quiz show showcases the academic achievements of local D.C.-area high school students. Journalist Hillary Howard hosts. Competing this week are students from Alexandria City High School, Landon, and Eleanor Roosevelt High School. **Repeats Mondays, 3pm on WETA PBS; 7pm on WETA Metro**
7:30 HISTORY WITH DAVID RUBENSTEIN – Episode 7 of 10. Jill Lepore, Harvard University professor of American History. **Repeats Mon 11/14, 3:30pm**
8:00 RECONSTRUCTION: AMERICA AFTER THE CIVIL WAR – In Part 2 of this WETA co-production, with Prof. Henry Louis Gates, Jr., explore the rise of Jim Crow and the undermining of Reconstruction's legal and political legacy, and see how African Americans fought back using artistic expression to put forward a "New Negro" for a new century. **Repeats tonight, 12m; Sun 11/13, 11pm**
10:00 D-DAY AT POINTE-DU-HOC – Learn the D-Day story of the U.S. Army's 2nd Ranger battalion. Led by Lt. Col. James Rudder, the soldiers scaled the 110-foot cliffs of Pointe-du-Hoc in Normandy on June 6, 1944. Featuring interviews with surviving veterans from the assault, the film shares a World War II story of adversity and courage.
11:00 FINDING YOUR ROOTS WITH HENRY LOUIS GATES, JR. – *Children of Exile*. **R**
12M RECONSTRUCTION: AMERICA AFTER THE CIVIL WAR – Part 2 of 2. **R**

13 Sunday

6AM-12N See the Sunday, November 6 listings.

- 12N NATIVE AMERICA** – Discover the cities, science, art and beliefs that connected Native Americans 15,000 years ago. *Part 1 of 4. From Caves to Cosmos*. Ancient wisdom and modern science explore the question: who were America's First Peoples? *Part 2 of 4. Nature to Nations*. Explore the rise of great American nations. Investigate lost cities in Mexico, a temple in Peru, a potlatch ceremony in the Pacific Northwest and a tapestry of shell beads in upstate New York whose story inspired our own democracy.
2:00 USO – FOR THE TROOPS – R
3:00 SONGWRITING WITH SOLDIERS – R
4:00 SECRETS OF THE DEAD – R
5:00 THE CHAVIS CHRONICLES
5:30 A SEAT AT THE TABLE
6:00 PBS NEWS WEEKEND – Geoff Bennett anchors. **Repeats Monday, 7am**
6:30 THE DAVID RUBENSTEIN SHOW: PEER TO PEER CONVERSATIONS, SEASON 4 – Episode 10 of 15. Darren Walker, Ford Foundation President. **R**
7:00 TELL ME MORE WITH KELLY CORRIGAN, SERIES 4 – In this WETA co-production, *New York Times* bestselling author Kelly Corrigan conducts interviews with influential people. *Episode 6 of 10. Dave Eggers, Author*; plus a Season 3 encore.
8:00 MISS SCARLET AND THE DUKE, SERIES 2 ON MASTERPIECE – *Part 5 of 6. Quarter to Midnight*. A famous mystery writer is at the center of Eliza's latest investigation when a series of murders mimic scenes in his books.

Meanwhile, the Duke juggles problems at work with a new superintendent and a troubled young detective.

- 9:00 MAGPIE MURDERS ON MASTERPIECE** – *Part 5 of 6*. Susan's sister and Andreas have unexpected connections to Alan. Meanwhile, Pünd wraps up his investigation, promising, "Very soon all will be made clear!"
10:00 ANNIKA ON MASTERPIECE – *Part 5 of 6*. Arriving at a murder scene on a party boat, Annika thinks of the Greek god of unrestrained celebration. From there, things only get more chaotic.
11:00 RECONSTRUCTION: AMERICA AFTER THE CIVIL WAR – Part 2 of 2. **R**

14 Monday

- 7:00 PBS NEWS HOUR** – Weeknights. Visit pbs.org/newshour. **Repeats next day, 7am**
8:00 ANTIQUES ROADSHOW: JUNK IN THE TRUNK 11
9:00 TAKEN HOSTAGE: AMERICAN EXPERIENCE – Revisit the 1979-1981 Iran hostage crisis, when 52 Americans were held hostage at the U.S. Embassy in Tehran. Unfolding like a political thriller, the story is told through the eyewitness accounts of those who experienced the events. *Part 1 of 2*. Explore how America's quarter-century of unwavering support for its ally, the Shah of Iran, and the violent Islamic revolution that overthrew him in 1979, set the stage for the Iran hostage crisis. (2 hrs.)

15 Tuesday

- 8:00 FINDING YOUR ROOTS WITH HENRY LOUIS GATES, JR.** – In this WETA co-production, join Harvard scholar Henry Louis Gates, Jr., as he delves into the genealogy of famous Americans. Encore: *Songs of the Past*. Gates accompanies Broadway stars Leslie Odom, Jr. and Nathan Lane as they meet a cast of inspiring ancestors hidden in the branches of their family trees. **Repeats Sat 11/19, 11pm**
9:00 TAKEN HOSTAGE: AMERICAN EXPERIENCE – *Part 2 of 2*. Through riveting accounts from hostages, journalists and officials, learn how Iranian students held 52 hostages at the American embassy in Tehran from November 1979 to January 1981 – a defining crisis of Jimmy Carter's presidency. (2 hrs.)

16 Wednesday

- 8:00 NATURE: SANTA'S WILD HOME** – Get an intimate look into life in Lapland, fabled land of Santa Claus and actual home of tenacious wildlife such as reindeer, wolverines, brown bears and more.
9:00 NOVA: ZERO TO INFINITY – The concepts of zero and infinity didn't always exist. They've been invented and re-invented by different cultures over thousands of years. Discover the surprising story of these key concepts that revolutionized mathematics.
10:00 SECRETS OF THE DEAD: THE FIRST CIRCLE OF STONEHENGE – A decade-long archaeological quest reveals that the oldest stones of Stonehenge originally belonged to a much earlier sacred site – a stone circle built in West Wales.



MATT HAMILTON, ©TERRAMATER PACTUAL STUDIOS

Wednesday, Nov. 16 at 8 p.m. on WETA PBS & WETA Metro
WETA presents an encore airing of *Nature: Santa's Wild Home*, which visits northern Finland's Lapland region to spotlight wildlife that includes reindeer, wolverines, eagles, wolves, brown bears and more.



COURTESY YASSINE EL MANSO

Friday, Nov. 18 at 9 p.m. on WETA PBS & WETA Metro
Next at the Kennedy Center presents *A Joni Mitchell Songbook*, a concert special featuring an all-star lineup celebrating the artist and her music. Above: R&B/jazz vocalist Lalah Hathaway.

17 Thursday

- 8:00 SISTER BONIFACE MYSTERIES** – *Episode 8 of 10. Queen of the Kitchen.* Sister Boniface (Lorna Watson) probes a case of poisoning when a contestant drops dead during a TV baking competition. With contestants and judges determined to finish the competition, can she solve the case before the killer strikes again?
- 9:00 BROADCAST CHURCH, SERIES 3** – *Part 4 of 8.* Cath wants to do something to bring people together, and a shocking revelation turns the case on its head. *Part 5 of 8.* New information forces Hardy and Ellie to re-evaluate the case. Ed pays Jim a visit. (2 hrs.)

18 Friday

- 8:00 WASHINGTON WEEK** – *Repeats Sat 11/19, 6am, 6:30pm; Mon 11/21, 7:30am*
- 8:30 THE DAVID RUBENSTEIN SHOW: PEER TO PEER CONVERSATIONS, SEASON 4** – *Ep 11 of 15. John Mackey, Whole Foods Co-Founder/CEO. Rpts Sun 11/20, 6:30pm*
- 9:00 NEXT AT THE KENNEDY CENTER: A JONI MITCHELL SONGBOOK** – A series weaves together performances filmed live at the John F. Kennedy Center for the Performing Arts with backstage moments and commentary. Celebrate the artistry of Joni Mitchell with an all-star lineup led by Grammy Award-winner Vince Mendoza and accompanied by the NSO.
- 10:00 BRIAN WILSON: LONG PROMISED ROAD: AMERICAN MASTERS** – Explore the life and career of the Beach Boys singer, songwriter and co-founder. The film traces the legendary performer's journey of reflection on a drive around Los Angeles. (90 min.)

19 Saturday

6AM-6PM See the Saturday, November 5 listings.

- 6:00 PBS NEWS WEEKEND** – Geoff Bennett anchors.
- 6:30 WASHINGTON WEEK** – R
- 7:00 IT'S ACADEMIC** – (Also airs 10 a.m.) The TV quiz show showcases the academic achievements of local D.C.-area high school students. Journalist Hillary Howard hosts. Competing this week are students from Dominion High School, Sherwood High School, and West Springfield High School. *Repeats Mondays, 3pm on WETA PBS; 7pm on WETA Metro*
- 7:30 HISTORY WITH DAVID RUBENSTEIN** – *Episode 8 of 10. Robert A. Caro, Pulitzer Prize-winning author and National Humanities Medal winner. Repeats Mon 11/21, 3:30pm*
- 8:00 THE PILGRIMS: AMERICAN EXPERIENCE** – In this 2015 WETA co-production directed by Ric Burns, discover the harrowing, brutal truths behind the Pilgrims' arrival in the New World and the myths of Thanksgiving. The film explores the history of our nation's beginnings in an epic tale of converging forces. Oliver Platt narrates. *Repeats tonight, 12m; Sun 11/20, 2pm, 11pm*
- 10:00 THE WORLD'S GREATEST SHIPS – THE MAYFLOWER** – Rob Bell (*Great British Royal Ships*) looks at the story behind the vessel that brought the Pilgrims to America. *Repeats Sun 11/20, 4pm*

- 11:00 FINDING YOUR ROOTS WITH HENRY LOUIS GATES, JR.** – *Songs of the Past. R*
- 12M THE PILGRIMS: AMERICAN EXPERIENCE** – R

20 Sunday

6AM-12N See the Sunday, November 6 listings.

- 12N NATIVE AMERICA** – *Part 3 of 4. Cities of the Sky.* Discover the cosmological secrets behind America's ancient cities. Scientists explore some of the world's largest pyramids and 3D-scan a lost city of mounds on the Mississippi River. *Part 4 of 4. New World Rising.* Discover how resistance, survival and revival are revealed through an empire of horse-mounted Comanche warriors, secret messages encoded in Aztec manuscripts, and a grass bridge in the Andes that spans mountains and centuries of time.
- 2:00 THE PILGRIMS: AMERICAN EXPERIENCE** – R
- 4:00 THE WORLD'S GREATEST SHIPS – THE MAYFLOWER** – R
- 5:00 THE CHAVIS CHRONICLES**
- 5:30 A SEAT AT THE TABLE**
- 6:00 PBS NEWS WEEKEND** – Geoff Bennett anchors. *Repeats Monday, 7am*
- 6:30 THE DAVID RUBENSTEIN SHOW: PEER TO PEER CONVERSATIONS, SEASON 4** – *Episode 11 of 15. John Mackey, Whole Foods Co-Founder & CEO. R*
- 7:00 TELL ME MORE WITH KELLY CORRIGAN, SERIES 4** – In this WETA co-production, *New York Times* bestselling author Kelly Corrigan conducts interviews with influential people. *Episode 7 of 10. Nick Hornby, Author; plus a Season 3 encore.*
- 8:00 MISS SCARLET AND THE DUKE, SERIES 2 ON MASTERPIECE** – *Part 6 of 6. The Proposal.* While Eliza and the Duke struggle with their relationship, private investigator Nash is shot just as Eliza agrees to work with him. As Eliza and Moses try to solve the attempted murder, they realize the real target of the shooting was Eliza herself.
- 9:00 MAGPIE MURDERS ON MASTERPIECE** – *Part 6 of 6.* Susan cracks her case – not without mishap – and then accompanies Pünd as he lays out the solution to Alan's final book, as magpies watch from above.
- 10:00 ANNIKA ON MASTERPIECE** – *Part 6 of 6.* Michael's brother is prime suspect in his ex's murder. Annika goes for what looks like a one-way ride. A secret about Michael comes out.
- 11:00 THE PILGRIMS: AMERICAN EXPERIENCE** – R

21 Monday

- 7:00 PBS NEWS HOUR** – Weeknights. Visit pbs.org/newshour. *Repeats next day, 7am*
- 8:00 ANTIQUES ROADSHOW: EXTRAORDINARY FINDS** – In celebration of 500 episodes, this special hour follows the stories behind pivotal series moments through interviews with longtime appraisers and memorable guests.
- 9:00 SIGNATURE DISH** – WETA's local restaurant exploration series spotlights standout dishes around Greater Washington. Seth Tillman hosts. *Encore: Episode 6: Seafood Standouts.*



ANTIQUES ROADSHOW FOR WGBH/WGBH, 2019

Mon, Nov. 21, 8 p.m. on WETA PBS; 9 p.m. on WETA Metro
Antiques Roadshow: Extraordinary Finds, celebrating the milestone of 500 episodes, presents pivotal moments of the series through amazing finds and interviews with longtime appraisers and memorable guests. Above: Folk art expert Allan Katz discusses a piece in his home.



Mon., Nov. 21, 10 p.m. WETA PBS; Nov. 26, 8 p.m. WETA Metro
POV: Midwives spotlights women in western Myanmar – from the Buddhist majority and Muslim minority – running a makeshift medical clinic providing care in a region beset by violent ethnic divisions. Winner, 2022 Sundance World Cinema Documentary, Verité Filmmaking.

- 9:30 WETA ARTS** – See the Monday, November 7, 9:30 p.m. listing. **R**
- 10:00 POV: MIDWIVES** – In this documentary, follow two women who run a makeshift medical clinic in western Myanmar, a region torn apart by violent ethnic divisions. The owner is Buddhist and risks her safety daily to treat Muslim patients. The apprentice is part of the Muslim minority group denied their basic rights – but is determined to provide health care for her people. (90 min.)

22 Tuesday

- 8:00 FINDING YOUR ROOTS WITH HENRY LOUIS GATES, JR.** – In this WETA co-production, join Harvard scholar Henry Louis Gates, Jr., as he delves into the genealogy of famous Americans. Encore: *Watchmen*. Gates guides Regina King and Damon Lindelof as they discover that they have more in common than meets the eye.
- 9:00 BUFFY SAINTE-MARIE: CARRY IT ON: AMERICAN MASTERS** – Experience the story of the Oscar-winning Indigenous artist, from her rise to prominence in New York's Greenwich Village folk music scene through her groundbreaking career as a singer-songwriter, social activist, educator and artist. (2 hrs.)

23 Wednesday

- 8:00 TUTANKHAMUN: ALLIES & ENEMIES** – Commemorate the 100th anniversary of the opening of King Tut's tomb with Egyptian archaeologist Dr. Yasmin El-Shazly and photographer Mahmoud Rashad. *Part 1 of 2*. Hour 1 explores the mysteries of Tutankhamun's life and burial. Historians and scientists inspect historical inconsistencies.
- 9:00 TUTANKHAMUN: ALLIES & ENEMIES** – *Part 2 of 2*. Hour 2 uncovers further mysteries and historical questions surrounding King Tut.
- 10:00 SECRETS OF THE DEAD: EGYPT'S DARKEST HOUR** – Follow a team of archaeologists as they examine a rare mass grave dating to the collapse of ancient Egypt's Old Kingdom, when political infighting and a changing climate brought down a dynasty in a moment of crisis and catastrophe.

24 Thursday

- 8:00 SISTER BONIFACE MYSTERIES** – *Episode 9 of 10. Sister Town*. Sister Boniface (Lorna Watson) uncovers a murder at Great Slaughter's town twinning ceremony with German town Groß Gemetzel, while Sam faces a backlash from locals.

9:00 BROADCASTCHURCH, SERIES 3 – *Part 6 of 8*. A surprise development threatens to derail the case. Ed comes under scrutiny, and Mark makes a decision. *Part 7 of 8*. Ellie makes a breakthrough, and the Latimers count the cost. Leah hatches a plan to help her mum. (2 hrs.)

25 Friday

- 8:00 WASHINGTON WEEK** – Repeats 11/26, 6am, 6:30pm; Mon 11/28, 7:30am
- 8:30 HAPPY BIRTHDAY MR. BEAN** – Explore the magic behind Rowan Atkinson's comic character, and learn how the *Mr. Bean* TV show became a global sensation. The series spawned two major feature films, three animated series and an online phenomenon. With classic clips and interviews from key creators, discover the story behind the iconic character. Repeats Sat 11/26, 10:30am; Sun 11/27, 6am; Mon 11/28, 10pm
- 10:00 FRANK LLOYD WRIGHT: THE MAN WHO BUILT AMERICA** – Considered by many to be America's greatest architect, Frank Lloyd Wright built more than 500 buildings over the course of a seven-decade career, changing the face of modern architecture. Follow along as architect Jonathan Adams travels across the United States to explore Wright's masterpieces and the Welsh roots that shaped both his life and signature design.

26 Saturday

- 6AM WASHINGTON WEEK** – **R**
- 6:30 FIRING LINE WITH MARGARET HOOVER** – **R**
- 7AM PBS NEWSHOUR** – **R**
- 8AM EAT YOUR MEDICINE: THE PEGAN DIET WITH MARK HYMAN, MD** – See the Monday, November 28, 11:30 p.m. listing.
- 10AM IT'S ACADEMIC** – See tonight's 7 p.m. listing.
- 10:30 HAPPY BIRTHDAY MR. BEAN** – **R**
- 12M SUZE ORMAN'S ULTIMATE RETIREMENT GUIDE** – Join the acclaimed personal finance expert for essential advice on planning for and thriving in retirement. With empathy, straight talk and humor, Orman provides information about key actions. Topics include when to retire, how to save and invest for retirement, Social Security strategy, long-term care insurance and more. Repeats Sun 11/27, 7:30am, midnight



BANJANY/TIGER ASPECT PRODUCTIONS

Friday, Nov. 25 at 8:30 p.m. on WETA PBS
 Special program *Happy Birthday Mr. Bean* celebrates Rowan Atkinson's beloved character and how just 14 episodes of his live action TV show went on to become a global sensation and an enduring success. Tune in Tuesday, Nov. 29 for 10 *Mr. Bean* episodes.

WETA Magazine is published monthly by the Greater Washington Educational Telecommunications Association for its members. Three dollars of each member's dues are designated for its subscription. WETA occasionally exchanges member names with other organizations. If you wish that your name not be exchanged, please call Audience Services at 703-998-2724. ©2022 by Greater Washington Educational Telecommunications Association. All rights reserved. No part of this magazine may be reproduced in any form without written permission. Periodical postage paid at Arlington, VA 22210 and additional offices. Send address changes to WETA, 3939 Campbell Avenue, Arlington, Virginia 22206. Volume 35, Number 11. ISSN No. 1041-2700.

PRINTED ON RECYCLED PAPER



Publisher Mary Stewart
 Editor Jeff Giese
 Design MANIFEST LLC

Editorial and Advertising Offices
 3939 Campbell Ave.
 Arlington, VA 22206

Statement of Ownership, Management and Circulation (Required by 39 U.S.C. 3685)

1. Publication Title: **WETA** (magazine). 2. Publication Number 008-057. 3. Filing Date: 09/30/2022. 4. Issue Frequency: monthly. 5. Number of Issues Published Annually, 12. 6. Annual subscription \$3. 7. Mailing Address of Known Office of Publication: 3939 Campbell Avenue, Arlington, Virginia, 22206-3440. 8. Mailing Address of Location of Headquarters of Publisher: 3939 Campbell Avenue, Arlington, Virginia, 22206-3440. 9. Publisher Address: Mary Stewart, 3939 Campbell Avenue, Arlington, Virginia, 22206-3440; Editor Address: Jeff Giese; 3939 Campbell Avenue, Arlington, Virginia, 22206-3440. 10. Owner: Greater Washington Educational Telecommunications Association; 3939 Campbell Avenue, Arlington, Virginia, 22206-3440; 11. Known Bond-Holders, Mortgagees and Other Security Holders Owning or Holding 1 percent or more of Total Amount of Bonds, Mortgages or Other Securities: **None**. 12. Tax Status: The purpose, function and nonprofit status of this organization and the exempt status for Federal Income tax purposes **has not changed** during the preceding 12 months. Extent and Nature of Circulation: **Membership publication**. 13. Publication Title: **WETA** (magazine). 14. Issue Date for Circulation Data Below: 10/01/2022. 15. Extent of Circulation. **15A.** Total No. Copies Printed (Net Press Run): Average No. Copies Each Issue During Preceding 12 Months, 144,976. Single Issue Nearest Filing Date, 144,715. **15B.** Paid Circulation: 1. Mailed Outside-County Paid Subscriptions Stated on PS Form 3541: Average No. Copies Each Issue During Preceding 12 Months, 121,403. Single Issue Nearest to Filing Date, 117,458. 2. Mailed In-County Paid Subscriptions Stated on PS Form 3541: Average No. Copies Each Issue During Preceding 12 months, 21,509. Single Issue Nearest to Filing Date, 25,513. 3. Paid Distribution Outside the Mails Including Sales Through Dealers and Carriers, Street Vendors and Counter Sales and Other Paid Distribution Outside USPS: Average No. Copies Each Issue During Preceding 12 months, 0. Single Issue Nearest to Filing Date, 0. 4. Paid Distribution by Other Classes of Mail Through the USPS: Average No. Copies Each Issue During Preceding 12 months, 0. Single Issue Nearest to Filing Date, 0. **15C.** Total Paid Distribution: Average No. Copies Each Issue During Preceding 12 Months, 142,912. Single Issue Nearest to Filing Date, 142,971. **15D.** Free or Nominal Rate Distribution: 1. Free or Nominal Rate Outside-County Copies Included on PS Form 3541: Average No. Copies Each Issue During Preceding 12 Months, 706. Single Issue Nearest to Filing Date, 858. 2. Free or Nominal Rate In-County Copies Included on PS Form 3541: Average No. Copies Each Issue During Preceding 12 months, 42. Single Issue Nearest to Filing Date, 57. 3. Free or Nominal Rate Copies Mailed at Other Classes Through the USPS: Average No. Copies Each Issue During Preceding 12 months, 65. Single Issue Nearest to Filing Date, 65. 4. Free or Nominal Rate Distribution Outside the Mail: Average No. Copies Each Issue During Preceding 12 months, 482. Single Issue Nearest to Filing Date, 275. **15E.** Total Free or Nominal Rate Distribution (Sum of D1-D4): Average No. Copies Each Issue During Preceding 12 Months, 1,295. Single Issue Nearest to Filing Date, 1,255. **15F.** Total Distribution (Sum of C and E): Average No. Copies Each Issue During Preceding 12 Months, 144,207. Single Issue Nearest to Filing Date, 144,226. **15G.** Copies Not Distributed (Office Use, Left Over, Unaccounted, Spoiled After Printing): Average No. Copies Each Issue During Preceding 12 Months, 769. Single Issue Nearest to Filing Date, 489. **15H.** Total (Sum of F and G): Average No. Copies Each Issue During Preceding 12 Months, 144,976. Single Issue Nearest to Filing Date, 144,715. **15I.** Percent Paid and/or Requested Print Circulation: Average During Preceding 12 Months: 99.1%. Single Issue Nearest to Filing Date: 99.1%. **16.** Electronic Copy Circulation. **16A.** Paid Electronic Copies: Average No. Copies Each Issue During Preceding 12 Months, 1,242. Single Issue Nearest to Filing Date, 1,234. **16B.** Total Paid Print Copies + Paid Electronic Copies: Average No. Copies Each Issue During Preceding 12 Months, 144,154. Single Issue Nearest to Filing Date, 144,205. **16C.** Total Print Distribution + Paid Electronic Copies: Average No. Copies Each Issue During Preceding 12 Months, 145,449. Single Issue Nearest to Filing Date, 145,460. **16D.** Percent Paid (Both Print & Electronic Copies): Average During Preceding 12 Months: 99.1%. Single Issue Nearest to Filing Date: 99.1%. Be it certified that at least 50% of all distributed copies (electronic and print) are paid above a nominal price. I certify that the statements made by me above are correct and complete. Jeff Giese, Editor. 09/30/2022.



COURTESY ELEMENT ENTERTAINMENT AND MASTERPIECE

Sunday, Nov. 27, 1 p.m.-9 p.m. on WETA PBS

WETA features a *Miss Scarlet & The Duke, Series 2* on Masterpiece marathon, celebrating the Victorian-era detective drama starring Stuart Martin and Kate Phillips as the sleuthing duo. At 9 p.m., stay tuned for the program *Miss Scarlet & The Duke: Secrets Revealed*.

- 2:00 RICK STEVES' EUROPEAN CHRISTMAS** – See the Wednesday, November 30, 10 p.m. listing. **Repeats Sun 11/27, 9:30am**
- 4:00 GREAT PERFORMANCES: JOSH GROBAN'S GREAT BIG RADIO CITY SHOW** – See the Nov. 30, 8 p.m. listing.
- 6:00 PBS NEWS WEEKEND** – Geoff Bennett anchors.
- 6:30 WASHINGTON WEEK – R**
- 7:00 IT'S ACADEMIC** – (Also airs 10 a.m.) The TV quiz show showcases the academic achievements of local D.C.-area high school students. Journalist Hillary Howard hosts. Competing this week are students from Justice High School, Bishop O'Connell High School, and St. Anselm's Abbey School. **Repeats Mondays, 3pm on WETA PBS; 7pm on WETA Metro**
- 7:30 HISTORY WITH DAVID RUBENSTEIN** – *Episode 9 of 10. Walter Isaacson, professor and former CEO of The Aspen Institute.*
- 8:00 BECOMING FREDERICK DOUGLASS** – Discover how a man born into slavery became one of the most influential voices for democracy in American history. Oscar-nominated filmmaker Stanley Nelson explores the role Douglass played in securing the right to freedom for African Americans. **Repeats Sun 11/27, 11:30am**
- 9:30 MY MUSIC: JOHN SEBASTIAN PRESENTS: FOLK REWIND** – A music special spotlights the singers and songwriters of the classic 1950s and 1960s folk era. Presented by John Sebastian of The Lovin' Spoonful, the program features a trove of historical footage and concert performances by artists such as Pete Seeger, Judy Collins, Harry Belafonte, Trini Lopez, Rod McKuen, Bobby Darin, The Kingston Trio and others.
- 11:00 MARIAH CAREY – LIVE AT THE TOKYO DOME** – The pop superstar's first show in Japan, March 7, 1996, the first show of her first international tour, features her top hits.

27 Sunday

- 6AM HAPPY BIRTHDAY MR. BEAN – R**
- 7:30 SUZE ORMAN'S ULTIMATE RETIREMENT GUIDE – R**
- 9:30 RICK STEVES' EUROPEAN CHRISTMAS** – See the Wednesday, November 30, 10 p.m. listing. **R**
- 11:30 BECOMING FREDERICK DOUGLASS – R**
- 1:00 MASTERPIECE: MISS SCARLET AND THE DUKE, SERIES 2 MARATHON** – WETA features Season 2 of the drama in its entirety; Parts 1-4 air 1-6 p.m. Kate Phillips and Stuart Martin star as private eye Eliza Scarlet and her friend, Inspector William "The Duke" Wellington of Scotland Yard. The detectives tackle cases set in Victorian-era London. The series continues at 6:30 p.m.
- 6:00 PBS NEWS WEEKEND** – Geoff Bennett anchors. **Repeats Monday, 7am**
- 6:30 MASTERPIECE: MISS SCARLET AND THE DUKE, SERIES 2 MARATHON** – The marathon continues with Parts 5-6 of 6. (Parts 1-4 air 1-6 p.m. today.)
- 9:00 MISS SCARLET AND THE DUKE: SECRETS REVEALED** – Go behind the scenes of Season 2 of the popular Masterpiece drama with interviews of the cast, creator and executive producer Rachael New, production designer Paki Smith, and costume designer Leonie Prendergast, who provide insights into the making of the series.
- 10:30 THE DOOBIE BROTHERS WITH MICHAEL McDONALD: 50TH ANNIVERSARY AT RADIO CITY MUSIC HALL** – Famous for their feel-good hits, the Doobie Brothers helped turn the "SoCal" sounds of the 1960s into '70s

radio gold. Then they reinvented themselves as soft-rock hit-makers, with Michael McDonald breathing new life into classic songs. This concert was taped in September 2022 when the band reunited for a 50th Anniversary performance at Radio City Music Hall.

12M SUZE ORMAN'S ULTIMATE RETIREMENT GUIDE – R

28 Monday

7:00 PBS NEWSHOUR – Weeknights. Visit pbs.org/newshour. **Repeats next day, 7am**

8:00 MY MUSIC: BURT BACHARACH'S BEST – Enjoy the music of songwriter Burt Bacharach via archival performances by the original artists who made the composer's music famous, including Dionne Warwick ("Walk On By," "I Say a Little Prayer"), B.J. Thomas ("Raindrops Keep Fallin' on My Head"), The Carpenters ("Close to You"), The Fifth Dimension ("One Less Bell to Answer"), Dusty Springfield ("The Look of Love"), and others.

9:30 SIGNATURE DISH – WETA's local restaurant exploration series spotlights standout dishes around Greater Washington. Seth Tillman hosts. **Encore: Episode 7: Southern Comforts.**

10:00 HAPPY BIRTHDAY MR. BEAN – R

11:30 EAT YOUR MEDICINE: THE PEGAN DIET WITH MARK HYMAN, MD – Learn about the power of foods to heal what ails us, as Functional Medicine practitioner Mark Hyman shares his protocol the Pegan Diet, a riff on the Paleo and vegan diets, offering a nutrient-dense, healing way of eating.

29 Tuesday

8:00 MR. BEAN – Rowan Atkinson's madcap International Emmy Award-winning creation features the quirky character trying to extricate himself from embarrassing situations – only to end up in deeper trouble. *Episode 1. Mr. Bean; Episode 2. The Return of Mr. Bean; Episode 3. The Curse of Mr. Bean; Episode 4. Mr. Bean Goes to Town; Episode 5. The Trouble with Mr. Bean; Episode 6. Mr. Bean Rides Again; Episode 7. Merry Christmas, Mr. Bean; Episode 8. Mr. Bean in Room 426; Episode 9. Mind the Baby, Mr. Bean; Episode 10. Do-It-Yourself Mr. Bean.*

30 Wednesday

8:00 GREAT PERFORMANCES: JOSH GROBAN'S GREAT BIG RADIO CITY SHOW – Experience the world-renowned baritone performing songs from many musical genres alongside several special guest stars including Cyndi Lauper, Denée Benton, New York City Ballet principal dancer Tiler Peck and others.

10:00 RICK STEVES' EUROPEAN CHRISTMAS – Join the travel expert for colorful celebrations of Christmas across Europe, from England to Wales, France, Norway, Germany, Austria, Switzerland and Italy. Enjoy Christmas markets, hear local choirs, share holiday traditions with families, and more.

12M AGING BACKWARDS 3 WITH MIRANDA ESMONDE-WHITE – You have a choice in how you age and whether you remain mobile, healthy and pain-free throughout life. Former ballerina Miranda Esmonde-White presents a six-point plan for keeping one's mind sharp and body active using gentle daily movement.



Wednesday, Nov. 30 at 8 p.m. on WETA PBS

Great Performances: Josh Groban's Great Big Radio City Show features the world-renowned baritone performing songs from many musical genres alongside special guests. Above: Groban with Denée Benton.

Via Antenna 26.3
Comcast 266/1147
Cox 801
Fios 472
RCN 38

WETA

**PBS
KIDS**

The WETA PBS Kids channel offers a safe haven for young viewers, presenting educational programming 24 hours each day, seven days a week.

WEEKDAYS ON WETA PBS KIDS

- Peg + Cat, 6:30am
- Super WHY!, 7am
- Daniel Tiger's Neighborhood, 7:30am, 8am
- Rosie's Rules, 8:30am
- Sesame Street, 9am
- Elinor Wonders Why, 9:30am
- Donkey Hodie, 10am
- Dinosaur Train, 10:30am
- Clifford the Big Red Dog, 11am
- Curious George, 11:30am
- Sesame Street, 12pm
- Pinkalicious & Peterrific, 12:30pm

- Let's Go Luna!, 1pm
- Donkey Hodie, 1:30pm
- Cyberchase, 2pm
- Molly of Denali, 2:30pm
- Hero Elementary, 3pm
- Arthur, 3:30pm
- Odd Squad, 4pm
- Wild Kratts, 4:30pm
- Curious George, 5pm

- Xavier Riddle and the Secret Museum, 5:30pm
- Alma's Way, 6pm
- Molly of Denali, 6:30pm
- Wild Kratts, 7pm
- Odd Squad, 7:30pm
- Alma's Way, 8pm
- Pinkalicious & Peterrific, 8:30pm
- Nature Cat, 9pm
- Ready Jet Go! 9:30pm
- **WETA PBS Kids Family Night** airs Fridays, 7-10pm



Visit weta.org/schedule for complete WETA PBS Kids listings.

WEEKDAYS ON WETA PBS, 8 AM – 3 PM

- Hero Elementary, 8am
- Alma's Way, 8:30am
- Curious George, 9am
- Daniel Tiger's Neighborhood, 9:30am
- Rosie's Rules, 10am
- Donkey Hodie, 10:30am
- Sesame Street, 11am
- Pinkalicious & Peterrific, 11:30am
- Dinosaur Train, 12pm
- Elinor Wonders Why, 12:30pm
- Sesame Street, 1pm
- Rosie's Rules, 1:30pm
- Daniel Tiger's Neighborhood, 2pm
- Let's Go Luna!, 2:30pm





Via Antenna 26.2
Comcast 265, 1146
Cox 800
Fios 474
RCN 39, 602

British Television at Its Best

The WETA UK channel is devoted to the best in British television programming, presenting beloved classics and contemporary series around the clock, seven days a week. WETA UK offers a full schedule of fine entertainment programming – featuring drama, mystery and comedy – in addition to documentary series and news reports.

NOVEMBER P.M. PROGRAMMING ON WETA UK

WETA UK features
Miss Scarlet and The Duke,
Series 2 Nov. 27, 1-8pm

VISIT WETA.ORG/SCHEDULE FOR A COMPLETE PROGRAM LINEUP

WETA UK features
Miss Scarlet and The Duke,
Series 1, Nov. 26, 1-8pm

| | SUNDAY | MONDAY | TUESDAY | WEDNESDAY | THURSDAY | FRIDAY | SATURDAY |
|---------|--|---|---|--|---|---|---|
| 12pm | Landscape Artist of the Year. Series 1 & 2 | McLeod's Daughters, Series 1 & 2 | McLeod's Daughters, Series 1 & 2 | McLeod's Daughters, Series 1 & 2 | McLeod's Daughters, Series 1 & 2 | McLeod's Daughters, Series 1 & 2 | • Hamish Macbeth, Series 1 (11/5) • Walking Victorian England (starts 11/12) |
| 12:30pm | | | | | | | |
| 1pm | • Queen Elizabeth's Secret Agents • Walking Victorian England (starts 11/13) | A Place to Call Home, Series 3 & 4 & 5 | A Place to Call Home, Series 3 & 4 & 5 | A Place to Call Home, Series 3 & 4 & 5 | A Place to Call Home, Series 3 & 4 & 5 | A Place to Call Home, Series 3 & 4 & 5 | • The Mallorca Files, Series 2 (11/5) • Hamish Macbeth, Series 1 & 2 (11/12-11/19) |
| 1:30pm | | | | | | | |
| 2pm | Lucy Worsley's Royal Myths & Secrets | Walking Victorian England | Hamish Macbeth, Series 1 & 2 | • The Queen's Garden (11/2) • Foyle's War, Series 2 (starts 11/9) | Father Brown, Series 8 | McLeod's Daughters, Series 1 & 2 | Death in Paradise: Series 11 |
| 2:30pm | | | | | | | |
| 3pm | Hamish Macbeth, Series 1 & 2 | • Lucy Worsley's Royal Myths & Secrets • Britain's Railways (starts 11/21) | Doc Martin, Series 2 | Father Brown, Series 8 | Death in Paradise, Series 11 | Shakespeare & Hathaway: Private Investigators, Series 4 | McLeod's Daughters, Series 1 & 2 |
| 3:30pm | | | | | | | |
| 4pm | Call the Midwife, Series 11 | Landscape Artist of the Year, Series 1 & 2 | Miss Fisher's Murder Mysteries, Series 2 | Sanditon, Series 1 on Masterpiece | Agatha Christie's Poirot, Series 3 | Traces, Series 2 | Shakespeare & Hathaway: Private Investigators, Series 4 |
| 4:30pm | | | | | | | |
| 5pm | Foyle's War, Series 2 | BBC World News Outside Source | BBC World News Outside Source | BBC World News Outside Source | BBC World News Outside Source | BBC World News Today | Foyle's War, Series 2 |
| 5:30pm | | BBC World News America | BBC World News America | BBC World News America | BBC World News America | BBC World News America | |
| 6pm | Sanditon, Series 1 & 2 on Masterpiece (starts 11/6) (Series 2 starts 11/20, 7pm) | Open All Hours | Open All Hours | Open All Hours | Open All Hours | Open All Hours | Sanditon, Series 1 & 2 on Masterpiece (two episodes) (Series 2 starts 11/19, 7pm) |
| 6:30pm | | As Time Goes By | As Time Goes By | As Time Goes By | As Time Goes By | As Time Goes By | |
| 7pm | | Landscape Artist of the Year, Series 2 & 3 & 4 | Landscape Artist of the Year, Series 2 & 3 & 4 | Landscape Artist of the Year, Series 2 & 3 & 4 | Landscape Artist of the Year, Series 2 & 3 & 4 | Landscape Artist of the Year, Series 2 & 3 & 4 | |
| 7:30pm | | | | | | | |
| 8pm | Walking Victorian England | Hamish Macbeth, Series 1 & 2 | Foreign Favourites | Father Brown, Series 8 | McLeod's Daughters, Series 1 (Series 2 starts 11/17) | Masterworks Showcase | • 8 pm: River (Eps 1-3, then repeats) (11/5) |
| 8:30pm | | | • 8pm: Seaside Hotel, Series 5 | | | • 8pm: Foyle's War, Series 2 | • 8 pm: River (Eps 4-6, then repeats) (11/12) |
| 9pm | • Lucy Worsley's Royal Myths & Secrets • Britain's Railways (starts 11/20) | Doc Martin, Series 2 | • 8pm: Astrid (starts 11/29) • 9pm: La Otra Mirada (to 10:30pm) • 10:30pm: The Hunter, Series 1 (to 11:30pm) (starts 11pm on 11/29) | Death in Paradise, Series 11 | Shakespeare & Hathaway: Private Investigators, Series 4 (starts 11/3) | • 9pm: Sanditon, Series 1 & 2 on Masterpiece (two episodes) (Series 2 starts 11/25, 10pm) | • 8 pm: Mr. Bean, Series 1 (6 episodes, then repeats) (11/19) |
| 9:30pm | | | | | | | |
| 10pm | Landscape Artist of the Year | Miss Fisher's Murder Mysteries, Series 2 | | Agatha Christie's Poirot, Series 3 | Traces, Series 2 | | |
| 10:30pm | | | | | | | |
| 11pm | Open All Hours (2 eps) | BBC World News | | BBC World News | BBC World News | BBC World News | • 8 pm: Mr. Bean, Series 1 (7 episodes, then repeats) (11/26) |
| 11:30pm | | Hamish Macbeth, Series 1 & 2 | BBC World News (12m on 11/29) | Father Brown, Series 8 | McLeod's Daughters, Series 1 & 2 | Foyle's War, Series 2 | |
| | | | | | | | |
| | SUNDAY | MONDAY | TUESDAY | WEDNESDAY | THURSDAY | FRIDAY | SATURDAY |

WETA UK Highlights



COURTESY BANIJAY/TIGER ASPECT

Mr. Bean, Series 1

Saturdays, Nov. 19 & 26 at 8 p.m. on WETA UK

Rowan Atkinson's madcap, quirky character remains a global phenomenon more than 30 years after *Mr. Bean* premiered in 1990. In the series' 14 episodes, the indelible comic figure described as "a child in a grown man's body" tries to extricate himself from a wide variety of scenarios and embarrassing situations — from visiting a fancy restaurant and being served an unwanted dish to trying to evade a parking lot fee, from visiting the dentist to trying to cook a turkey for a holiday feast — but only ends up getting himself in deeper trouble. The Emmy-winning series was written by some of the UK's leading comic talent, including Richard Curtis and Ben Elton. **Binge-watch the series with WETA Passport.**

Shakespeare & Hathaway—Private Investigators — *new season*

Thursdays at 9 p.m. starting Nov. 3 on WETA UK

The oddball, oddly matched Stratford-upon-Avon-based sleuths Luella Shakespeare and Frank Hathaway — portrayed by Jo Joyner and Mark Benton — return in new Season 4 installments of the British drama mystery series. From suspected ghosts to the passions and rivalries of ballroom dancing and a plot to sabotage Christmas, it's business as usual for the debt-laden ex-policeman and his much more credible partner in crime. In the 10 new episodes, Lu joins a diet club, and Frank finds himself accused of murder.

Meanwhile, the rogues' gallery of characters is as colorful and eccentric as always, from a drowned ex-Miss Stratford-upon-Avon named Ophelia to an author murdered with his own Samurai sword.



SIKON RIDGWAY/BBC STUDIOS 2021



COURTESY BANIJAY/KUDOS

River

Saturdays, Nov. 5 & 12 at 8 p.m. on WETA UK

Asix-part 2015 thriller series written by Emmy- and BAFTA-winning screenwriter Abi Morgan (*The Hour*, *The Iron Lady*) features a stellar cast. Stellan Skarsgård stars as protagonist John River, a brilliant London police officer whose genius and fault line is the fragility of his mind.

River's long-held defenses are eroded by love and loss, and he is haunted by the murder victims whose secrets he must unlock. One of the voices in his head is that of his late colleague, Detective Sergeant Jackie 'Stevie' Stevenson, played by Nicola Walker. Lesley Manville portrays their boss, Chief Inspector Chrissie Reid. Eddie Marsan (*Sherlock Holmes*) appears as a taunting killer. **Binge-watch with WETA Passport.**

Walking Victorian England

Sundays at 8 p.m. starting Nov. 6 on WETA UK

In a six-part series, historian Dr. Onyeka Nubia examines Victorian Britain from the perspective of different regions throughout the nation. From impressive engineering to global supremacy, the years of Queen Victoria's reign are often seen as a high point in British history. But, the truth is more complex and interesting. From megalomaniac industrialists to workers fighting for the vote, Dr. Nubia unearths a society riddled with inequality and injustice. Roaming the U.K., in London, Liverpool, Edinburgh and beyond he spotlights a Victorian world expanding and changing like never before, filled with cutting-edge medicine, technological advancement, and no shortage of intriguing characters.



APT/PRINCE MEDIA AND ALL MEDIA INTERNATIONAL

Also in November: WETA UK presents marathon airings of *Miss Scarlet and The Duke, Series 1 & 2* on *Masterpiece*, Saturday and Sunday, Nov. 26-27, 1-8 p.m. Also tune in for *Sanditon, Series 1 & 2* on *Masterpiece* at 9 p.m. on Fridays starting Nov. 4; and French-Belgian police series *Astrid*, starting Tuesday, Nov. 29 at 8 p.m.

WETA Metro is the streaming and broadcast television channel that features popular PBS programming and engaging content curated for our local audience, including offerings spotlighting the Metro D.C. community. The channel is simulcast with WETA PBS most evenings. Each day on WETA Metro, enjoy local programs, news and public affairs offerings (such as *PBS NewsHour*, weekdays at 6 p.m./11 p.m.), and lifestyle and cultural shows.

VISIT WETA.ORG/SCHEDULE FOR A COMPLETE PROGRAM LINEUP
Stream at weta.org/livestream or via the PBS Video App



PHOTO: MERCEDES JELENIK

Independent Lens: Move Me

**Saturday, Nov. 12 at 8 p.m. on WETA Metro;
stream on the PBS Video App**

An *Independent Lens* film follows the quest for identity of filmmaker Kelsey Peterson, who on the eve of Independence Day 2012 dove into the waters of Lake Superior off the shore of Wisconsin, struck her head on the lake bottom, and suffered a life-altering spinal cord injury that would take away both function and sensation from the chest down. Altering her self-identities as an athlete and dancer, the injury impels Peterson to ask “Who am I now?”. Within the spinal cord injury (SCI) community, she finds peers and allies as she grapples with the ebb and flow of hope and acceptance.

Veterans Day Programming

WETA presents special programming marking Veterans Day. On Thursday, Nov. 10 at 10 p.m. on WETA Metro, tune in to *Jack Taylor: The Enterprise* (at right) to learn the story of the decorated World War II navy fighter pilot who established one of America’s most successful post-war companies. On Friday, Nov. 11, 9-11 p.m. on WETA Metro and WETA PBS, tune in to *USO—For the Troops* and *Songwriting with Soldiers*. And on Thursday, Nov. 17 at 10 p.m. on WETA Metro, watch *D-Day at Pointe-Du-Hoc*, which explores the story of the famed U.S. Army Rangers assault on cliff-top gun emplacements during the Normandy landings.



JACK TAYLOR, COURTESY AMERICAN PUBLIC TELEVISION



COURTESY MATT BARNES

Buffy Sainte-Marie: Carry It On: American Masters

**Tuesday, Nov. 22 at 9 p.m. on WETA Metro & WETA PBS;
stream on the PBS Video App**

In celebration of Native American Heritage Month, a new film spotlights the life and career of Cree musician, artist and activist Buffy Sainte-Marie, who has used her platform to campaign for Indigenous and women’s rights and inspired generations of musicians, artists and activists. The documentary chronicles Sainte-Marie’s achievements through six decades from her rise in the Greenwich Village folk music scene. Interviewees include Joni Mitchell, Sonia Manzano, John Kay, Robbie Robertson, Jackson Browne and others. Tune in to WETA Metro on Saturday nights, and see WETA World, for additional Native American Heritage Month programming in November.

It’s Academic — the longest-running high school TV quiz show in the world — comes to WETA, spotlighting the academic achievements of students from schools around Greater Washington. The program airs on WETA Metro, Saturdays at 10 a.m. and 7 p.m., repeating Mondays at 7 p.m. See page 3 for details.

The WETA World channel is a 24/7 news and public affairs service devoted to fact-based nonfiction programming, sharing broad perspectives, stories and ideas. WETA World informs and educates, presenting award-winning documentaries and domestic and international news broadcasts. The channel features a slate of original programs that examine issues with a diversity of voices and illuminate conflicts, movements and cultures around the globe.

VISIT WETA.ORG/SCHEDULE FOR A COMPLETE PROGRAM LINEUP
Real Stories from Around the World

America ReFramed: Daughter of a Lost Bird

Thursday, Nov. 17 at 8 p.m. on WETA World

WETA World's November presentations include a wide array of films — more than 70 programs — marking Native American Heritage Month. Among them is the award-winning documentary *Daughter of a Lost Bird*. In the program, Kendra, a Native adoptee, grew up assimilated in a loving, white family with little connection to her heritage. Now, as an adult with a family of her own, she embarks on a seven-year journey to find her biological mother, April, and return to her Lummi homeland in Northwest Washington state. Together, Kendra and April, also a Native adoptee, navigate what it means to be Native and to belong to a tribe from the outside. Previously, some Indigenous children were separated from their communities and adopted by white families under the Indian Adoption Project. The children, who suffered from loss of tribal identity, would be deemed Lost Bird — the name of an early Native adoptee in the late 1800s. Stream the film with WETA Passport.



COURTESY GBH/WORLD CHANNEL

We the Young People: Moments of Truth

Monday, Nov. 7 at 9 p.m. on WETA World

Student Reporting Labs (SRL), an education program of WETA's *PBS NewsHour*, presents a new special focused on young people and what is at stake for them in the 2022 U.S. midterm elections. The program is hosted by SRL teen reporters Tiffany Rodriguez of Philadelphia and Berto Suarez of Rockville, Maryland. The SRL team fanned out across the country to capture stories on election workers, explainers on voting, the quest to expand the voting age to 16, and important issues that matter to Gen Z such as student debt, social media,

and misinformation. Data suggests that the 8 million young people newly eligible to vote in the 2022 U.S. midterms could have an opportunity to shape the outcome of elections in key battleground states.



PBS NEWSHOUR STUDENT REPORTING LABS

America ReFramed: Kid Candidate

Thursday, Nov. 3 at 8 p.m. on WETA World • In a time when many young Americans increasingly feel cut off from politics and other traditional institutions, a viral joke video catapults Hayden Pedigo — a 24-year-old artist and experimental musician in Amarillo, Texas — into the spotlight and prompts him to make a surprise bid for city council. Exploring Pedigo's goal of upending the status quo and ousting corrupt incumbent politicians, the documentary film *Kid Candidate*, on the series *America ReFramed*, follows his unorthodox political campaign while unpacking issues of race, income inequality, and gentrification in small-town America. Stream the film with WETA Passport.



COURTESY GBH/WORLD CHANNEL

November Highlights on WETA Classical

In addition to sharing recordings of marvelous classical works throughout the day, WETA Classical presents scheduled programs that are created or hosted by WETA Classical staff. These ongoing productions showcase world-class artists in performance, often at distinguished venues and cultural institutions around the D.C. Metro area. Here below are a few of the special offerings scheduled for November.



A Far Cry

YOUNG & EVIN

Front Row Washington

Monday, November 7 at 9 p.m.

WETA Classical host and producer John Banther, who creates this weekly broadcast and the Classical Breakdown podcast, recommends tuning in to hear the Grammy-nominated, self-conducted Boston chamber orchestra A Far Cry present a spirited concert recorded at D.C.'s Dumbarton Oaks. The program features three works by living composers, including the April 2022 world premiere of New York-based musician David Crowell's *Woven in Earth and Sky*, commissioned by Dumbarton Oaks for their 75th anniversary concert.

Front Row Washington *airs Mondays at 9 p.m. on WETA Classical*

Choral Showcase

Sunday, November 27 at 9 p.m.

Wweekday midday host Bill Bukowski programs this showcase of the best in choral music, presenting vocal music in late November to help listeners kick off the holiday season. The Thanksgiving weekend program is a special presentation of works by Benjamin Britten, including his cantata *Saint Nicholas*, Op. 42, which features an array of choirs and soloists with the English Chamber Orchestra led by Matthew Best.

Choral Showcase *airs Sundays at 9 p.m. on WETA Classical*



St. Nicholas

14TH-CENTURY BOOK OF HOURS/LIBRARY OF WALES

Opera Matinee

Saturday, November 5 at 1 p.m.

L'*Amant anonyme*, the only extant opera by 18th-century composer Joseph Bologne, the Chevalier de Saint-Georges, spotlights a grieving widow and the secret admirer who anonymously sends her gifts while waiting for her heart to heal. This *Opera Matinee* broadcast of the lavish production by Chicago's Haymarket Opera Company is sung in French with an international cast and features a full orchestra of rarely heard late-eighteenth-century instruments.

Opera Matinee *airs Saturdays at 1 p.m. with occasional variations to the start time. Live broadcasts from the Metropolitan Opera will resume in January 2023.*



L'Amant anonyme

ELLIOT MANDEL/HAYMARKET OPERA COMPANY, CHICAGO

Vote in November's Classical Countdown on WETA Classical

As part of an annual Thanksgiving tradition, WETA Classical listeners can help choose music selections that will be featured on the air in November's "Classical Countdown." The "polls" are open at weta.org/countdown, Monday-Sunday, November 7-13 for voting on a wide array of popularly acclaimed classical works. After votes are tallied, the top 100 pieces will be played November 21-24 on WETA Classical, counting down to the ultimate favorite, which airs at 8 p.m. on Thanksgiving Day. Choose your preferred pieces and vote!

Classical for Washington



SCOTT SUCHMAN/NATIONAL SYMPHONY ORCHESTRA

Gianandrea Noseda and the NSO at their Season Opening Gala

NSO Showcase Returns for an Exciting New Season

Broadcasts air first Wednesday of each month at 9 p.m. on WETA Classical

By Nicole Lacroix, on-air host

November is an important month in Washington. We have the mid-term elections, Thanksgiving...and the return of NSO *Showcase* on WETA Classical! Appropriately, on the **Wednesday, November 2** broadcast, we begin our season with a distinctly American note as National Symphony Orchestra Music Director Gianandrea Noseda leads a program devoted to U.S. composers Samuel Barber, Leonard Bernstein and George Gershwin — with Dvořák's *New World* Symphony as the grand finale.

Traditionally, the December NSO *Showcase* broadcast presents Handel's *Messiah* to mark the holidays, and this year, we will feature the dynamic Apollo's Fire ensemble conducted by Jeannette Sorrell, one of the stars of the Early Music firmament.

Maestro Noseda returns in January for a bittersweet concert. It begins with Brahms' *Tragic Overture*, followed by Mozart's well-loved *Eine Kleine Nachtmusik*. The American pianist Nicholas Angelich — who passed away this spring at age 51 — is memorialized in a performance from early 2019 of Schumann's *Piano Concerto*. The concert ends with Shostakovich's 6th Symphony, a work whose unusual format has long puzzled music analysts.

As we look forward to the rest of the season, guess who is celebrating his 150th birthday on April 1? Sergei Rachmaninoff was born in 1873, and NSO *Showcase*'s April program will pay tribute to him with a memorable performance of the virtuosic *Piano Concerto No. 3* featuring soloist Denis Kozhukhin.

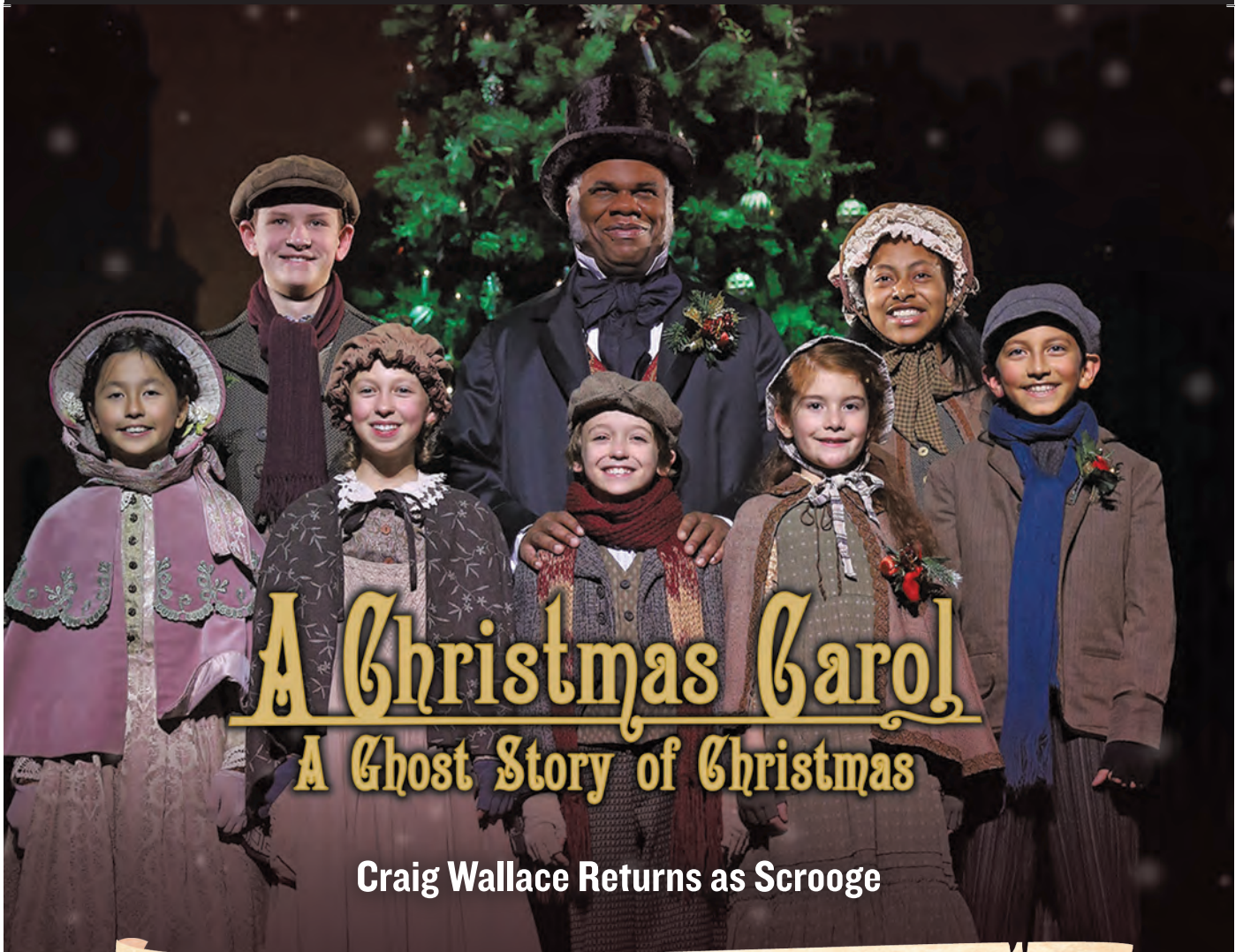
As Gary Ginstling, departing executive director of the National Symphony Orchestra remarked during the NSO Season Opening Gala, "I believe strongly that the NSO's role in our community is more important than ever. Gathering live together in a spectacular space such as the Kennedy Center to hear a hundred talented musicians, many playing on instruments that were designed hundreds of years ago, is an opportunity for all of us to experience, if only for an hour or two, the best of humanity and our creative potential. I know that the NSO will continue to present dynamic performances and breathtaking artists." We at WETA Classical are honored to bring you the highlights of this bounty every month on NSO *Showcase*.

Join me for the broadcasts, which air the first Wednesday of each month at 9 p.m. and stream all month long on our website, wetaclassical.org.

WETA Passport

Stream *Masterpiece* dramas and much more with WETA Passport, our popular member benefit that provides you with access to an extensive library of the best public television programs! You're ready to activate now at pbs.org/passport if you see a four-word activation code above your name and address at left; or go to weta.org/passport to make your qualifying donation of \$60 (or \$5 monthly) to start enjoying WETA Passport today.


ADVERTISEMENT



Nov. 18 - Dec. 31, 2022

by Charles Dickens; adapted by Michael Wilson
directed by Michael Baron

Season Sponsors:  

Lead Sponsor: 

Production Sponsors:  

Tickets Available!

www.fords.org

(888) 616-0270

#FordsCarol

Photo of Craig Wallace and the young cast of *A Christmas Carol* (2019) by Carol Rosegg.