

WETA



MAY 2022
MAGAZINE FOR MEMBERS



WETA co-production airs
Tuesday, May 17 at 9 p.m.
on WETA PBS & WETA Metro

LIONEL RICHIE

The Library of Congress
Gershwin Prize for Popular Song

WETA celebrates Asian American & Pacific Islander Heritage Month,
marks Memorial Day, and presents new *Signature Dish* episode

WETA Focus



In May, we at WETA are delighted to bring to a nationwide audience the latest program in the ongoing series *The Library of Congress Gershwin Prize for Popular Song*. This year spotlighting honoree Lionel Richie, the WETA co-production presents a vibrant, loving celebration of the pop music icon and his artistry. We were glad to partner again with Librarian of Congress Dr. Carla Hayden and her staff, and production company Bounce, to present to PBS viewers this wonderful series, which we welcome back after a hiatus due to the pandemic.

Also this month, WETA honors Asian American and Pacific Islander Heritage Month with a slate of documentaries across our channels WETA PBS, WETA Metro and WETA World. Among the many offerings is our own five-part Peabody Award-winning series *Asian Americans*, which premiered in 2020, exploring the significant role of Asian Americans in U.S. history. A May heritage month program list, airdates and descriptions can be found at weta.org/asian-pacific.

In other May presentations, we broadcast our annual co-production *National Memorial Day Concert*, which honors the service and sacrifice of America's men and women in uniform. Illuminating our hometown, our culture series *WETA Arts* spotlights the 100th anniversary of the dedication of the Lincoln Memorial; and we also debut a new episode of our engaging local restaurant series *Signature Dish*.

Enjoy these many fine offerings and much more in May; and thank you for your support.

Sharon Percy Rockefeller

Sharon Percy Rockefeller, president
and chief executive officer, WETA

Special note: We apologize if your WETA Magazine was late this month. Our longtime printer/distributor suspended operations suddenly in April; paper and labor shortages are impacting the printing industry heavily. We know this publication is important to you; and we have been working quickly to ensure timely production and delivery moving forward. Each month, pending the distribution of the magazine via the mail, WETA posts viewable pages and downloadable files at weta.org/magazine.



COURTESY CAPITAL CONCERTS

National Memorial Day Concert 2022

**WETA co-production airs Sunday, May 29 at 8 p.m.
on WETA PBS & WETA Metro; stream on the PBS App**

In an annual tradition, WETA presents to the nation via PBS the special broadcast *National Memorial Day Concert*, which for three decades has brought viewers together to pay tribute to the service and sacrifice of American men and women in uniform, their families at home, and all those who have given their lives for the country. This year's 90-minute program, a co-production of WETA and Capital Concerts, features all-new content and the return of acclaimed actors and co-hosts Gary Sinise and Joe Mantegna, who are joined by renowned pops conductor Jack Everly, and the National Symphony Orchestra. As of presstime, additional

program participants include actress Jean Smart; performer Lea Salonga; actress Mary McCormack; country music singer-songwriter Craig Morgan; Broadway/television actor Norm Lewis; and General Mark A. Milley, Chairman of the Joint Chiefs of Staff. The show repeats at 9:30 p.m. on May 29 and re-airs Monday, May 30 at 9 p.m.

National Memorial Day Concert is made possible by grants from: The Horatio Alger Association of Distinguished Americans, the National Park Service, the Corporation for Public Broadcasting, the Department of the Army, General Dynamics, PBS and public television stations nationwide. Air travel is provided by American Airlines.

WETA — ON THE AIR & ONLINE

WETA PBS

26.1 via antenna
Comcast 26, 219, 800, 1026
Cox 26, 1003, 1026
DirecTV 26, 26-1, Stream
Dish 8076 Fios 26, 526
RCN 26, 613

WETA UK

26.2 via antenna
Comcast 265, 1146
Cox 800
Fios 474
RCN 39, 602

WETA PBS Kids

26.3 via antenna
Comcast 266, 1147
Cox 801
Fios 472
RCN 38

WETA World

26.4 via antenna
Comcast 270, 1148
Cox 802
Fios 475
RCN 37

WETA TV Highlights

Ridley Road on Masterpiece

Sundays, May 1, 8, 15 & 22 at 9 p.m.

on WETA PBS & WETA Metro;

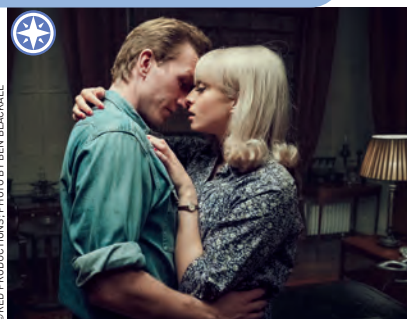
binge-watch on WETA Passport

In the new *Masterpiece* drama *Ridley Road*, it is summer 1962, and London is swinging with new music, hip fashions, and an irresistible hedonistic spirit. But in this colorful, tumultuous time, the metropolis is also seething with anti-Semitic violence incited by homegrown neo-Nazis. The four-part series, based on Jo Bloom's novel and inspired by true events, stars Agnes O'Casey as Vivien Epstein, a young Jewish hairdresser who fits right into London's mod scene, while secretly infiltrating the British neo-Nazi hierarchy as a spy on behalf of Jewish antifascists. Rory Kinnear (*No Time to Die*) portrays Colin Jordan, the real-life leader of Britain's post-World War II Nazi movement, and Tom Varey (*Game of Thrones*) plays Jack, Vivien's true love.

In the story, Vivien tries to find Jack, who has gone missing. He has been recruited by the 62 Group in London as a mole to infiltrate the violent fascist National Socialist Movement. Vivien is also recruited and must alter her look, her name and her personality to undertake her mission.



CRED PRODUCTIONS; PHOTO BY BEN BLACKALL



COURTESY MASTERPIECE

Downton Abbey, Series 1 on Masterpiece

Sunday, May 8, 10 a.m.-6 p.m. on WETA PBS

See how the blockbuster drama began! WETA presents the entire first season of *Masterpiece's* most popular production, following the lives of members of the noble Crawley family and the staff who serve them at their rural England estate. The production features a superb cast, including Hugh Bonneville, Dame Maggie Smith, Elizabeth McGovern and, pictured, Dan Stevens and Michelle Dockery.

As the series begins, it is 1912 and *The Titanic* has sunk, taking down with it the estate's closest male heirs. Lord Grantham has only daughters — albeit marriageable ones. His nearest male relative is a bachelor and city lawyer, who must learn how to manage a country estate, with its servants, hunts, garden parties, and intrigues.

Cobra, Series 1 on Thriller Thursdays

Thursdays at 9 p.m. starting May 12 on WETA PBS

Joining the Thursday-night thriller lineup alongside crime series *Midsomer Murders* (8 p.m.) and *The Fall* (10 p.m.) is *Cobra*, a drama that follows the British Prime Minister and his Cabinet Office Briefing Room A (COBRA) committee, comprised of contingency planners and senior politicians, as they navigate a major national crisis. Written by the screenwriter of *The Tunnel*, the series features a talented cast led by Robert Carlyle, Victoria Hamilton, Richard Dormer, David Haig and Lucy Cohu. In the storyline, on the brink of a major geomagnetic solar storm, the team develops plans to guide the country through the tense crisis. We follow their missteps, political conflicts, personal dramas and more as they play out.



COURTESY © SKY UK LIMITED

For program and membership inquiries, visit weta.org or call 703-998-2724.

WETA Metro

26.5 via antenna
weta.org/livestream
PBS Video App
YouTube TV
Fios 470
RCN 599

WETA Online

weta.org
weta.org/passport
weta.org/pbsapp
weta.org/learningmedia

WETA Classical

WETA 90.9 FM Washington, D.C.
WGMS 89.1 FM Hagerstown
wetaclassical.org
vivalavoce.org
WETA Classical App



**WETA production airs Monday, May 2 at 9 p.m.
on WETA PBS, 8 p.m. on WETA Metro;
repeats May 23; stream on the PBS App**

WETA production *Signature Dish* spotlights the national capital area's culinary delights, showcasing standout dishes at the region's best restaurants. In each program, series host Seth Tillman visits three restaurants to meet the proprietors and chefs and learn about their signature offerings. This month, WETA presents the new episode *West African Cuisine* in addition to series encores. A dynamic cuisine that emphasizes bold flavors and colors, West African food has long been under-represented in the D.C. area. In this episode, Seth

meets chefs who are putting their own twists on West African dishes. In DC's U Street neighborhood, Tillman samples *egusi*, a

Ghanaian soup served at **Appioo African Bar & Grill**. *Yassa chicken*, a Senegalese smothered chicken dish served with rice and caramelized onions, is on the menu at **Chez Dior** in Hyattsville, MD. And **Mansa Kunda** in Takoma Park, MD, offers the Gambian specialty *ebbeh*, a stew thickened with yucca and dyed bright orange by palm oil, which includes an abundance of seafood, including whole blue crabs that diners crack open with their hands.

Watch all five current *Signature Dish* episodes in a special presentation, Monday, May 30, 2:30 p.m.-5 p.m. on WETA PBS. Episodes also stream on the PBS Video App and weta.org. Stay tuned for more new episodes of *Signature Dish* this fall.



Seth Tillman and chef/owner Prince Matey at Appioo

WETA Arts

**WETA production airs Monday, May 9 at 9:30 p.m. on WETA PBS,
8:30 p.m. on WETA Metro; stream on the PBS App**

May 30, 2022, marks the 100th anniversary of the dedication of the Lincoln Memorial, honoring the 16th president of the United States, Abraham Lincoln. For the May episode of WETA production *WETA Arts*, host Felicia Curry is joined by Mike Litterst, chief of communications for the National Mall and Memorial Parks. They look back at the surprising history of the iconic structure and look forward to how the National Park Service will celebrate the milestone. Also on the program is a special look at *Unknown*, a new chamber opera commissioned by UrbanArias that commemorates the 100th anniversary of the dedication of the Tomb of the Unknown Soldier at Arlington National Cemetery.

This month's *WETA Arts* program repeats May 23 at 9:30 p.m. on WETA PBS, and 8:30 p.m. on WETA Metro; and May 30 at 10:30 p.m. on both channels. Stream the program on the PBS Video App or WETA's website, weta.org, where previous episodes are available for viewing as well.



Felicia Curry with Mike Litterst

Great Performances in May

**Fridays, May 13, 20 & 27 at 9 p.m. on WETA PBS &
WETA Metro; stream on the PBS App**

Friday-night stage arts series *Great Performances* features three entertaining programs this month:

- ***Anything Goes*** (May 13) • Enjoy this London production of Cole Porter's classic musical led by Tony winner Sutton Foster, left, who reprises her role as Reno Sweeney. Songs include "I Get a Kick Out of You" and "You're the Top."
- ***Merry Wives*** (May 20) • Experience Shakespeare's comedic masterpiece from the Public Theater's Shakespeare in the Park; the play is set in South Harlem and tells the story of the trickster Falstaff and the wily wives who outwit him.
- ***Keeping Company with Sondheim*** (May 27) • Take an inside look at the reimagined gender-swapped production as it returns to Broadway during the COVID-19 pandemic. The program features interviews with cast members Katrina Lenk, Patti LuPone and others.



COURTESY TRISTRAM KENTON

LIBRARY OF CONGRESS

GERSHWIN PRIZE FOR POPULAR SONG

LIONEL RICHIE

**WETA co-production airs Tuesday,
May 17 at 9 p.m. on WETA PBS & WETA Metro**

Famed singer-songwriter Lionel Richie is in the spotlight as WETA presents to a nationwide audience a new performance special honoring the pop music icon's receipt of the 2022 Library of Congress Gershwin Prize for Popular Song. WETA co-produced the hour-long program, recorded March 9 at the Daughters of the American Revolution (DAR) Constitution Hall in Washington before a live audience. The special, *Lionel Richie: The Library of Congress Gershwin Prize for Popular Song*, features the award ceremony and a concert of musical tributes to Richie by an array of all-star talent delivering the artist's top songs.

The program features vibrant performances of Richie's songs by previous Gershwin Prize honoree Gloria Estefan, the group Boyz II Men, Luke Bryan, Andra Day, Chris Stapleton, Miguel, Yolanda Adams — and Richie himself. Actor/comedian Anthony Anderson is the onstage host.

Known for his smooth voice and deft touch with the romantic ballad, Richie is part of the fabric of pop music and American culture. A songwriting superstar and 2022 Rock & Roll Hall of Fame nominee, he is known for composing and producing mega-hits. Richie achieved the distinction of writing No. 1 songs for 11 consecutive years. Among his hits are "Endless Love," "Lady," "Truly," "All Night Long," "Hello," "Say You, Say Me" and "Dancing on the Ceiling."

Richie is also known for co-writing one of the most significant pop songs in history, "We Are the World," for USA for Africa. His song catalog also includes his early

work with The Commodores — songs such as "Three Times a Lady," "Still" and "Easy." Beyond his own music career, Richie mentors young artists as a judge on ABC's *American Idol*. The Tuskegee, Alabama, native has sold more than 125 million albums worldwide. He has won an Oscar, a Golden Globe, and four Grammy Awards; he earned the distinction of MusicCares Person of the Year in 2016; and he was a Kennedy Center Honoree in 2017.

During the program, Richie is presented with the Gershwin Prize by Dr. Carla Hayden, Librarian of Congress, and a delegation of Members of Congress. The Prize, named for the distinguished songwriting team of George and Ira Gershwin, celebrates the work of artists whose careers reflect their influence, impact and achievement in promoting song as a vehicle of musical expression and cultural understanding.

Previous recipients of the Prize are Paul Simon; Stevie Wonder; Sir Paul McCartney; songwriting duo Burt Bacharach and the late Hal David; Carole King; Billy Joel; Willie Nelson; Smokey Robinson; Tony Bennett; Emilio and Gloria Estefan; and Garth Brooks. WETA has produced the television broadcast for PBS since the award's inception in 2007. This year's program is a co-production of WETA; Bounce, a division of Concord Music Group; and the Library of Congress.

Lionel Richie: The Library of Congress Gershwin Prize for Popular Song streams on the PBS Video App and repeats May 22 at 4 p.m. on WETA PBS. For more about the production, visit pbs.org/Gershwin-Prize.

SHAWN MILLER/LIBRARY OF CONGRESS



COURTESY JOE SHYMANSKI/SORA DEVORE

Production funding for *Lionel Richie: The Library of Congress Gershwin Prize for Popular Song* is provided by Wells Fargo, AARP, Universal Music Group, ASCAP, The Leonore S. Gershwin Trust, The Ira & Leonore Gershwin Philanthropic Fund, and William C. Burton. Major funding is provided by the Corporation for Public Broadcasting. Travel provided by United Airlines.

WETA Celebrates Asian American & Pacific Islander Heritage Month

Programming airs throughout May on WETA PBS, WETA Metro & WETA World



COURTESY ZUMA PRESS/ALAMY

WETA marks Asian American and Pacific Islander Heritage Month with a wide selection of intriguing programs. A program list and airdates for WETA PBS is below; visit weta.org/asian-pacific for complete heritage month offerings across WETA channels, including WETA Metro and WETA World (which features nearly 60 related programs).

In addition to WETA's five-part, Peabody Award-winning history series *Asian Americans*, the slate of offerings includes several notable new primetime documentaries, airing on WETA PBS and WETA Metro:

- **Waterman – Duke: Ambassador of Aloha: American Masters** (May 10, 9 p.m.) spotlights the inspiring story and considerable impact of five-time Olympic medalist Duke Kahanamoku, who shattered swimming records and globalized surfing while overcoming racism in a lifetime of personal challenges.

- **Plague at the Golden Gate: American Experience** (May 24, 9 p.m.), a gripping two-hour film directed by Li-Shin Yu, explores how an outbreak of bubonic plague in 1900 set off fear and anti-Asian sentiment in San Francisco — and a race against time by health officials to save the city from the deadly disease.

- **Rising Against Asian Hate: One Day in March** (May 31, 9 p.m.) follows the aftermath of the March 2021 mass shootings at three spas in Atlanta, chronicling how the Asian American community came together to fight hate.

Heritage Month Programs on WETA PBS

Visit weta.org/asian-pacific for complete listings across WETA channels

Asian Americans (5 eps)

Pt 1 & 2: Sat 5/7, 8-10pm;

Pts 3-5: Sat 5/14, 8-11pm

The Story of China

Sundays 5/1, 5/15, noon; Rpts

Fridays, 5/6 through 5/20, 3pm

Finding Your Roots with Henry

Louis Gates, Jr. Tue 5/3, 8pm;

Rpts Sat 5/7, 7pm, 11pm

Mr. Tornado: American

Experience Sat 5/7, 10pm

Signature Dish:

Ep 2: Southeast Asian Specialties

Mon 5/9, 9pm

Ep 4: Masters of Spice

Mon 5/16, 9:30pm

Waterman – Duke: Ambassador of

Aloha: American Masters

Tue 5/10, 9pm

Pacific Heartbeat, Series 8, 9 and

10 films weekdays, 3pm

(except Fri) starting May 10

Pacific Heartbeat, Series 11:

High Tide, Don't Hide

Sun 5/15, 4pm

James & Isey Sun 5/22, 2pm

Loimata, the Sweetest Tears

Sun 5/22, 3pm

The Healer Stones of Kapaemahu

Sat 5/28, 10pm

Lucky Chow Saturdays, noon;

Mon-Thur 5/16-5/19, 4pm

Tyrus Wong: American Masters

Tue 5/17, 10pm

Amy Tan: Unintended Memoir:

American Masters

Sat 5/21, 8pm, midnight;

Rpts Sun 5/22, 11pm

The Registry Sat 5/21, 10pm;

Rpts 2am

Independent Lens: One Child

Nation Mon 5/23, 10pm

Plague at the Golden Gate:

American Experience

Tue 5/24, 9pm;

Rpts Sun 5/29, 2pm

Betrayed: Surviving an American

Concentration Camp

Sat 5/28, 8pm; Rpts midnight;

Sun 5/29, 11pm

Norman Mineta and His Legacy:

An American Story

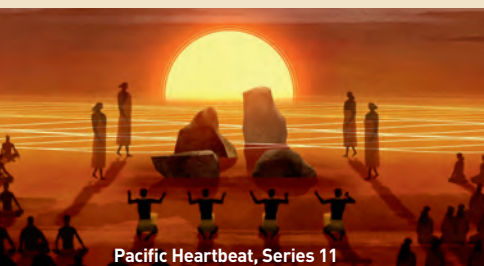
Sat 5/28, 9pm; Rpts 1am;

Sun 5/29, 4pm, midnight

Rising Against Asian Hate:

One Day in March

Tue 5/31, 9pm



Pacific Heartbeat, Series 11



Amy Tan



American Masters: Waterman



Mr. Tornado

Dinosaurs, Ships and More on NOVA

Wednesdays at 9 p.m. on WETA PBS & WETA Metro; stream on the PBS App

The two-part NOVA miniseries *Dinosaur Apocalypse* (May 11, 9 & 10 p.m.), at right, features Sir David Attenborough telling the dramatic story of an astonishing fossil-dig site in North Dakota where scientists uncover clues that could paint a more detailed picture than ever before of what happened when an asteroid struck Earth 66 million years ago and wiped out the dinosaurs and other creatures of the Cretaceous period. Hour One, at 9 p.m., is titled *The New Evidence*, exploring whether the fossil remains can be linked to that impact event. Hour Two, *The Last Day*, at 10 p.m., examines new ideas about how the dinosaurs died.

Other NOVA episodes this month include *Why Ships Crash* (May 18, 9 p.m.), spotlighting the disaster that unfolded when a colossal container ship crashed into the bank of the Suez Canal in March 2021, grinding international supply chains to a halt; and *Ice Age Footprints* (May 25, 9 p.m.), which visits New Mexico's White Sands National Park to explore the meaning of evidence that Ice Age humans crossed paths with enormous sloths and mammoths.



Lucy Worsley Investigates

Sundays, May 15 & 22 at 8 p.m. on WETA PBS & WETA Metro; stream on the PBS App

Who killed the princes in the Tower of London in 1483? Was King George III really mad? What actually caused the Black Death? Why did a witch hunt craze sweep through 16th-century Britain and America? Popular British historian Lucy Worsley turns sleuth to reexamine these enduring questions. In each investigation, Worsley explores a single event using historical and contemporary evidence and a range of experts to reframe the past. The occasional series uncovers new victors and victims, challenges perceptions and provides fresh answers to each renowned mystery. *Princes in the Tower* airs May 15, followed by *Madness of King George*, May 22. Two additional episodes will air in the fall.



Colombia: Wild and Free

Wednesdays, May 18 & 25 at 10 p.m. on WETA PBS & WETA Metro; stream on the PBS App

A two-part film journeys to South America to explore the magnificent flora and fauna of Colombia, from the wild, largely deserted Pacific coast to the snow-covered volcanoes of the Andes, from the plains of the Orinoco region to the rainforests of the Amazon. *Two Rivers* (May 18) explores the eastern region of Colombia, a land defined by the Orinoco and Amazon rivers; along the way, meet wildlife including jaguars; capybaras; anacondas; and pygmy marmosets, the world's smallest monkeys. *From the Pacific to the Andes* (May 25) journeys to the west coast of the country, where humpback whales give birth and fish hunt for crabs in the mangrove forests, and then ascends volcanoes that are home to spectacled bears, condors and hummingbirds.



May is Mental Health Awareness Month. For a wide array of resources on mental health topics, visit [WellBeings.org](https://www.wellbeings.org). WETA created the Well Beings campaign to address the critical health needs in America, including mental health. Tune in for themed programming on May 6, 9-11 p.m. on WETA PBS, and in June, watch for the new WETA film **Ken Burns Presents *Hiding in Plain Sight: Youth Mental Illness***, a Film by Erik Ewers and Christopher Loren Ewers.

Stream with WETA Passport



Stream your favorite shows with WETA Passport, a member benefit that offers access to a vast library of superb programs available for streaming on demand. To learn how to access programming with WETA Passport, visit weta.org/passport/FAQ.

Ridley Road on Masterpiece • A young Jewish woman in turbulent, colorful 1962 London must secretly infiltrate a British neo-Nazi movement's hierarchy on behalf of Jewish antifascists to spy on the movement and locate her missing lover. Newcomer Agnes O'Casey stars as Vivien Epstein (pictured); Rory Kinnear is Colin Jordan, the real-life leader of Britain's post-World War II Nazi movement; and Tom Varey portrays Jack, Vivien's true love. The four-part series, which premieres this month on WETA PBS and WETA Metro, is available as a special binge-viewing streaming opportunity with WETA Passport as of **May 1**, the night of its WETA broadcast premiere.



© RED PRODUCTIONS

Alibi • In this romantic dark comedy, two people are brought together in the most unusual of circumstances. Starring Michael Kitchen (*Foyle's War*) and Sophie Okonedo (*Hotel Rwanda*) (pictured), Phyllis Logan (*Downton Abbey*) and Tom Knight (*Harry Potter*, *EastEnders*), and written by acclaimed screenwriter Paul Abbott, known for the series *Reckless* and *Touching Evil*, the three-part 2003 drama features a rollercoaster of love, murder and lies. As the story begins, Greg Brentwood throws an anniversary party for his wife, Linda, at their house. Later that night, Marcey, one of the caterers, returns to the house to retrieve her handbag and walks in on an astonishing scene that binds her to Greg. Binge-watch with WETA Passport beginning **May 1**.



COURTESY BANIJAY

The Hunter, Series 1-3 • Based on a true story, Italian drama *Il Cacciatore* follows Saverio Barone, a young and ambitious provincial Sicilian prosecutor with a killer instinct for tracking down top *mafiosi*. He becomes known as "The Hunter," but his success will come at a huge personal cost. As the drama opens, Italy and the mafia are at war in the early 1990s, as rival families fight for control of Sicily's streets. Barone steps in to fight for the innocents caught up in the violence. The production is inspired by true-life anti-mafia magistrate Alfonso Sabella and features 20 episodes, in Italian with English subtitles. The drama, which premieres May 17 on WETA UK, is available as of **May 12** for binge-viewing with WETA Passport.



COURTESY PBS/WALTER'S CHOICE



COURTESY BANIJAY

Hamish Macbeth

Robert Carlyle stars. Stream the series with WETA Passport as of **May 1**. See page 17 (WETA UK) for details.



COURTESY BANIJAY

The Hour

Dominic West and Romola Garai star. Stream the series with WETA Passport as of **May 1**. See page 17 for details.

Primetime

WETA PBS in May



Visit weta.org/schedule for the most up-to-date schedule information.

 Denotes WETA productions, co-productions and presentations

	8:00	8:30	9:00	9:30	10:00	10:30
1 Sun	Call the Midwife, Series 11 (Pt 7 of 8)		Ridley Road on Masterpiece (Pt 1 of 4)		My Grandparents' War, Series 1 (Ep 1 of 4. <i>Helena Bonham Carter</i>)	
2 Mon	Antiques Roadshow: Ground for Sculpture, Hour 3		Signature Dish (West African Cuisine)	Signature Dish (Cooking with Fire)	Independent Lens: Try Harder! (to 11:30pm)	
3 Tue	Finding Your Roots w/ Henry Louis Gates, Jr., Encore: <i>Reporting on the Reporters</i>		Flood in the Desert: American Experience		Frontline: The Power of Big Oil (Pt 3 of 3)	
4 Wed	Nature: My Garden of a Thousand Bees		NOVA: The Hindenburg: The New Evidence		Extinction: The Facts	
5 Thu	Midsomer Murders, Series 20 (Ep 10 of 12. <i>Till Death Do Us Part, Pt 2</i>)		The Bletchley Circle, Series 2 (Ep 4 of 4. <i>Uncustomed Goods, Pt 2</i>)		The Fall, Series 2 (Pt 2 of 6)	
6 Fri	Washington Week	History with David Rubenstein, Season 3	The Definition of Insanity		Not Broken	
7 Sat	Asian Americans (Pt 1 of 5. <i>Breaking Ground</i>)		Asian Americans (Pt 2 of 5. <i>A Question of Loyalty</i>)		Mr. Tornado: American Experience	
8 Sun	Call the Midwife, Series 11 (Pt 8 of 8)		Ridley Road on Masterpiece (Pt 2 of 4)		My Grandparents' War, Series 1 (Ep 2 of 4. <i>Mark Rylance</i>)	
9 Mon	Antiques Roadshow: Colonial Williamsburg, Hour 1		Signature Dish (South-east Asian Specialties)	WETA Arts	Independent Lens: When Claude Got Shot (to 11:30pm)	
10 Tue	Finding Your Roots w/ Henry Louis Gates, Jr., Encore: <i>No Laughing Matter</i>		Waterman – Duke: Ambassador of Aloha: American Masters			Beyond the Canvas, Season 3
11 Wed	Nature: The Egg: Life's Perfect Invention		NOVA: Dinosaur Apocalypse: The New Evidence		NOVA: Dinosaur Apocalypse: The Last Day	
12 Thu	Midsomer Murders, Series 20 (Ep 11 of 12. <i>Send in the Clowns, Pt 1</i>)		Cobra, Series 1 (Pt 1 of 6)		The Fall, Series 2 (Pt 3 of 6)	
13 Fri	Washington Week	History with David Rubenstein, Season 3	Great Performances: <i>Anything Goes</i> (to 11:30pm)			
14 Sat	Asian Americans (Pt 3 of 5. <i>Good Americans</i>)		Asian Americans (Pt 4 of 5. <i>Generation Rising</i>)		Asian Americans (Pt 5 of 5. <i>Breaking Through</i>)	
15 Sun	Lucy Worsley Investigates (Ep 1 of 4. <i>Princes in the Tower</i>)		Ridley Road on Masterpiece (Pt 3 of 4)		My Grandparents' War, Series 1 (Ep 3 of 4. <i>Kristin Scott Thomas</i>)	
16 Mon	Antiques Roadshow: Colonial Williamsburg, Hour 2		Signature Dish (Caribbean Favorites)	Signature Dish (Masters of Spice)	Independent Lens: Scenes from the Glittering World	
17 Tue	Finding Your Roots w/ Henry Louis Gates, Jr., Encore: <i>Freedom Tales</i>		Lionel Richie: The Library of Congress Gershwin Prize for Popular Song		Tyrus Wong: American Masters (to 11:30pm)	
18 Wed	Nature: Big Bend: The Wild Frontier of Texas		NOVA: Why Ships Crash		Colombia: Wild and Free (Ep 1 of 2. <i>Two Rivers</i>)	
19 Thu	Midsomer Murders, Series 20 (Ep 12 of 12. <i>Send in the Clowns, Pt 2</i>)		Cobra, Series 1 (Pt 2 of 6)		The Fall, Series 2 (Pt 4 of 6)	
20 Fri	Washington Week	History with David Rubenstein, Season 3	Great Performances: <i>Merry Wives</i>			
21 Sat	Amy Tan: Unintended Memoir: American Masters				The Registry	
22 Sun	Lucy Worsley Investigates (Ep 2 of 4. <i>Madness of King George</i>)		Ridley Road on Masterpiece (Pt 4 of 4)		My Grandparents' War, Series 1 (Ep 4 of 4. <i>Carey Mulligan</i>)	
23 Mon	Antiques Roadshow: Colonial Williamsburg, Hour 3		Signature Dish (West African Cuisine)	WETA Arts	Independent Lens: One Child Nation (to 11:30pm)	
24 Tue	Finding Your Roots w/ Henry Louis Gates, Jr., Encore: <i>Breaking the Silences</i>		Plague at the Golden Gate: American Experience			
25 Wed	Nature: Equus: Story of the Horse: Origins		NOVA: Ice Age Footprints		Colombia: Wild and Free (Ep 2 of 2. <i>From the Pacific to the Andes</i>)	
26 Thu	Midsomer Murders, Series 16 (Ep 1 of 10. <i>The Christmas Haunting, Pt 1</i>)		Cobra, Series 1 (Pt 3 of 6)		The Fall, Series 2 (Pt 5 of 6)	
27 Fri	Washington Week	History with David Rubenstein, Season 3	Great Performances: <i>Keeping Company with Sondheim</i>			Beyond the Canvas, Season 3
28 Sat	Betrayed: Surviving an American Concentration Camp		Norman Mineta and His Legacy: An American Story		Pacific Heartbeat, Series 11: The Healer Stones of Kapaemahu	
29 Sun	National Memorial Day Concert 2022			National Memorial Day Concert 2022 (encore)		
30 Mon	Last Battle: The Fight for America's World War I Memorial		National Memorial Day Concert 2022 (encore)			WETA Arts
31 Tue	Finding Your Roots w/ Henry Louis Gates, Jr., Encore: <i>Dreaming of a New Land</i>		Rising Against Asian Hate: One Day in March		Frontline: Police on Trial (to 11:30pm)	
	8:00	8:30	9:00	9:30	10:00	10:30

PBS NewsHour airs weeknights at 7 p.m.
PBS News Weekend airs Sat/Sun, 6 p.m.

Amanpour and Company airs late weeknights (check listings).

TV Listings

WETA PBS in May



Listings are accurate as of press time. For late-breaking program updates, visit weta.org/tv or call 703-998-2724.

WETA PBS is devoted to children's educational programming 8 a.m.-3 p.m., Monday-Friday. For 24 hours of children's programming each day, tune in to the WETA PBS Kids channel. See page 15 for information.

Program Key

Blue type — WETA productions, co-productions and presentations.

R — Repeat of recent programming.



©RED PRODUCTIONS. PHOTO BY BEN BLACKALL

Sundays, May 1, 8, 15 & 22 at 9 p.m. on WETA PBS & WETA Metro

The drama *Ridley Road on Masterpiece*, set in 1962 London, follows a young Jewish woman, Vivien, who arrives in the city to seek her missing beau and ends up infiltrating a British neo-Nazi movement both to try to locate him and to spy for a group of antifascists.

Above: newcomer Agnes O'Casey stars. Tom Varey portrays Jack.

1 Sunday

6AM-9AM WETA KIDS PROGRAMMING

9AM WHITE HOUSE CHRONICLE

9:30 TO THE CONTRARY WITH BONNIE ERBE

10AM THIS IS AMERICA AND THE WORLD WITH DENNIS WHOLEY

10:30 THE OPEN MIND

11AM FIRING LINE WITH MARGARET HOOVER — Repeats Saturdays, 6:30am

11:30 TO DINE FOR WITH KATE SULLIVAN

12N THE STORY OF CHINA — Travel with historian Michael Wood as he surveys the 4,000-year story of the world's oldest continuous state, from the ancient past to the present day. *Part 1 of 3. Ancestors/Silk Roads and China Ships.* Explore China's early history with Wood as he joins a million people at a festival devoted to ancient gods, hear the tale of China's bloodthirsty First Emperor, and travel the Silk Road to discover the brilliant Tang dynasty. **Repeats Fri 5/6, 3pm**

2:00 RISE OF THE NAZIS, SERIES 2: DICTATORS AT WAR — *Part 3 of 3. The Home Front.* **R**

3:00 CLIMATE CHANGE—THE FACTS — **R**

4:00 WE REMEMBER: SONGS OF SURVIVORS — **R**

5:00 THE CHAVIS CHRONICLES — A talk show hosted by award-winning journalist, civil rights icon, and intellectual influencer Dr. Benjamin F. Chavis, Jr. features interviews with thought leaders.

5:30 A SEAT AT THE TABLE — A talk show series featuring hosts Denene Millner, Monica Pearson and Christine White gives voice to African American women from their diverse experiences, perspectives and challenges.

6:00 PBS NEWS WEEKEND — Anchored by Geoff Bennett, the WETA production presents in-depth reporting of the day's national and international news. **Repeats Monday, 7am**

6:30 HISTORY WITH DAVID RUBENSTEIN, SEASON 3 — *Episode 4 of 10. Bret Baier.* **R**

7:00 TELL ME MORE WITH KELLY CORRIGAN, SERIES 3 — In a new season of this WETA co-production, *New York Times* bestselling author Kelly Corrigan conducts more interviews with influential people, exploring her guests' humanity and passions. *Episode 4 of 10. Judd Apatow, Filmmaker.*

7:30 ANTIQUES ROADSHOW RECUT — *Women's Work, Pt 2.* **R**

8:00 CALL THE MIDWIFE, SERIES 11 — *Part 7 of 8.* An unforeseen event in Poplar leads Nonnatus House to suffer its biggest threat yet. Timothy returns home from university after falling ill. Sister Hilda and Sister Julianne expect more from Nancy and decide to show her what she is capable of.

9:00 RIDLEY ROAD ON MASTERPIECE — Based on Jo Bloom's bestselling novel, this drama centers on the struggles of British Jews fighting rising neo-Nazism in post-World War II Britain. *Part 1 of 4.* London in the swinging sixties is a hive of violent antisemitism, as Jewish hairdresser Vivien learns when she arrives in search of her beau, Jack.

10:00 MY GRANDPARENTS' WAR — In this reprised series, follow leading actors as they re-trace the footsteps of their grandparents and learn how World War II changed the lives of their families and the world. *Part 1 of 4. Helena Bonham Carter.* Follow Helena Bonham Carter as she explores the heroism of her relatives during World War II — her grandmother, an air warden and outspoken politician, and her grandfather, a diplomat who save hundreds from the Holocaust.

11:00 KEITH HARING: STREET ART BOY: AMERICAN MASTERS — **R**

2 Monday

WEEKDAYS IN MAY:

6AM NHK NEWSLINE

6:30AM BBC WORLD NEWS

7AM (Mondays:) PBS NEWS WEEKEND

7:30 (Mondays:) WASHINGTON WEEK — **R**

7AM (Tuesdays-Saturdays:) PBS NEWS HOUR — **R**

8AM-3PM WETA KIDS PROGRAMMING

5PM AMANPOUR AND COMPANY — Rpt of previous night

6PM BBC WORLD NEWS — *BBC World News Outside Source* (6pm, Mon-Thur); *BBC World News Today* (6pm, Fri)

6:30 BBC WORLD NEWS AMERICA

7:00 PBS NEWS HOUR — Each weeknight, the WETA production provides in-depth analysis of current events with a news summary, live interviews and discussions of domestic and international issues. Judy Woodruff anchors. Visit pbs.org/newshour. **Rpts next day, 7am**



SIGNATURE DISH
A WETA PRODUCTION

Mon., May 2, 9, 16 & 23, 9 p.m. WETA PBS; 8 p.m. WETA Metro

WETA's local production *Signature Dish* showcases standout meals at restaurants around Greater Washington. The series, hosted by Seth Tillman, debuts a new episode on May 2 — *West African Cuisine*. Above: Tillman discusses cuisine with Chez Dior chef Binette Seck.



Tuesday, May 3 at 9 p.m. on WETA PBS & WETA Metro

Flood in the Desert on *American Experience* explores the deadly 1928 collapse of a dam built by William Mulholland to provide water to L.A. The disaster was the second deadliest in California history.

8:00 ANTIQUES ROADSHOW: GROUNDS FOR SCULPTURE, HOUR 3 — Enjoy fascinating finds at Grounds for Sculpture in Hamilton, New Jersey, including a \$100,000 appraisal!

9:00 SIGNATURE DISH — A new WETA production hosted by Seth Tillman showcases standout dishes at restaurants around the national capital area. **Episode 5: West African Cuisine.** In this episode, Seth meets with the chefs who are putting their own twists on the bold flavors and colors of West African recipes. The signature dishes are *egusi*, a Ghanaian stew served at **Appioo** in DC's U Street neighborhood, *yassa chicken*, a Senegalese smothered chicken dish at **Chez Dior** in Hyattsville, MD; and *ebbeh*, a Gambian seafood stew at **Mansa Kunda** in Takoma Park, MD. **Repeats Sun 5/8, 7:30pm; Mon 5/23, 9pm**

9:30 SIGNATURE DISH — Encore: Episode 1. Cooking with Fire. The world's oldest culinary technique, cooking over an open flame, is on vivid display as host Seth Tillman meets three masters of fire who char, roast and smoke their way to unforgettable eats. Signature dishes: Wagyu beef brisket at **2Fifty Texas BBQ** in Riverdale Park, MD; "The Hot Mess" white pizza at **Frankly...Pizza!** in Kensington, MD; and an iconic spiced lamb shoulder at **Maydan** in Northwest DC.

10:00 INDEPENDENT LENS: TRY HARDER! — San Francisco's Lowell High, one of the top public schools in the country, draws high achievers into a fiercely competitive universe. Follow seniors as the pressure to impress college admissions officers intensifies. (90 min.)

3 Tuesday

8:00 FINDING YOUR ROOTS WITH HENRY LOUIS GATES, JR. — In this WETA co-production, join Harvard scholar Henry Louis Gates, Jr., as he delves into the genealogy of famous Americans. Encore episode: *Reporting on the Reporters*. Gates shows journalists Christiane Amanpour, Ann Curry and Lisa Ling that the stories within their own family trees are every bit as compelling as the news stories they have been covering for the world. **Repeats Sat 5/7, 7pm, 11pm**

9:00 FLOOD IN THE DESERT: AMERICAN EXPERIENCE — Learn about the 1928 Los Angeles dam collapse, the second deadliest disaster in California history. A colossal engineering failure, the dam was built by William Mulholland to ensure the growth of Los Angeles by bringing water to the city via aqueduct.

10:00 FRONTLINE: THE POWER OF BIG OIL — *Part 3 of 3.* *Frontline* reports on the fossil fuel industry's history of casting doubt and delaying action on climate change. The program is part of a series tracing the industry's decades of casting doubt on the science, missed opportunities, and the ongoing attempts to hold Big Oil to account.

11:00 AMANPOUR AND COMPANY — Capping primetime programming each weeknight, Christiane Amanpour leads conversations with global thought leaders on contemporary issues. **Repeats next weekday, 5pm**

4 Wednesday

8:00 NATURE: MY GARDEN OF A THOUSAND BEES — A wild-life cameraman spends his time during the pandemic lockdown filming the bees in his U.K. urban garden and discovers the many diverse species and personalities that exist in this insect family.

9:00 NOVA: THE HINDENBURG: THE NEW EVIDENCE — Eighty years after the world's largest airship ignited in a giant fireball, newly discovered footage sparks a reinvestigation of what exactly caused the *Hindenburg* disaster.

10:00 EXTINCTION: THE FACTS — With one million species at threat, naturalist Sir David Attenborough explores extinction and how this crisis has consequences for us all, putting us at greater risk of pandemic diseases.

5 Thursday

8:00 MIDSOMER MURDERS, SERIES 20 — In the drama, DCI John Barnaby and his junior partner DS Jamie Winter investigate murders in the English countryside. **Episode 10 of 12. Till Death Do Us Part, Pt 2.** Barnaby probes the disappearance of a bride.

9:00 THE BLETCHLEY CIRCLE, SERIES 2 — *Episode 4 of 4. Uncustomed Goods, Pt 2.* The women realize there's corruption in the vice squad and decide to intercept the crime ring themselves, with Jean posing as a potential client. Lucy memorizes Marta's coded ledger; returning to Bletchley Park, they use an Enigma machine to try to crack the code.

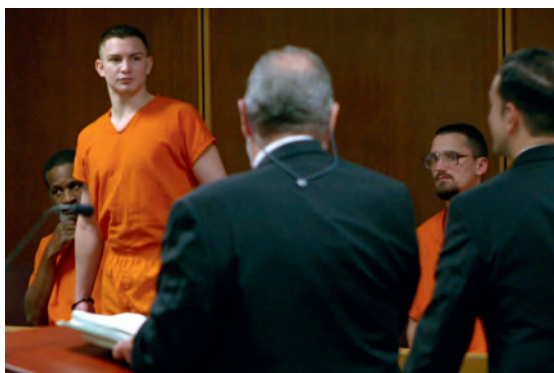
10:00 THE FALL, SERIES 2 — Gillian Anderson and Jamie Dornan star. *Part 2 of 6. Night Darkens the Streets.* As Paul Spector abducts Rose Stagg from her home, her worst fears are realized when he tells her that he knows she went to the police. With Rose missing, the pressure being brought to bear on the police investigation ratchets up yet more. Gibson is forced to face the fact that her words have tipped Spector off about Rose.

6 Friday

8:00 WASHINGTON WEEK — WETA's weekly production, moderated by Yamiche Alcindor, presents a roundtable discussion with award-winning journalists who provide reporting and analysis of the major news stories from the nation's capital. Visit pbs.org/washingtonweek. **Repeats Sat 5/7, 6am, 6:30pm; Mon 5/9, 7:30am**

8:30 HISTORY WITH DAVID RUBENSTEIN, SEASON 3 — In this WETA presentation, Washington, D.C.-based financier and philanthropist David Rubenstein interviews scholars and authors to spotlight the wide breadth of the American story. **Episode 5 of 10. Susan Eisenhower.** **Repeats Sun 5/8, 6:30pm**

9:00 THE DEFINITION OF INSANITY — In this documentary, produced in association with WETA, a team of dedicated Miami-Dade County public servants works to help people with mental illness navigate from lives of



THE DEFINITION OF INSANITY A WETA PRESENTATION

Friday, May 6 at 9 p.m. on WETA PBS

The Definition of Insanity spotlights a humane criminal-justice approach to mental illness, following Miami-Dade County public servants helping people through the Jail Diversion Project.



ASIAN AMERICANS A WETA CO-PRODUCTION

Sats., May 7 & 14 at 8 p.m., WETA PBS; May 12 & 19, WETA Metro
The acclaimed WETA documentary series *Asian Americans*, winner of a Peabody Award, airs in five parts over two nights, spotlighting the fastest-growing racial/ethnic group in the United States and exploring its impact on the country's past, present and future.

tragedy to possibility. The film reveals a humane criminal justice approach to mental illness.

- 10:00 NOT BROKEN** — This documentary explores the lives of seven young people who have mental illnesses, described through their own brave words. The program's subjects come from different places and have had different experiences, but all are fighting to live their dreams despite their mental health challenges.

7 Saturday

- 6AM WASHINGTON WEEK** — R
6:30 FIRING LINE WITH MARGARET HOOVER — R
7AM PBS NEWSHOUR — R
8AM JOSEPH ROSENDO'S TRAVELSCOPE
8:30 RICK STEVES' EUROPE
9AM ANTIQUES ROADSHOW — Repeat of Monday 8 p.m.
10AM THIS OLD HOUSE
10:30 ASK THIS OLD HOUSE
11AM JOANNE WEIR'S PLATES AND PLACES
11:30 KEVIN BELTON'S COOKIN' LOUISIANA
12N LUCKY CHOW
12:30 CHRISTOPHER KIMBALL'S MILK STREET TELEVISION
1:00 NICK STELLINO: STORYTELLER
1:30 LIDIA'S KITCHEN
2:00 IN JULIA'S KITCHEN WITH MASTER CHEFS
2:30 SARA'S WEEKNIGHT MEALS
3:00 JOANNE WEIR'S PLATES AND PLACES
3:30 NEW SCANDINAVIAN COOKING
4:00 COOK'S COUNTRY FROM AMERICA'S TEST KITCHEN
4:30 AMERICA'S TEST KITCHEN FROM COOK'S ILLUSTRATED
5:00 PATI'S MEXICAN TABLE
5:30 SAMANTHA BROWN'S PLACES TO LOVE
6:00 PBS NEWS WEEKEND — Anchored by Geoff Bennett, the WETA production presents in-depth reporting of the day's national and international news.
6:30 WASHINGTON WEEK — R
7:00 FINDING YOUR ROOTS WITH HENRY LOUIS GATES, JR. — Encore episode: *Reporting on the Reporters*. R
8:00 ASIAN AMERICANS — A WETA co-production explores the impact of Asian Americans, the fastest-growing racial/ethnic group in the United States, on the country's past, present and future, told through individual lives and personal histories. *Part 1 of 5. Breaking Ground*. See how new immigrants from China, Japan and beyond, despite anti-Asian laws, build railroads, dazzle in Hollywood, and fight for equality. **Repeats midnight; Sun 5/8, 11pm**
9:00 ASIAN AMERICANS — *Part 2 of 5. A Question of Loyalty*. The first generation of U.S.-born Asian Americans have their loyalties tested during World War II. (*Series continues May 14.*) **Repeats 1am; Sun 5/8, midnight**
10:00 MR. TORNADO: AMERICAN EXPERIENCE — Meet pioneering meteorologist Ted Fujita, who transformed our understanding of tornados. His technological advancements saved lives and helped Americans prepare for and respond to dangerous weather phenomena. **Repeats 2am; Sun 5/8, 1am**
11:00 FINDING YOUR ROOTS WITH HENRY LOUIS GATES, JR. — Encore episode: *Reporting on the Reporters*. R

8 Sunday

- 6AM-10AM See the Sunday, May 1 listings.**
10AM-6PM DOWNTON ABBEY, SERIES 1 MARATHON — See how the phenomenon began! WETA presents the blockbuster *Masterpiece* drama's entire first season. Created by Oscar-winning writer Julian Fellowes (*Gosford Park*), the drama follows the lives of the noble Crawley family and the staff who serve them at their country house in Edwardian England. The production features an all-star cast including Hugh Bonneville, Dame Maggie Smith, Elizabeth McGovern, Michelle Dockery and Dan Stevens. As the story opens, when *Titanic* goes down, Lord Grantham loses his immediate heirs and his daughter Mary loses her fiancé, throwing the estate and its servants into turmoil. The new heir turns out to be Matthew, a lowly lawyer with novel ideas about country life.
6:00 PBS NEWS WEEKEND — Anchored by Geoff Bennett, the WETA production presents in-depth reporting of the day's national and international news. **Repeats Monday, 7am**
6:30 HISTORY WITH DAVID RUBENSTEIN, SEASON 3 — *Episode 5 of 10. Susan Eisenhower*. R
7:00 TELL ME MORE WITH KELLY CORRIGAN — In this WETA co-production, *New York Times* bestselling author Kelly Corrigan conducts interviews with influential people, exploring her guests' humanity and passions. *Encore episode: Dolores Huerta*.
7:30 SIGNATURE DISH — *Episode 5: West African Cuisine*. R
8:00 CALL THE MIDWIFE, SERIES 11 — *Part 8 of 8*. The aftermath of a tragic incident in the heart of Poplar ripples through the community. As Nonnatus House faces its darkest day, the team must overcome personal anguish to help the injured.
9:00 RIDLEY ROAD ON MASTERPIECE — *Part 2 of 4*. Now undercover, Vivien strives to convince neo-Nazi leader Colin Jordan that she is on his side. Her spying turns up an alarming development.
10:00 MY GRANDPARENTS' WAR — Follow leading actors as they re-trace the footsteps of their grandparents and learn how World War II changed the lives of their families and the world. *Part 2 of 4. Mark Rylance*. Follow actor Mark Rylance as he explores the story of his grandfather, who spent nearly four years as a prisoner of Japan during World War II — and examines his own beliefs about war and peace in the process.
11:00 ASIAN AMERICANS — *Parts 1 & 2 of 5*. R (2 hrs.)

9 Monday

- 7:00 PBS NEWSHOUR** — Weeknights. Visit pbs.org/newshour. **Repeats next day, 7am**
8:00 ANTIQUES ROADSHOW: COLONIAL WILLIAMSBURG, HOUR 1 — Journey back in time via historical appraisals at Colonial Williamsburg.
9:00 SIGNATURE DISH — A WETA production hosted by Seth Tillman spotlights standout dishes at restaurants around the national capital area. **Encore: Episode 2: Southeast Asian Specialties**. Seth tastes three dishes that represent new trends in Southeast Asian food: *ohno khauk swe* [coconut curry chicken noodle soup] at *Thamee* in Northeast DC; lechon belly at *Kuya Ja's*



May 10 & 27 at 10:30 p.m. on WETA PBS & WETA Metro
Beyond the Canvas, featuring the best arts and culture reporting from *PBS NewsHour's* "Canvas" arts series, presents new Season 3 episodes. Senior national correspondent Amna Nawaz hosts.

Lechon Belly in Kensington, MD; and fish head curry at **Malaysian Kopitiam** in Centreville, VA.

9:30 WETA ARTS — May marks the 100th anniversary of the dedication of the Lincoln Memorial. This month, *WETA Arts* host Felicia Curry and Mike Litterst, chief of communications for the National Mall, explore the surprising history of the iconic structure. Plus, a new chamber opera, *Unknown*, commemorates the 100th anniversary of the dedication of the Tomb of the Unknown Soldier at Arlington National Cemetery. **Repeats Mon 5/23, 9:30pm; Sun 5/29, 1:30pm; Mon 5/30, 10:30pm**

10:00 INDEPENDENT LENS: WHEN CLAUDE GOT SHOT — After being shot in the face by 15-year-old Nathan King, Claude's path to recovery leads to forgiveness. But that path is paved with the complexities of race, violence and justice. (90 min.)

10 Tuesday

8:00 FINDING YOUR ROOTS WITH HENRY LOUIS GATES, JR.

— In this WETA co-production, join Harvard scholar Henry Louis Gates, Jr., as he delves into the genealogy of famous Americans. Encore episode: *No Laughing Matter*. Gates shows comedians Seth Meyers, Tig Notaro and Sarah Silverman that their family trees are filled with people whose struggles laid the groundwork for their success. Gates also reveals to each the news of an unexpected DNA cousin. **Repeats Sat 5/14, 7pm, 11pm**

9:00 WATERMAN – DUKE: AMBASSADOR OF ALOHA: AMERICAN MASTERS — Discover the inspiring story and considerable impact of five-time Olympic medalist Duke Kahanamoku. He shattered swimming records and globalized surfing while overcoming racism in a lifetime of personal challenges. Jason Momoa narrates.

10:30 BEYOND THE CANVAS, SERIES 3 — Enjoy the best arts and culture reporting from *PBS NewsHour's* "Canvas" arts series. *PBS NewsHour's* Amna Nawaz hosts. Season 3 showcases more of the nation's leading cultural creators — musicians, writers, actors, performers and others — who reveal how they turn their visions of the world into art. *Episode 1. Art, All Around Us*. In the spotlight are creators who are making art in the world around them.

11 Wednesday

8:00 NATURE: THE EGG: LIFE'S PERFECT INVENTION — The egg is perhaps nature's most perfect life-support system. Step by step as the egg hatches, host Sir David Attenborough reveals the wonder behind these incredible miracles of nature.

9:00 NOVA: DINOSAUR APOCALYPSE: THE NEW EVIDENCE — Sir David Attenborough explores how a North Dakota fossil dig could reveal clues to what happened when an asteroid struck Earth and wiped out the dinosaurs.

10:00 NOVA: DINOSAUR APOCALYPSE: THE LAST DAY — Sir David Attenborough explores fossils that could reveal the fate of animals on the day when an asteroid struck Earth and caused a mass extinction event.



Wednesday, May 11 at 8 p.m. on WETA PBS & WETA Metro
In *Nature: The Egg: Life's Perfect Invention*, Sir David Attenborough explores the wonder of the egg — from creation to hatching. Then stay tuned as the naturalist hosts *NOVA: Dinosaur Apocalypse*.



Tuesday, May 10 at 9 p.m. on WETA PBS & WETA Metro

Waterman – Duke: Ambassador of Aloha: American Masters explores the life and legacy of surfing legend, racial pioneer and Olympic swimming champion Duke Kahanamoku, a Native Hawaiian.

12 Thursday

8:00 MIDSOMER MURDERS, SERIES 20 — DCI John Barnaby and his junior partner DS Jamie Winter investigate murders in the English countryside. *Episode 11 of 12. Send in the Clowns. Pt 1*. Ferabbee's Circus comes to town, bringing sinister clown sightings, threatening notes and deathly dangerous circus acts.

9:00 COBRA, SERIES 1 — A reprised 2020 suspense-drama follows the British Prime Minister and his Cabinet Office Briefing Room "A" (COBRA) committee, comprised of leading contingency planners and senior politicians, as they navigate a major national crisis. Robert Carlyle (*Trainspotting*, *The Full Monty*) stars. *Part 1 of 6*. As a major crisis threatens the stability of the United Kingdom, Prime Minister Robert Sutherland assembles an emergency team to contend with the situation.

10:00 THE FALL, SERIES 2 — *Part 3 of 6. Beauty Hath Strange Power*: Gibson orders extensive surveillance on Spector's family, believing they will lead her to Paul, but despite the police operation his whereabouts remain unknown. As the search for Rose Stagg becomes more desperate, a near miss between Spector and Gibson makes their cat-and-mouse hunt personal.

13 Friday

8:00 WASHINGTON WEEK — **Repeats Sat 5/14, 6am, 6:30pm; Mon 5/16, 7:30am**

8:30 HISTORY WITH DAVID RUBENSTEIN, SEASON 3 — *Episode 6 of 10. David Reynolds*. **Repeats Sun 5/15, 6:30pm**

9:00 GREAT PERFORMANCES: ANYTHING GOES — Enjoy this London production of Cole Porter's classic musical led by Sutton Foster, who reprises her Tony-winning role as Reno Sweeney, and directed by Kathleen Marshall. Popular songs include "I Get a Kick Out of You" and "You're the Top." (2.5 hrs.)

14 Saturday

6AM-6PM See the Saturday, May 7 listings.

6:00 PBS NEWS WEEKEND — Geoff Bennett anchors.

6:30 WASHINGTON WEEK — R

7:00 FINDING YOUR ROOTS WITH HENRY LOUIS GATES, JR. — Encore episode: *No Laughing Matter*. **Repeats 11pm**

8:00 ASIAN AMERICANS — The WETA co-production continues, exploring the impact of Asian Americans on the country's past, present and future, told through individual lives and personal histories. *Part 3 of 5. Good Americans*. Learn how Asian Americans are targeted as perpetual foreigners during the Cold War. **Repeats midnight; Sun 5/15, 11pm**

9:00 ASIAN AMERICANS — *Part 4 of 5. Generation Rising*. A younger generation fights for equality in the fields, on campuses and in the culture, and new immigrants and war refugees expand the definition of Asian American. **Repeats 1am; Sun 5/15, midnight**

COURTESY THE PARAGON AGENCY



LIONEL RICHIE: THE LIBRARY OF CONGRESS GERSHWIN PRIZE FOR POPULAR SONG A WETA CO-PRODUCTION

Tuesday, May 17 at 9 p.m. on WETA PBS & WETA Metro

The WETA co-production *Lionel Richie: The Library of Congress Gershwin Prize for Popular Song* presents a special March DAR Constitution Hall concert celebrating the artistry of the pop icon.

- 10:00 ASIAN AMERICANS** — Part 5 of 5. *Breaking Through*. Revisit the turn of the millennium, when Asian Americans are empowered by growing numbers and rising influence but face a reckoning of what it means to be an American in an increasingly polarized society. **Repeats 2am; Sun 5/15, 1am**
- 11:00 FINDING YOUR ROOTS WITH HENRY LOUIS GATES, JR.** — Encore episode: *No Laughing Matter*. **R**

15 Sunday

6AM-12N See the Sunday, May 1 listings.

- 12N THE STORY OF CHINA** — Historian Michael Wood hosts. Part 2 of 3. *Golden Age/The Ming*. Learn of the stunning achievements of two of China's most brilliant dynasties: the Song, creators of a Chinese Renaissance, and the Ming, builders of the Great Wall and the Forbidden City. **Repeats Fri 5/13, 3pm**
- 2:00 THE STORY OF CHINA** — Historian Michael Wood hosts. Part 3 of 3. *The Last Empire/The Age of Revolution*. Wood spotlights the splendor of the last Chinese dynasty, the Qing. Learn about the fateful First Opium War, which sparked the fall of the empire, and, after the 20th-century revolutions, the birth of today's China. **Repeats Fri 5/20, 3pm**
- 4:00 PACIFIC HEARTBEAT, SERIES 11: HIGH TIDE, DON'T HIDE** — In the film anthology series' new offering, New Zealand teenagers join the global School Strike for Climate and find that activism, authority and awareness make for a steep learning curve. Planning a movement and building momentum are the easy parts as they face political indifference, their own white privilege, and the ongoing struggle to be heard. Meanwhile, the tides continue to rise.
- 5:00 THE CHAVIS CHRONICLES**
- 5:30 A SEAT AT THE TABLE**
- 6:00 PBS NEWS WEEKEND** — Geoff Bennett anchors. **Repeats Monday, 7am**
- 6:30 HISTORY WITH DAVID RUBENSTEIN, SEASON 3** — Episode 6 of 10. David Reynolds. **R**
- 7:00 TELL ME MORE WITH KELLY CORRIGAN, SERIES 3** — In a new season of this WETA co-production, *New York Times* bestselling author Kelly Corrigan conducts more interviews with influential people, exploring her guests' humanity and passions. Episode 5 of 10. Kevin Young, *Poet and Museum Curator*. Plus Season 2 encore: *Melinda French Gates*.
- 8:00 LUCY WORSLEY INVESTIGATES** — Historian Lucy Worsley reinvestigates some of the most dramatic chapters in British history. She uncovers forgotten witnesses, re-examines old evidence and follows new clues. Episode 1 of 4. *Princes in the Tower*. What really happened to the Princes in the Tower? Worsley uncovers the story of the two boys whose disappearance in 1483 has led to centuries of mystery and speculation.
- 9:00 RIDLEY ROAD ON MASTERPIECE** — Part 3 of 4. Vivien's link to Jordan is complicated by the arrival of his wife.

The police rebuff warnings from the 62 Group, which must act on its own.

- 10:00 MY GRANDPARENTS' WAR** — Follow leading actors as they re-trace the footsteps of their grandparents and learn how World War II changed the lives of their families and the world. Part 3 of 4. Kristin Scott Thomas. Join the actor as she pieces together a lost chapter of her family history, learning how her grandfather, a Royal Navy officer, saved thousands at Dunkirk and survived some of World War II's most devastating battles.
- 11:00 ASIAN AMERICANS** — Parts 3-5 of 5. **R** (3 hrs.)

16 Monday

- 7:00 PBS NEWSHOUR** — Weeknights. Visit pbs.org/newshour. **Repeats next day, 7am**
- 8:00 ANTIQUES ROADSHOW: COLONIAL WILLIAMSBURG, HOUR 2** — Discover more standout treasures from *Antiques Roadshow's* visit to Colonial Williamsburg.
- 9:00 SIGNATURE DISH** — A WETA production hosted by Seth Tillman spotlights standout dishes at restaurants around the national capital area. **Encore: Episode 3: Caribbean Favorites**. The flavors of Puerto Rico, Jamaica, and Trinidad and Tobago are on the menu in several DC establishments. Signature dishes: Jamaican *jerk chicken wings* at **Andrene's Caribbean & Soul Food** in Brightwood; *chuleta kan kan*, a fried pork chop at **La Famosa** in the Navy Yard; and *curried beef roti* at **Cane** on H Street, NE.
- 9:30 SIGNATURE DISH** — **Encore: Episode 4: Masters of Spice**. Host Seth Tillman meets three chefs who excel at balancing intense heat with incredible flavors. Signature dishes: *muu som*, a stir-fried rice-fermented sour pork dish at **Thip Khao** in Columbia Heights, DC; *jungle laal maas*, a spicy goat curry at **Pappe** in Logan Circle; and a whole steamed fish with fermented peppers and scallions at **Q by Peter Chang** in Bethesda, MD.
- 10:00 INDEPENDENT LENS: SCENES FROM THE GLITTERING WORLD** — Following three Indigenous students, this film presents a meditation on adolescence, trauma, and the power of connecting with an isolated Navajo homeland.

17 Tuesday

- 8:00 FINDING YOUR ROOTS WITH HENRY LOUIS GATES, JR.** — In this WETA co-production, join Harvard scholar Henry Louis Gates, Jr., as he delves into the genealogy of famous Americans. Encore episode: *Freedom Tales*. Gates delves deep into the roots of two African American guests, actor S. Epatha Merkerson and athlete and television personality Michael Strahan. Both discover unexpected stories that challenge assumptions about Black history. **Repeats Sat 5/21, 7pm, 11pm**
- 9:00 LIONEL RICHIE: THE LIBRARY OF CONGRESS GERSHWIN PRIZE FOR POPULAR SONG** — In this WETA co-production, the Library of Congress bestows its Gershwin Prize for Popular Song on iconic singer-songwriter Lionel Richie, as he receives the distinguished honor and participates in a concert featuring contemporary artists performing his top hits. The program was recorded at DAR Constitution Hall on March 9. See page 3 for details. **Repeats Sun 5/22, 4pm**



SCA/BBH

Wednesday, May 18 at 9 p.m. on WETA PBS & WETA Metro

NOVA: Why Ships Crash spotlights the grounding of the colossal *Ever Given* container ship on the bank of the Suez Canal in 2021. How could a single ship cause a major global supply-chain crisis?



Friday, May 20 at 9 p.m. on WETA PBS & WETA Metro

Great Performances: Merry Wives presents Shakespeare's comedic masterpiece from the Public Theater's Shakespeare in the Park, set in South Harlem. Above: Pascale Armand and Susan Kelechi Watson.

- 10:00 TYRUS WONG: AMERICAN MASTERS** — Discover the art, life and enduring impact of Tyrus Wong, the renowned Chinese-American painter behind *Bambi* and *Rebel Without a Cause*, via new and never-before-seen interviews, movie clips and art. Wong once exhibited with Picasso and Matisse. (90 min.)

18 Wednesday

- 8:00 NATURE: BIG BEND: THE WILD FRONTIER OF TEXAS** — Roam the Wild West frontier land of the Rio Grande's Big Bend alongside its iconic animals, including black bears, rattlesnakes and scorpions.
- 9:00 NOVA: WHY SHIPS CRASH** — When the colossal *Ever Given* container ship crashed into the bank of the Suez Canal in March 2021, international supply chains ground to a halt. How could such a disaster happen? And can the investigation help prevent future accidents?
- 10:00 COLOMBIA: WILD AND FREE** — Explore the magnificent flora and fauna of Colombia, from Andean volcanoes to the Amazon rainforest. *Episode 1 of 2. Two Rivers*. Learn about the eastern region of Colombia, a land defined by two powerful rivers: the Orinoco and the Amazon. Along the way, meet amazing wildlife, including jaguars, capybaras, anacondas, and pygmy marmosets, the world's smallest monkeys.

19 Thursday

- 8:00 MIDSOMER MURDERS, SERIES 20** — DCI John Barnaby and his junior partner DS Jamie Winter investigate murders in the English countryside. *Episode 12 of 12. Send in the Clowns. Pt 2*. Barnaby must face his own fears as he probes a murder after Ferabbee's Circus comes to town.
- 9:00 COBRA, SERIES 1** — The suspense-drama continues. *Part 2 of 6*. With the nation experiencing one of the worst crises in its history, the Prime Minister and his team work around the clock. Anna reconnects with a face from her past.
- 10:00 THE FALL, SERIES 2** — *Part 4 of 6. The Mind is its Own Place*. As Gibson reports to Burns that their confrontation in her hotel room may have been witnessed by Paul Spector, she is also shocked to discover that he has been visiting one of his surviving victims in hospital. Seizing on the opportunity, Gibson locates Spector and puts him under surveillance. However when a body is discovered, Gibson must face her worst fears.

20 Friday

- 8:00 WASHINGTON WEEK** — Repeats Sat 5/21, 6am, 6:30pm; Mon 5/23, 7:30am
- 8:30 HISTORY WITH DAVID RUBENSTEIN, SEASON 3** — *Episode 7 of 10. Joseph Ellis. Repeats Sun 5/22, 6:30pm*
- 9:00 GREAT PERFORMANCES: MERRY WIVES** — Experience Shakespeare's comedic masterpiece from the Public Theater's Shakespeare in the Park. Set in South Harlem, the play tells the story of the trickster Falstaff, and the wily wives who outwit him, in a celebration of Black joy, laughter and vitality. (2 hrs.) **Repeats Sun 5/22, noon**

21 Saturday

6AM-6PM See the Saturday, May 7 listings.

- 6:00 PBS NEWS WEEKEND** — Geoff Bennett anchors.
- 6:30 WASHINGTON WEEK** — R
- 7:00 FINDING YOUR ROOTS WITH HENRY LOUIS GATES, JR.** — Encore episode: *Freedom Tales*. **Repeats 11pm**
- 8:00 AMY TAN: UNINTENDED MEMOIR: AMERICAN MASTERS** — Explore the life of the author of "The Joy Luck Club" in this intimate portrait, a vivid, colorful journey through Tan's inspiring personal story and career. **Repeats midnight; Sun 5/22, 11pm**
- 10:00 THE REGISTRY** — Learn the history of the U.S. Army's Military Intelligence Service (MIS) during World War II. The film profiles Americans of Japanese descent who served in this secret U.S. Army unit that fought in the Pacific. Aging veterans try to preserve their stories by creating a registry of those who served. **Repeats 2am; Sun 5/22, 1am**
- 11:00 FINDING YOUR ROOTS WITH HENRY LOUIS GATES, JR.** — Encore episode: *Freedom Tales*. R

22 Sunday

6AM-12N See the Sunday, May 1 listings.

- 12N GREAT PERFORMANCES: MERRY WIVES** — R
- 2:00 PACIFIC HEARTBEAT, SERIES 11: JAMES & ISEY** — Genuine New Zealand treasures Isey and her son James invite viewers into their lives in the week leading up to Isey's 100th birthday, and its shaping up to be quite a party. The episode captures a Northland celebration of life and love like no other.
- 3:00 PACIFIC HEARTBEAT, SERIES 11: LOIMATA, THE SWEETEST TEARS** — Featuring the redemptive tale of *waka* builder and captain Lilo Ema Siopoe's final years, this film is a chronicle of journeys — of migration, spirituality, voyaging, healing and coming home. Confronting intergenerational trauma head-on, the Siopoe family returns to their homeland of Sâmoa.
- 4:00 LIONEL RICHIE: THE LIBRARY OF CONGRESS GERSHWIN PRIZE FOR POPULAR SONG** — R
- 5:00 THE CHAVIS CHRONICLES**
- 5:30 A SEAT AT THE TABLE**
- 6:00 PBS NEWS WEEKEND** — Geoff Bennett anchors. **Repeats Monday, 7am**
- 6:30 HISTORY WITH DAVID RUBENSTEIN, SEASON 3** — *Episode 7 of 10. Joseph Ellis*. R
- 7:00 TELL ME MORE WITH KELLY CORRIGAN, SERIES 3** — In a new season of this WETA co-production, *New York Times* bestselling author Kelly Corrigan conducts more interviews with influential people, exploring her guests' humanity and passions. *Episode 6 of 10. Samantha Power, Diplomat*. Plus Season 2 encore: *W. Kamau Bell*.
- 8:00 LUCY WORSLEY INVESTIGATES** — Historian Lucy Worsley probes some of the most dramatic chapters in British history. *Episode 2 of 4. Madness of King George*. How did George III's mental illness change Britain? Lucy Worsley uncovers royal papers and explores how the assassination attempt on his life changed psychiatry forever.
- 9:00 RIDLEY ROAD ON MASTERPIECE** — *Part 4 of 4*. As Vivien's deception starts to crumble, she races to secure incriminating evidence against Jordan. Meanwhile, Jack faces mortal danger.
- 10:00 MY GRANDPARENTS' WAR** — Follow leading actors as they re-trace the footsteps of their grandparents and learn how World War II changed the lives of their families and the world. *Part 4 of 4. Carey Mulligan*. Follow the actor as she travels to Japan to learn about her grandfather's experience as a British naval officer during World War II, including the Kamikaze attack he survived, and the devastation he witnessed.
- 11:00 AMY TAN: UNINTENDED MEMOIR: AMERICAN MASTERS** — R

23 Monday

- 7:00 PBS NEWSHOUR** — Weeknights. Visit pbs.org/newshour. **Repeats next day, 7am**
- 8:00 ANTIQUES ROADSHOW: COLONIAL WILLIAMSBURG, HOUR 3** — View more appraisals at Colonial Williamsburg during *Roadshow's* third hour in Virginia.
- 9:00 SIGNATURE DISH** — A WETA production hosted by Seth Tillman showcases standout dishes at restaurants around the national capital area. **Episode 5: West African Cuisine**. See the Monday, May 2, 9 p.m. listing. R

9:30 WETA ARTS — See the Monday, May 9, 9:30 p.m. listing. **R**

10:00 INDEPENDENT LENS: ONE CHILD NATION — China's one-child policy forever changed the lives of mothers and children. Inspired by the birth of her first child, filmmaker Nanfu Wang returns to China to speak with her mother and explore the ripple effect of this social experiment. (90 min.)

24 Tuesday

8:00 FINDING YOUR ROOTS WITH HENRY LOUIS GATES, JR.

— In this WETA co-production, join Harvard scholar Henry Louis Gates, Jr., as he delves into the genealogy of famous Americans. Encore episode: *Breaking the Silences*. Gates explores the family secrets of journalist Gayle King, director Jordan Peele and comedian Issa Rae, introducing them to ancestors who are both Black and white and raising profound questions about their family trees. **Repeats Sat 5/28, 7pm, 11pm**

9:00 PLAGUE AT THE GOLDEN GATE: AMERICAN EXPERIENCE — In her solo directorial debut, Li-Shin Yu (*The Chinese Exclusion Act*, with Ric Burns) spotlights turn-of-the 20th-century San Francisco, when a deadly outbreak of bubonic plague in the city's Chinatown, and the hunt to identify its source, led to an all-too-familiar spate of violent anti-Asian sentiment. The film is based on David K. Randall's book "Black Death at the Golden Gate: The Race to Save America from the Bubonic Plague". **Repeats Sun 5/29, 2pm**

25 Wednesday

8:00 NATURE: EQUUS: STORY OF THE HORSE: ORIGINS — Travel around the world with anthropologist Niobe Thompson to uncover the history of humankind's relationship with the horse. Discover the habits and biology of these majestic animals and ride along with the world's last nomadic tribes.

9:00 NOVA: ICE AGE FOOTPRINTS — Thousands of prehistoric footprints in New Mexico's White Sands National Park capture moments when Ice Age humans crossed paths with enormous ground sloths and mammoths. What can this evidence reveal about the peopling of the Americas?

10:00 COLOMBIA: WILD AND FREE — Explore the magnificent flora and fauna of Colombia, from Andean volcanoes to the Amazon rainforest. *Episode 2 of 2. From the Pacific to the Andes*. Journey to the largely uninhabited Pacific coast of Colombia, where humpback whales give birth and fish hunt crabs in the mangrove forests. Then ascend to snow-capped Andean volcanoes, home to spectacled bears, condors and hummingbirds.

26 Thursday

8:00 MIDSOMER MURDERS, SERIES 16 — Work never slows down for DCI John Barnaby, as he investigates the grisly murders that plague a picturesque English county. In this season, Barnaby partners with a new assistant, DS Charlie Nelson. *The Christmas Haunting, Pt 1 of 2*. Barnaby visits the village of Morton Shallows to investigate the stabbing death of a visitor during a ghost-hunting party at the local Manor House.

9:00 COBRA, SERIES 1 — *Part 3 of 6*. As the country continues to face dark days, the Prime Minister, Anna, Fraser and their teams pay a visit to the worst-affected area. Archie's rhetoric threatens to cause more problems for everyone.

10:00 THE FALL, SERIES 2 — *Part 5 of 6. The Perilous Edge of Battle*. With the suspect Spector under surveillance, Gibson seeks to ensure that a solid arrest strategy is in place. However, Spector is unpredictable, and Gibson is forced to act quickly as her carefully made plans crumble.



COURTESY AMERICAN PUBLIC TELEVISION

Saturday, May 28 at 8 p.m. on WETA PBS

Betrayed: Surviving an American Concentration Camp tells the story of a group of Japanese Americans and their incarceration by the U.S. government during World War II. It also explores the effects of this incarceration and the intergenerational trauma that resulted.

27 Friday

8:00 WASHINGTON WEEK — **Repeats Sat 5/28, 6am, 6:30pm; Mon 5/30, 7:30am**

8:30 HISTORY WITH DAVID RUBENSTEIN, SEASON 3 — *Episode 8 of 10. Erica Armstrong Dunbar*. **Repeats Sun 5/29, 6:30pm**

9:00 GREAT PERFORMANCES: KEEPING COMPANY WITH SONDHEIM — Take an inside look at the reimagined gender-swapped production as it returns to Broadway during the COVID-19 pandemic. The program includes new interviews with Tony- and Grammy-winning cast members Katrina Lenk, Patti LuPone and others. **Repeats Sun 5/29, noon**

10:30 BEYOND THE CANVAS, SERIES 3 — Enjoy the best arts and culture reporting from *PBS NewsHour*'s "Canvas" arts series. *PBS NewsHour*'s Amna Nawaz hosts. Season 3 showcases more of the nation's leading cultural creators — musicians, writers, actors, performers and others — who reveal how they turn their visions of the world into art. *Episode 2. Art, Innovated*. This episode celebrates artists pushing the boundaries of their mediums.

28 Saturday

6AM-6PM See the Saturday, May 7 listings.

6:00 PBS NEWS WEEKEND — Geoff Bennett anchors.

6:30 WASHINGTON WEEK — **R**

7:00 FINDING YOUR ROOTS WITH HENRY LOUIS GATES, JR. — Encore episode: *Breaking the Silences*. **R**

8:00 BETRAYED: SURVIVING AN AMERICAN CONCENTRATION CAMP — Learn the story of a group of Japanese Americans and their imprisonment by the U.S. government during World War II. Explore the long-term effects of this incarceration and intergenerational trauma. More than 40 camp survivors and descendants tell the story. **Repeats midnight; Sun 5/29, 11pm**

9:00 NORMAN MINETA AND HIS LEGACY: AN AMERICAN STORY — Meet the statesman who served as cabinet secretary for presidents Clinton and George W. Bush. Imprisoned by the U.S. during World War II for his Japanese ancestry, Mineta rose to become the first Asian American to serve in a presidential cabinet. **Repeats 1am; Sun 5/29, 4pm, midnight**

10:00 PACIFIC HEARTBEAT, SERIES 11: THE HEALER STONES OF KAPA MAHU — On Honolulu's famous Waikiki Beach stand four large stones that represent a Hawaiian tradition of healing and gender diversity that is all but

WETA Magazine is published monthly by the Greater Washington Educational Telecommunications Association for its members. Three dollars of each member's dues are designated for its subscription. WETA occasionally exchanges member names with other organizations. If you wish that your name not be exchanged, please call Audience Services at 703-998-2724. ©2022 by Greater Washington Educational Telecommunications Association. All rights reserved. No part of this magazine may be reproduced in any form without written permission. Periodical postage paid at Arlington, VA 22210 and additional offices. Send address changes to WETA, 3939 Campbell Avenue, Arlington, Virginia 22206. Volume 35, Number 5. ISSN No. 1041-2700.

PRINTED ON RECYCLED PAPER



Publisher Mary Stewart
Editor Jeff Giese
Design MANIFEST LLC

Editorial and Advertising Offices
3939 Campbell Ave.
Arlington, VA 22206

unknown to passersby. According to legend, the stones are a tribute to four *mahu* — people of dual male and female spirit — who brought the healing arts from Tahiti to Hawaii and used their spiritual power to cure disease.

11:00 FINDING YOUR ROOTS WITH HENRY LOUIS GATES, JR. — Encore episode: *Breaking the Silences*. **R**

29 Sunday

6AM-12N See the Sunday, May 1 listings.

12N GREAT PERFORMANCES: KEEPING COMPANY WITH SONDHEIM — **R**

1:30 WETA ARTS — **R**

2:00 PLAGUE AT THE GOLDEN GATE: AMERICAN EXPERIENCE — **R**

4:00 NORMAN MINETA AND HIS LEGACY: AN AMERICAN STORY — **R**

5:00 THE CHAVIS CHRONICLES

5:30 A SEAT AT THE TABLE

6:00 PBS NEWS WEEKEND — Geoff Bennett anchors.

Repeats Monday, 7am

6:30 HISTORY WITH DAVID RUBENSTEIN, SEASON 3 —

Episode 8 of 10. Erica Armstrong Dunbar. R

7:00 TELL ME MORE WITH KELLY CORRIGAN, SERIES 3 — In a new season of this WETA co-production, *New York Times* bestselling author Kelly Corrigan conducts more interviews with influential people, exploring her guests' humanity and passions. *Episode 7 of 10. Robin Roberts, Broadcast Journalist*. Plus Season 2 encore: *Bianca Valenti*.

8:00 NATIONAL MEMORIAL DAY CONCERT 2022 — In this WETA co-production, tune in to the annual broadcast of America's national night of remembrance. The event honors the military service of our men and women in uniform, their families and those who have made the ultimate sacrifice for our country. See the inside front cover for details. *Repeats tonight; Mon 5/30, 9pm*

9:30 NATIONAL MEMORIAL DAY CONCERT 2022 — (encore)

11:00 BETRAYED: SURVIVING AN AMERICAN CONCENTRATION CAMP — **R**

12M NORMAN MINETA AND HIS LEGACY: AN AMERICAN STORY — **R**

30 Monday

7:00 PBS NEWSHOUR — Weeknights. Visit pbs.org/newshour. *Repeats next day, 7am*

8:00 LAST BATTLE: THE FIGHT FOR AMERICA'S WORLD WAR I MEMORIAL — Conceived and constructed 100 years after the conflict, America's new national World War I Memorial is a triumph of inspired collaboration during a fractious time in our history. Told through the words of those who made "the impossible plausible," the film spotlights a diverse coalition that delivered an impressive achievement. Participants include former Secretary of Defense Leon Panetta; former Chairman of the Joint Chiefs of Staff Admiral Michael G. Mullen, USN (Ret.); General Barry R. McCaffrey, USA (Ret.); former U.S. Senator and Ambassador Carol Moseley Braun; and former U.S. Senator and Secretary of the Navy John Warner III.

9:00 NATIONAL MEMORIAL DAY CONCERT 2022 — **R**

10:30 WETA ARTS — **R**

31 Tuesday

8:00 FINDING YOUR ROOTS WITH HENRY LOUIS GATES, JR.

— In this WETA co-production, join Harvard scholar Henry Louis Gates, Jr., as he delves into the genealogy of famous Americans. Encore episode: *Dreaming of a New Land*. Gates explores with Marisa Tomei, Sheryl Sandberg and Kal Penn the tremendous challenges faced by their immigrant forebears. From Italy, Russia and India to America, their histories show that success could take generations to achieve.

9:00 RISING AGAINST ASIAN HATE: ONE DAY IN MARCH — Following the aftermath of the March 2021 mass shootings at three spas in Atlanta, this film chronicles how the Asian American community came together to fight back against hate — and also explores the struggles and triumphs of AAPI communities.

10:00 FRONTLINE: POLICE ON TRIAL — With Pulitzer Prize-winning reporters from the Star Tribune, *Frontline* investigates the Minneapolis police in the aftermath of the murder of George Floyd — from the killing and protests to the trial of Derek Chauvin. (90 min)

Via Antenna 26.3
Comcast 266/1147
Cox 801
Fios 472
RCN 38

WETA



The WETA PBS Kids channel offers a safe haven for young viewers, presenting educational programming 24 hours each day, seven days a week.

WEEKDAYS ON WETA PBS KIDS

- Ready Jet Go!, 6:30am
- Peg + Cat, 7am
- Super WHY!, 7:30am
- Daniel Tiger's Neighborhood, 8am, 8:30am
- Sesame Street, 9am
- Elinor Wonders Why, 9:30am
- Clifford the Big Red Dog, 10am
- Dinosaur Train, 10:30am
- Let's Go Luna!, 11am
- Curious George, 11:30am
- Nature Cat, 12pm
- Xavier Riddle and the Secret Museum, 12:30pm
- Molly of Denali, 1pm
- Hero Elementary, 1:30pm
- Cyberchase, 2pm
- Pinkalicious & Peterrific, 2:30pm, 3pm
- Elinor Wonders Why, 3:30pm
- Donkey Hodie, 4pm
- Curious George, 4:30pm
- Alma's Way, 5pm (New episodes May 2-5!)
- Xavier Riddle and the Secret Museum, 5:30pm
- Molly of Denali, 6pm
- Hero Elementary, 6:30pm
- Wild Kratts, 7pm, 7:30pm
- Odd Squad, 8pm, 8:30pm
- Arthur, 9pm, 9:30pm
- Cyberchase, 10pm
- Pinkalicious & Peterrific, 10:30pm, 11pm
- Elinor Wonders Why, 11:30pm
- Donkey Hodie, 12am
- WETA PBS Kids Family Night airs Fridays, 7-10pm

Visit weta.org/schedule for complete WETA PBS Kids listings.

WEEKDAYS ON WETA PBS, 8 AM - 3 PM

- Hero Elementary, 8am
- Alma's Way, 8:30am
- Curious George, 9am
- Daniel Tiger's Neighborhood, 9:30am
- Donkey Hodie, 10am
- Elinor Wonders Why, 10:30am
- Sesame Street, 11am
- Pinkalicious & Peterrific, 11:30am
- Dinosaur Train, 12pm
- Clifford the Big Red Dog, 12:30pm
- Sesame Street, 1pm
- Donkey Hodie, 1:30pm
- Daniel Tiger's Neighborhood, 2pm
- Let's Go Luna!, 2:30pm





Via Antenna 26.2
Comcast 265, 1146
Cox 800
Fios 474
RCN 39, 602

British Television at Its Best

The WETA UK channel is devoted to the best in British television programming, presenting beloved classics and contemporary series around the clock, seven days a week. WETA UK offers a full schedule of fine entertainment programming — featuring drama, mystery and comedy — in addition to documentary series and news reports.

MAY P.M. PROGRAMMING ON WETA UK

VISIT WETA.ORG/SCHEDULE FOR A COMPLETE PROGRAM LINEUP

Sundays 5/15 & 5/22: WETA UK Top-20 Countdown!							Saturdays 5/14 & 5/21: WETA UK Top-20 Countdown!
SUNDAY		MONDAY	TUESDAY	WEDNESDAY	THURSDAY	FRIDAY	SATURDAY
12pm	• Escape to the Country, Series 2	Last of the Summer Wine	Last of the Summer Wine	Last of the Summer Wine	Last of the Summer Wine	Last of the Summer Wine	• Pie in the Sky, Series 2
12:30pm	• M. Berry's Country House Secrets (5/29)	As Time Goes By	As Time Goes By	As Time Goes By	As Time Goes By	As Time Goes By	• Hamish Macbeth (5/28)
1pm	• Escape to the Chateau, Series 5	A Place to Call Home	A Place to Call Home	A Place to Call Home	A Place to Call Home	A Place to Call Home	The Indian Doctor
1:30pm	• Mary's Country House Secrets (5/29)						
2pm	Lucy Worsley's Royal Myths & Secrets (5/1); Forgotten Slave Owners (5/8); M. Berry's Country House Secrets (5/29)	• Escape to the Country, Series 2	• Pie in the Sky, Series 2	Foyle's War, Series 4	Midsomer Murders, Series 19 & 20	McLeod's Daughters, Series 2	Death in Paradise, Series 11
2:30pm		• Mary Berry's Country House Secrets (starts 5/16)	• Hamish Macbeth (starts 5/10, exc 5/31)				
3pm	Mary Berry's Country House Secrets	• Escape to the Chateau, Series 5	All Creatures Great and Small, Series 7 (original series; two episodes) (three episodes on 5/31, 2-5pm)	• 3pm: Midsomer Murders, Series 19	Death in Paradise, Series 11	The Indian Doctor, Series 2 & 3	McLeod's Daughters, Series 2
3:30pm		• Mary Berry (starts 5/9)		• 4pm: Around the World in 80 Days			
4pm	Call the Midwife, Series 8	• Scotland's Rail (5/30)		• 4pm: Secrets of Royal Travel (5/18)	Vienna Blood, Series 2	Shakespeare & Hathaway, Series 2 & 3	Foyle's War
4:30pm		• Forgotten Slave Owners (5/2, 5/9)		• 4pm: Mary Berry's Simple Comforts (starts 5/25)			
5pm	Frankie Drake Mysteries	• Mary Berry's Simple Comforts/Favorites (starts 5/16)					
5:30pm		BBC World News Outside Source	BBC World News Outside Source	BBC World News Outside Source	BBC World News Outside Source	BBC World News Today	• Around the World in 80 Days on Masterpiece
		BBC World News America	BBC World News America	BBC World News America	BBC World News America	BBC World News America	• Upstairs, Downstairs (5/28)
6pm	• Sanditon, Series 2 on Masterpiece	'Allo, 'Allo!	'Allo, 'Allo!	'Allo, 'Allo!	'Allo, 'Allo!	'Allo, 'Allo!	• Sanditon, Series 2 on Masterpiece
6:30pm	• Aristocrats (starts 5/29)	(Still) Open All Hours	(Still) Open All Hours	(Still) Open All Hours	(Still) Open All Hours	(Still) Open All Hours	• The Aristocrats (5/28)
7pm	• The Queen's Garden (5/1)	Last of the Summer Wine	Last of the Summer Wine	Last of the Summer Wine	Last of the Summer Wine	Last of the Summer Wine	• Secrets of Royal Travel (5/7)
7:30pm	• Secrets of Royal Travels (5/8, 5/29)	As Time Goes By	As Time Goes By	As Time Goes By	As Time Goes By	As Time Goes By	• Mary Berry's Country House Secrets (5/28)
8pm	Escape to the Country, Series 2	• Pie in the Sky, Series 2 (5/2)	Foreign Favourites	Midsomer Murders , Series 19 (Series 20 starts 5/25)	McLeod's Daughters, Series 2	Masterworks Showcase	• Secrets of the Royal Palaces (5/7)
8:30pm		• Hamish Macbeth (starts 5/9)	• 8pm: Professor T, Series 3			• 8pm: Foyle's War, Series 4 (Series 5 starts 5/27)	• The Hour (starts 5/28)
9pm	• Escape to the Chateau, Series 5 (5/1)	All Creatures Great and Small, Series 7 (original series; two episodes) (three episodes on 5/30)	• 9pm: Seaside Hotel, Series 3	Death in Paradise, Series 11	The Indian Doctor, Series 2 (Series 3 starts 5/19)	• 9pm: Around the World in 80 Days on Masterpiece	Frankie Drake Mysteries, Series 3
9:30pm	• Mary Berry's Absolute Favorites (starts 5/8)		• 9pm: The Hunter (starts 5/17)			• 9pm: Upstairs, Downstairs (starts 5/13)	
10pm	• Forgotten Slave Owners (5/1, 5/8)		• 10pm: Luna & Sophie, Series 1 (5/3, 5/10)	Vienna Blood, Series 2	Shakespeare & Hathaway, Series 2 (Series 3 starts 5/26)	• 10pm: Sanditon, Series 2 on Masterpiece	The Coroner, Series 1
10:30pm	• Scotland's Scenic Railways, Series 2 (starts 5/29)		• 10pm: Before We Die, Series 2 (starts 5/17)			• 10pm: Aristocrats (starts 5/20)	
11pm	Yes Minister (2 eps)	BBC World News (12m on 5/30)	BBC World News	BBC World News	BBC World News	BBC World News	• Secrets of Royal Travel (5/7)
11:30pm		• Pie in the Sky, Ser. 2 (5/2)	Professor T, Series 3	Midsomer Murders, Series 19 & 20	McLeod's Daughters, Series 2	Foyle's War, Series 4 & 5	• M. Berry's Country House Secrets (5/28)
		• Hamish Macbeth (starts 5/9)					
SUNDAY		MONDAY	TUESDAY	WEDNESDAY	THURSDAY	FRIDAY	SATURDAY

WETA UK Highlights

Upstairs Downstairs

Fridays at 9 p.m. starting May 13 on WETA UK

A much-loved former public television series was brought back to life in 2010 with a fresh cast, including Eileen Atkins, Keeley Hawes (right), Ed Stoppard, Claire Foy, Jean Marsh, Anne Reid and Art Malik. In the series, it is 1936, six years since parlor maid Rose left 165 Eaton Place. Fate brings her back as housekeeper to its new owners: Sir Hallam; his wife Lady Agnes; and Lady Holland, his mother. Rose must recruit a new “downstairs” staff to help run the “upstairs” world, but in both there is a labyrinth of secrets, lies and scandal. The drama, written by Heidi Thomas (*Call the Midwife*, *Cranford*), is set against the backdrop of a Britain with a new king, and sexual, social and political tensions.



The Hour

Saturdays at 8 p.m. starting May 28 on WETA UK

A six-part drama set in 1956 spotlights a new current-affairs television program, *The Hour*, being launched by BBC at the time of the Suez Crisis and the Hungarian Revolution. The leads are Ben Whishaw, Romola Garai and Dominic West, with a supporting cast that includes Tim Pigott-Smith, Juliet Stevenson, Anton Lesser and Anna Chancellor. In the story, young television journalists Freddie and Bel yearn for bigger, bolder stories to spotlight. Freddie is drawn into a murky world of subterfuge, intimidation, political scheming, and a shattering conspiracy. Joining the team of *The Hour*, the two begin work for the show's charismatic front man, and a love triangle emerges that drives their ambition and fuels the aspirations of the broadcast.

Hamish Macbeth

Mondays at 8 p.m. starting May 9 on WETA UK

Loosely based on the beloved mysteries by M.C. Beaton (*Agatha Raisin*), the Scottish mystery-comedy-drama *Hamish Macbeth* stars Robert Carlyle (*Cobra*, *Trainspotting*, *The Full Monty*) in the title role as a singularly unambitious rural police constable. He patrols the lovely fictitious Highland village of Lochdubh with his indispensable canine partner, a West Highland Terrier named Wee Jock. As he interacts with other colorful locals, Macbeth goes his own way, upholding the law with a light touch while trying vigorously not to be promoted out of his ideal job.



Aristocrats

Fridays at 10 p.m. starting May 20 on WETA UK

Based on a true story of high politics and romance, of family solidarity and disaster, the lavish six-part 1999 costume drama *Aristocrats* chronicles the often turbulent lives of the Lennox sisters, daughters of England's Duke of Richmond. Set in the 18th century against a backdrop of royalty and rigid conventions, of political intrigue and scandal, the story follows the sisters as each seeks love and happiness during an age of great change. The sisters ultimately attained notoriety in society. The production stars Serena Gordon, Anne-Marie Duff, Geraldine Somerville, Jodhi May, Alun Armstrong and Siân Phillips.

Also this month: Tune in May 14-15 & 21-22 for a WETA UK TOP-20 COUNTDOWN! WETA presents viewer favorites, counting down to the most popular program on the channel. Also in May, Italian law/crime series *The Hunter* airs Tuesdays at 9 p.m. starting May 17; and culinary series *Mary Berry's Absolute Favorites* joins the program lineup on Sundays, May 8 & 29 at 9 p.m.

For full schedules and program information, visit weta.org. 17

WETA Metro is the streaming and broadcast television channel that features popular PBS programming and engaging content curated for our local audience, including offerings spotlighting the Metro D.C. community. The channel is simulcast with WETA PBS most evenings. Each day on WETA Metro, enjoy local programs, news and public affairs offerings (such as *PBS NewsHour*, weekdays at 6 p.m./11 p.m.), and lifestyle and cultural shows.

VISIT [WETA.ORG/SCHEDULE](https://weta.org/schedule) FOR A COMPLETE PROGRAM LINEUP

Stream at weta.org/livestream or via the PBS Video App



AMERICAN PUBLIC TELEVISION

Pacific Heartbeat, Series 11

Saturdays, May 7, 8 p.m.

& May 21, 9 p.m. on WETA Metro

Anthology series *Pacific Heartbeat*, spotlighting Pacific peoples, cultures and issues, presents programs marking Asian American and Pacific Islander Heritage Month. *High Tide, Don't Hide* (May 7, 8 p.m.): New Zealand teenagers join the global School Strike for Climate and discover that activism, authority and awareness make for a steep learning curve. *James & Isey* (May 7, 9 p.m.): New Zealanders Isey and her son James prepare for Isey's 100th birthday celebration. *Loimata, The Sweetest Tears* (May 7, 10 p.m.): A chronicle of journeys explores the redemptive tale of a family returning to its homeland of Sāmoa. *The Healer Stones of Kapaemahu* (May 21, 9 p.m.): At Honolulu's Waikiki Beach, four large stones represent a Hawaiian tradition of healing and gender diversity.

Independent Lens: Try Harder!

Saturday, May 14 at 9:30 p.m. on WETA Metro

San Francisco's Lowell High School, one of the top public schools in the country, draws high achievers from across the city into a fiercely competitive universe. Nearly 70 percent are Asian Americans. In the documentary *Try Harder!*, follow seniors as the pressure intensifies to impress admissions officers at elite universities with their report cards, test scores and overall merit. The students proudly own their identity as nerds and tell their stories with candor and humor. The film, an official selection at the Sundance Film Festival, asks: how do these kids define their identities outside of acceptance letters? The documentary streams on the PBS App.



COURTESY LOU NAVASANO

Antiques Roadshow Visits Colonial Williamsburg

Mon., May 9, 16 & 23 at 9 p.m. on WETA Metro

Part adventure, part history lesson, part treasure hunt, the popular series — now in its 26th season — this month visits Williamsburg, Virginia, to discover fascinating items and deliver eye-opening appraisals. Hour 1 (May 9) includes a Tiffany & Co. brooch, c. 1905; a 1597 book (left); and a Bahne skateboard; Hour 2 (May 16) spotlights a *Mary Poppins* design sketch and an astronaut-signed Mercury Project book; and Hour 3 (May 23) presents Marvel Silver Age comics, a 1969 Rolex and a Tibetan bronze Buddha. Appraisals extend into six digits in each program. The episodes also air on WETA PBS (at 8 p.m.) and stream on the PBS App.



COURTESY MEREDITH NIEMAN FOR GBH, ©WGBH 2022.

The WETA World channel is a 24/7 news and public affairs service devoted to fact-based nonfiction programming, sharing broad perspectives, stories and ideas. WETA World informs and educates, presenting award-winning documentaries and domestic and international news broadcasts. The channel features a slate of original programs that examine issues with a diversity of voices and illuminate conflicts, movements and cultures around the globe.

VISIT WETA.ORG/SCHEDULE FOR A COMPLETE PROGRAM LINEUP

Real Stories from Around the World



Local, USA: A Tale of Three Chinatowns

Monday, May 23 at 8 p.m.
on WETA World

This month, WETA World presents nearly 60 films marking Asian American and Pacific Islander Heritage Month; visit weta.org/asian-pacific to learn about offerings across WETA channels. *A Tale of Three Chinatowns* explores the survival of urban ethnic neighborhoods in three American cities: Washington, D.C.,

Chicago (above) and Boston. Through the voices of residents, community activists, developers and government officials, the film looks at the forces altering each community and the challenges that go with them, including the issue of urban development and gentrification. Also tune in to *America ReFramed: Chinatown Rising*, airing Thursday, May 26 at 8 p.m. on WETA World. The film offers a portrait of a San Francisco neighborhood in transition. Chinatown activists of the 1960s reflect on their years waging battles for bilingual education, tenants' rights and ethnic studies curricula that would shape their community and nation. Stream these programs on WETA Passport as of their broadcast premieres.

America ReFramed: Geographies of Kinship

Thursday, May 19 at 8 p.m. on WETA World

Geographies of Kinship on documentary series *America ReFramed* weaves together the complex personal histories of four adult adoptees born in South Korea during the rise of the country's global adoption program. Raised in foreign families, the adoptees set out on a journey to reconnect with their roots, mapping the geographies of kinship that bind them to a homeland they never knew. The program streams on WETA Passport as of May 19.



Stories from the Stage

Mondays at 9:30 p.m. on WETA World

The weekly half-hour series *Stories from the Stage* presents ordinary people sharing their extraordinary experiences. Among programs this month are: *Family Ties* (May 2), sharing stories of family connection and the way it shaped lives; *Match Made* (May 9), relating stories of matches that made all the difference; and *Growing Up Asian American* (May 23), with David Hu (left), speaking to the richness and variety of the Asian American experience.



HARSH ATT

Chiarina Chamber Players

Front Row Washington in May

Mondays at 9 p.m. on WETA Classical

By John Banther, on-air host

We start the month's *Front Row Washington* on May 2 with a performance of the local Chiarina Chamber Players from St. Marks Church in Washington. They effortlessly play the *Trio élégiaque No. 1* by Sergei Rachmaninoff; the ethereal *Lonely Angel*, written by Peter Vasko after a vision he experienced; and *Café Music* by Paul Schoenfeld, a composer known for combining classical, folk, and popular forms. Later in May: the Dublin Guitar Quartet plays music by living composers; the 21st Century Consort performs works by Joan Towers and Charles Ives; the National Orchestral Institute Philharmonic presents music by Missy Mazzoli and Robert Schumann; and more. *Front Row Washington* airs each Monday at 9 p.m. on WETA Classical.

NSO Showcase Presents: Beg, Borrow, or Steal?

Wednesday, May 4 at 9 p.m. on WETA Classical

By Nicole Lacroix, on-air host

There are hundreds of modern adaptations of Jane Austen's *Pride and Prejudice*, including one with zombies! Classical composers are also intrigued by the musical possibilities of earlier masterpieces. In this fascinating NSO *Showcase* program, we'll feature several examples of this musical "borrowing," all conducted by National Symphony Orchestra (NSO) Music Director Gianandrea Noseda. Benjamin Britten's *Matinées Musicales* channels Rossini, while Brahms developed his *Haydn Variations* on a theme Haydn didn't actually write. Luciano Berio's take on Bach, Duke Ellington's jazzy *Nutcracker*, and Maurice Ravel's orchestration of Mussorgsky's *Pictures at an Exhibition* complete the program. Tune in May 4 at 9 p.m. on WETA Classical.



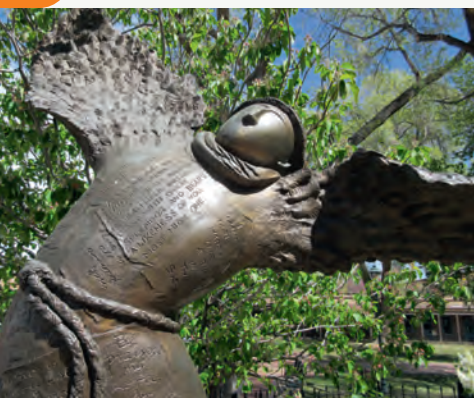
Ellington and Tchaikovsky; *The Nutcracker*

Music for Spring on Choral Showcase

Sundays at 9 p.m. on WETA Classical

By Bill Bukowski, on-air host

May Day, May 1, is a celebration of spring and a harbinger of summer, so we'll offer music "For the Beauty of the Earth" on *Choral Showcase*. One hymn to life comes from St. Francis of Assisi. His "Canticle of Brother Sun, Sister Moon", the *Canticum creatorium*, will be performed by Altramar. We'll hear songs for the water by Giselle Wyers and Gustav Holst; *Music at the Heart of Creation* by Christopher J. Hoh of Arlington; and *Songs of Springtime* by E. J. Moeran. We'll conclude with the *Missa Gaia: Mass for the Earth*, by Libby Larsen. Join me for *Choral Showcase* each Sunday night at 9 p.m. on WETA Classical.



BILL BUKOWSKI

St. Francis of Assisi

Classical for Washington

Go Behind the Music with the Classical Breakdown Podcast

Stream at classicalbreakdown.org

Classical Breakdown is a bi-weekly podcast from WETA Classical that illuminates the art and artistry of classical music. It's hosted by John Banther, whom WETA Classical listeners can hear each Monday evening on the program Front Row Washington. A musician himself, Banther is eager to help listeners appreciate beloved works, improve their listening skills, learn about composers and the creative process, hear from musical artists, and pursue musical discoveries. Below, Banther suggests a selection of Classical Breakdown episodes that listeners shouldn't miss.



WETA Classical's John Banther



The Four Seasons: How Vivaldi Depicts the World in Sound (Episode 3)

This was one of the very first episodes and continues to be our most downloaded episode. In this episode we feature a recording that brings this piece to life, and we get into all the accompanying poetry and musical context lost on most audiences. No matter how many times you've heard something, there is always something new to learn.

George Walker: He Wants You to Play His Music (Episode 58)

We have created many episodes on individual composers, but in this installment, I actually spoke to someone who was a friend and colleague of the composer for 25 years — Dr. Mickey Terry from Howard University. Terry's familiarity with George Walker gave us and the listeners a level of insight otherwise not possible. This first-hand perspective is a wonderful introduction to one of our country's great composers.

What Does a Conductor Do? (Episode 10)

I love breaking down barriers and showing audiences the real-life details of what life is like in music. In this engaging episode, I spoke to conductor Michelle Merrill, who tells us what it's *actually like* to be a conductor — go behind the scenes with me to learn how they prepare concerts, rehearse, and more.

National Symphony Orchestra musician insights (Episodes 62, 49, 45, 40, 21)

It's one thing to hear about the different instruments and what they do. It's entirely another to hear all about them from the musicians themselves. They've spent an extraordinary amount of time to achieve their level of expertise and virtuosity, and the insights they share reveal a lot about not just them but the music and the musical process as well. We cover an intriguing array of subjects, from the recent April podcast episode *All about that bass! With NSO Principal Bass Robert Oppelt*, to discussions of the clarinet, viola, bassoon and flute.

To listen to these *Classical Breakdown* episodes, visit classicalbreakdown.org, or search for *Classical Breakdown* wherever you get your podcasts.



MARTY SOHL/METROPOLITAN OPERA

Turandot

Opera Matinee in May

Saturday afternoons on WETA Classical

By Linda Carducci, on-air host

A live performance of Giacomo Puccini's thrilling *Turandot* opens this month's Metropolitan Opera Saturday matinee broadcasts on May 7 (1 p.m.). The story of a cold-hearted princess who subjects her suitors to a deadly contest of riddles is an audience favorite that includes the stirring tenor aria, "Nessun Dorma." Then, Wagner's *Die Meistersinger von Nürnberg*, set amid a guild of Renaissance Master Singers, airs May 14 (noon), led by renowned conductor Sir Antonio Pappano. Feuding families and madness fill Donizetti's dramatic

Lucia di Lammermoor, featured May 21 (1 p.m.). And in honor of Philip Glass' 85th birthday, the Met presents *Akhmaten*, his 1983 opera about the life of the Egyptian pharaoh, on May 28 (1 p.m.).

WETA Passport

Stream *Masterpiece* dramas and much more with WETA Passport, our popular member benefit that provides you with access to an extensive library of the best public television programs! You're ready to activate now at pbs.org/passport if you see a four-word activation code above your name and address at left; or go to weta.org/passport to make your qualifying donation of \$60 (or \$5 monthly) to start enjoying WETA Passport today.

ADVERTISEMENT



Washington National Opera The Kennedy Center

Timothy O'Leary
General Director

Francesca Zambello
Artistic Director



Gabriella Reyes, Denyce Graves, Raehann Bryce-Davis,
Christine Goerke, Latonia Moore

Photo by Matt Karas



National Symphony Orchestra The Kennedy Center

Gianandrea Noseda
Music Director



Gianandrea Noseda

Photo by Scott Suchman

Subscribe now to the 2022-2023 seasons!

Washington National Opera

NEW PRODUCTION

Il trovatore | Giuseppe Verdi

NEW PRODUCTION

Elektra | Richard Strauss

NEW PRODUCTION

Blue | Jeanine Tesori and Tazewell Thompson

WNO PRODUCTION

La bohème | Giacomo Puccini

NEW PRODUCTION | SUBSCRIBER OPTION

The Passion of Mary Cardwell Dawson |
Carlos Simon and Sandra Seaton

American Opera Initiative and more!

National Symphony Orchestra

World Premieres & Commissions

from Jessie Montgomery, Steven Mackey, Michael Daugherty, Carlos Simon, and Philip Glass

Mini-Residency with Daniil Trifonov

playing works by pioneering composers Prokofiev, Rachmaninoff, and Scriabin

Star soloists

including Lang Lang, Stephen Hough, Anne Akiko Meyers, Leila Josefowicz, Leonidas Kavakos, Midori, and J'Nai Bridges

Exciting guest conductors

including John Storgårds, Sir Mark Elder, James Gaffigan, Krzysztof Urbanski, and Christoph Eschenbach

Beethoven & American Masters and more!

Subscribe online at Kennedy-Center.org/Subscriptions
or call the Subscriptions Office at (202) 416-8500, weekdays 10 a.m.-5 p.m.

Information for all other ticket-related
customer service inquiries available at
Advance Sales Box Office at (202) 416-8540

THANKS TO OUR SPONSORS

WNO Presenting Sponsor
GENERAL DYNAMICS

Jacqueline
Badger Mars

Mrs. Eugene
B. Casey

The NSO Music Director
Chair is generously endowed
by the Sant Family

NSO Pops
Presenting Sponsor
AARP

Blue Series Sponsor
Raytheon
Technologies

Noseda Era Fund
Supporters